



**India Meteorological Department  
(Ministry of Earth Sciences)**

**BULLETIN NO. 5 (BOB/05/2022)**

**TIME OF ISSUE:0800 HOURS IST**

**DATED: 10.08.2022**

**FROM: INDIA METEOROLOGICAL DEPARTMENT (FAX NO. 24643965/24699216/24623220)**

**TO: CONTROL ROOM, NDM, MINISTRY OF HOME AFFAIRS (FAX.NO. 23093750)**

**CONTROL ROOM NDMA (FAX.NO. 26701729)**

**CABINET SECRETARIAT (FAX.NO.23012284, 23018638)**

**PS TO HON'BLE MINISTER FOR S & T AND EARTH SCIENCES (FAX NO.23316745)**

**SECRETARY, MOES (FAX NO. 24629777)**

**H.Q. (INTEGRATED DEFENCE STAFF AND CDS) (FAX NO. 23005137/23005147)**

**DIRECTOR GENERAL, DOORDARSHAN (23385843)**

**DIRECTOR GENERAL, AIR (23421105, 23421219)**

**PIB MOES (FAX NO. 23389042)**

**UNI (FAX NO. 23355841)**

**D.G. NATIONAL DISASTER RESPONSE FORCE (NDRF) (FAX NO. 26105912, 2436 3260)**

**DIRECTOR, PUNCTUALITY, INDIAN RAILWAYS (FAX NO. 23388503)**

**CHIEF SECRETARY, ANDAMAN & NICOBAR ISLANDS (FAX NO. 03192- 232656)**

**CHIEF SECRETARY, GOVT. WEST BENGAL (FAX NO. 033-22144328)**

**CHIEF SECRETARY, GOVT. OF ODISHA (FAX NO. 0674 -2536660)**

**CHIEF SECRETARY, GOVT. OF ANDHRA PRADESH (FAX NO. 0863-2441029, 08645-246600)**

**CHIEF SECRETARY, GOVT. OF TAMIL NADU (FAX NO. 044-25672304)**

**CHIEF SECRETARY, GOVT. OF PUDUCHERRY (FAX NO. 0413-2337575, 2334145)**

**CHIEF SECRETARY, GOVT. OF GUJARAT (FAX NO. 079-23250305)**

**CHIEF SECRETARY, GOVT. OF MAHARASHTRA (FAX NO. 022- 22028594)**

**CHIEF SECRETARY, GOVT. OF CHHATTISGARH (FAX NO. 771-2221206 )**

**CHIEF SECRETARY, GOVT. OF JHARKHAND (FAX NO. 651-2400255)**

**CHIEF SECRETARY, GOVT. OF TELANGANA (FAX NO.040-23453700)**

**CHIEF SECRETARY, GOVT. OF MADHYA PRADESH (FAX NO. 755-2441076)**

**Sub: Depression over interior Odisha and adjoining Chhattisgarh weakened into a well marked low pressure area over Chhattisgarh and adjoining east Madhya Pradesh**

The depression over interior Odisha and adjoining Chhattisgarh moved west-northwestwards during last 06 hours, and weakened into a Well Marked Low Pressure Area at 0530 hours IST of today, the 10<sup>th</sup> August, 2022, over Chhattisgarh and adjoining east Madhya Pradesh. It is likely to move west-northwestwards and gradually weaken into a low pressure area during next 24 hours.

**Warnings:**

**(i) Rainfall (warning graphics enclosed)**

**10<sup>th</sup> August:** Heavy to very heavy rainfall at isolated places is likely over Madhya Pradesh, Madhya Maharashtra, Vidarbha, Chhattisgarh, Odisha and Gujarat region and heavy rainfall at isolated places is likely over Jharkhand, Gangetic West Bengal and East Rajasthan.

**11<sup>th</sup> August:** Heavy to very heavy rainfall at isolated places is likely over Madhya Pradesh and Gujarat State; and heavy rainfall at isolated places is likely over East Rajasthan, Madhya Maharashtra, Vidarbha, Chhattisgarh, Jharkhand, Odisha and Gangetic West Bengal.

**12<sup>th</sup> August: Heavy to very heavy rainfall at isolated places** is likely over west Madhya Pradesh and **heavy Rainfall at isolated places** is likely over Gujarat state, Rajasthan, Chhattisgarh and Odisha.

**13<sup>th</sup> August: Heavy to very heavy rainfall at isolated places** is likely over Odisha and **heavy rainfall at isolated places** is likely over Rajasthan, Madhya Pradesh, Chhattisgarh, Jharkhand, Coastal Andhra Pradesh and Gangetic West Bengal.

**(ii) Wind warning:**

**10<sup>th</sup> August:** Squally wind speed reaching 45-55 kmph gusting to 65 kmph is very likely over northwest Bay of Bengal along & off Odisha & West Bengal coasts, central & adjoining south Bay of Bengal and along & off North Andhra Pradesh, Tamil Nadu, and Comorin area & east Sri Lanka coasts. Squally weather with wind speed reaching 40-50 kmph gusting to 60 kmph is very likely over northeast Bay of Bengal and Andaman Sea.

**11<sup>th</sup> August:** Squally wind speed reaching 40-50 kmph gusting to 60 kmph is very likely over north Bay of Bengal along & off Odisha & West Bengal coasts, central & adjoining south Bay of Bengal and along & off south Tamil Nadu coast, Comorin area & southeast Sri Lanka coasts.

**12<sup>th</sup> August:** Squally wind speed reaching 40-50 kmph gusting to 60 kmph over central Bay of Bengal and adjoining north Bay of Bengal & parts of south Bay of Bengal.

**(iii) Sea condition**

Sea condition is likely to be rough to very rough over north Bay of Bengal along & off Odisha & West Bengal coasts, central & adjoining south Bay of Bengal and along & off Andhra Pradesh, Tamil Nadu, and Comorin area & east Sri Lanka coasts and Andaman Sea during 10<sup>th</sup> to 11<sup>th</sup> August and **over** central Bay of Bengal & adjoining north Bay of Bengal & parts of south Bay of Bengal on 12<sup>th</sup> August.

**(iv) Fishermen Warning**

Fishermen are advised not to venture into north Bay of Bengal along & off Odisha & West Bengal coasts, central & adjoining south Bay of Bengal and along & off Andhra Pradesh, Tamil Nadu, and Comorin area & east Sri Lanka coasts and Andaman Sea during 10<sup>th</sup> to 11<sup>th</sup> August and into central & adjoining North Bay of Bengal & parts of south Bay of Bengal and Andaman Sea on 12<sup>th</sup> August.

This is the last bulletin in association with the system. However regular weather bulletins shall continue from the respective Meteorological Centres and National Weather Forecasting Centre (NWFC), New Delhi, India Meteorological Department in association with its remnant low pressure system.

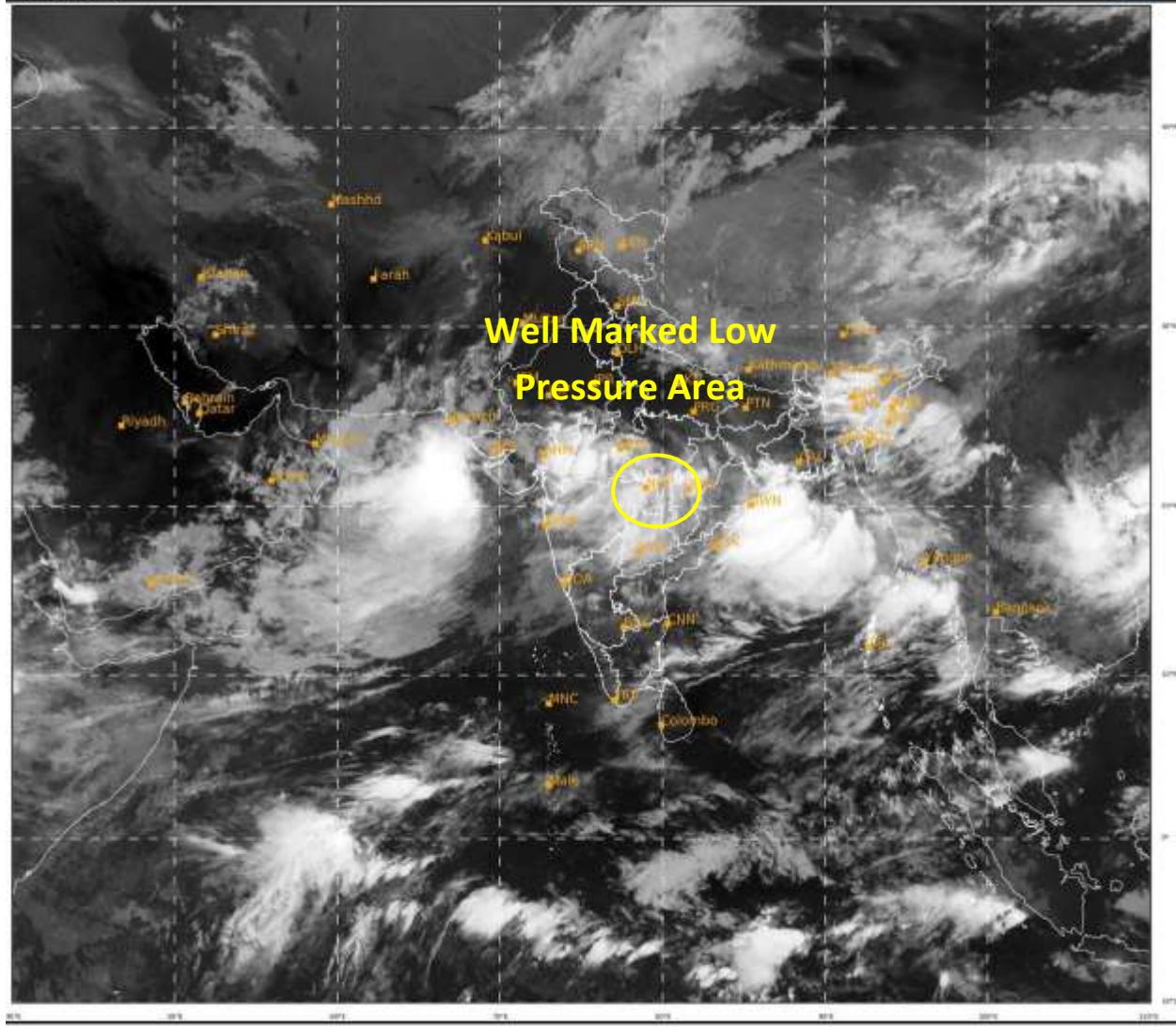
**(Dr. RK JENAMANI)**  
**Scientist F, Cyclone Warning, New Delhi**

*Copy to: ACWC Kolkata/ ACWC Chennai/ CWC Bhubaneswar/CWCVisakhapatnam/CWC Ahmedabad/ MO Port Blair/MC Raipur/MC Bhopal/MC Hyderabad/RMC Nagpur*

**LEGEND: Heavy Rainfall:** 64.5 to 115.5mm, **Very Heavy Rainfall:** 115.6 to 204.4mm **Most Places:** more than 76% of total stations, **Isolated Places:** Less than 25% of total

SAT : INSAT-3D IMG  
IMC\_TIR1 10.8 um  
LIC Mercator

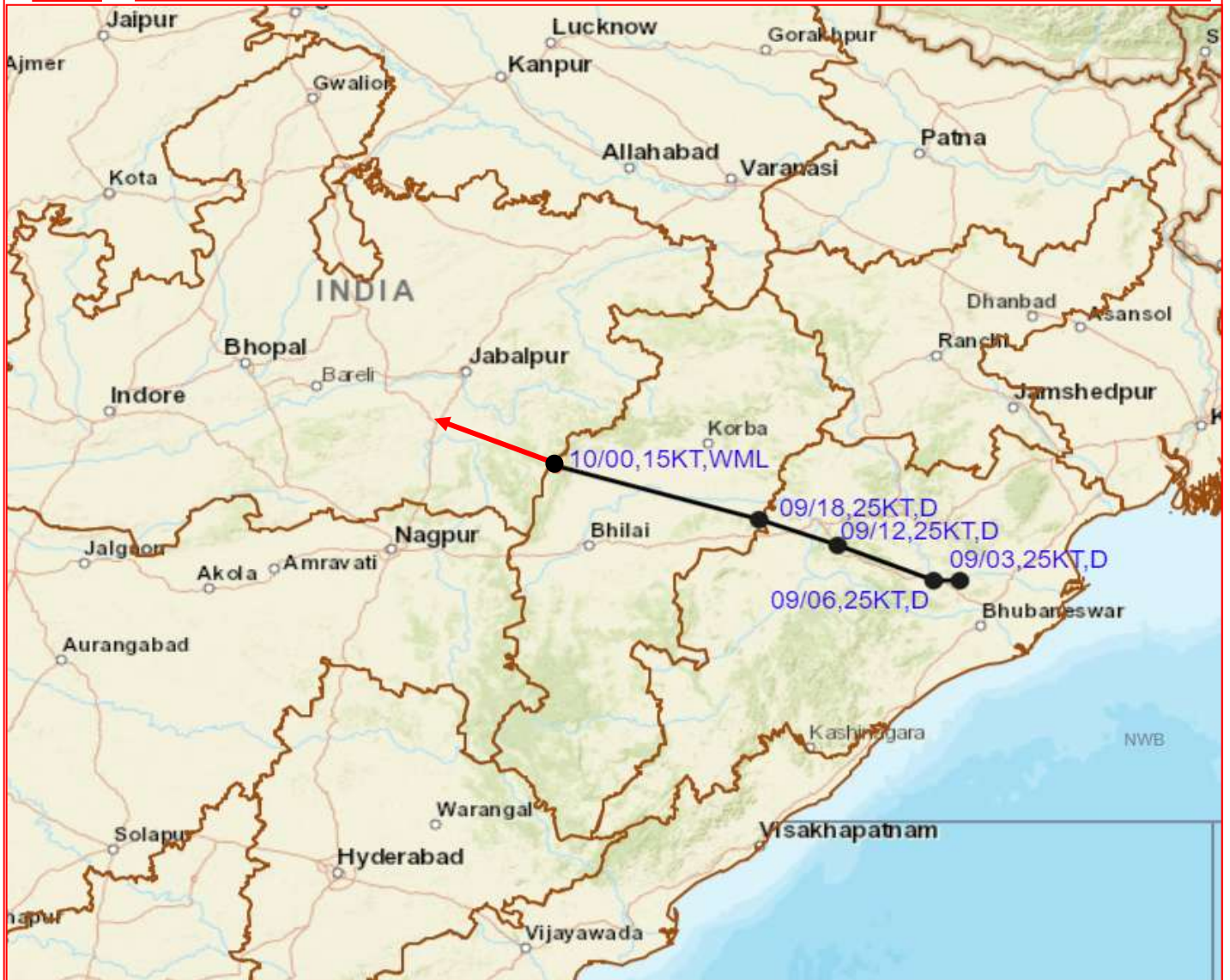
10-08-2022/(0000 to 0026) GMT  
10-08-2022/(0530 to 0536) IST



IMD, DELHI



## OBSERVED TRACK OF DEPRESSION OVER ODISHA AT 09<sup>TH</sup> - 10<sup>TH</sup> AUGUST, 2022



DATE/TIME IN UTC

IST=UTC + 0530

L: LOW PRESSURE AREA

WML: WELL MARKED LOW PRESSURE AREA

D: DEPRESSION (17-27 KT)

DD: DEEP DEPRESSION (28-33 KT)

CS: CYCLONIC STORM (34-47 KT)

SCS: SEVERE CYCLONIC STORM (48-63KT)

VSCS: VERY SEVERE CYCLONIC STORM (64-89 KT)

ESCS: EXTREMELY SEVERE CYCLONIC STORM (90-119 KT)

SuCS: SUPER CYCLONIC STORM ( $\geq$  120 KT)

● LESS THAN 34 KT

○ 34-47 KT

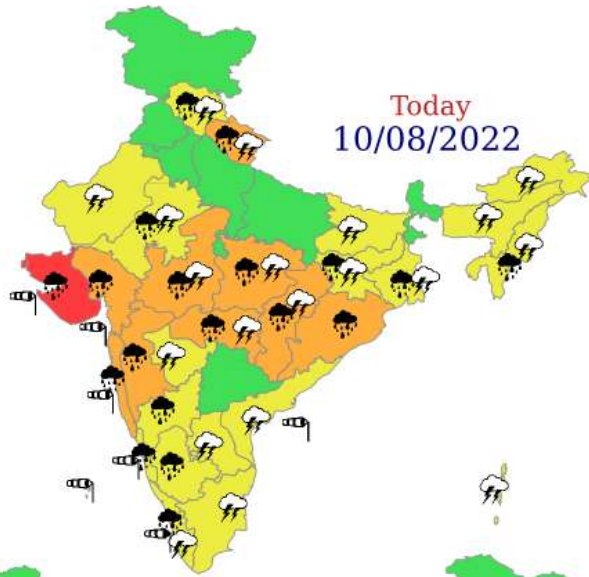
○  $\geq$  48 KT

— OBSERVED TRACK

— FORECAST TRACK

▲ CONE OF UNCERTAINTY

Today  
10/08/2022



**WARNING**



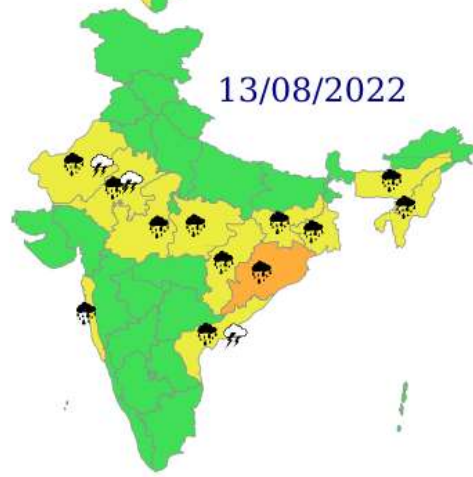
Tomorrow  
11/08/2022



12/08/2022



13/08/2022

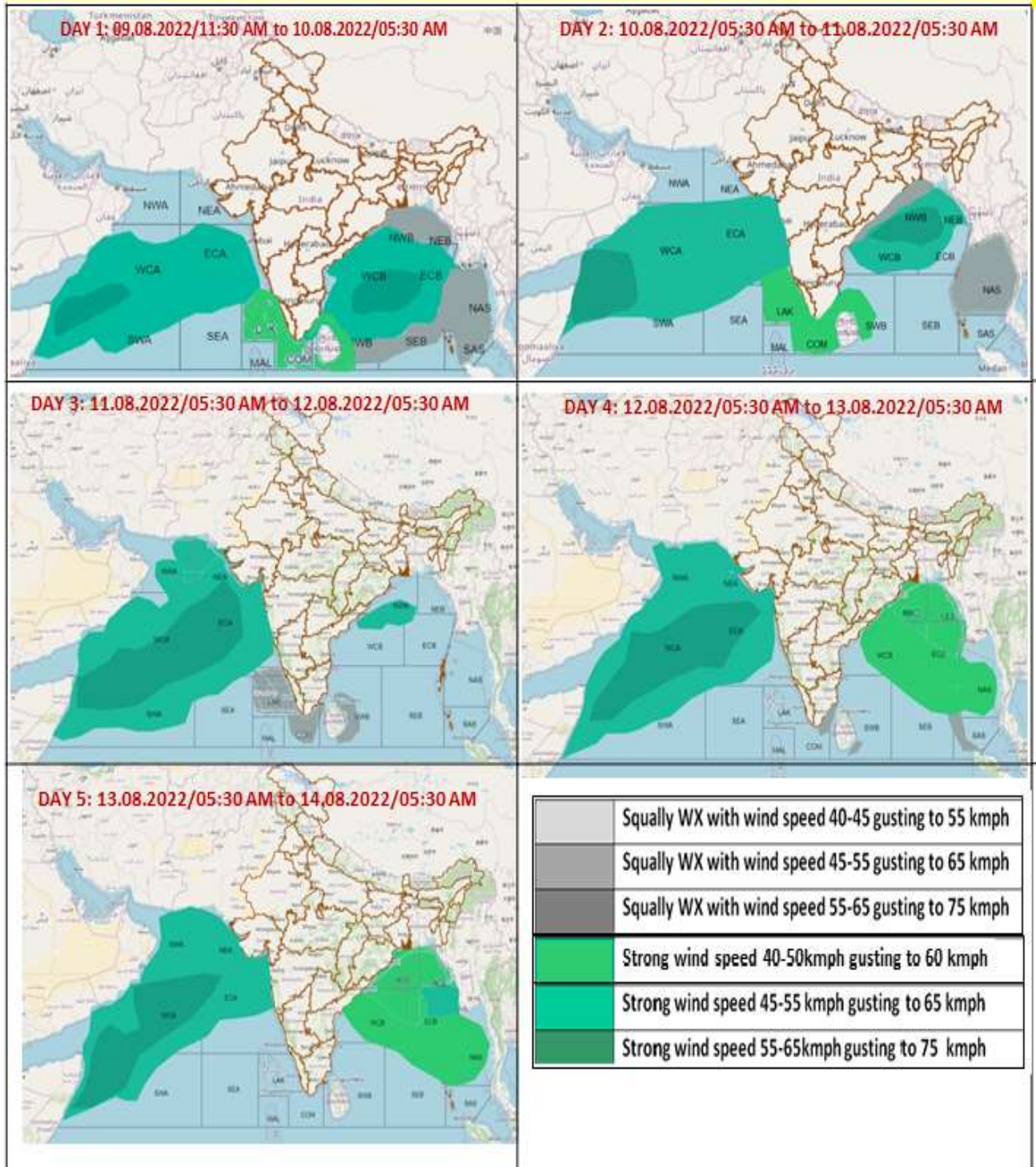


14/08/2022



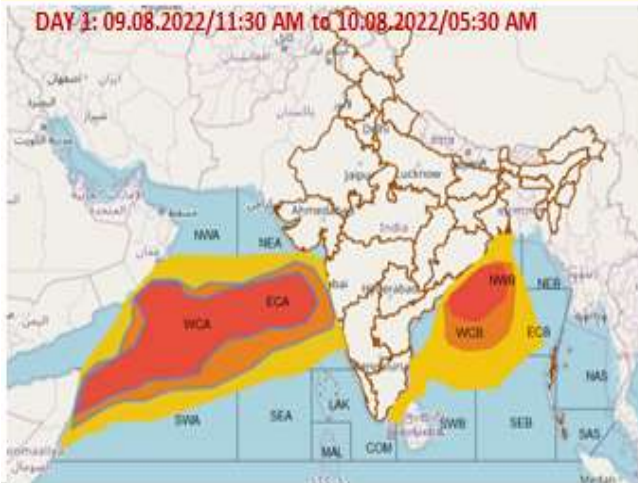
- |  |  |  |  |
|--|--|--|--|
|  Heavy Rain   |  Heavy Snow |  Thunderstorm |  Dust Storm   |
|  Strong Winds |  Visibility |  Cyclone      |  Squall/ Hail |
|  Frost        |  Cold Wave  |  Heat Wave    |  Sea State    |

## Fishermen Warning Graphics

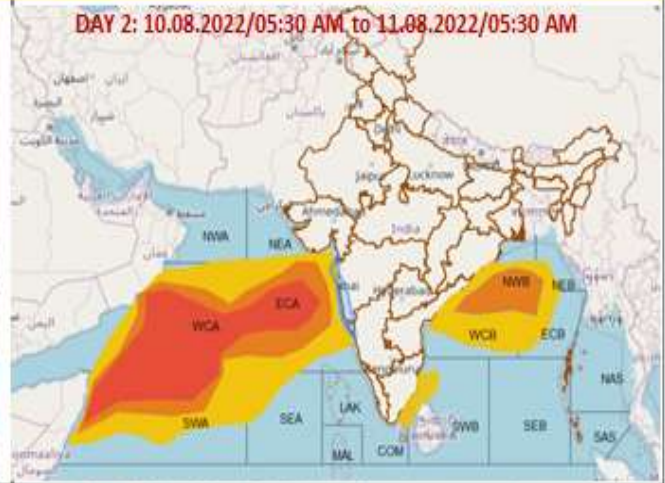


## Probability of exceedance of maximum sustained winds $\geq 45$ kmph

**DAY 1: 09.08.2022/11:30 AM to 10.08.2022/05:30 AM**



**DAY 2: 10.08.2022/05:30 AM to 11.08.2022/05:30 AM**



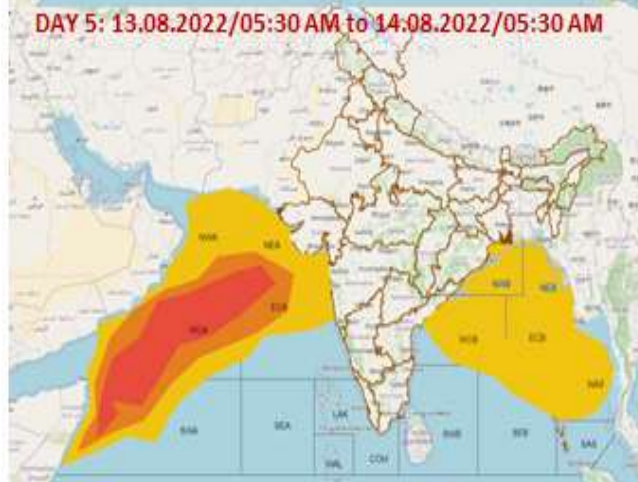
**DAY 3: 11.08.2022/05:30 AM to 12.08.2022/05:30 AM**



**DAY 4: 12.08.2022/05:30 AM to 13.08.2022/05:30 AM**



**DAY 5: 13.08.2022/05:30 AM to 14.08.2022/05:30 AM**



	Probability of exceedance
	Low (1-33%)
	Moderate (34-67%)
	High (68-100%)