



India Meteorological Department
(Ministry of Earth Sciences)

BULLETIN NO. : 17 (BOB/07/2022)

TIME OF ISSUE: 0800HOURS IST

DATED: 22.08.2022

FROM: INDIA METEOROLOGICAL DEPARTMENT (FAX NO. 24643965/24699216/24623220)

TO: CONTROL ROOM, NDM, MINISTRY OF HOME AFFAIRS (FAX.NO. 23093750)

CONTROL ROOM NDMA (FAX.NO. 26701729)

CABINET SECRETARIAT (FAX.NO.23012284, 23018638)

PS TO HON'BLE MINISTER FOR S & T AND EARTH SCIENCES (FAX NO.23316745)

SECRETARY, MOES (FAX NO. 24629777)

H.Q. (INTEGRATED DEFENCE STAFF AND CDS) (FAX NO. 23005137/23005147)

DIRECTOR GENERAL, DOORDARSHAN (23385843)

DIRECTOR GENERAL, AIR (23421105, 23421219)

PIB MOES (FAX NO. 23389042)

UNI (FAX NO. 23355841)

D.G. NATIONAL DISASTER RESPONSE FORCE (NDRF) (FAX NO. 26105912, 2436 3260)

DIRECTOR, PUNCTUALITY, INDIAN RAILWAYS (FAX NO. 23388503)

CHIEF SECRETARY, CHATTISGARH (FAX NO. 771-2221206)

CHIEF SECRETARY, GOVT. OF MADHYA PRADESH (FAX NO. 755-2441076)

CHIEF SECRETARY, GOVT. OF MAHARASHTRA (FAX NO. 022- 22028594)

CHIEF SECRETARY, GOVT. OF UTTAR PRADESH (FAX NO. 522- 2239283)

CHIEF SECRETARY, GOVT. OF RAJASTHAN (FAX NO. 0141-2227114)

CHIEF SECRETARY, GOVT. OF GUJARAT (FAX NO. 079-23250305)

Sub: Depression over Central parts Madhya Pradesh and adjoining south Uttar Pradesh

The depression over Northeast Madhya Pradesh moved westwards during past 06 hours with a speed of 15 kmph and lay centered at 0530 hrs IST of 22nd August, 2022 over Central parts Madhya Pradesh and adjoining south Uttar Pradesh near latitude 24.4°N and longitude 78.8°E, about 60 km north of Sagar (Madhya Pradesh), 70 km west-northwest of Damoh (Madhya Pradesh) and 115 km south-southeast of Jhansi (Uttar Pradesh).

It would continue to move west-northwestwards across northwest Madhya Pradesh and weaken into a Well Marked Low Pressure Area during next 12 hours.

Forecast track and intensity are given in the following table:

Date/Time(IST)	Position (Lat. °N/ long. °E)	Maximum sustained surface wind speed (Kmph)	Category of cyclonic disturbance
22.08.22/0530	24.4/78.8	30-40 gusting to 50	Depression
22.08.22/1130	24.6/78.0	30-40 gusting to 50	Depression
22.08.22/1730	24.8/77.0	25-35 gusting to 45	Well Marked Low

Warnings:

Rainfall:

22nd August: Rainfall at most places with **heavy to extremely heavy rainfall** at isolated places is very likely over west Madhya Pradesh and East Rajasthan; and **heavy rainfall** at isolated places is very likely over East Madhya Pradesh, Southwest Uttar Pradesh, West Rajasthan and North Gujarat region and north Madhya Maharashtra.

23rd August: Rainfall at most places with heavy to very heavy rainfall at isolated places is likely over south Rajasthan & adjoining North Gujarat and heavy rainfall at isolated places is likely over north Madhya Maharashtra.

24th August: Rainfall at most places with heavy to very heavy rainfall at isolated places is likely over Southwest Rajasthan and adjoining Kutch area.

Wind:

- **Squally wind speed reaching 30-40 gusting to 50 kmph** is likely over central parts of Madhya Pradesh around the system center during next 12 hours and **strong winds speed reaching 25-35 kmph gusting to 45 kmph** is likely to prevail over remaining parts of west Madhya Pradesh and adjoining southwest Uttar Pradesh during next 24 hours.

Damage expected over Central parts of Madhya Pradesh and adjoining Southwest Uttar Pradesh:

- Damage to loose/unsecured structures. Some breaches in Kutcha road & embankments due to flooding.
- Damage to small trees like Banana, Papaya etc. Damage to standing crops and horticulture.
- Localized Flooding of roads, water logging in low lying areas and closure of underpasses.
- Reduction in visibility due to heavy rainfall.
- Disruption of traffic in major cities due to water logging in roads.
- Localized Landslide/Mudslides.
- It may lead to riverine flooding in some river catchments (for riverine flooding please visit Web page of CWC)

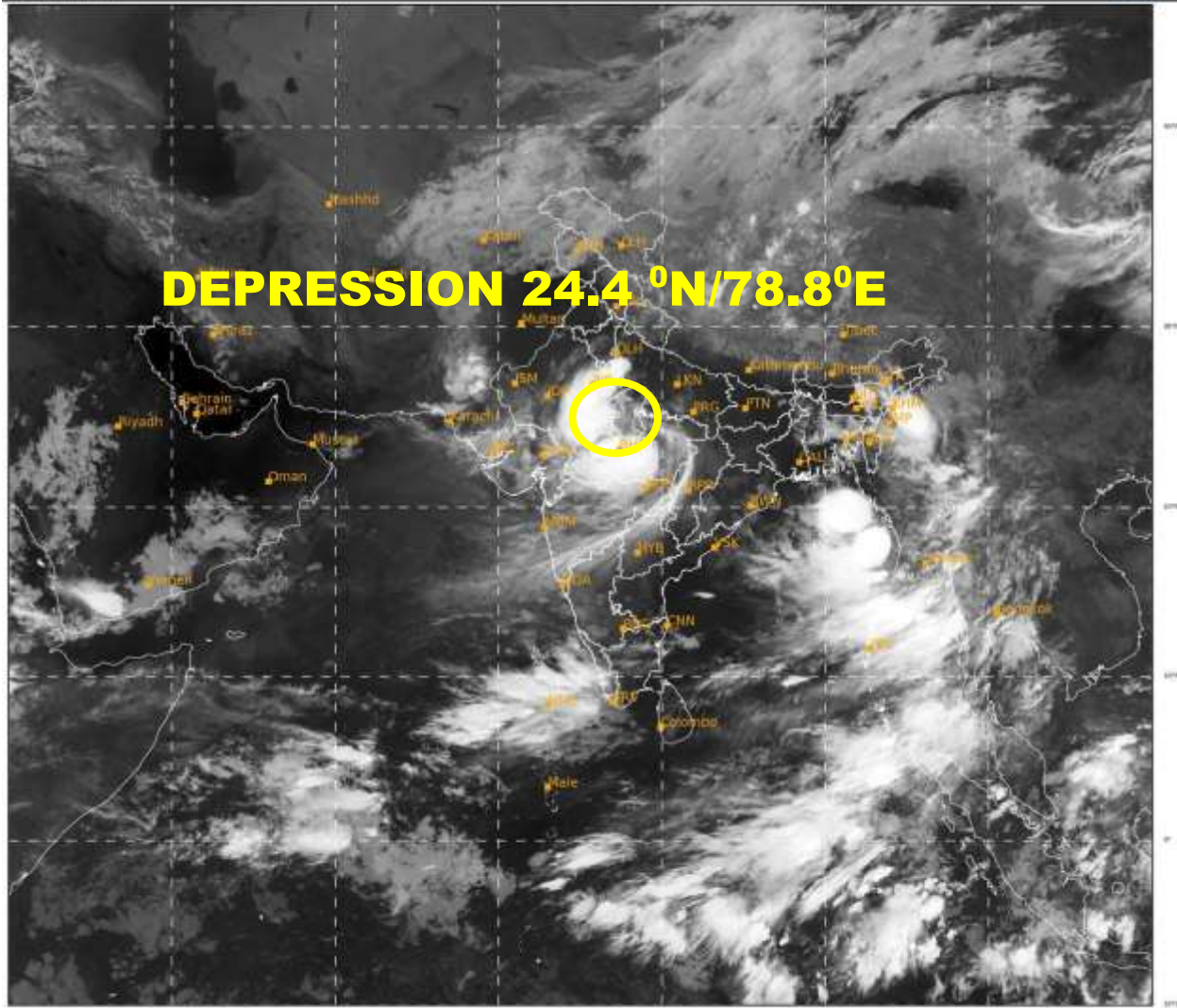
Next Bulletin will be issued at 1130 hours IST of today, the 22nd August, 2022.

(DR RK JENAMANI)

Scientist C, Cyclone Warning Division, New Delhi

Copy to: ACWC Mumbai/ ACWC Kolkata/ ACWC Chennai/ CWC Bhubaneswar/CWCVisakhapatnam/ / MO Port Blair/MC Raipur/MC Bhopal/MC Hyderabad/RMC Nagpur/

LEGEND: Heavy Rainfall: 64.5 to 115.5mm, **Very Heavy Rainfall:** 115.6 to 204.4mm **Extremely Heavy Rainfall:** more than 204.5 mm, **Most Places:** more than 76% of total stations, **Many Places:** 50% to 75% of total stations, **Isolated Places:** Less than 25% of total stations



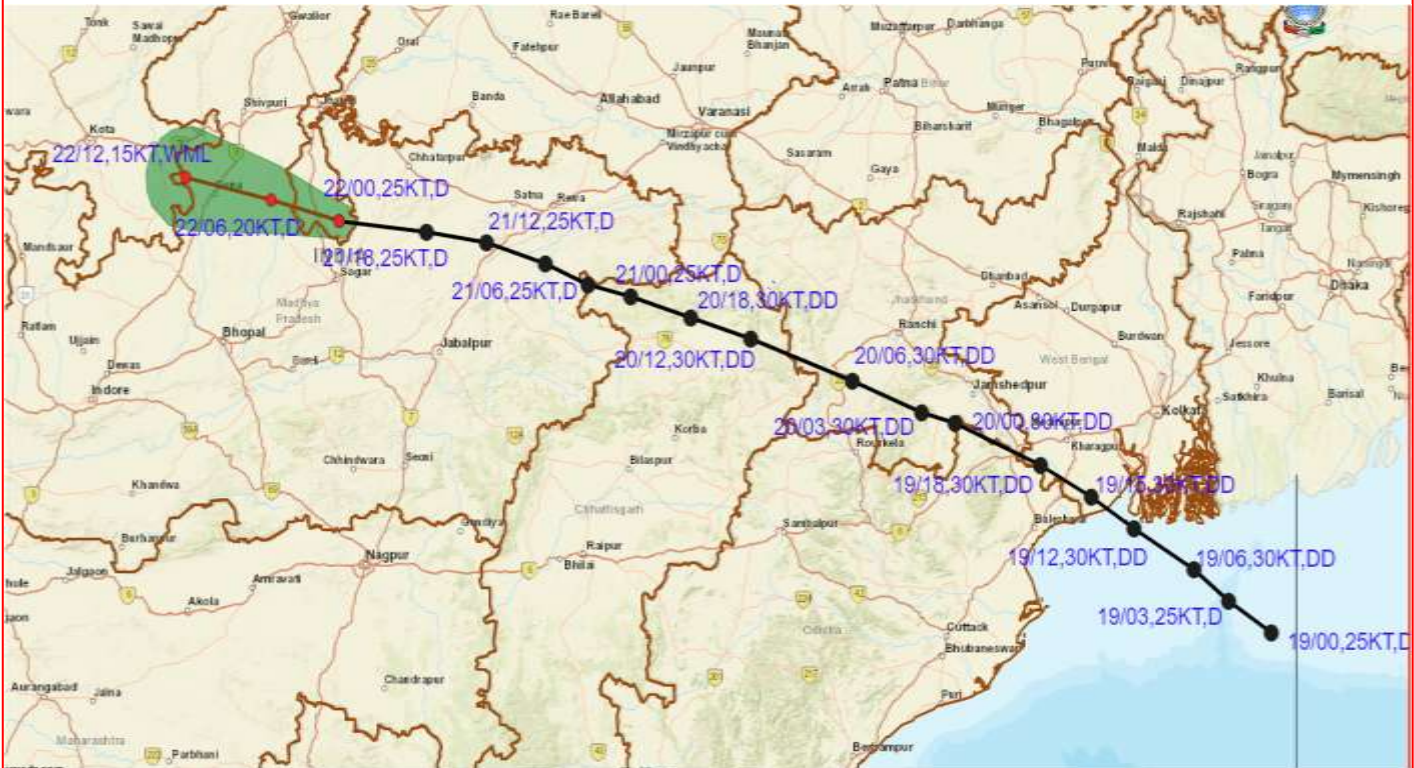
401

940







IMD, DELHI

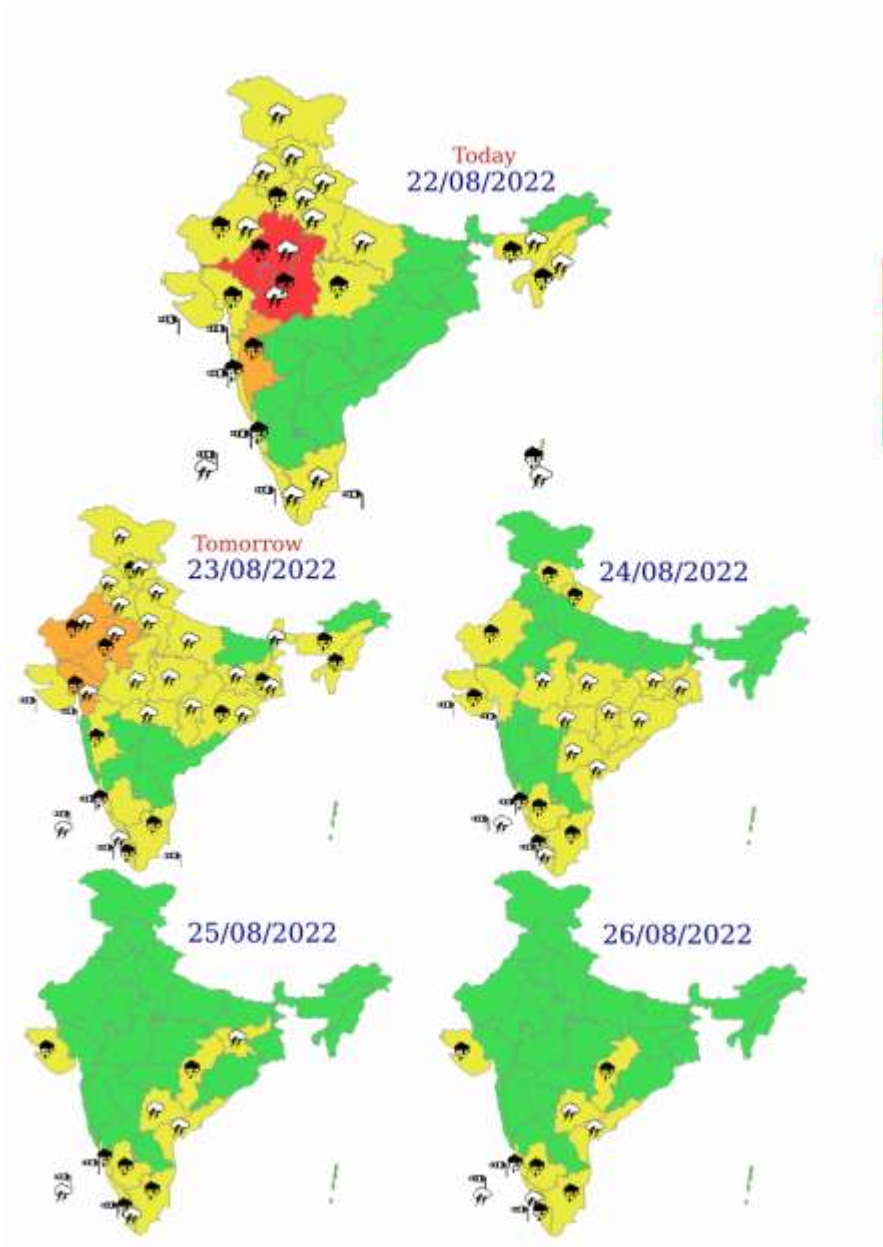


**OBSERVED AND FORECAST TRACK ALONGWITH CONE OF UNCERTAINTY OF DEPRESSION
OVER CENTRAL PARTS MADHYA PRADESH AND ADJOINING SOUTH UTTAR PRADESH
BASED ON 0000 UTC OF 22nd AUGUST, 2022**



DATE/TIME IN UTC
 IST=UTC + 0530
 L: LOW PRESSURE AREA
 WML: WELL MARKED LOW PRESSURE AREA
 D: DEPRESSION (17-27 KT)
 DD: DEEP DEPRESSION (28-33 KT)
 CS: CYCLONIC STORM (34-47 KT)
 SCS: SEVERE CYCLONIC STORM (48-63KT)
 VSCS: VERY SEVERE CYCLONIC STORM (64-89 KT)
 ESCS: EXTREMELY SEVERE CYCLONIC STORM (90-119 KT)
 SuCS: SUPER CYCLONIC STORM (≥ 120 KT)

-  LESS THAN 34 KT
-  34-47 KT
-  ≥ 48 KT
-  OBSERVED TRACK
-  FORECAST TRACK
-  CONE OF UNCERTAINTY



Most Vigil (Take Action)
Be prepared updated (Keep Vigil)
Be aware (Be updated)
No Warning

- | | | | |
|--|--|--|--|
|  Heavy Rain |  Heavy Snow |  Thunderstorm |  Dust Storm |
|  Strong Winds |  Visibility |  Cyclone |  Squall/ Hail |
|  Frost |  Cold Wave |  Heat Wave |  Sea State |