



**India Meteorological Department  
(Ministry of Earth Sciences)  
National Bulletin No. 53 (BOB/08/2025)**

**TIME OF ISSUE: 0930 HOURS IST**

**DATED: 03.12.2025**

**FROM: INDIA METEOROLOGICAL DEPARTMENT (FAX NO. 24643965/24699216/24623220)**

**TO: CONTROL ROOM, NDM, MINISTRY OF HOME AFFAIRS (FAX.NO. 23093750)**

**CONTROL ROOM NDMA (FAX.NO. 26701729)**

**CABINET SECRETARIAT (FAX.NO.23012284, 23018638)**

**PS TO HON'BLE MINISTER FOR S & T AND EARTH SCIENCES (FAX NO.23316745)**

**SECRETARY, MOES (FAX NO. 24629777)**

**H.Q. (INTEGRATED DEFENCE STAFF AND CDS) (FAX NO. 23005137/23005147)**

**DIRECTOR GENERAL, DOORDARSHAN (23385843)**

**DIRECTOR GENERAL, AIR (23421105, 23421219)**

**PIB MOES (FAX NO. 23389042)**

**UNI (FAX NO. 23355841)**

**D.G. NATIONAL DISASTER RESPONSE FORCE (NDRF) (FAX NO. 26105912, 2436 3260)**

**DIRECTOR, PUNCTUALITY, INDIAN RAILWAYS (FAX NO. 23388503)**

**CHIEF SECRETARY, ODISHA (FAX NO. 0674-2536660)**

**CHIEF SECRETARY, WEST BENGAL (FAX NO. 033-22144328)**

**CHIEF SECRETARY, ANDAMAN & NICOBAR ISLANDS (FAX NO. 03192-232656)**

**CHIEF SECRETARY, TAMIL NADU (FAX NO. 044-25672304)**

**CHIEF SECRETARY, ANDHRA PRADESH (FAX NO. 0863-2441029)**

**CHIEF SECRETARY, PUDUCHERRY (FAX NO. 0413-2334145)**

**CHIEF SECRETARY, KERALA (FAX NO. 0471-2327176)**

**CHIEF SECRETARY, LAKSHADWEEP (FAX NO. 048-96268124)**

**Subject: Depression (Remnant of Cyclonic Storm Ditwah) weakened into a well-marked low pressure area over North Tamil Nadu-Puducherry coasts and neighbourhood**

The Depression (Remnant of Cyclonic Storm Ditwah) over southwest Bay of Bengal and adjoining North Tamil Nadu- Puducherry coasts moved slowly southwestwards and weakened into a Well Marked Low Pressure area over North Tamil Nadu-Puducherry coasts and neighbourhood at 0530 hrs IST of today, the 03<sup>rd</sup> December 2025.

It is very likely to continue to move southwestwards slowly across north coastal Tamil Nadu and Puducherry and weaken further into a low-pressure area during next 24 hours.

**Warnings:**

**(i) Rainfall Warning:**

- ❖ Light to moderate rainfall at most places with **heavy to very rainfall at isolated places** is very likely over **North Tamil Nadu, Puducherry, South Coastal Andhra Pradesh & Rayalaseema** on 03<sup>rd</sup> December, 2025.
- ❖ **Kerala:** Light to moderate rainfall at most places with **heavy rainfall** at isolated places is very likely on 3<sup>rd</sup> December, 2025.

**(ii) Wind Warning:**

**(a) Southwest and adjoining westcentral Bay of Bengal and along & off north Tamil Nadu, Puducherry and South Andhra Pradesh Coasts**

Squally weather with wind speed reaching 30-40 gusting to 50 kmph is very likely to prevail till evening of 3<sup>rd</sup> December.

**(b) Along & off south Tamil Nadu coast**

Strong surface winds speed reaching 25-35 gusting to 45 kmph is very likely to prevail till evening of 3<sup>rd</sup> December.

**(c) Interior areas of North Tamil Nadu and adjoining South Andhra Pradesh:**

Strong surface winds speed reaching 20-30 gusting to 40 kmph is very likely to prevail till evening of 3<sup>rd</sup> December.

**(iii) Sea Condition:**

**(a) Southwest and adjoining westcentral Bay of Bengal and along & off north Tamil Nadu, Puducherry and South Andhra Pradesh Coasts:**

Rough to moderate sea conditions are very likely to prevail till evening of 3<sup>rd</sup> December.

**(b) Along & off south Tamil Nadu coast**

Moderate sea conditions are very likely to prevail till evening of 3<sup>rd</sup> December.

**(iv) Fishermen Warning:**

Fishermen are advised not to venture into **Southwest and adjoining westcentral Bay of Bengal and along & off North Tamil Nadu, Puducherry and South Andhra Pradesh Coasts** till evening of 3<sup>rd</sup> December.

**(v) Impact Expected and Action Suggested due to heavy rain and strong winds (north Tamil Nadu, Puducherry and south Andhra Pradesh) on 3rd December**

**Impact Expected:**

- ❖ Damage to orchards, horticulture & floriculture, standing crops including banana, papaya and drumstick trees due to inundation, strong winds and sea spray.
- ❖ Damage to Kutcha roads and culverts.
- ❖ Inundation/ water logging in low-lying areas in coastal districts due to heavy rainfall and flash flood. Flooding of escape routes and damage to salt pans.
- ❖ Riverine flooding in some river catchments. Please refer advisories by Central Water Commission in this regard.
- ❖ Occasional reduction in visibility due to heavy rainfall.
- ❖ Disruption of traffic due to water logging.
- ❖ Localized Landslides/Mudslides.

**Action suggested:**

- ❖ Fishermen are advised not to venture into Southwest and adjoining westcentral Bay of Bengal and along & off North Tamil Nadu, Puducherry and South Andhra Pradesh Coasts till 3<sup>rd</sup> evening.
- ❖ People in affected areas to remain indoors.
- ❖ Take safe shelters; do not take shelter under trees, as there could be lightning.
- ❖ Movement in motor boats unsafe.
- ❖ Tourism and recreational activities to be regulated.
- ❖ Surface transport and helicopter services to be regulated.

**Monica Sharma  
Scientist-E, IMD, New Delhi**

**Realized Rainfall (from 0830 hrs IST to 0530 hrs IST of today, the 3rd December):**

**Coastal Andhra Pradesh & Yanam:** Chittamur\_ARG (dist. Tirupati) 28, Edagali (dist Sri Potti Sriramulu Nellore) & Alampadu (dist Tirupati) 24 each, Vidyanagar (dist Tirupati) 20, Gunupudu (dist. Tirupati) 19, Manubolu (dist Sri Potti Sriramulu Nellore) 18, Nellore (dist Sri Potti Sriramulu Nellore) 9, Kakinada (dist Kakinada), Kavali (dist Sri Potti Sriramulu Nellore) & Narsapur (dist West Godavari) 1 Each;

**Tamilnadu Puducherry & Karaikal:** Hindustan\_University (dist. Kanchipuram) 14, VIT\_Chennai (Chengalpattu) 11, Tondi (dist Ramanathapuram) & Sathyabama\_University (dist. Kanchipuram) 10 each, Tiruvarur (dist. Tiruvarur) 9, Karaikal (dist Karaikal) 7, Chennai (Nungambakkam) (dist Chennai) 5, Nagapattinam (dist Nagapattinam) 5, Cuddalore (dist Cuddalore) 4, Madurai AP (dist Madurai), Chennai (minambakkam) AP (dist Chennai) 3 Each, Pondicherry (dist Puducherry) 2, Adiramapatinam (dist Thanjavur)1;

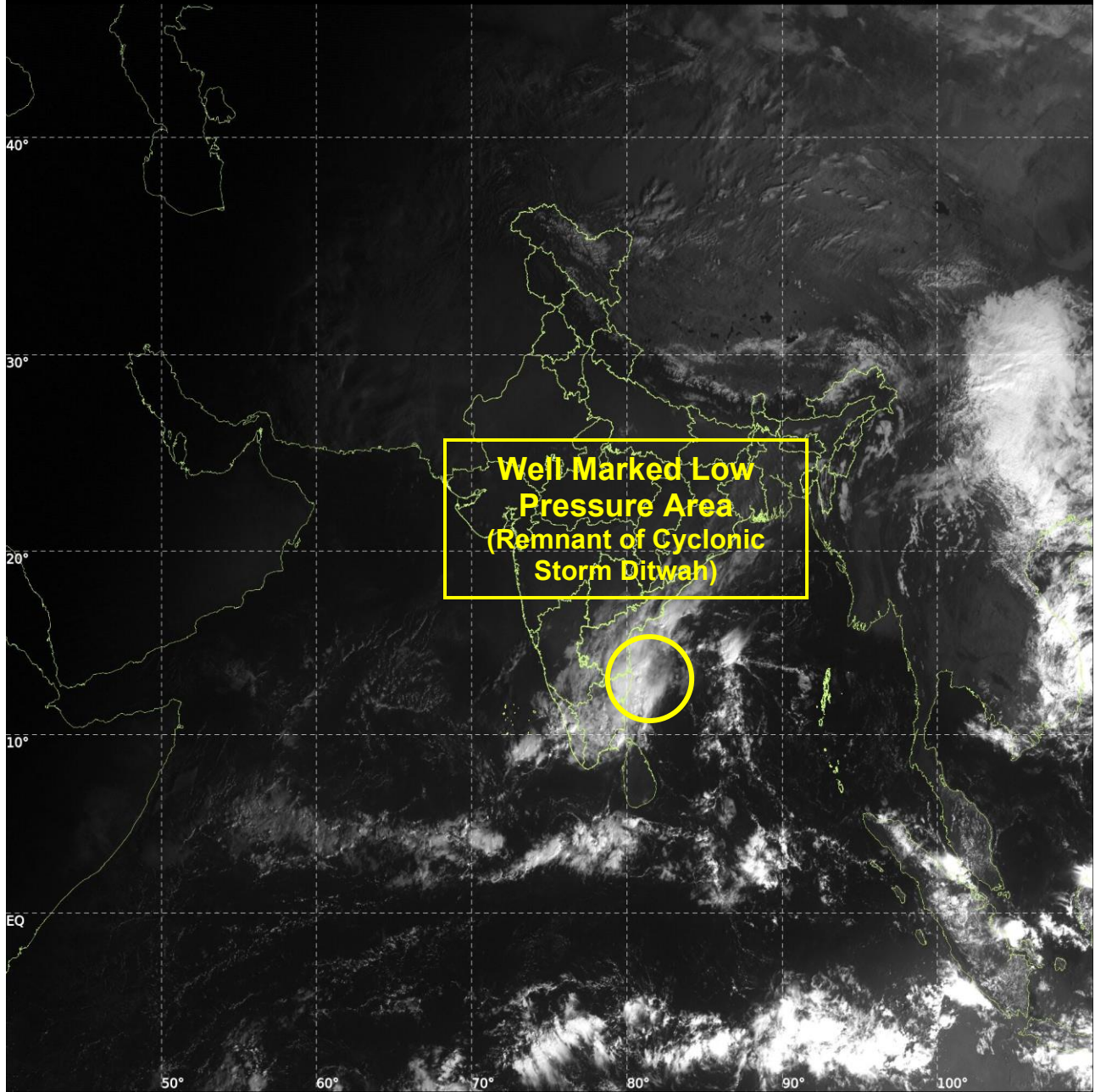
Kerala: Udumbannoor (dist. Idukki) 9 , Vannamada (dist. Palakkad) 7, Pothundy dam (dist. Palakkad) & Cheruthoni (dist. Palakkad) 5 each; Rayalaseema: Tirupathi (dist Tirupati) 2. Details are given in

This is the last bulletin in association with this system. However, regular bulletins/messages will continue in association with the remnant of this system from National Weather Forecasting Centre/ Regional Meteorological Centres/ Meteorological Centres.

*Copy to: ACWC Kolkata/ACWC Chennai/CWC Bhubaneswar/CWC Vishakhapatnam/CWC Thiruvananthapuram/ Meteorological Centre Vijay Puram/ and Meteorological Centre Amaravati*

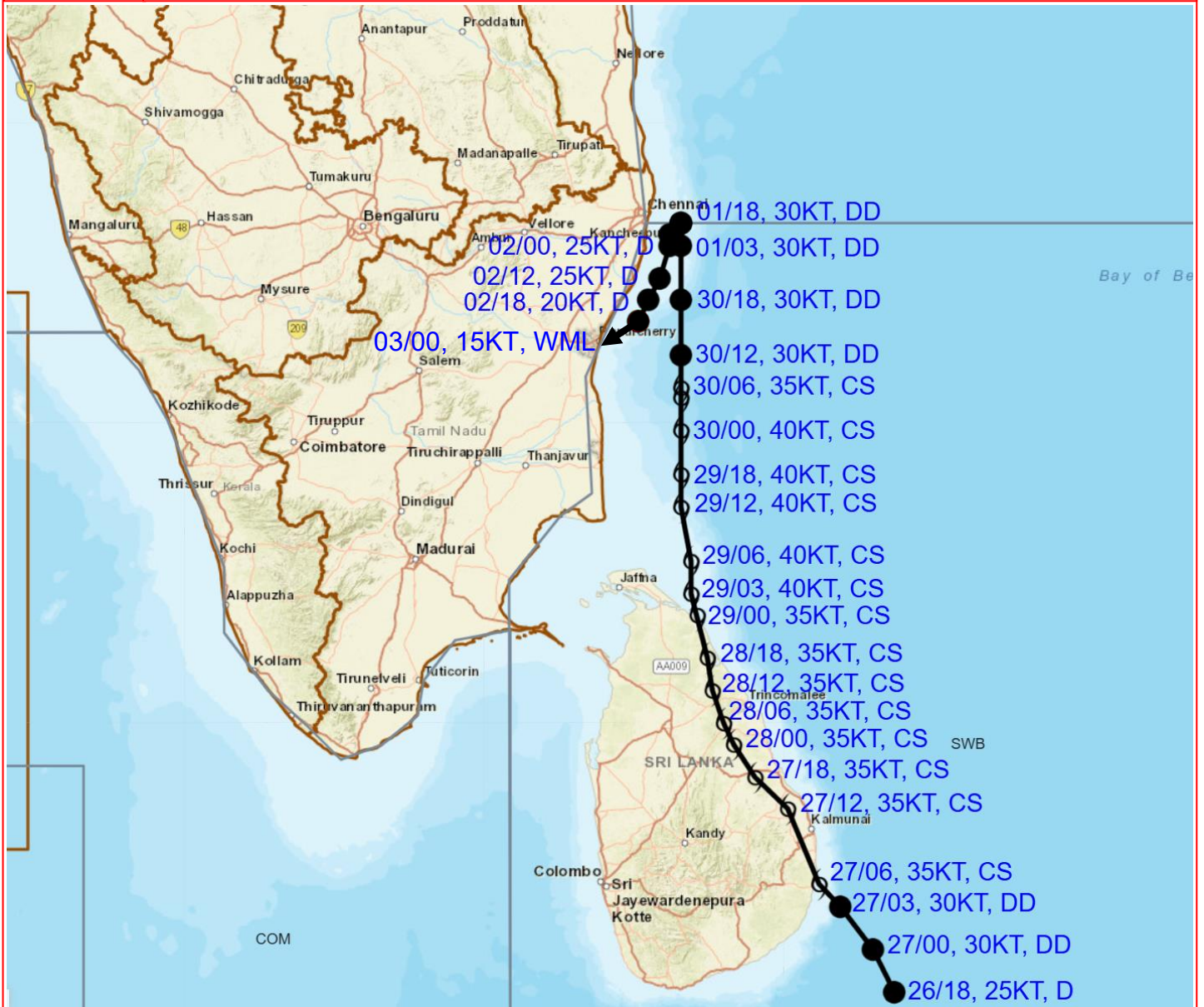


INSAT-3DS IMG, Visible Count @ 0.65  $\mu\text{m}$   
GMT:03-12-2025/(0300-0327) IST:03-12-2025/(0830-0857)  
L1C MERCATOR (LINEAR STRETCH: 0.5%)





# OBSERVED TRACK OF CYCLONIC STORM “DITWAH” OVER SOUTHWEST BAY OF BENGAL DURING 26<sup>TH</sup> NOVEMBER TO 03<sup>RD</sup> DECEMBER 2025



DATE/TIME IN UTC

IST=UTC + 0530

L: LOW PRESSURE AREA

WML: WELL MARKED LOW PRESSURE AREA

D: DEPRESSION (17-27 KT)

DD: DEEP DEPRESSION (28-33 KT)

CS: CYCLONIC STORM (34-47 KT)

SCS: SEVERE CYCLONIC STORM (48-63KT)

VSCS: VERY SEVERE CYCLONIC STORM (64-89 KT)

ESCS: EXTREMELY SEVERE CYCLONIC STORM (90-119 KT)

SuCS: SUPER CYCLONIC STORM (≥ 120 KT)

● LESS THAN 34 KT

○ 34-47 KT

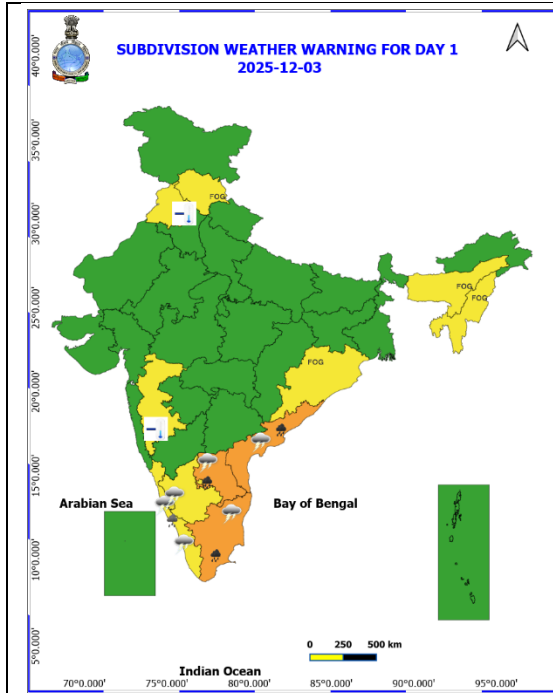
⊖ ≥ 48 KT

— OBSERVED TRACK

— FORECAST TRACK

▲ CONE OF UNCERTAINTY

# WEATHER WARNING GRAPHICS



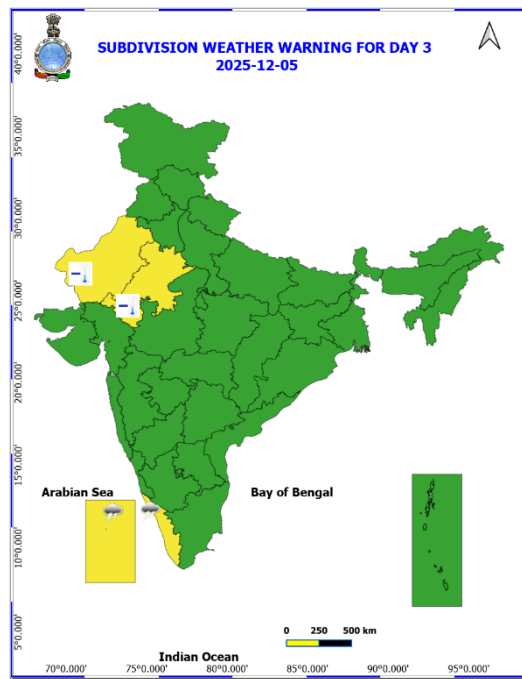
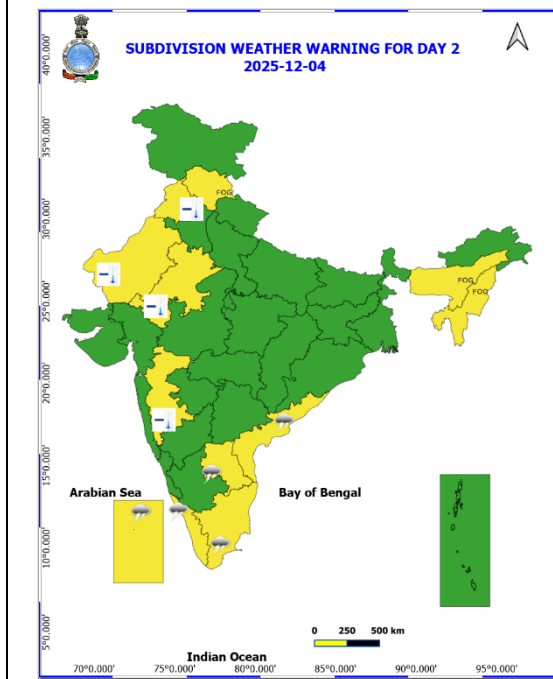
- Heavy Rain
- Very Heavy Rain
- Extremely Heavy Rain

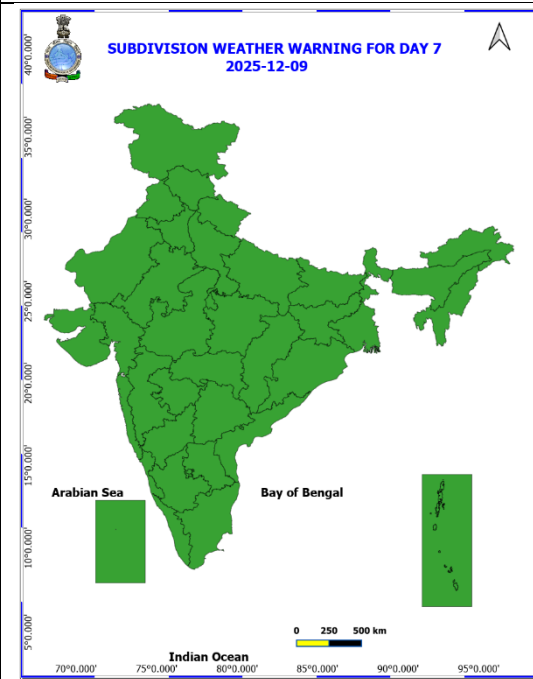
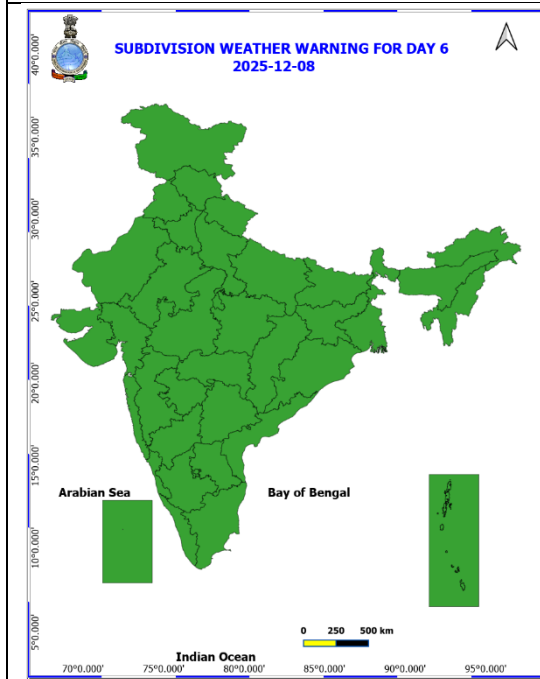
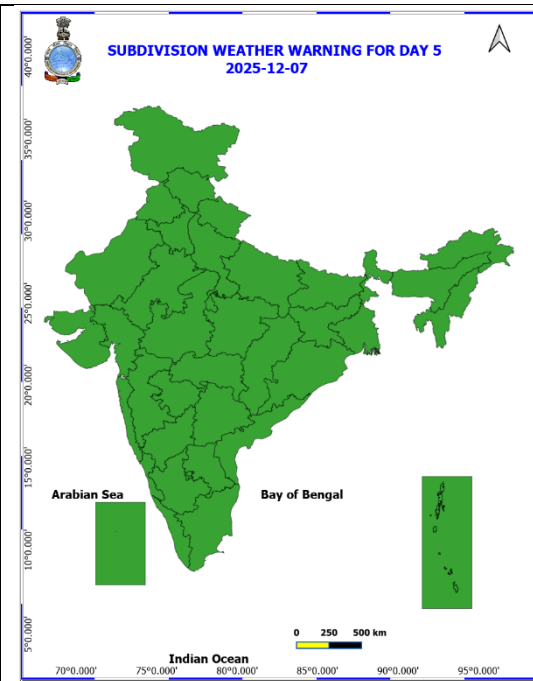
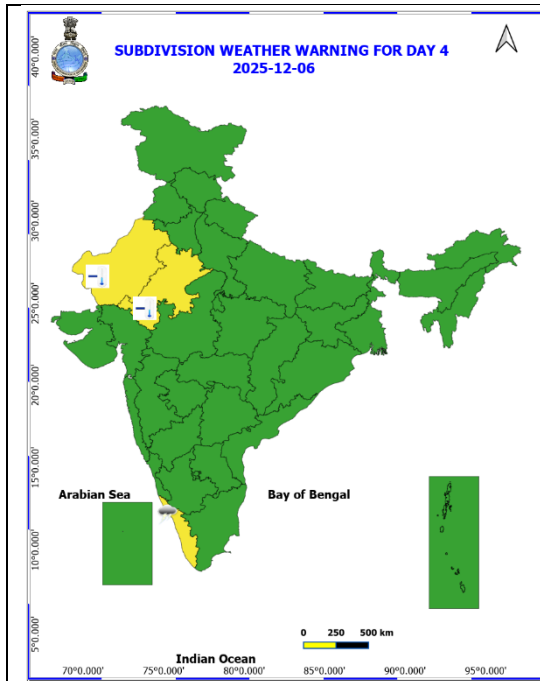
### COLOUR CODED WARNING



### Probabilistic Forecast

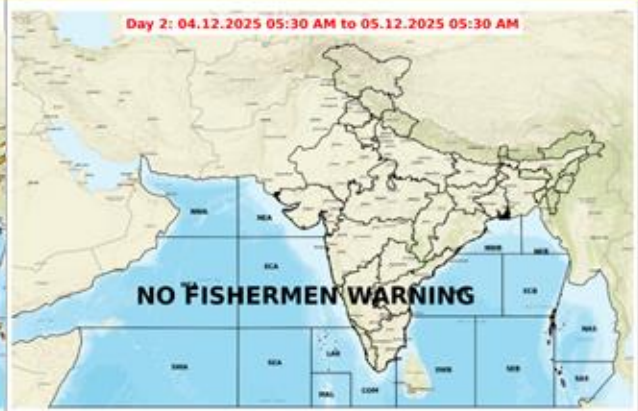
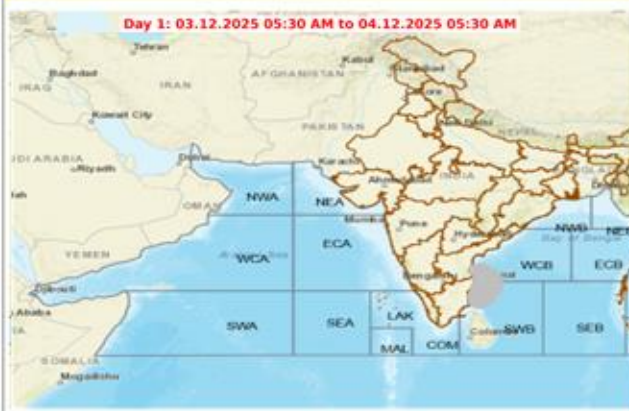
Terms	Probability of Occurrence (%)
Unlikely	< 25
Likely	25 - 50
Very Likely	50 - 75
Most Likely	> 75





- Action may be taken based on **ORANGE AND RED COLOUR** warnings.
- Vulnerable regions likely urban and hilly areas action may be initiated for heavy rainfall warning.
- As the lead period increases forecast accuracy decreases.

Fishermen Warning Graphics



**Legend**

- |   |   |
|---|---|
| Squally Weather with wind speed 35-45 kmph gusting to 55 kmph | Squally wind with speed 55-65 kmph gusting to 75 kmph       |
| Squally Weather with wind speed 40-50 kmph gusting to 60 kmph | CS with Gale winds with speed 60-80 kmph gusting to 90 kmph |
| Squally Weather with wind speed 45-55 kmph gusting to 65 kmph | SCS with Gale wind speed 90-110 kmph gusting to 120 kmph    |
| Squally wind with speed 45-55 kmph gusting to 65 kmph         | VSCS with Gale wind speed 120-165 kmph gusting to 185 kmph  |
| Squally wind with speed 50-60 kmph gusting to 70 kmph         | ESCS with Gale wind speed 165-220 kmph gusting to 245 kmph  |

Fishermen are advised not to venture into the marked areas.