



India Meteorological Department
Earth System Science Organisation
(Ministry of Earth Sciences)

Special Message (ARB/01/2021)

TIME OF ISSUE: 1330 HOURS IST

DATED: 13.05.2021

FROM: INDIA METEOROLOGICAL DEPARTMENT (FAX NO. 24643965/24699216/24623220)

TO: CONTROL ROOM, NDM, MINISTRY OF HOME AFFAIRS (FAX.NO. 23092398/23093750)

CONTROL ROOM NDMA (FAX.NO. 26701729)

CABINET SECRETARIAT (FAX.NO.23012284, 23018638)

PS TO HON'BLE MINISTER FOR S & T AND EARTH SCIENCES (FAX NO.23316745)

SECRETARY, MOES (FAX NO. 24629777)

H.Q. (INTEGRATED DEFENCE STAFF AND CDS) (FAX NO. 23005137/23005147)

DIRECTOR GENERAL, DOORDARSHAN (23385843) DIRECTOR GENERAL, AIR (23421101, 23421105, 23421219)

PIB MOES (FAX NO. 23389042)

UNI (FAX NO. 23355841)

D.G. NATIONAL DISASTER RESPONSE FORCE (NDRF) (FAX NO. 26105912, 2436 3260)

DIRECTOR, PUNCTUALITY, INDIAN RAILWAYS (FAX NO. 23388503)

CHIEF SECRETARY, KERALA (FAX NO. 0471-2327176)

ADMINISTRATOR, LAKSHADWEEP ISLANDS (FAX NO. 0413-262184)

CHIEF SECRETARY, KARNATAKA (FAX NO. 080-22258913)

CHIEF SECRETARY, GOA (FAX NO. 0832-2415201)

CHIEF SECRETARY, MAHARASHTRA (FAX NO. 022- 22028594)

CHIEF SECRETARY, GUJARAT (FAX NO. 079-23250305)

CHIEF SECRETARY, DAMAN & DIU (FAX NO. 0260-2230775)

CHIEF SECRETARY, DADRA & NAGAR HAVELI (FAX NO. 0260-2645466)

Sub: Low pressure area over southeast Arabian Sea & adjoining Lakshadweep area & it's likely intensification into a Cyclonic Storm by 16th May 2021

A low pressure area has formed over southeast Arabian Sea & adjoining Lakshadweep area today, the 13th May morning (0830 hrs IST). It is very likely to become well marked over Lakshadweep area by 14th morning, concentrate into a Depression over the same region by 15th morning and intensify into a Cyclonic Storm during the subsequent 24 hours. It is very likely to intensify further and move north-northwestwards towards Gujarat and adjoining Pakistan coasts. It is likely to reach near Gujarat coast around 18th May evening.

Warnings:

(i) Rainfall:

- **Lakshadweep Islands:** Light to moderate rainfall at most places with heavy to very heavy falls at a few places with extremely heavy falls (≥ 20 cm) at isolated places very likely on 13th & 14th May, heavy to very heavy falls at a few places on 15th May, heavy to very heavy falls at isolated places on 16th May.
- **Kerala:** Light to moderate rainfall at most places with heavy to very heavy falls at isolated places very likely over Kerala on 14th May, heavy to very heavy falls at a few places with extremely heavy falls (≥ 20 cm) at isolated places on 14th & 15th and heavy to very heavy falls at isolated places on 16th & 17th May.
- **Tamil Nadu (Ghat districts):** Light to moderate rainfall at many places with heavy to very heavy falls at isolated places very likely on 14th May, heavy to very heavy falls with extremely heavy falls at isolated places on 15th May and heavy to very heavy falls at isolated places on 16th May.
- **Karnataka (coastal & adjoining Ghat districts):** Light to moderate rainfall at many places with heavy falls at isolated places very likely on 13th, heavy to very heavy falls at isolated places on 14th, heavy to very heavy falls at a few paces with extremely heavy falls at isolated places on

Spatial rainfall distribution: Isolated: <25%, A few: 26-50%, Many: 51-75%, Most: 76-100%

Rainfall amount (mm): Heavy rain: 64.5 – 115.5, Very heavy rain: 115.6 – 204.4, Extremely heavy rain: 204.5 or more.

15th, heavy to very heavy fall at a few places on 16th and heavy to very heavy falls at isolated places on 17th May.

- **South Konkan & Goa:** Light to moderate rainfall at many places with heavy falls at isolated places very likely on 15th and heavy to very heavy falls at a few paces on 16th & 17th May.
- **Gujarat:** Rainfall activity is very likely to commence from 17th May with significant increase during the subsequent 2 days with heavy to very heavy rainfall at a few places over Saurashtra & Kutch on 18th and isolated heavy to very heavy falls over Kutch & adjoining southwest Rajasthan on 19th May.

(ii) Wind warning

- Squally weather with wind speed reaching 40-50 kmph gusting to 60 kmph is very likely over southeast Arabian Sea and adjoining Lakshadweep – Maldives area and equatorial Indian Ocean on 13th & 14th May. It is very likely to increase gradually becoming 50- 60 kmph gusting to 70 kmph over the same region from 15th morning.
- It is likely to increase gradually becoming Gale wind speed reaching 60 – 70 kmph gusting to 80 kmph over east-central Arabian Sea and adjoining southeast Arabian Sea and Lakshadweep area from 16th May morning.
- Squally wind speed reaching 40-50 kmph gusting to 60 kmph likely along & off Kerala coast on 14th May and 50-60 kmph gusting to 70 kmph along & off Kerala - Karnataka coasts on 15th becoming gale winds speed reaching 60-70 kmph gusting to 80 kmph on 16th May.
- Squally wind speed reaching 40-50 kmph gusting to 60 kmph likely along & off south Maharashtra & Goa coasts on 15th and 50-60 kmph gusting to 70 kmph along & off south Maharashtra –Goa coasts on 16th May.
- Squally wind speed reaching 40-50 kmph gusting to 60 kmph likely over northeast Arabian Sea and along & off south Gujarat & Daman and Diu coasts on 17th morning and gradually increase becoming Gale winds speed reaching 60-70 kmph gusting to 80 kmph over northeast Arabian Sea along & off Gujarat coast from 18th May morning . It is likely to increase gradually till 18th evening.

(iii) Sea condition

- Sea conditions over southeast Arabian Sea and adjoining Lakshadweep - Maldives area & equatorial Indian Ocean will be rough to very rough on 13th & 14th May.
- Sea condition over eastcentral Arabian Sea will be very rough to high on 15th May and High to very High on 16th May and over northeast Arabian Sea from 18th May.
- Sea conditions will be rough to very rough over Comorin area and along & off Kerala coast on 14th & 15th, very rough to High over east central Arabian Sea along & off Karnataka coast on 15th May and Maharashtra – Goa coasts on 15th & 16th May. It is very likely to be very rough to High over northeast Arabian Sea along & off south Gujarat coast from 17th May morning.

(iv) Tidal wave Warning

- Tidal wave of about 1 meter height above the astronomical tide is very likely to inundate low lying areas of Lakshadweep Islands on 15th & 16th May.

(v) Fishermen Warning

- Fishermen out in the Deep Sea are advised to return to coast.
- The fishermen are advised not to venture into southeast Arabian Sea, Lakshadweep – Maldives areas from 13th May, east central Arabian Sea along & off Karnataka coast from 14th May, into eastcentral Arabian Sea and along & off Maharashtra – Goa coasts from 15th May and into eastcentral & adjoining northeast Arabian Sea along & off Gujarat coast from 17th May.

Spatial rainfall distribution: Isolated: <25%, A few: 26-50%, Many: 51-75%, Most: 76-100%

Rainfall amount (mm): Heavy rain: 64.5 – 115.5, Very heavy rain: 115.6 – 204.4, Extremely heavy rain: 204.5 or more.

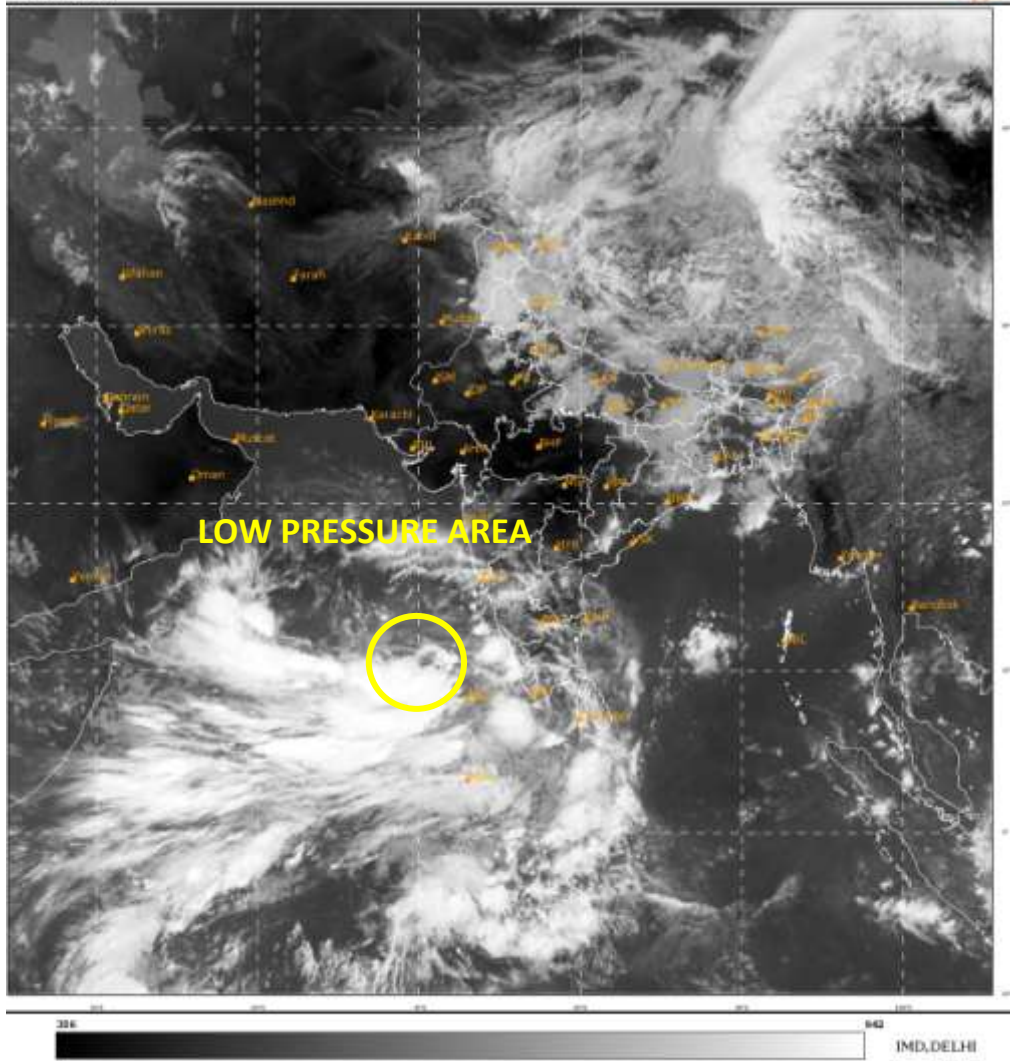
The development of this system is being closely monitored and concerned state governments are being informed regularly.

Kindly visit www.imd.gov.in, www.rsmcnewdelhi.imd.gov.in and www.mausam.imd.gov.in for updates on the system.

(Sunitha S. Devi)
Scientist-F
Cyclone Warning Division

Copy to: ACWC Chennai/ ACWC Mumbai/ MC Goa/ MC Bengaluru/ CWC Ahmedabad/ Thiruvananthapuram.

Spatial rainfall distribution: Isolated: <25%, A few: 26-50%, Many: 51-75%, Most: 76-100%
Rainfall amount (mm): Heavy rain: 64.5 – 115.5, Very heavy rain: 115.6 – 204.4, Extremely heavy rain: 204.5 or more.



Spatial rainfall distribution: Isolated: <25%, A few: 26-50%, Many: 51-75%, Most: 76-100%
Rainfall amount (mm): Heavy rain: 64.5 – 115.5, Very heavy rain: 115.6 – 204.4, Extremely heavy rain: 204.5 or more.