



**India Meteorological Department
(Ministry of Earth Sciences)**

National Bulletin No. 20 (BOB/08/2025)

TIME OF ISSUE: 0930 HOURS IST

DATED: 28.11.2025

FROM: INDIA METEOROLOGICAL DEPARTMENT (FAX NO. 24643965/24699216/24623220)

TO: CONTROL ROOM, NDM, MINISTRY OF HOME AFFAIRS (FAX.NO. 23093750)

CONTROL ROOM NDMA (FAX.NO. 26701729)

CABINET SECRETARIAT (FAX.NO.23012284, 23018638)

PS TO HON'BLE MINISTER FOR S & T AND EARTH SCIENCES (FAX NO.23316745)

SECRETARY, MOES (FAX NO. 24629777)

H.Q. (INTEGRATED DEFENCE STAFF AND CDS) (FAX NO. 23005137/23005147)

DIRECTOR GENERAL, DOORDARSHAN (23385843)

DIRECTOR GENERAL, AIR (23421105, 23421219)

PIB MOES (FAX NO. 23389042)

UNI (FAX NO. 23355841)

D.G. NATIONAL DISASTER RESPONSE FORCE (NDRF) (FAX NO. 26105912, 2436 3260)

DIRECTOR, PUNCTUALITY, INDIAN RAILWAYS (FAX NO. 23388503)

CHIEF SECRETARY, ODISHA (FAX NO. 0674-2536660)

CHIEF SECRETARY, WEST BENGAL (FAX NO. 033-22144328)

CHIEF SECRETARY, ANDAMAN & NICOBAR ISLANDS (FAX NO. 03192-232656)

CHIEF SECRETARY, TAMIL NADU (FAX NO. 044-25672304)

CHIEF SECRETARY, ANDHRA PRADESH (FAX NO. 0863-2441029)

CHIEF SECRETARY, PUDUCHERRY (FAX NO. 0413-2334145)

CHIEF SECRETARY, KERALA (FAX NO. 0471-2327176)

CHIEF SECRETARY, LAKSHADWEEP (FAX NO. 048-96268124)

Subject: Cyclonic Storm Ditwah [Pronunciation: Ditwah] over coastal Sri Lanka & adjoining southwest Bay of Bengal: Cyclone Alert for north Tamil Nadu & Puducherry and adjoining south Andhra Pradesh coasts (Orange Message)

The **Cyclonic Storm Ditwah [Pronunciation: Ditwah]** over coastal Sri Lanka and adjoining southwest Bay of Bengal moved north-northwestwards with the speed of 7 kmph during past 6 hours and lay centered at 0530 hrs IST of today, the 28th November 2025 over the same region, near latitude 8.2°N and longitude 81.1°E, about 50 km south-southwest of Trincomalee (Sri Lanka), 90 km northwest of Batticaloa (Sri Lanka), 230 km north of Hambantota (Sri Lanka), 440 km south-southeast of Puducherry (India) and 540 km south of Chennai (India).

It is very likely to continue to move north-northwestwards across Sri Lanka coast & adjoining southwest Bay of Bengal and reach over southwest Bay of Bengal near North Tamil Nadu, Puducherry and adjoining south Andhra Pradesh coasts by early morning of 30th November.

Forecast track and intensity are given in Table below

Date/Time (IST)	Position (Lat. °N/ Long. °E)	Maximum Sustained Surface Wind Speed (Kmph)	Category Of Cyclonic Disturbance
28.11.25/0530	8.2/81.1	65-75 gusting to 85	Cyclonic Storm
28.11.25/1130	8.5/80.9	65-75 gusting to 85	Cyclonic Storm
28.11.25/1730	8.8/80.8	65-75 gusting to 85	Cyclonic Storm
28.11.25/2330	9.1/80.7	70-80 gusting to 90	Cyclonic Storm
29.11.25/0530	9.5/80.6	70-80 gusting to 90	Cyclonic Storm
29.11.25/1730	10.3/80.5	70-80 gusting to 90	Cyclonic Storm
30.11.25/0530	11.1/80.4	70-80 gusting to 90	Cyclonic Storm
30.11.25/1730	12.0/80.4	65-75 gusting to 85	Cyclonic Storm
01.12.25/0530	13.0/80.4	55-65 gusting to 75	Deep Depression
01.12.25/1730	14.0/80.5	45-55 gusting to 65	Depression

(i) Rainfall Warning:

- ❖ **Tamil Nadu & Puducherry:** Light to moderate rainfall at most places with **heavy to very heavy at many places & extremely heavy rainfall (>20 cm) at isolated places** on 28th and 29th November, 2025. Thereafter, rainfall would gradually decrease to light to moderate at many places with **heavy to very heavy falls** at isolated places on 30th November, 2025.
- ❖ **Coastal Andhra Pradesh:** Light to moderate rainfall at many places with **heavy rainfall** at isolated places is very likely over south coastal Andhra Pradesh on 28th November. Thereafter, it is very likely to increase becoming light to moderate rainfall at most places with **heavy to very rainfall** at isolated places on 29th November and **heavy to very heavy at a few places & extremely heavy rainfall (>20 cm) at isolated places on 30th November**. It would then decrease gradually becoming light to moderate rainfall at many places with **heavy to very heavy rainfall** at isolated places on 1st December and **heavy rainfall** at isolated places on 02nd December.
- ❖ **Rayalaseema:** Light to moderate rainfall at many places with **heavy rainfall** at isolated places is very likely on 28th November. Thereafter, it is very likely to increase becoming light to moderate rainfall at most places with **heavy to very rainfall** at isolated places on 29th November and **heavy to very heavy at a few places & extremely heavy rainfall (>20 cm) at isolated places on 30th November**. It would then decrease gradually becoming light to moderate rainfall at many places with **heavy rainfall** at isolated places on 1st December.
- ❖ **Kerala & Mahe:** Light to moderate rainfall at many places with **heavy rainfall** at isolated places is very likely during 28th-29th November.
- ❖ **Telangana:** Light to moderate rainfall at a few places with **heavy rainfall** at isolated places is very likely on 30th November and 01st December.

(ii) Wind Warning:

(a) Southwest Bay of Bengal, Gulf of Mannar, Comorin area and along & off Sri Lanka coasts

Gale wind speed reaching 65-75 gusting to 85 kmph is prevailing. It would increase becoming 70-80 kmph gusting to 90 kmph from night of 28th till 30th morning. Thereafter it is likely to decrease gradually becoming squally wind speed reaching 55-65 gusting to 75 kmph by morning of 1st December.

(b) Along & off north Tamil Nadu & Puducherry Coasts

Squally wind speed reaching 50-60 gusting to 70 kmph is prevailing. It is likely to increase becoming Gale wind speed reaching 60-70 gusting to 80 kmph is likely to prevail from evening of 28th November, 70-80 kmph gusting to 90 kmph by 29th morning till 30th morning. Thereafter it is likely to decrease gradually becoming squally wind speed reaching 55-65 gusting to 75 kmph by 1st December morning.

(c) Along & off south Tamil Nadu coast

Squally wind speed reaching 55-65 gusting to 75 kmph is prevailing. It is likely to increase becoming Gale wind speed reaching 60-70 gusting to 80 kmph is likely to prevail along & off south Tamil Nadu from evening of 28th till 30th November midnight.

(d) Adjoining Westcentral Bay of Bengal and along & off south Andhra Pradesh coast:

Squally weather with wind speed reaching 35-45 kmph gusting to 55 kmph is prevailing. It is very likely to increase becoming squally winds speed reaching 50-60 kmph gusting to 70 kmph from 28th evening and Gale wind speed reaching 60-70 kmph gusting to 80 kmph from 29th evening till 30th morning. Thereafter, it is likely to decrease becoming squally wind speed reaching 50-60 kmph gusting to 70 kmph on 01st December morning and 45-55 kmph gusting to 65 kmph by evening of 1st December.

(d) Adjoining areas of Southeast Arabian Sea, Lakshadweep, Maldives and along & off Kerala coast:

Squally weather with wind speed reaching 45-55 kmph gusting to 65 kmph likely to prevail during 28th-29th November.

(iii) Sea Condition:

(a) Southwest Bay of Bengal, Gulf of Mannar, Comorin area and along & off Sri Lanka coasts

Very rough to high sea conditions are likely to prevailing, it is likely to be high till 30th November. Thereafter it is likely to improve from 1st December morning.

(b) Along & off north Tamil Nadu & Puducherry Coasts

Rough to very rough sea conditions are prevailing. It is likely to become very rough to high sea conditions till 30th November. It is likely to improve gradually becoming very rough to rough from 1st December morning.

(c) Along & off south Tamil Nadu coast

Very rough to high sea condition are likely to prevail till 30th November midnight. It is likely to improve gradually becoming very rough to rough from 1st December morning.

(d) Adjoining Westcentral Bay of Bengal and along & off south Andhra Pradesh coast:

Moderate to rough sea conditions are prevailing and likely to become rough to very rough from 28th evening and high from 29th evening till 30th November. Thereafter, it is likely to improve gradually on 01st December morning.

(e) Adjoining areas of Southeast Arabian Sea, Lakshadweep, Maldives and along & off Kerala coast:

Rough to very rough sea conditions are likely during 28th-29th November.

Storm Surge Warning:

Storm surge of height about 1.0 to 1.5 m above the astronomical tide is likely to inundate the low-lying coastal areas of north Sri Lanka till 29th evening.

(iv) Fishermen Warning:

(a) Total suspension of fishing operations in coastal areas of Sri Lanka, Tamil Nadu, Puducherry and south Andhra Pradesh coasts till 01st December.

(b) Fishermen are advised not to venture into

- (i) Southwest Bay of Bengal, Gulf of Mannar, Comorin area and along & off Tamil Nadu, Puducherry & Sri Lanka coasts till 01st December.
- (ii) Adjoining areas of westcentral Bay of Bengal and along & off Andhra Pradesh coast till 1st December.
- (iii) Adjoining areas of Southeast Arabian Sea, Lakshadweep, Maldives and along & off Kerala coast till 30th November.

(c) Those out at sea should avoid southwest Bay of Bengal, Gulf of Mannar, Comorin area and along & off Tamil Nadu, Puducherry, south Andhra Pradesh & Sri Lanka coasts; adjoining westcentral Bay of Bengal till 01st December and Southeast Arabian Sea, Lakshadweep, Maldives and along & off Kerala coast till 30th November.

(v) Impact Expected and Action Suggested due to heavy rain and strong winds (Tamil Nadu, Puducherry and south Andhra Pradesh)

Impact Expected

- ❖ Major damage to thatched houses/ huts. Roof tops may blow off. Unattached metal sheets may fly.
- ❖ Damage to power and communication lines.
- ❖ Major damage to Kutcha and some damage to Pucca roads. Flooding of escape routes.
- ❖ Breaking of tree branches, uprooting of large avenue trees. Large-scale damage to banana and papaya trees. Large dead limbs blown from trees.
- ❖ Damage to paddy crops, horticultural and standing crops and orchards due to inundation & winds.
- ❖ Inundation of low-lying areas in coastal districts due to heavy rainfall and flash flood
- ❖ Localized Flooding of roads, water logging in low lying areas and closure of underpasses mainly in urban areas.
- ❖ Occasional reduction in visibility due to heavy rainfall.
- ❖ Disruption of traffic due to water logging and squally winds
- ❖ Localized Landslides/Mudslides It may lead to riverine flooding in some river catchments (for riverine flooding please visit Web page of CWC)
- ❖ Damage to embankments/ salt pans.
- ❖ Possibility of coastal flooding and coastal erosion is also very likely over coastal districts of Tamil Nadu and Puducherry and south Andhra Pradesh & Yanam.

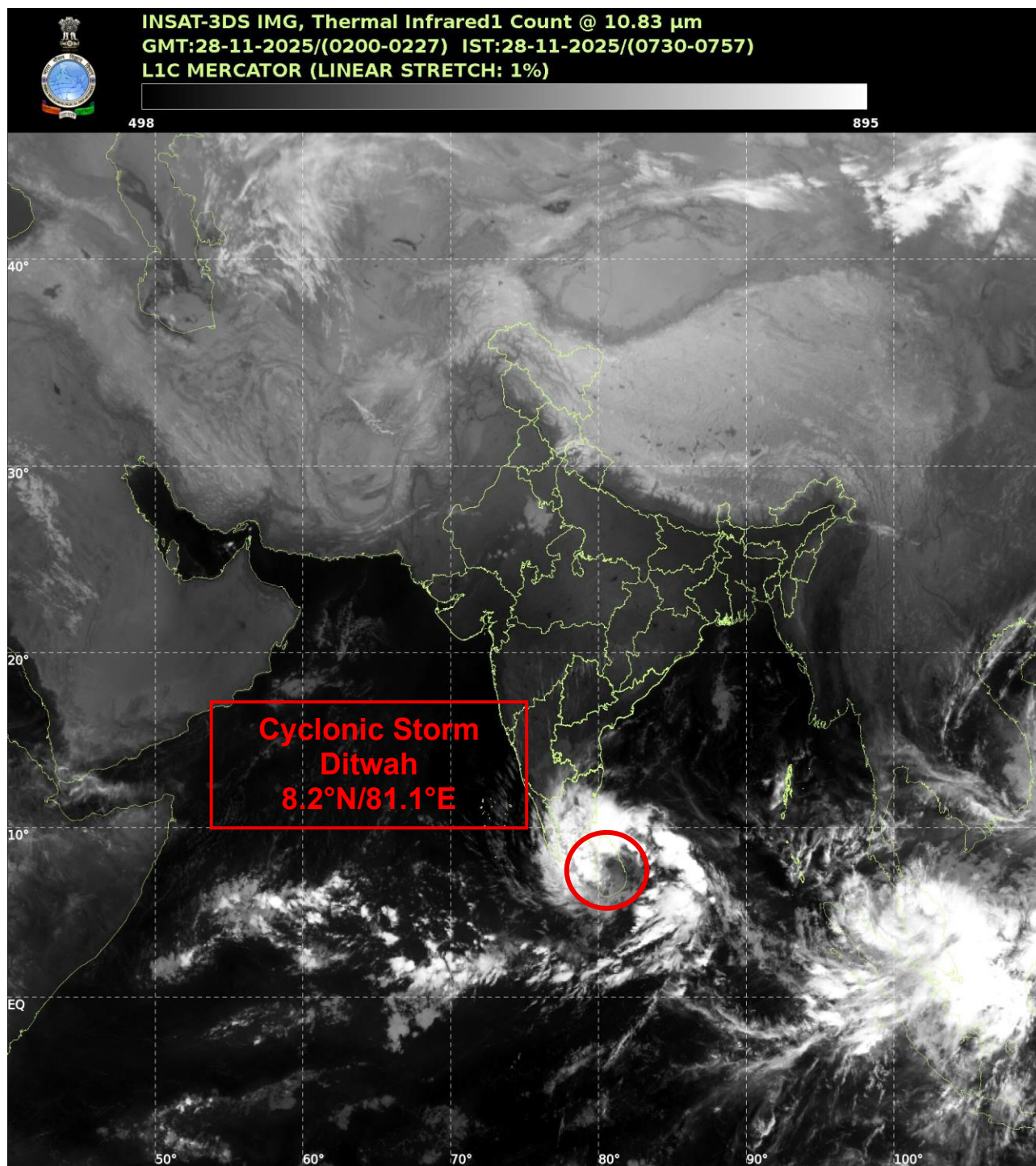
Action suggested:

- ❖ Total suspension of fishing operations.
- ❖ Coastal hutment dwellers to be moved to safer places. People in affected areas to remain indoors.
- ❖ Movement in motor boats unsafe.
- ❖ Judicious regulation of offshore/onshore operations
- ❖ People are advised to keep a watch on the weather for worsening conditions and be ready to move to safer places accordingly.
- ❖ Take safe shelters; do not take shelter under trees, as there could be lightning.
- ❖ In case of expected lightning, unplug electrical/ electronic appliances, immediately, get out of water bodies and keep away from all the objects that conduct electricity.
- ❖ Tourism and recreational activities to be regulated.
- ❖ Surface transport and helicopter services to be regulated.

Next bulletin will be issued at 1230 hours IST of today, the 28th November, 2025.

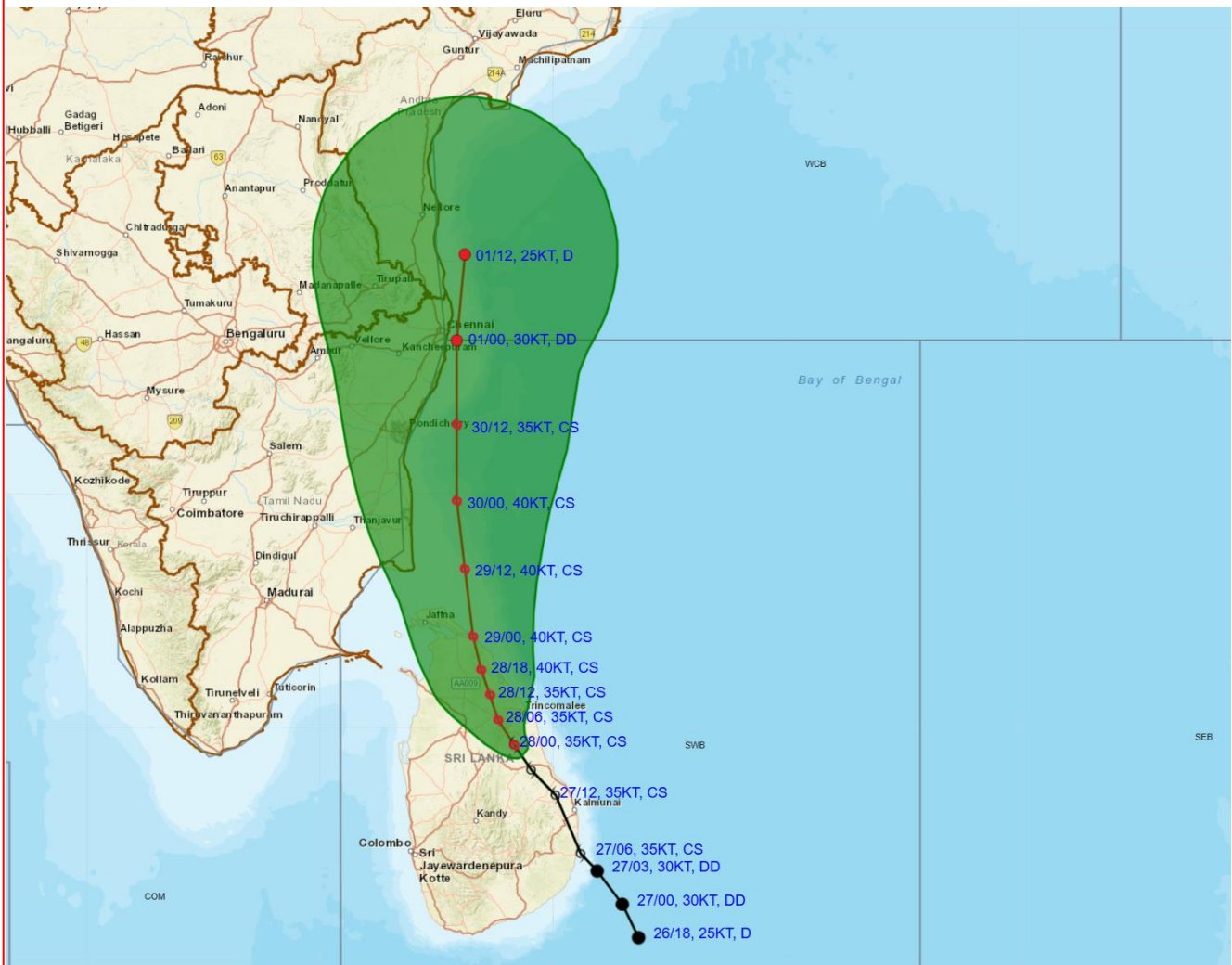
(Umasankar Das)
Scientist-D, IMD, New Delhi

Copy to: ACWC Kolkata/ACWC Chennai/CWC Bhubaneswar/CWC Vishakhapatnam/CWC Thiruvananthapuram/
Meteorological Centre Vijay Puram/ and Meteorological Centre Amaravati





**OBSERVED AND FORECAST TRACK OF CYCLONIC STORM “DITWAH”
OVER COASTAL SRI LANKA & ADJOINING SOUTHWEST BAY OF
BENGAL BASED ON 0000 UTC (0530 Hrs. IST) OF 28TH NOVEMBER 2025**



DATE/TIME IN UTC

IST=UTC + 0530

L: LOW PRESSURE AREA

WML: WELL MARKED LOW PRESSURE AREA

D: DEPRESSION (17-27 KT)

DD: DEEP DEPRESSION (28-33 KT)


CS: CYCLONIC STORM (34-47 KT)


SCS: SEVERE CYCLONIC STORM (48-63KT)


VSCS: VERY SEVERE CYCLONIC STORM (64-89 KT)

ESCS: EXTREMELY SEVERE CYCLONIC STORM (90-119 KT)

SuCS: SUPER CYCLONIC STORM (≥ 120 KT)


 **LESS THAN 34 KT**

 **34-47 KT**

 **≥ 48 KT**

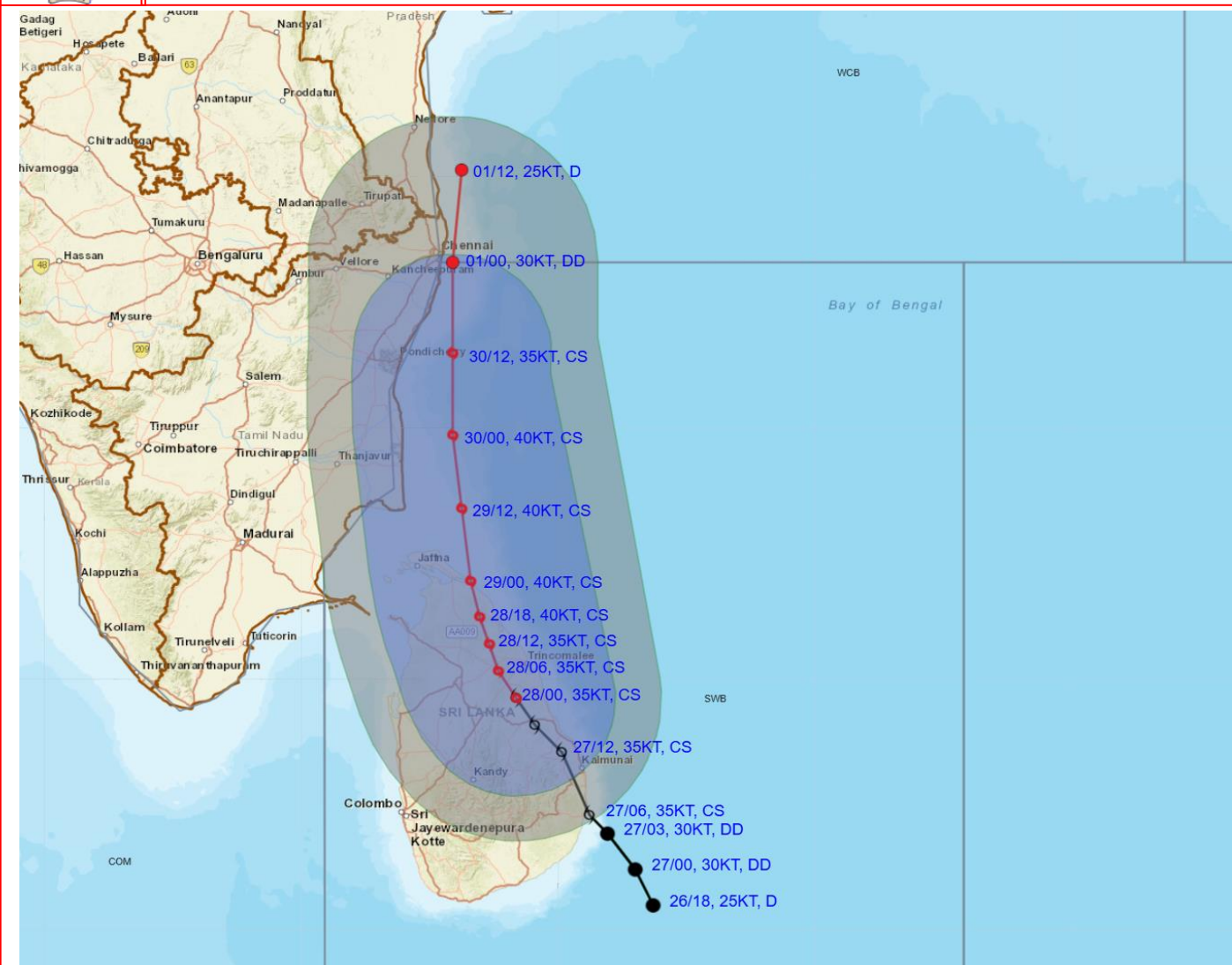
 **OBSERVED TRACK**

 **FORECAST TRACK**

 **CONE OF UNCERTAINTY**



OBSERVED AND FORECAST TRACK ALONGWITH QUADRANT WIND DISTRIBUTION OF CYCLONIC STORM “DITWAH” OVER COASTAL SRI LANKA & ADJOINING SOUTHWEST BAY OF BENGAL BASED ON 0000 UTC (0530 Hrs. IST) OF 28th NOVEMBER 2025



DATE/TIME IN UTC

IST=UTC + 0530

L: LOW PRESSURE AREA

WML: WELL MARKED LOW PRESSURE AREA

D: DEPRESSION (17-27 KT)

DD: DEEP DEPRESSION (28-33 KT)

CS: CYCLONIC STORM (34-47 KT)

SCS: SEVERE CYCLONIC STORM (48-63 KT)

VSCS: VERY SEVERE CYCLONIC STORM (64-89 KT)

ESCS: EXTREMELY SEVERE CYCLONIC STORM (90-119 KT)

SuCS: SUPER CYCLONIC STORM (≥ 120 KT)

● LESS THAN 34 KT

● 34-47 KT

● ≥ 48 KT

— OBSERVED TRACK

— FORECAST TRACK

▲ CONE OF UNCERTAINTY

AREA OF MAXIMUM SUSTAINED WIND SPEED:

■ 28-33 KT (52-61 KMPH)

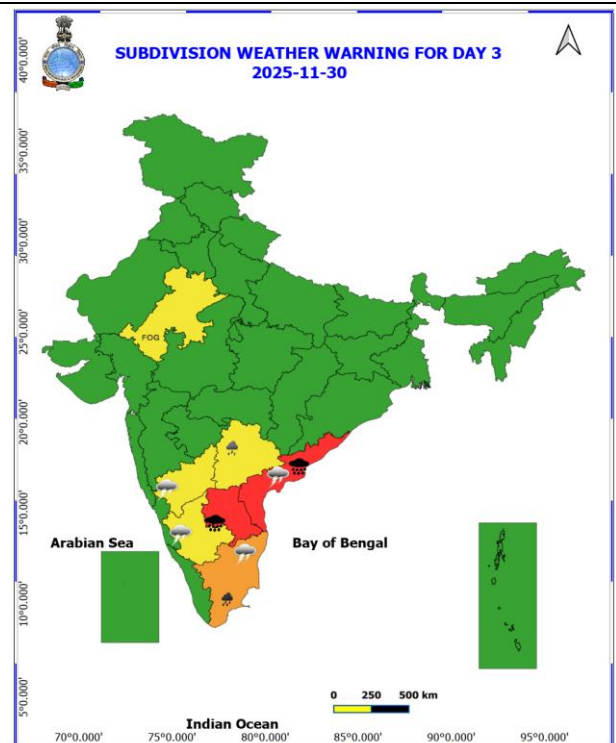
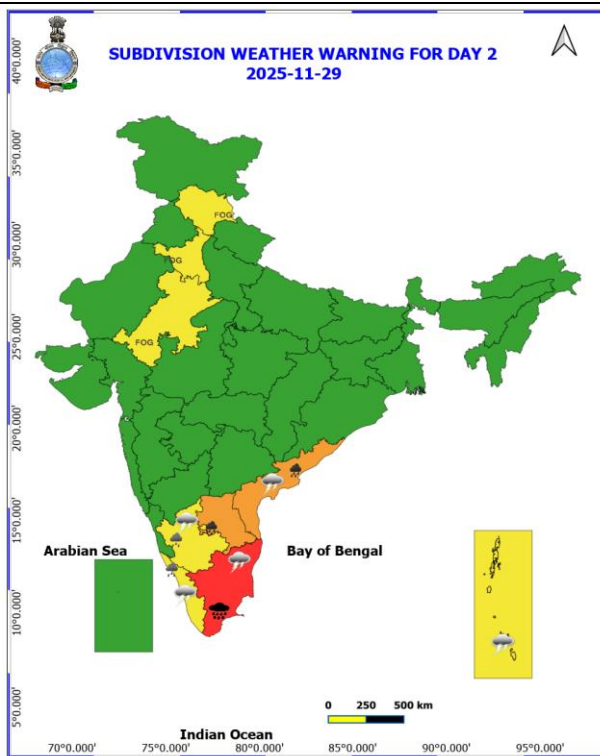
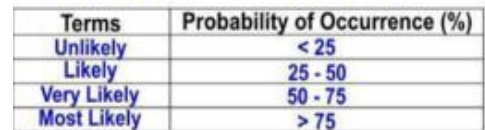
■ 34-49 KT (62-91 KMPH)

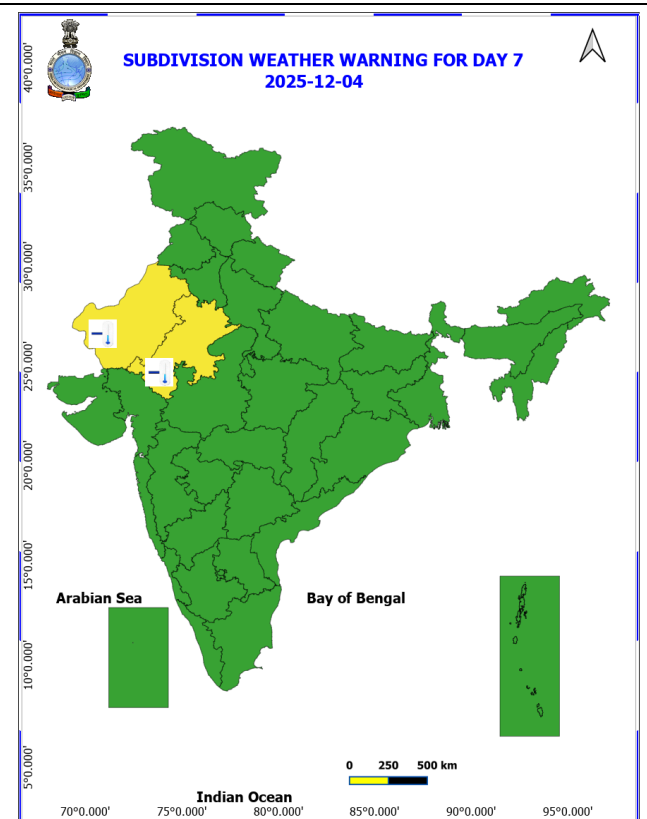
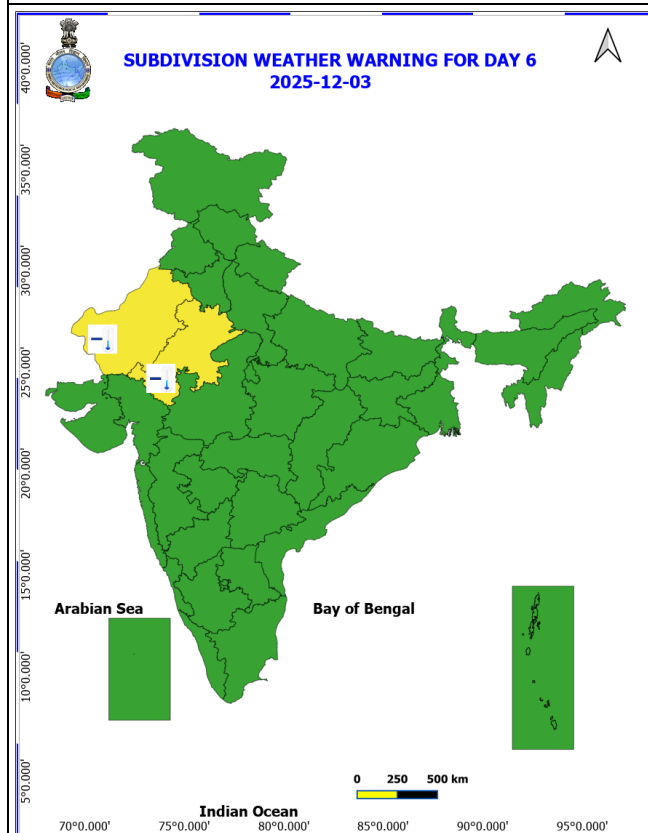
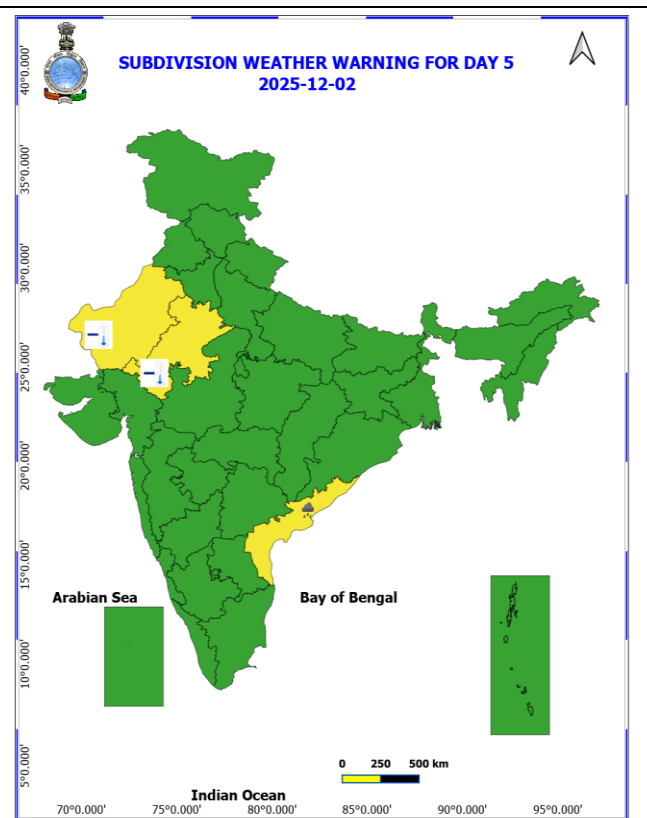
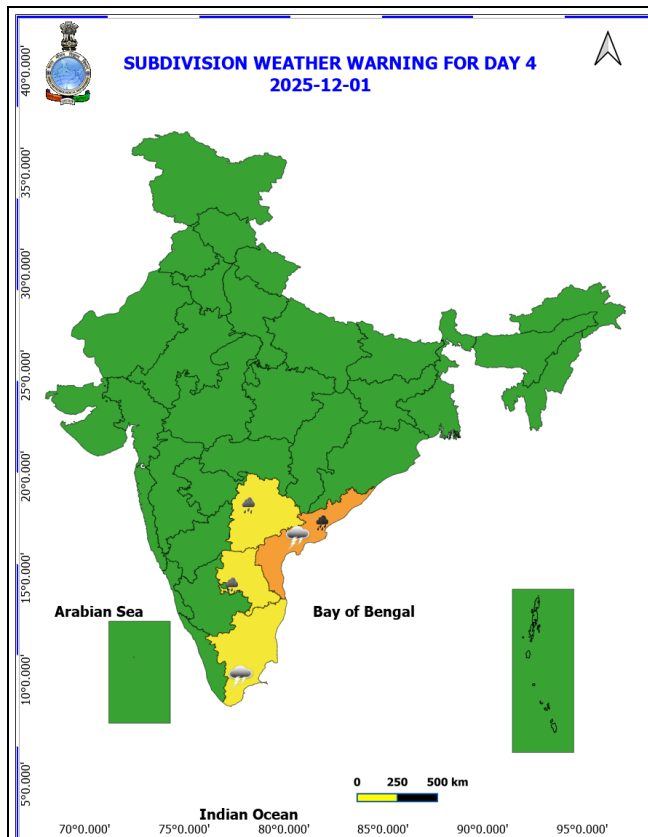
■ 50-63 KT (92-117 KMPH)

■ ≥ 64 KT (≥ 118 KMPH)

IMPACT OVER THE SEA

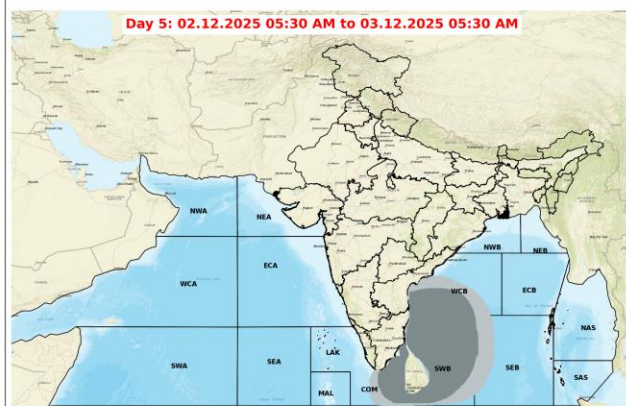
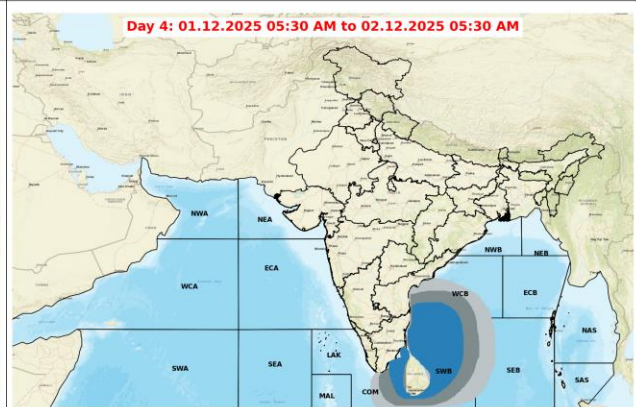
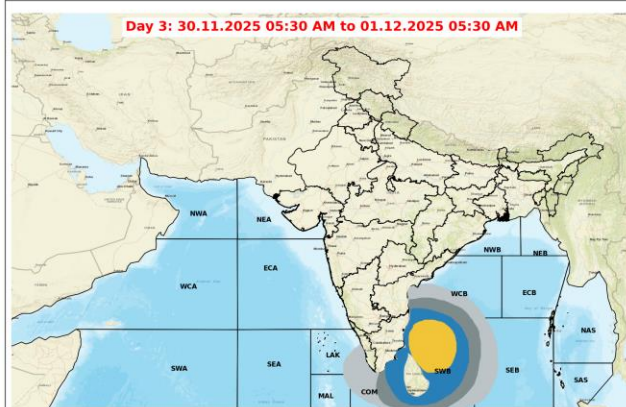
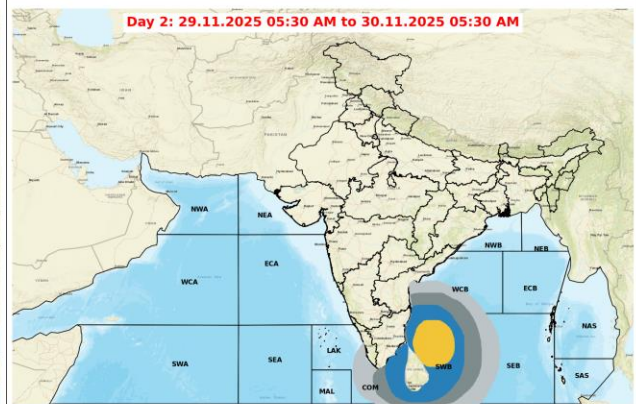
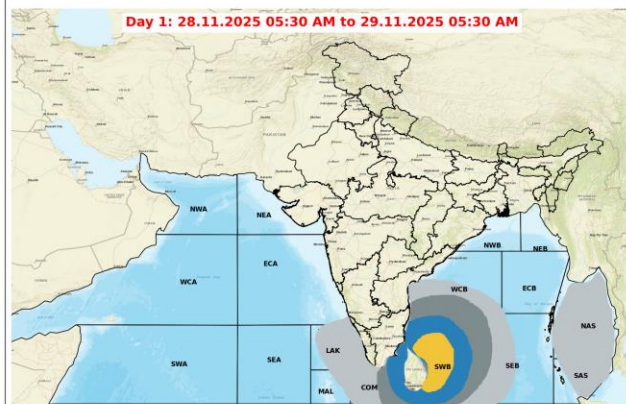
MSW (knot/kmph)	Impact	Action
28-33 (52-61)	Very rough seas	Total suspension of fishing operations
34-49 (62-91)	High to very high seas	Total suspension of fishing operations
50-63 (92-117)	Very high seas	Total suspension of fishing operations
≥ 64 (≥ 118)	Phenomenal	Total suspension of fishing operations





- Action may be taken based on **ORANGE AND RED** COLOUR warnings.
- Vulnerable regions likely urban and hilly areas action may be initiated for heavy rainfall warning.
- As the lead period increases forecast accuracy decreases.

Fishermen Warning Graphics



Legend

- | | |
|---|---|
| Squally Weather with wind speed 35-45 kmph gusting to 55 kmph | Squally wind with speed 55-65 kmph gusting to 75 kmph |
| Squally Weather with wind speed 40-50 kmph gusting to 60 kmph | CS with Gale winds with speed 60-80 kmph gusting to 90 kmph |
| Squally Weather with wind speed 45-55 kmph gusting to 65 kmph | SCS with Gale wind speed 90-110 kmph gusting to 120 kmph |
| Squally wind with speed 45-55 kmph gusting to 65 kmph | VSCS with Gale wind speed 120-165 kmph gusting to 185 kmph |
| Squally wind with speed 50-60 kmph gusting to 70 kmph | ESCS with Gale wind speed 165-220 kmph gusting to 245 kmph |

Fishermen are advised not to venture into the marked areas.