



**India Meteorological Department
(Ministry of Earth Sciences)**

NATIONAL BULLETIN NO. 16 (Land/04/2025)

TIME OF ISSUE:0220 HOURS IST

DATED: 10.09.2025

FROM: INDIA METEOROLOGICAL DEPARTMENT

(FAX NO. 24643965/24699216/24623220)

TO: CONTROL ROOM, NDM, MINISTRY OF HOME AFFAIRS (FAX.NO. 23093750)

CONTROL ROOM NDMA (FAX.NO. 26701729)

CABINET SECRETARIAT (FAX.NO.23012284, 23018638)

PS TO HON'BLE MINISTER FOR S & T AND EARTH SCIENCES (FAX NO.23316745)

SECRETARY, MOES (FAX NO. 24629777)

H.Q. (INTEGRATED DEFENCE STAFF AND CDS) (FAX NO. 23005137/23005147)

DIRECTOR GENERAL, DOORDARSHAN (23385843)

DIRECTOR GENERAL, AIR (23421105, 23421219)

PIB MOES (FAX NO. 23389042)

UNI (FAX NO. 23355841)

D.G. NATIONAL DISASTER RESPONSE FORCE (NDRF) (FAX NO. 26105912, 2436 3260)

DIRECTOR, PUNCTUALITY, INDIAN RAILWAYS (FAX NO. 23388503)

CHIEF SECRETARY, GOVT. OF GUJARAT (FAX NO. +9179 23250305)

CHIEF SECRETARY, GOVT. OF MAHARASHTRA (FAX NO. +9122 22028594)

CHIEF SECRETARY, DAMAN & DIU (FAX NO. 0260-2230775)

CHIEF SECRETARY, DADRA & NAGAR HAVELI (FAX NO. 0260-2645466)

CHIEF SECRETARY, GOA (FAX NO. 0832-2415201)

Subject: Depression over southeast Pakistan

The depression over southeast Pakistan moved westwards with the speed of 10 kmph during past 6 hours, lay centred at 2330 hrs IST of yesterday, the 09th September, 2025, over the same region near latitude 25.0°N and longitude 67.1°E, close to north of Karachi (Pakistan), 120 km west of Sakrand (Pakistan) 140 km of west-southwest of Hyderabad (Pakistan), and 260 km northwest of Naliya (Gujarat).

It is very likely to move nearly westwards across south Pakistan, maintain its intensity of depression during next 12 hours. Thereafter, it is likely to weaken gradually into a well marked low pressure area and emerge into northeast Arabian Sea during subsequent 12 hours.

Warnings:

(i) Rainfall Warning: NIL

(ii) Wind Warnings:

• Squally weather with wind speed reaching 45-55 kmph gusting to 65 kmph is likely to prevail over northeast Arabian Sea and along & off Saurashtra & Kutch and Pakistan coasts on 10th September and would gradually decrease thereafter.

(iii) Sea condition: Sea condition is likely to be rough over northeast and adjoining northwest Arabian Sea, along & off Saurashtra & Kutch and Pakistan coasts on 10th September and improve thereafter.

(iv) Fishermen Warning:

• Fishermen are advised not to venture into northeast Arabian Sea and along & off Saurashtra & Kutch and Pakistan coasts till 10th September, 2025.

• Small ships/shipping activities are to be monitored and regulated over north Arabian Sea till 10th September 2025.

(v) Impact Expected and Action Suggested due squally winds over Saurashtra & Kutch

Impact expected:

- ❖ Tourism and recreational activities may be affected.
- ❖ Helicopter services may get affected.
- ❖ Onshore and offshore operations may get affected.

Action suggested:

- ❖ Helicopter services to be regulated.
- ❖ Judicious regulation of tourism, recreational and onshore/offshore operations till 10th September 2025.

Next bulletin will be issued at 0830 hrs IST of today, the 10th September, 2025.

(Suprit Kumar)

Scientist-E, IMD, New Delhi

Copy to: Regional Meteorological Centres- Mumbai, Meteorological Centres Ahmedabad



OBSERVED AND FORECAST TRACK OF DEPRESSION OVER SOUTHEAST PAKISTAN BASED ON 1800 UTC (2330 IST) OF 09th SEP, 2025.



DATE/TIME IN UTC
IST=UTC + 0530
L: LOW PRESSURE AREA
WML: WELL MARKED LOW PRESSURE AREA
D: DEPRESSION (17-27 KT)
DD: DEEP DEPRESSION (28-33 KT)
CS: CYCLONIC STORM (34-47 KT)
SCS: SEVERE CYCLONIC STORM (48-63KT)
VSCS: VERY SEVERE CYCLONIC STORM (64-89 KT)
ESCS: EXTREMELY SEVERE CYCLONIC STORM (90-119 KT)
SuCS: SUPER CYCLONIC STORM (\geq 120 KT)

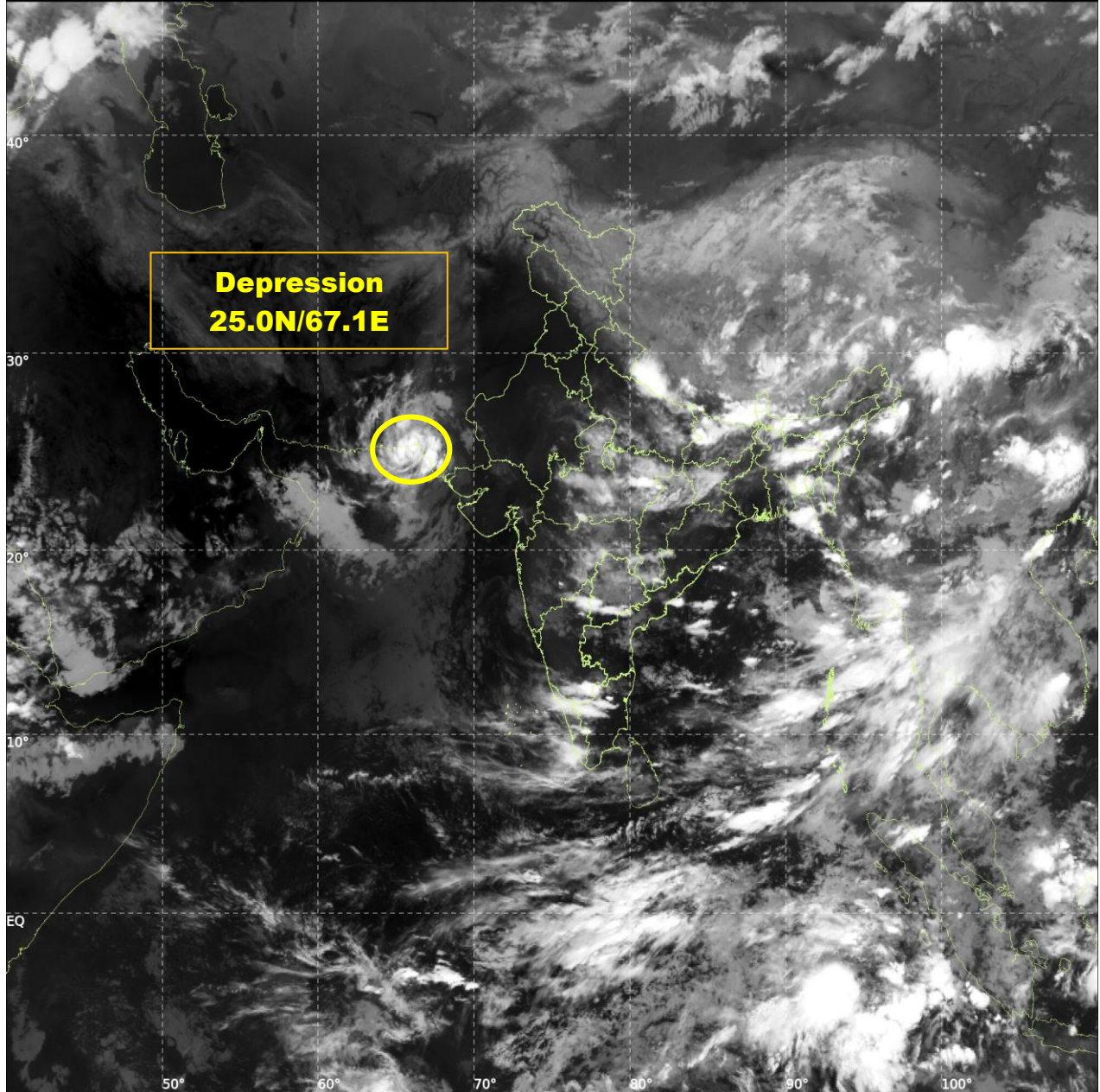
- LESS THAN 34 KT
- 34-47 KT
- \geq 48 KT
- OBSERVED TRACK
- FORECAST TRACK
- CONE OF UNCERTAINTY



INSAT-3DS IMG, Thermal Infrared1 Count @ 10.83 μm
GMT:09-09-2025/(2000-2027) IST:10-09-2025/(0130-0157)
LIC MERCATOR (LINEAR STRETCH: 1%)

504

912



Fishermen Warning Graphics

