



**India Meteorological Department  
(Ministry of Earth Sciences)**

**National Bulletin No. 14 (BOB/08/2025)**

**TIME OF ISSUE: 1230 HOURS IST**

**DATED: 27.11.2025**

**FROM: INDIA METEOROLOGICAL DEPARTMENT (FAX NO. 24643965/24699216/24623220)**

**TO: CONTROL ROOM, NDM, MINISTRY OF HOME AFFAIRS (FAX.NO. 23093750)**

**CONTROL ROOM NDMA (FAX.NO. 26701729)**

**CABINET SECRETARIAT (FAX.NO.23012284, 23018638)**

**PS TO HON'BLE MINISTER FOR S & T AND EARTH SCIENCES (FAX NO.23316745)**

**SECRETARY, MOES (FAX NO. 24629777)**

**H.Q. (INTEGRATED DEFENCE STAFF AND CDS) (FAX NO. 23005137/23005147)**

**DIRECTOR GENERAL, DOORDARSHAN (23385843)**

**DIRECTOR GENERAL, AIR (23421105, 23421219)**

**PIB MOES (FAX NO. 23389042)**

**UNI (FAX NO. 23355841)**

**D.G. NATIONAL DISASTER RESPONSE FORCE (NDRF) (FAX NO. 26105912, 2436 3260)**

**DIRECTOR, PUNCTUALITY, INDIAN RAILWAYS (FAX NO. 23388503)**

**CHIEF SECRETARY, ODISHA (FAX NO. 0674-2536660)**

**CHIEF SECRETARY, WEST BENGAL (FAX NO. 033-22144328)**

**CHIEF SECRETARY, ANDAMAN & NICOBAR ISLANDS (FAX NO. 03192-232656)**

**CHIEF SECRETARY, TAMIL NADU (FAX NO. 044-25672304)**

**CHIEF SECRETARY, ANDHRA PRADESH (FAX NO. 0863-2441029)**

**CHIEF SECRETARY, PUDUCHERRY (FAX NO. 0413-2334145)**

**CHIEF SECRETARY, KERALA (FAX NO. 0471-2327176)**

**CHIEF SECRETARY, LAKSHADWEEP (FAX NO. 048-96268124)**

**Subject: (A) Deep Depression over southwest Bay of Bengal and adjoining Sri Lanka Coast: Pre-Cyclone Watch for north Tamil Nadu & Puducherry and adjoining south Andhra Pradesh coasts (Yellow Message) and (B) Deep Depression [Remnant of Cyclonic Storm "Senyar"] over the Strait of Malacca**

**(A) Deep Depression over southwest Bay of Bengal and adjoining Sri Lanka Coast**

The Deep Depression over southwest Bay of Bengal and adjoining Sri Lanka coast moved north-northwestwards with a speed of 17 kmph during past 6 hours, and lay centered at 0830 hrs IST of today, the 27<sup>th</sup> November 2025 over the same region near latitude 6.7°N and longitude 82.1°E, about 120 km south-southeast of Batticaloa (Sri Lanka), 130 km east-northeast of Hambantota (Sri Lanka), and, 640 km south-southeast of Puducherry (India) and 730 km south-southeast of Chennai (India).

It is very likely to continue to move nearly north-northwestwards across southwest Bay of Bengal & adjoining Sri Lanka and intensify further into a cyclonic storm during next 03 hours. Thereafter, it is very likely to continue to move north-northwestwards across southwest Bay of Bengal & adjoining Sri Lanka coast towards North Tamil Nadu, Puducherry and adjoining south Andhra Pradesh coasts during subsequent 48 hours.

Forecast track and intensity are given in Table below

Date/Time (IST)	Position (Lat. °N/ Long. °E)	Maximum Sustained Surface Wind Speed (Kmph)	Category Of Cyclonic Disturbance
27.11.25/0830	6.7/82.1	55-65 gusting to 75	Deep Depression
27.11.25/1130	7.0/81.9	60-70 gusting to 80	Deep Depression
27.11.25/1730	7.5/81.6	60-70 gusting to 80	Cyclonic Storm
27.11.25/2330	8.0/81.3	65-75 gusting to 75	Cyclonic Storm
28.11.25/0530	8.6/81.1	70-80 gusting to 90	Cyclonic Storm
28.11.25/1730	9.3/80.9	75-85 gusting to 95	Cyclonic Storm
29.11.25/0530	10.1/80.7	80-90 gusting to 100	Cyclonic Storm
29.11.25/1730	11.0/80.5	80-90 gusting to 100	Cyclonic Storm
30.11.25/0530	11.9/80.3	80-90 gusting to 100	Cyclonic Storm

### (B) Deep Depression [Remnant of Cyclonic Storm "Senyar"] over the Strait of Malacca

The Deep Depression [Remnant of Cyclonic Storm "Senyar"] over the Strait of Malacca moved nearly eastwards with a speed of 18 kmph in past 6 hours, and lay centred at 0830 hours IST of today, the 27<sup>th</sup> November 2025 near latitude 3.7°N and longitude 99.6°E over the same region, about 200 km south-southwest of George Town (Malaysia), 320 km east-southeast of Kuta Makmur (Indonesia), 820 km southeast of Nancowry (Nicobar Islands) and 960 km southeast of Car Nicobar (Nicobar Islands).

It is very likely to move nearly eastwards and weaken further into a Depression during next 6 hours.

Forecast track and intensity are given in Table below

Date/Time (IST)	Position (Lat. °N/ Long. °E)	Maximum Sustained Surface Wind Speed (Kmph)	Category Of Cyclonic Disturbance
27.11.25/0830	3.7/99.6	50-60 gusting to 70	Deep Depression
27.11.25/1130	3.7/99.8	45-55 gusting to 65	Depression
27.11.25/1730	3.7/100.4	40-50 gusting to 60	Depression

#### (i) Rainfall Warning:

- ❖ **Tamil Nadu & Puducherry:** Light to moderate rainfall at many places with **heavy rainfall** at isolated places during 27<sup>th</sup> November, 2025. The rainfall activity would increase thereafter and light to moderate rainfall at most places with **heavy to very heavy at many places & extremely heavy rainfall (>20 cm) at isolated places** on 28<sup>th</sup> and 29<sup>th</sup> November, 2025. Thereafter, it would gradually decrease with light to moderate rainfall at many places with **heavy to very heavy rainfall** at isolated places on 30<sup>th</sup> November, 2025.
- ❖ **Coastal Andhra Pradesh:** Light to moderate rainfall at many places with **heavy rainfall** at isolated places is very likely over south coastal Andhra Pradesh on 28<sup>th</sup> November. Thereafter, it is very likely to increase becoming light to moderate rainfall at most places with **heavy to very rainfall** at isolated places on 29<sup>th</sup> November and **heavy to very heavy at a few places & extremely heavy rainfall (>20 cm) at isolated places on 30<sup>th</sup> November**. It would then decrease gradually becoming light to moderate rainfall at many

places with **heavy to very heavy rainfall** at isolated places on 1<sup>st</sup> December and **heavy rainfall** at isolated places on 02<sup>nd</sup> December.

- ❖ **Rayalaseema:** Light to moderate rainfall at many places with **heavy rainfall** at isolated places is very likely on 28<sup>th</sup> November. Thereafter, it is very likely to increase becoming light to moderate rainfall at most places with **heavy to very rainfall** at isolated places on 29<sup>th</sup> November and **heavy to very heavy at a few places & extremely heavy rainfall (>20 cm) at isolated places on 30<sup>th</sup> November**. It would then decrease gradually becoming light to moderate rainfall at many places with **heavy rainfall** at isolated places on 1<sup>st</sup> December.
- ❖ **Kerala & Mahe:** Light to moderate rainfall at many places with **heavy rainfall** at isolated places is very likely during 27<sup>th</sup>-29<sup>th</sup> November.
- ❖ **Telangana:** Light to moderate rainfall at a few places with **heavy rainfall** at isolated places is very likely on 30<sup>th</sup> November and 01<sup>st</sup> December.

**(ii) Wind Warning:**

**(a) Southwest Bay of Bengal, Gulf of Mannar, Comorin area and along & off Tamil Nadu, Puducherry & Sri Lanka coasts**

Squally weather with wind speed reaching 55-65 gusting to 75 kmph is prevailing and likely to become Gale wind speed reaching 60-70 gusting to 80 kmph from afternoon of today, the 27<sup>th</sup> November and increase further becoming 70-80 kmph gusting to 90 kmph by 28<sup>th</sup> morning and 80-90 kmph gusting to 100 kmph by 29<sup>th</sup> morning till 30<sup>th</sup> November. Thereafter it is likely to decrease gradually on 01<sup>st</sup> December.

**(b) Adjoining Westcentral Bay of Bengal and along & off Andhra Pradesh coast:**

Squally weather with wind speed reaching 35-45 kmph gusting to 55 kmph is prevailing. It is very likely to increase becoming squally winds speed reaching 50-60 kmph gusting to 70 kmph from 28<sup>th</sup> evening and Gale wind speed reaching 60-70 kmph gusting to 80 kmph from 29<sup>th</sup> evening till 30<sup>th</sup> November. Thereafter it is likely to decrease gradually on 01<sup>st</sup> December.

**(c) Adjoining areas of Southeast Arabian Sea, Lakshadweep, Maldives and along & off Kerala coast:**

Squally weather with wind speed reaching 40-50 kmph gusting to 60 kmph likely to prevail during 27<sup>th</sup>-29<sup>th</sup> November.

**(d) adjoining Southeast Bay of Bengal:**

Squally weather with wind speed reaching 35-45 gusting to 55 kmph is very likely till 28<sup>th</sup> November.

**(e) Strait of Malacca, Malaysia and adjoining areas of South Andaman Sea, along & off Nicobar Islands, Indonesia, and Thailand:**

Squally winds speed reaching 55-65 gusting to 75 kmph is prevailing and likely to decrease gradually becoming 45-55 gusting to 64 kmph by evening of today, the 27<sup>th</sup> November.

**(f) Adjoining areas of North Andaman Sea**

Squally weather with wind speed reaching 35-45 gusting to 55 kmph is very likely to prevail on 27<sup>th</sup> November.

**(iii) Sea Condition:**

**(a) Southwest Bay of Bengal, Gulf of Mannar, Comorin area and along & off Tamil Nadu, Puducherry & Sri Lanka coasts**

Rough to very rough sea conditions are prevailing and likely to become very rough to High from afternoon of today, the 27<sup>th</sup> November till 30<sup>th</sup> November. Thereafter it is likely to improve gradually on 01<sup>st</sup> December.

**(b) Adjoining Westcentral Bay of Bengal and along & off Andhra Pradesh coast:**

Rough sea conditions are prevailing. It is very likely to become rough to very rough from 28<sup>th</sup> evening and very rough to High from 29<sup>th</sup> evening till 30<sup>th</sup> November. Thereafter it is likely to improve gradually on 01<sup>st</sup> December.

**(c) Adjoining areas of Southeast Arabian Sea, Lakshadweep, Maldives and along & off Kerala coast:**

Rough to very rough sea conditions are likely to prevail during 27<sup>th</sup>-29<sup>th</sup> November.

**(d) adjoining Southeast Bay of Bengal:**

Rough sea conditions are very likely to prevail till 28<sup>th</sup> November.

**(e) Strait of Malacca, Malaysia and adjoining areas of South Andaman Sea, along & off Nicobar Islands, Indonesia, and Thailand:**

Very rough to rough sea conditions are prevailing and likely to become rough sea conditions by evening of today, the 27<sup>th</sup> November.

**(f) Adjoining areas of North Andaman Sea**

Rough sea conditions are very likely to prevail on 27<sup>th</sup> November.

**(iv) Fishermen Warning:**

(a) Total suspension of fishing operations in coastal areas of Sri Lanka, Tamil Nadu, Puducherry and south Andhra Pradesh coasts till 01<sup>st</sup> December.

**(b) Fishermen are advised not to venture into**

(i) Southwest Bay of Bengal, Gulf of Mannar, Comorin area and along & off Tamil Nadu, Puducherry & Sri Lanka coasts till 01<sup>st</sup> December.

(ii) Adjoining areas of Southeast Arabian Sea, Lakshadweep, Maldives and along & off Kerala coast till 30<sup>th</sup> November.

(iii) Southeast Bay of Bengal till 28<sup>th</sup> November.

(iv) Adjoining areas of westcentral Bay of Bengal and along & off Andhra Pradesh coast from 27<sup>th</sup> to 30<sup>th</sup> November

(v) Indonesia & Malaysia, Strait of Malacca, and adjoining areas of South Andaman Sea, along & off Nicobar Islands, and Thailand till 28<sup>th</sup> November.

(c) Those out at sea should avoid southwest Bay of Bengal, Gulf of Mannar, Comorin area and along & off Tamil Nadu, Puducherry & Sri Lanka coasts; adjoining westcentral Bay of Bengal till 01<sup>st</sup> December and Southeast Arabian Sea, Lakshadweep, Maldives and along & off Kerala coast till 30<sup>th</sup> November.

(d) The fishermen along & off South Andhra Pradesh coast should return to coast.

**(v) Impact Expected and Action Suggested due to heavy rain and strong winds (Tamil Nadu, Puducherry and south Andhra Pradesh)**

**Impact Expected**

- ❖ Major damage to thatched houses/ huts. Roof tops may blow off. Unattached metal sheets may fly.
- ❖ Damage to power and communication lines.
- ❖ Major damage to Kutcha and some damage to Pucca roads. Flooding of escape routes.
- ❖ Breaking of tree branches, uprooting of large avenue trees. Large-scale damage to banana and papaya trees. Large dead limbs blown from trees.
- ❖ Damage to paddy crops, horticultural and standing crops and orchards due to inundation & winds.
- ❖ Inundation of low-lying areas in coastal districts due to heavy rainfall and flash flood
- ❖ Localized Flooding of roads, water logging in low lying areas and closure of underpasses mainly in urban areas.
- ❖ Occasional reduction in visibility due to heavy rainfall.
- ❖ Disruption of traffic due to water logging and squally winds
- ❖ Localized Landslides/Mudslides It may lead to riverine flooding in some river catchments (for riverine flooding please visit Web page of CWC)
- ❖ Damage to embankments/ salt pans.
- ❖ Possibility of coastal flooding and coastal erosion is also very likely over coastal districts of Tamil Nadu and Puducherry and south Andhra Pradesh & Yanam.

**Action suggested:**

- ❖ Total suspension of fishing operations.
- ❖ Coastal hutment dwellers to be moved to safer places. People in affected areas to remain indoors.
- ❖ Movement in motor boats unsafe.
- ❖ Judicious regulation of offshore/onshore operations
- ❖ People are advised to keep a watch on the weather for worsening conditions and be ready to move to safer places accordingly.
- ❖ Take safe shelters; do not take shelter under trees, as there could be lightning.
- ❖ In case of expected lightning, unplug electrical/ electronic appliances, immediately, get out of water bodies and keep away from all the objects that conduct electricity.
- ❖ Tourism and recreational activities to be regulated.
- ❖ Surface transport and helicopter services to be regulated.

**Next bulletin will be issued at 1430 hours IST of today, the 27<sup>th</sup> November, 2025.**

**(Shashi Kant)**  
**Scientist-D, IMD, New Delhi**

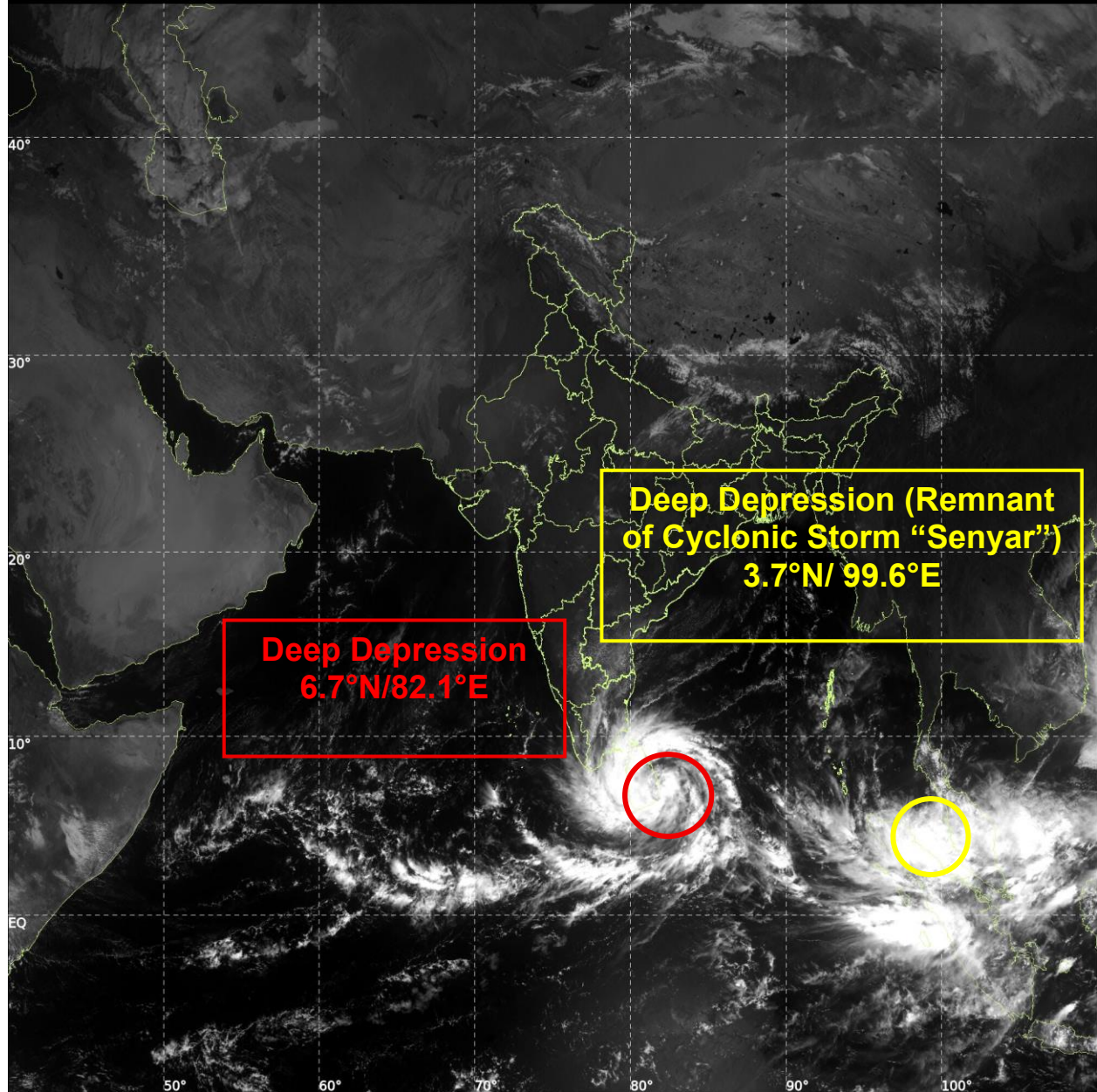
*Copy to: ACWC Kolkata/ACWC Chennai/CWC Bhubaneswar/CWC Vishakhapatnam/CWC Thiruvananthapuram/  
Meteorological Centre Vijay Puram/ and Meteorological Centre Amaravati*



INSAT-3DS IMG, Visible Count @ 0.65  $\mu\text{m}$   
GMT:27-11-2025/(0600-0627) IST:27-11-2025/(1130-1157)  
L1C MERCATOR (LINEAR STRETCH: 0.5%)

64

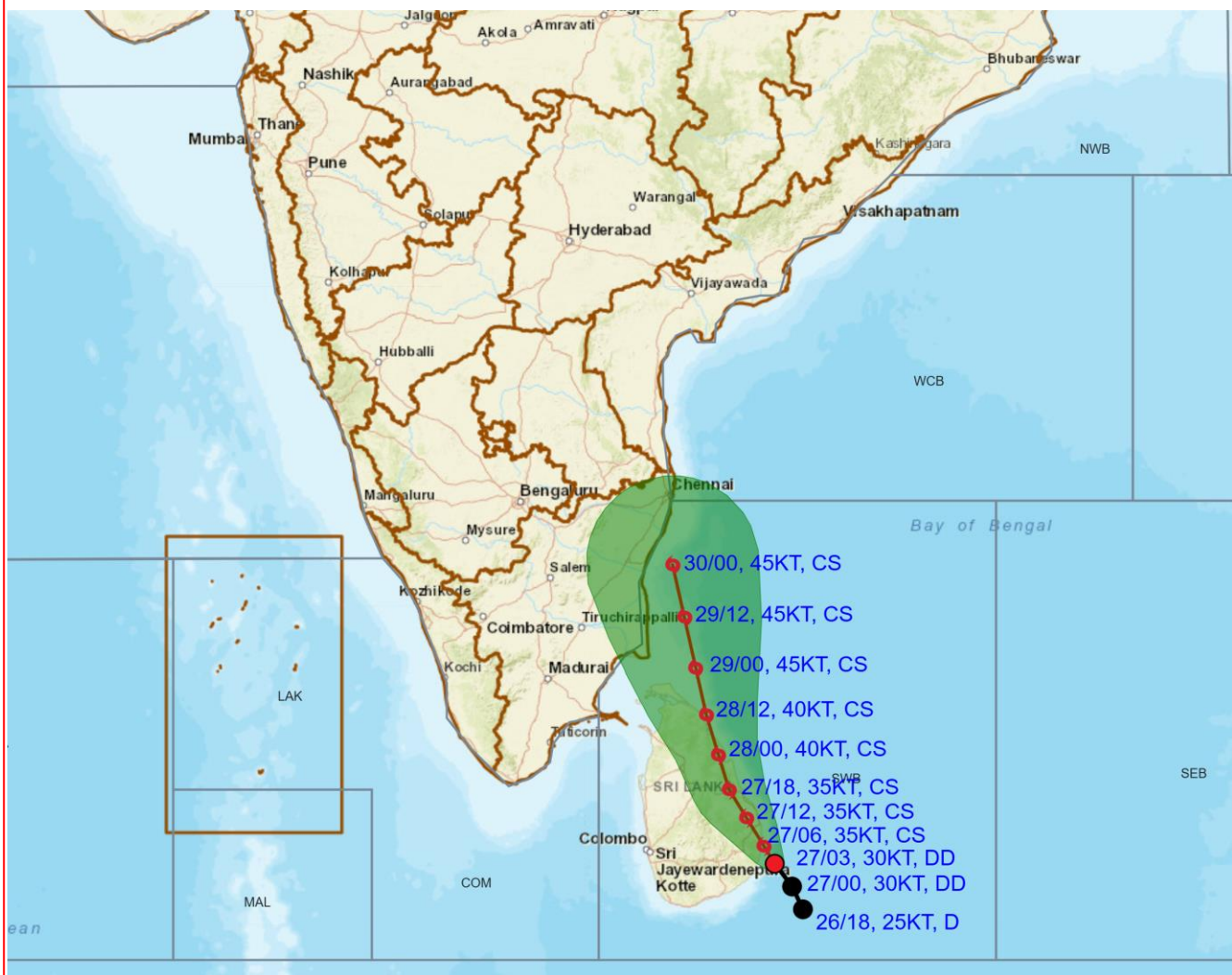
414







# OBSERVED AND FORECAST TRACK OF DEEP DEPRESSION OVER SOUTHWEST BAY OF BENGAL AND ADJOINING SRI LANKA BASED ON 0300 UTC (0830 Hrs. IST) OF 27<sup>TH</sup> NOVEMBER 2025



DATE/TIME IN UTC

IST=UTC + 0530

L: LOW PRESSURE AREA

WML: WELL MARKED LOW PRESSURE AREA

D: DEPRESSION (17-27 KT)

DD: DEEP DEPRESSION (28-33 KT)

CS: CYCLONIC STORM (34-47 KT)

SCS: SEVERE CYCLONIC STORM (48-63KT)

VSCS: VERY SEVERE CYCLONIC STORM (64-89 KT)

ESCS: EXTREMELY SEVERE CYCLONIC STORM (90-119 KT)

SuCS: SUPER CYCLONIC STORM ( $\geq 120$  KT)

● LESS THAN 34 KT

○ 34-47 KT

⦿  $\geq 48$  KT

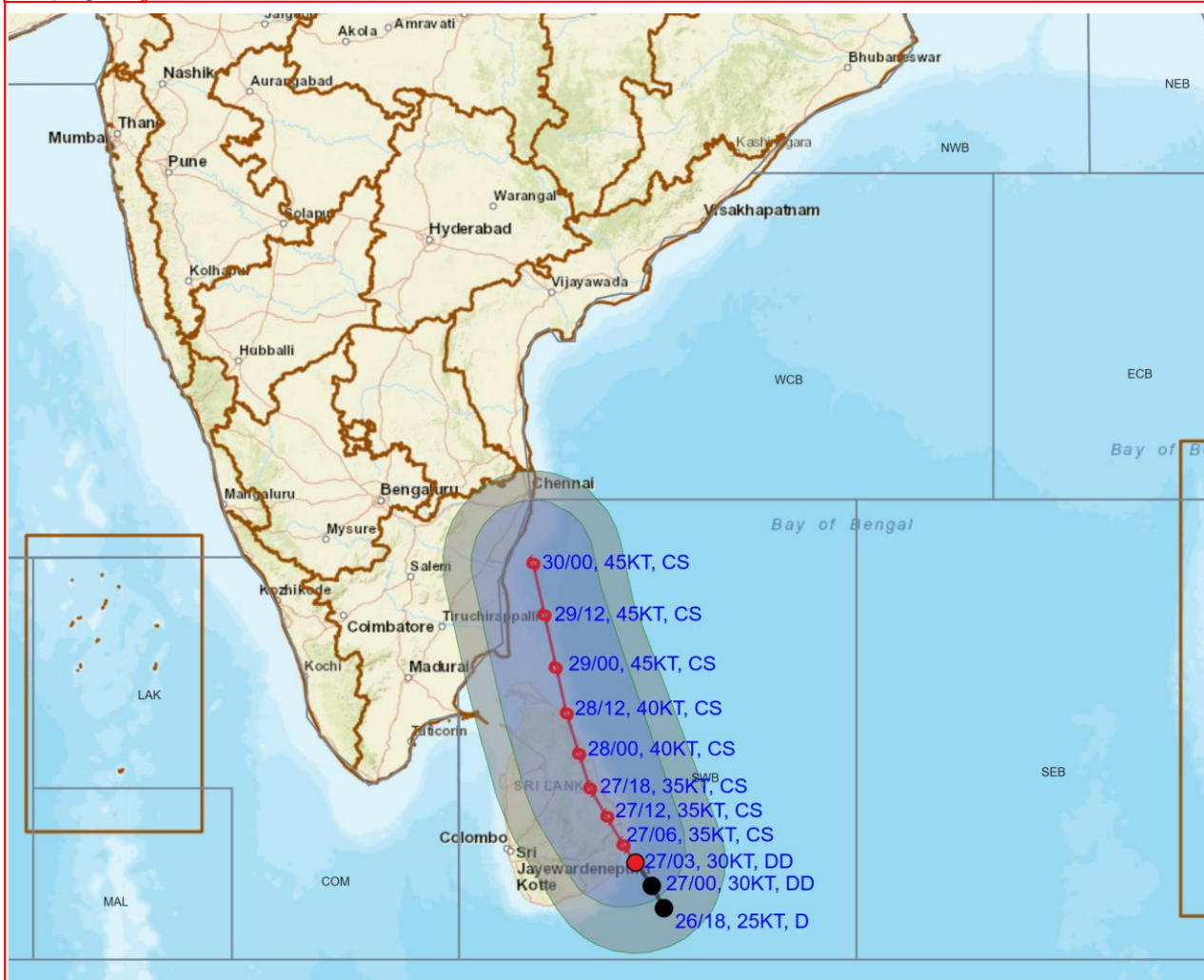
— OBSERVED TRACK

— FORECAST TRACK

▲ CONE OF UNCERTAINTY



# **OBSERVED AND FORECAST TRACK ALONGWITH QUADRANT WIND DISTRIBUTION OF DEEP DEPRESSION OVER SOUTHWEST BAY OF BENGAL AND ADJOINING SRI LANKA BASED ON 0300 UTC (0830 Hrs. IST) OF 27TH NOVEMBER 2025**



DATE/TIME IN UTC

IST=UTC + 0530

L: LOW PRESSURE AREA

WML: WELL MARKED LOW PRESSURE AREA

D: DEPRESSION (17-27 KT)

DD: DEEP DEPRESSION (28-33 KT)

CS: CYCLONIC STORM (34-47 KT)

SCS: SEVERE CYCLONIC STORM (48-63KT)

VSCS: VERY SEVERE CYCLONIC STORM (64-89 KT)

ESCS: EXTREMELY SEVERE CYCLONIC STORM (90-119 KT)

SuCS: SUPER CYCLONIC STORM (≥ 120 KT)

● LESS THAN 34 KT

○ 34-47 KT

● ≥ 48 KT

— OBSERVED TRACK

— FORECAST TRACK

▲ CONE OF UNCERTAINTY

AREA OF MAXIMUM SUSTAINED WIND SPEED:

■ 28-33 KT (52-61 KMPH)

■ 34-49 KT (62-91 KMPH)

■ 50-63 KT (92-117 KMPH)

■ ≥ 64 KT (≥118 KMPH)

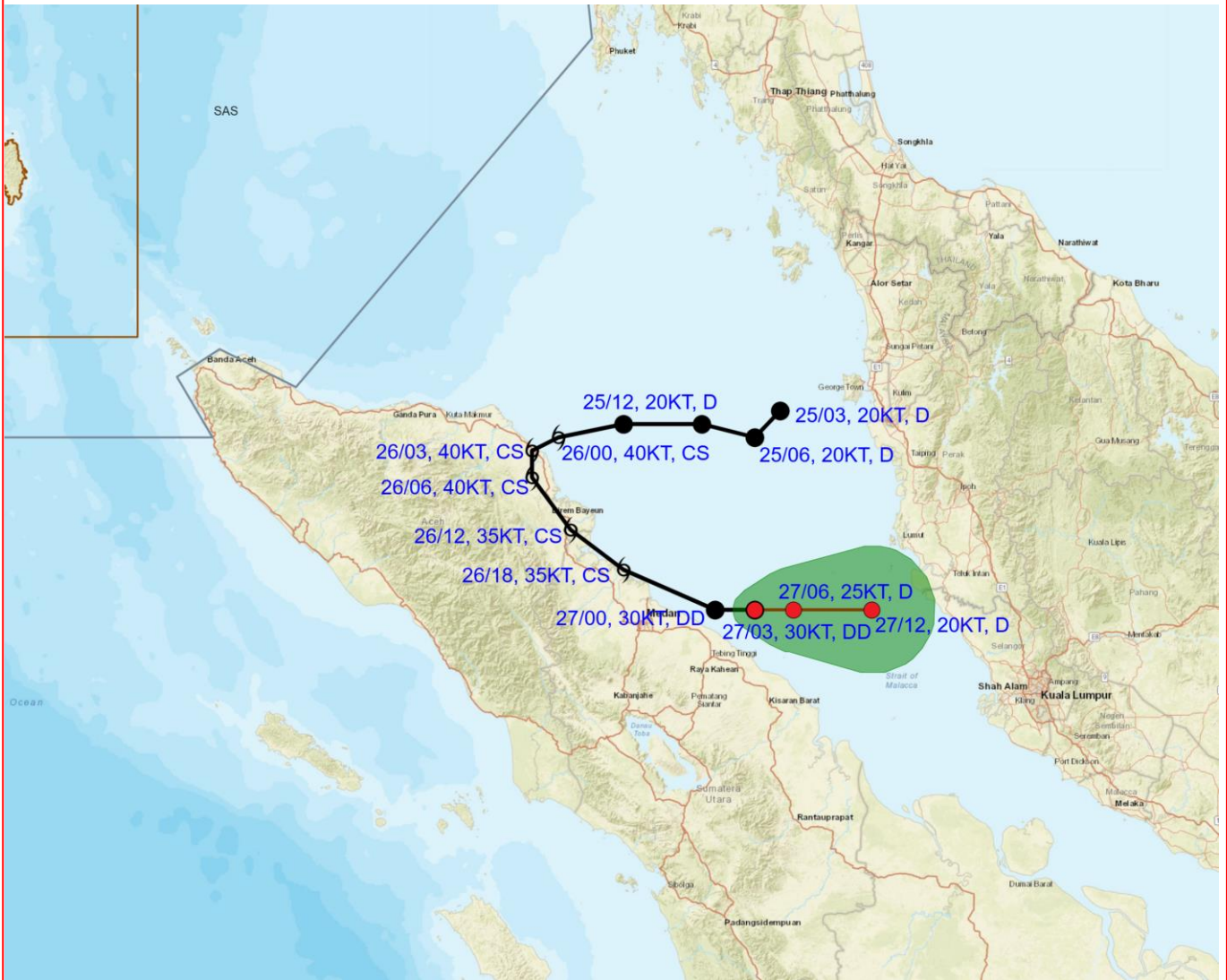
## **IMPACT OVER THE SEA**

MSW (knot/kmph)	Impact	Action
28-33 (52-61)	Very rough seas	Total suspension of fishing operations
34-49 (62-91)	High to very high seas	Total suspension of fishing operations
50-63 (92-117)	Very high seas	Total suspension of fishing operations
≥ 64 (≥118)	Phenomenal	Total suspension of fishing operations





# OBSERVED AND FORECAST TRACK OF DEEP DEPRESSION (REMANANT OF CYCLONIC STORM “SENYAR”) OVER STRAIT OF MALACCA BASED ON 0300 UTC (0830 Hrs. IST) OF 27<sup>TH</sup> NOVEMBER 2025

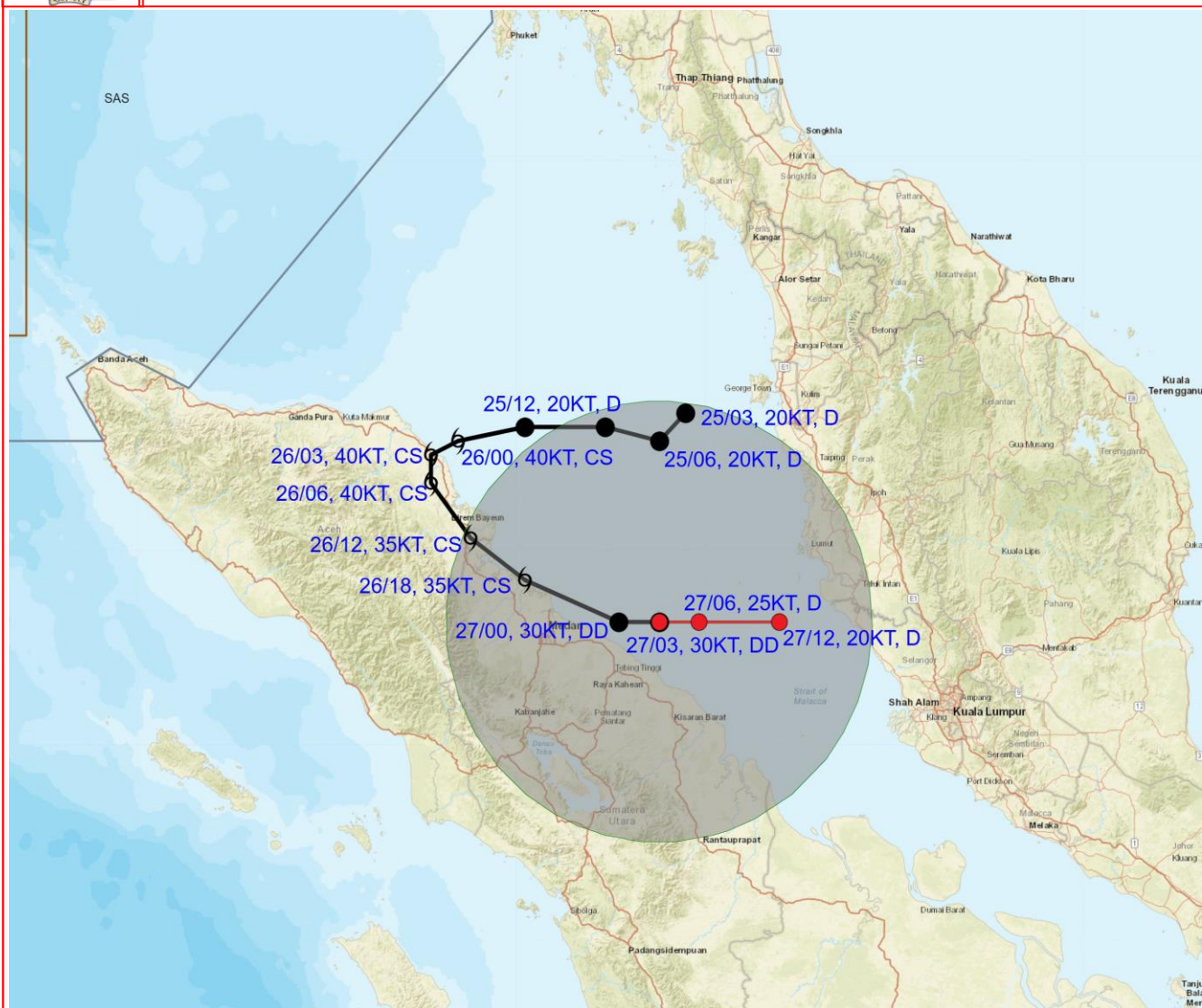


DATE/TIME IN UTC  
IST=UTC + 0530  
L: LOW PRESSURE AREA  
WML: WELL MARKED LOW PRESSURE AREA  
D: DEPRESSION (17-27 KT)  
DD: DEEP DEPRESSION (28-33 KT)  
CS: CYCLONIC STORM (34-47 KT)  
SCS: SEVERE CYCLONIC STORM (48-63KT)  
VSCS: VERY SEVERE CYCLONIC STORM (64-89 KT)  
ESCS: EXTREMELY SEVERE CYCLONIC STORM (90-119 KT)  
SuCS: SUPER CYCLONIC STORM ( $\geq 120$  KT)

● LESS THAN 34 KT  
● 34-47 KT  
●  $\geq 48$  KT  
— OBSERVED TRACK  
— FORECAST TRACK  
▲ CONE OF UNCERTAINTY



**OBSERVED AND FORECAST TRACK ALONGWITH QUADRANT WIND DISTRIBUTION TRACK OF DEEP DEPRESSION (REMANANT OF CYCLONIC STORM “SENYAR”) OVER STRAIT OF MALACCA BASED ON 0300 UTC (0830 Hrs. IST) OF 27TH NOVEMBER 2025**



DATE/TIME IN UTC

IST=UTC + 0530

L: LOW PRESSURE AREA

WML: WELL MARKED LOW PRESSURE AREA

D: DEPRESSION (17-27 KT)

DD: DEEP DEPRESSION (28-33 KT)

CS: CYCLONIC STORM (34-47 KT)

SCS: SEVERE CYCLONIC STORM (48-63KT)

VSCS: VERY SEVERE CYCLONIC STORM (64-89 KT)

ESCS: EXTREMELY SEVERE CYCLONIC STORM (90-119 KT)

SuCS: SUPER CYCLONIC STORM (≥ 120 KT)

● LESS THAN 34 KT

○ 34-47 KT

● ≥ 48 KT

— OBSERVED TRACK

— FORECAST TRACK

— CONE OF UNCERTAINTY

AREA OF MAXIMUM SUSTAINED WIND SPEED:

— 28-33 KT (52-61 KMPH)

— 34-49 KT (62-91 KMPH)

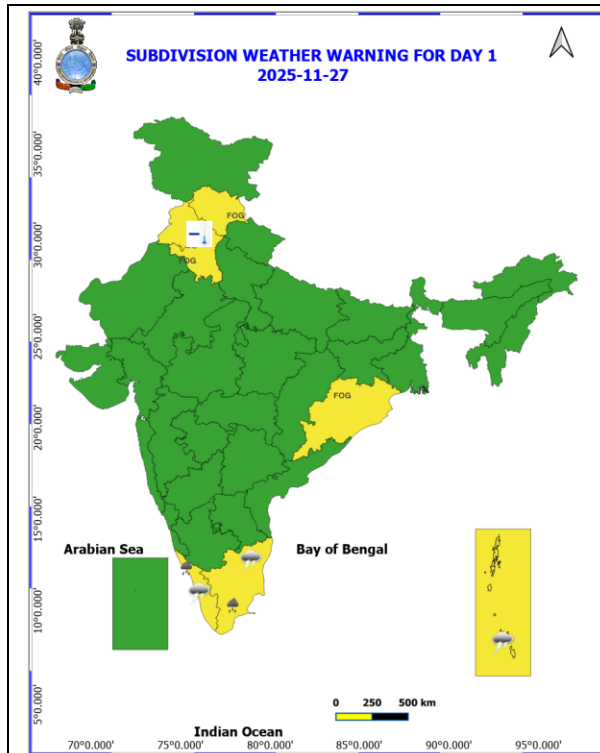
— 50-63 KT (92-117 KMPH)

— ≥ 64 KT (≥118 KMPH)

**IMPACT OVER THE SEA**

MSW (knot/kmph)	Impact	Action
28-33 (52-61)	Very rough seas	Total suspension of fishing operations
34-49 (62-91)	High to very high seas	Total suspension of fishing operations
50-63 (92-117)	Very high seas	Total suspension of fishing operations
≥ 64 (≥118)	Phenomenal	Total suspension of fishing operations

## WEATHER WARNING GRAPHICS

 **Heavy Rain** **Very Heavy Rain**

 **Extremely Heavy Rain**

**COLOUR CODED WARNING**

**No Warning (No Action)**

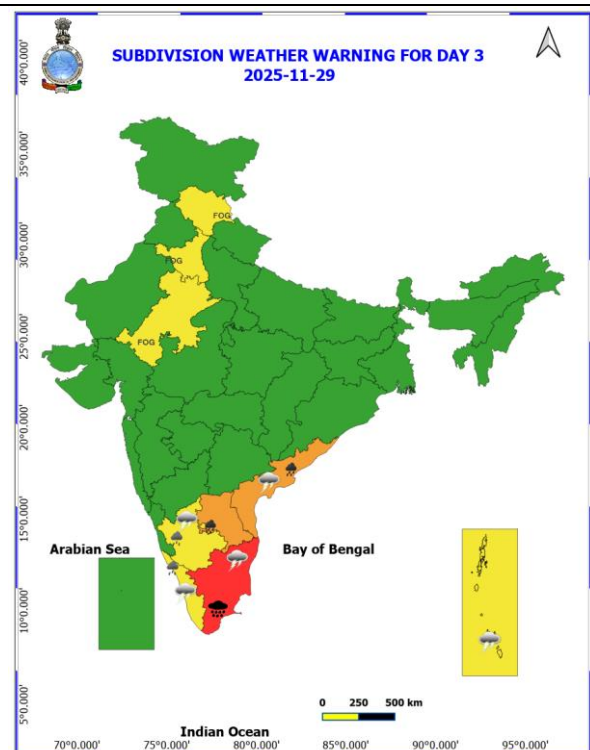
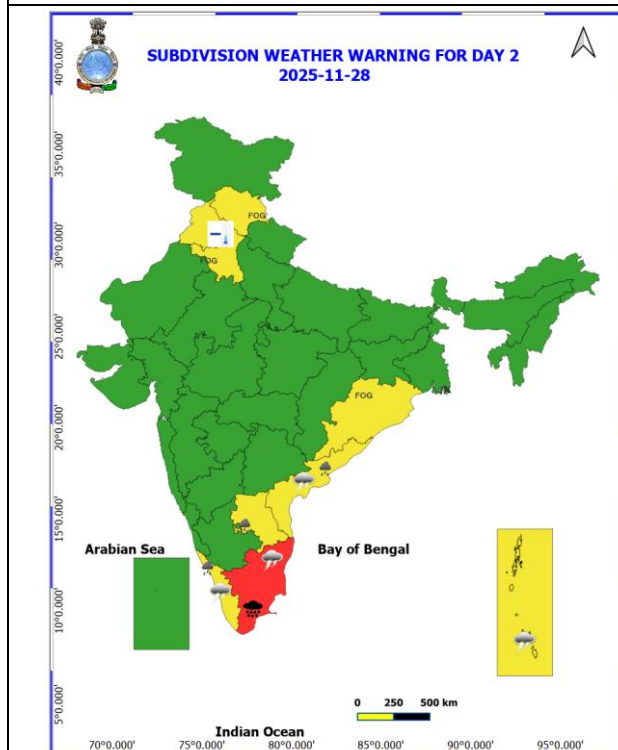
### Watch (Be Aware)

**Alert (Be Prepared To Take Action)**

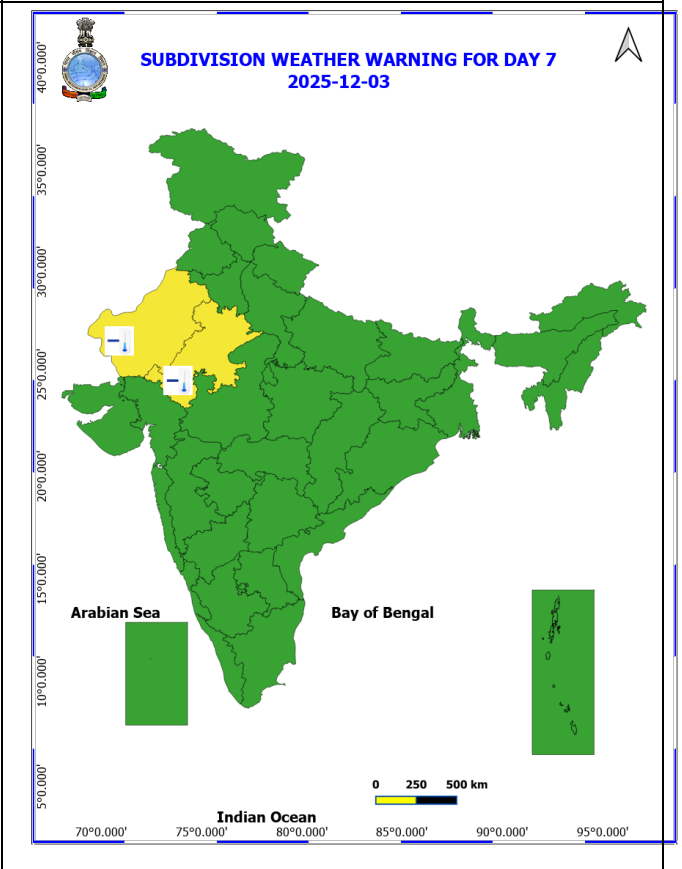
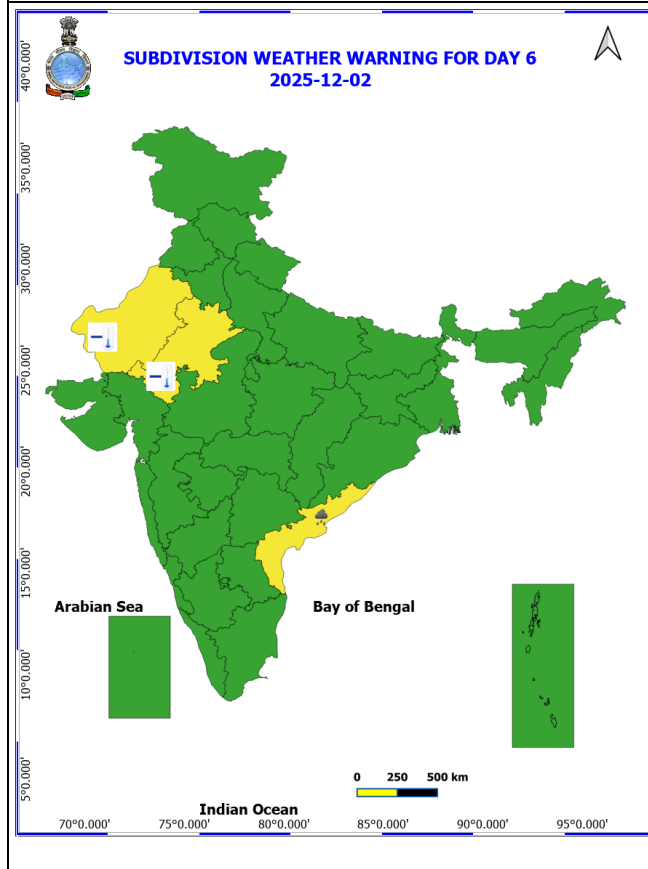
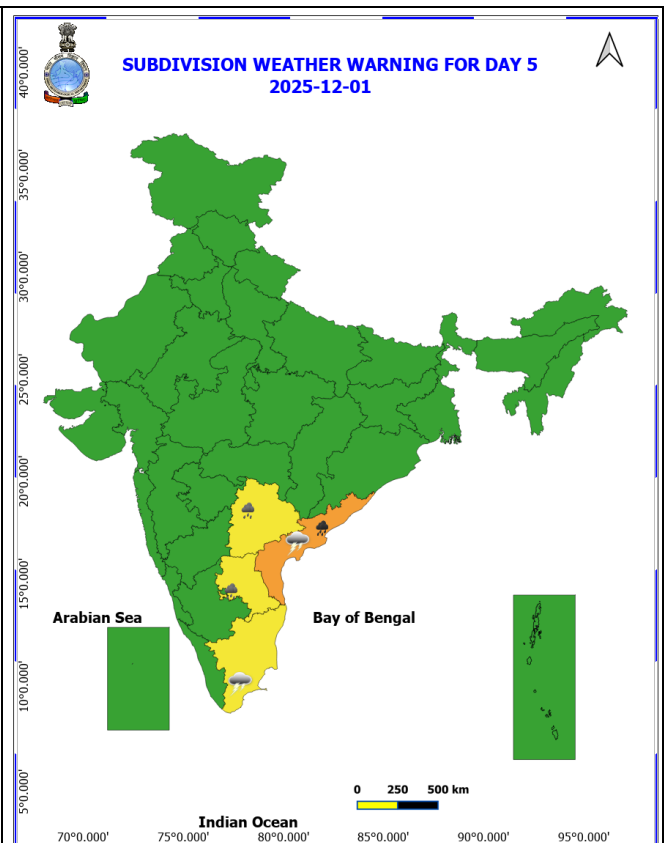
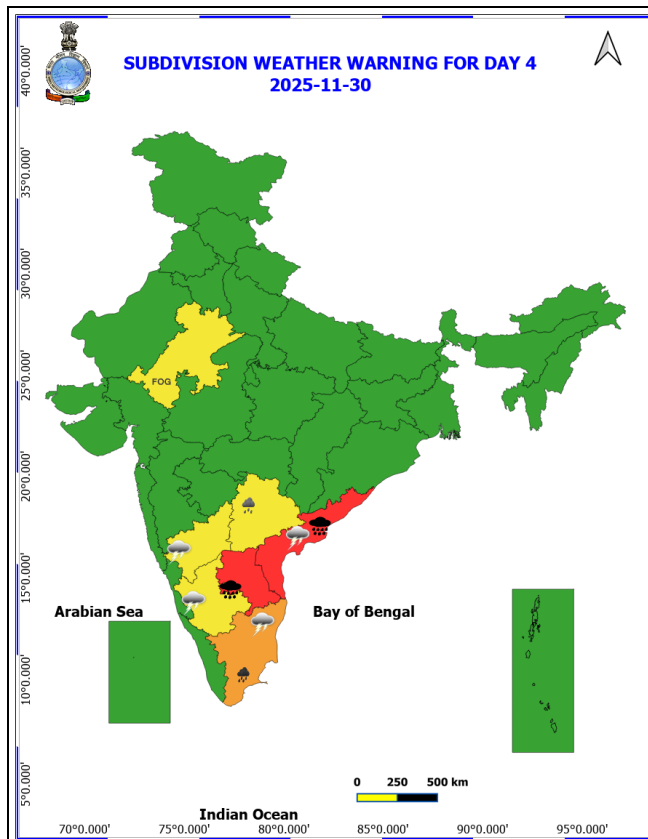
**Warning (Take Action)**

### Probabilistic Forecast

Terms	Probability of Occurrence (%)
Unlikely	< 25
Likely	25 - 50
Very Likely	50 - 75
Most Likely	> 75

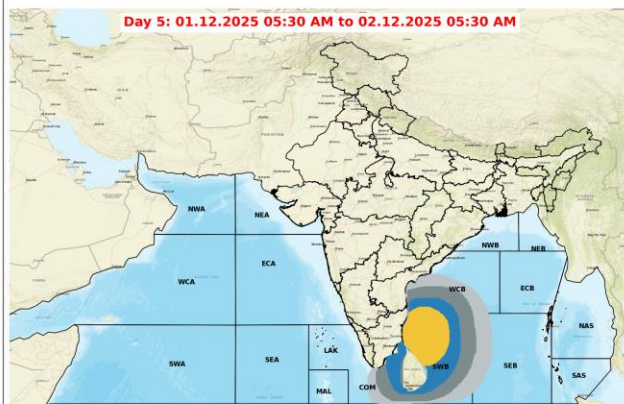
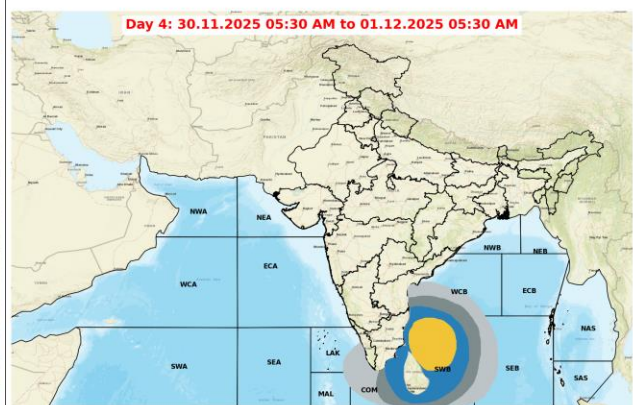
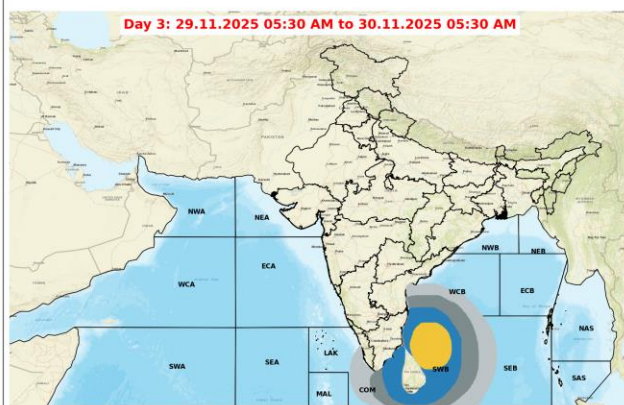
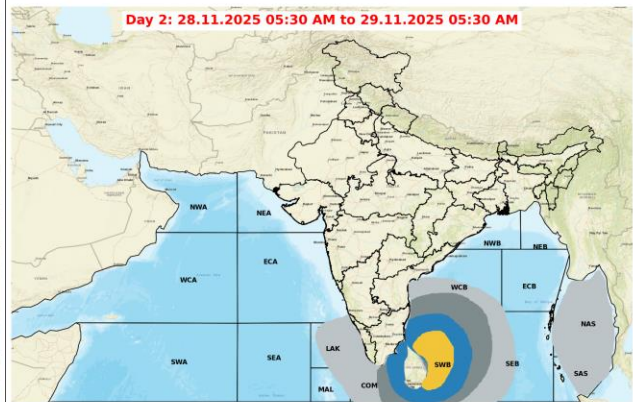
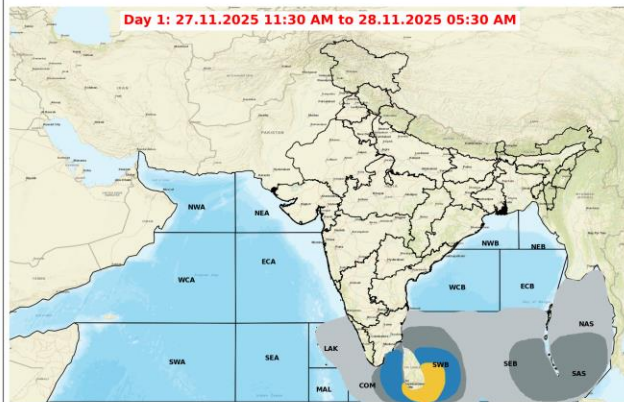






- Action may be taken based on **ORANGE AND RED** COLOUR warnings.
- Vulnerable regions likely urban and hilly areas action may be initiated for heavy rainfall warning.
- As the lead period increases forecast accuracy decreases.

## Fishermen Warning Graphics



### Legend

- |   |   |
|---|---|
| Squally Weather with wind speed 35-45 kmph gusting to 55 kmph | Squally wind with speed 55-65 kmph gusting to 75 kmph       |
| Squally Weather with wind speed 40-50 kmph gusting to 60 kmph | CS with Gale winds with speed 60-80 kmph gusting to 90 kmph |
| Squally Weather with wind speed 45-55 kmph gusting to 65 kmph | SCS with Gale wind speed 90-110 kmph gusting to 120 kmph    |
| Squally wind with speed 45-55 kmph gusting to 65 kmph         | VSCS with Gale wind speed 120-165 kmph gusting to 185 kmph  |
| Squally wind with speed 50-60 kmph gusting to 70 kmph         | ESCS with Gale wind speed 165-220 kmph gusting to 245 kmph  |

Fishermen are advised not to venture into the marked areas.