



**India Meteorological Department
(Ministry of Earth Sciences)**

NATIONAL BULLETIN NO. 17 (BOB/10/2022)

TIME OF ISSUE: 1430 HOURS IST

DATED: 25.12.2022

FROM: INDIA METEOROLOGICAL DEPARTMENT (FAX NO. 24643965/24699216/24623220)

TO: CONTROL ROOM, NDM, MINISTRY OF HOME AFFAIRS (FAX.NO. 23093750)

CONTROL ROOM NDMA (FAX.NO. 26701729)

CABINET SECRETARIAT (FAX.NO.23012284, 23018638)

PS TO HON'BLE MINISTER FOR S & T AND EARTH SCIENCES (FAX NO.23316745)

SECRETARY, MOES (FAX NO. 24629777)

H.Q. (INTEGRATED DEFENCE STAFF AND CDS) (FAX NO. 23005137/23005147)

DIRECTOR GENERAL, DOORDARSHAN (23385843)

DIRECTOR GENERAL, AIR (23421105, 23421219)

PIB MOES (FAX NO. 23389042)

UNI (FAX NO. 23355841)

D.G. NATIONAL DISASTER RESPONSE FORCE (NDRF) (FAX NO. 26105912, 2436 3260)

DIRECTOR, PUNCTUALITY, INDIAN RAILWAYS (FAX NO. 23388503)

CHIEF SECRETARY, TAMIL NADU (FAX NO 044-25672304)

CHIEF SECRETARY, ANDHRA PRADESH (FAX NO. 0863-2441029, 08645-246600)

CHIEF SECRETARY, PUDUCHERRY (FAX NO 0413-2334145)

ADMINISTRATOR, ANDAMAN & NICOBAR ISLANDS (FAX NO. 03192- 232656)

CHIEF SECRETARY, KARNATAKA (FAX NO. 080-22258913)

CHIEF SECRETARY, KERALA (FAX NO. 0471-2327176)

ADMINISTRATOR, LAKSHADWEEP ISLANDS (FAX NO. 0413-262184)

Sub: Depression over Southwest Bay of Bengal close to Sri Lanka coast

The Depression over Southwest Bay of Bengal and adjoining Sri Lanka coast moved west-southwestwards with a speed of 14 kmph during past 06 hours and lay centered at 1130 hours IST of 25th December over Southwest Bay of Bengal close to Sri Lanka coast near latitude 8.5°N and longitude 81.6°E about 40 km east-southeast of Trincomalee (Sri Lanka), 90 km north-northeast of Batticaloa (Sri Lanka), 140 km south-southeast of Jaffna (Sri Lanka) and 310 km south-southeast of Nagappattinam (Tamil Nadu).

It is likely to continue to move west-southwestwards and cross Sri Lanka coast to the south of Trincomalee near about latitude 8.3°N and longitude 81.4°E within a few hours. Thereafter, it would move west-southwestwards, weaken gradually and emerge into Comorin Area & neighbourhood by tomorrow, the 26th December morning.

Warnings:

(i) Rainfall warning (Graphics enclosed)

- Light to moderate rainfall at many places with heavy rainfall at isolated places is likely over south coastal Tamil Nadu on 25th & 26th December 2022.
- Light to moderate rainfall at a few places with heavy rainfall at isolated places is likely over south Kerala on 26th December 2022.
- Light to moderate rainfall at many places with heavy rainfall at isolated places is likely over Lakshadweep Islands on 27th December 2022.

(ii) Wind warning (Graphics enclosed):

Southwest Bay of Bengal along & off Tamil Nadu and Sri Lanka coasts:

Squally wind speed reaching 45-55 kmph gusting to 65 kmph is likely to prevail till 26th morning and decrease thereafter.

Gulf of Mannar and Comorin Area along & off south Tamil Nadu & west Sri Lanka coasts:

Squally weather with wind speed reaching 45-55 kmph gusting to 65 kmph on 25th and 26th December.

Lakshadweep Islands & adjoining Southeast Arabian Sea:

Squally weather with wind speed reaching 40-50 kmph gusting to 60 kmph is likely to prevail on 27th December.

Southeast Arabian Sea & adjoining Lakshadweep Islands:

Squally weather with wind speed reaching 40-50 kmph gusting to 60 kmph is likely to prevail on 28th December.

Sea condition:

Southwest Bay of Bengal along & off Tamil Nadu and Sri Lanka coasts:

Sea condition is likely to be rough to very rough till 26th December morning and improve thereafter.

Gulf of Mannar and Comorin Area along & off south Tamil Nadu & west Sri Lanka coasts:

Sea condition is likely to be rough to very rough on 25th and 26th December.

Lakshadweep Islands & adjoining Southeast Arabian Sea:

Sea condition is likely to be rough to very rough on 27th December.

Southeast Arabian Sea & adjoining Lakshadweep Islands:

Sea condition is likely to be rough on 28th December.

Fishermen Warning (Graphics Enclosed):

Fishermen are advised not to venture into

- Southwest Bay of Bengal and along & off Sri Lanka coast till 25th December.
- Gulf of Mannar, Comorin Area and along & off south Tamil Nadu and west Sri Lanka coasts during 25th-26th December.
- Sea areas of Lakshadweep Islands & adjoining Southeast Arabian Sea on 27th December.
- Sea areas of Southeast Arabian Sea & adjoining Lakshadweep Islands on 28th December.

The System is being monitored continuously and next bulletin will be issued at 2030 hours IST of 25th December, 2022.

(M. Sharma)

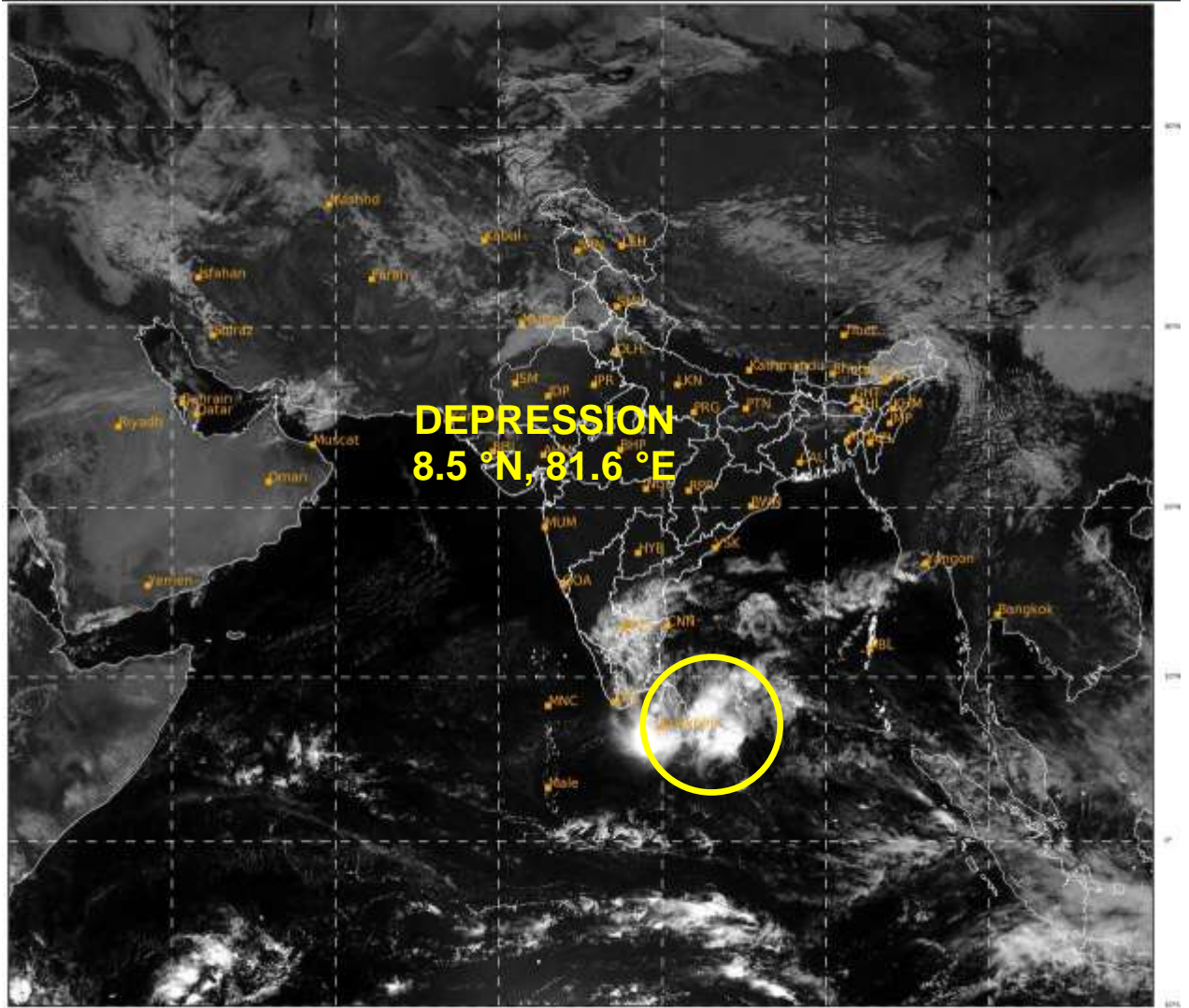
Scientist D, Cyclone Warning Division, New Delhi

Copy to: ACWC Mumbai & Chennai/ CWC Ahmedabad/ CWC Thiruvananthapuram/MC Goa

LEGEND: Heavy Rainfall: 64.5 to 115.5mm, **Very Heavy Rainfall:** 115.6 to 204.4mm **Most Places:** more than 76% of total stations, **Isolated Places:** Less than 25% of total

SAT : INSAT-3D IMG
Visible Count 0.65 um
LIC Mercator

25-12-2022/(0730 to 0756) GMT
23-12-2022/(1300 to 1326) IST



17

507

IMD, DELHI



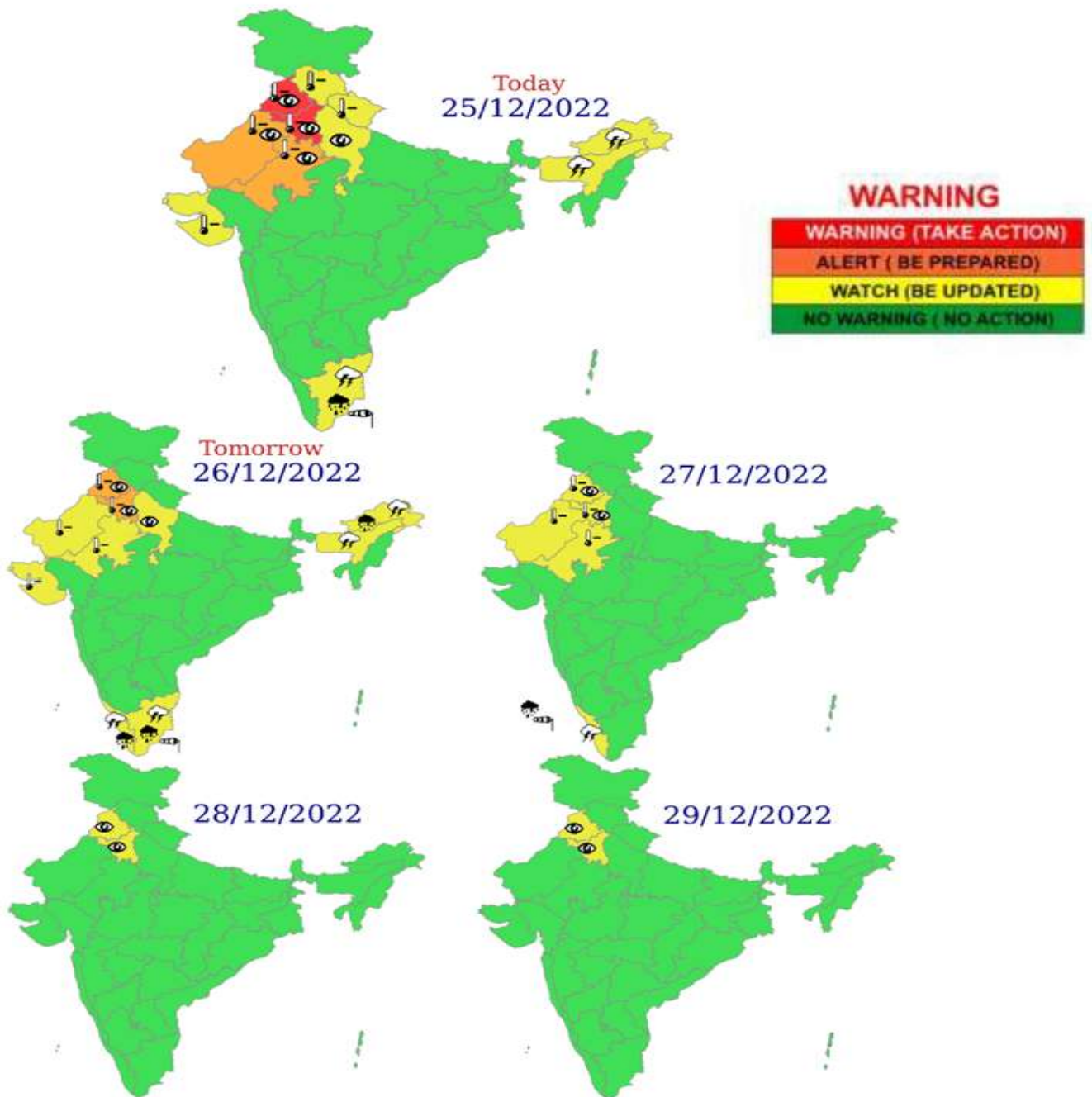
OBSERVED AND FORECAST TRACK OF DEPRESSION OVER SOUTHWEST BAY OF BENGAL CLOSE TO SRI LANKA COAST BASED ON 0600 UTC OF 25th DECEMBER, 2022



DATE/TIME IN UTC
 IST=UTC + 0530
L: LOW PRESSURE AREA
WML: WELL MARKED LOW PRESSURE AREA
D: DEPRESSION (17-27 KT)
DD: DEEP DEPRESSION (28-33 KT)
CS: CYCLONIC STORM (34-47 KT)
SCS: SEVERE CYCLONIC STORM (48-63KT)
VSCS: VERY SEVERE CYCLONIC STORM (64-89 KT)
ESCS: EXTREMELY SEVERE CYCLONIC STORM (90-119 KT)
SuCS: SUPER CYCLONIC STORM (≥ 120 KT)

- LESS THAN 34 KT
- 34-47 KT
- ≥ 48 KT
- OBSERVED TRACK
- FORECAST TRACK
- CONE OF UNCERTAINTY

WEATHER WARNING GRAPHICS



- | | | | |
|--|--|--|--|
|  Heavy Rain |  Heavy Snow |  Thunderstorm |  Dust Storm |
|  Strong Winds |  Visibility |  Cyclone |  Squall/ Hail |
|  Frost |  Cold Wave |  Heat Wave |  Sea State |

Fishermen warning graphics

Day 1: 25.12.2022/11:30AM to 26.12.2022/05:30AM



Day 2: 26.12.2022/05:30AM to 27.12.2022/05:30AM



Day 3: 27.12.2022/05:30AM to 28.12.2022/05:30AM



Day 4: 28.12.2022/05:30AM to 29.12.2022/05:30AM



Day 5: 29.12.2022/05:30AM to 30.12.2022/05:30AM



Squally WX with wind speed 40-50 kmph gusting to 60 kmph

Squally wind speed 45-55 kmph gusting to 65 kmph

Fishermen are advised not to venture into the marked areas.