



**India Meteorological Department
(Ministry of Earth Sciences)**

National Bulletin No. 13 (BOB/08/2025)

TIME OF ISSUE: 0945 HOURS IST

DATED: 27.11.2025

FROM: INDIA METEOROLOGICAL DEPARTMENT (FAX NO. 24643965/24699216/24623220)

TO: CONTROL ROOM, NDM, MINISTRY OF HOME AFFAIRS (FAX.NO. 23093750)

CONTROL ROOM NDMA (FAX.NO. 26701729)

CABINET SECRETARIAT (FAX.NO.23012284, 23018638)

PS TO HON'BLE MINISTER FOR S & T AND EARTH SCIENCES (FAX NO.23316745)

SECRETARY, MOES (FAX NO. 24629777)

H.Q. (INTEGRATED DEFENCE STAFF AND CDS) (FAX NO. 23005137/23005147)

DIRECTOR GENERAL, DOORDARSHAN (23385843)

DIRECTOR GENERAL, AIR (23421105, 23421219)

PIB MOES (FAX NO. 23389042)

UNI (FAX NO. 23355841)

D.G. NATIONAL DISASTER RESPONSE FORCE (NDRF) (FAX NO. 26105912, 2436 3260)

DIRECTOR, PUNCTUALITY, INDIAN RAILWAYS (FAX NO. 23388503)

CHIEF SECRETARY, ODISHA (FAX NO. 0674-2536660)

CHIEF SECRETARY, WEST BENGAL (FAX NO. 033-22144328)

CHIEF SECRETARY, ANDAMAN & NICOBAR ISLANDS (FAX NO. 03192-232656)

CHIEF SECRETARY, TAMIL NADU (FAX NO. 044-25672304)

CHIEF SECRETARY, ANDHRA PRADESH (FAX NO. 0863-2441029)

CHIEF SECRETARY, PUDUCHERRY (FAX NO. 0413-2334145)

CHIEF SECRETARY, KERALA (FAX NO. 0471-2327176)

CHIEF SECRETARY, LAKSHADWEEP (FAX NO. 048-96268124)

Subject: (A) Cyclonic Storm "Senyar" [Pronunciation: 'Sen-yar'] weakened into a deep depression over the Strait of Malacca

(B) Deep Depression over southwest Bay of Bengal and adjoining Sri Lanka Coast: Pre-Cyclone Watch for north Tamil Nadu & Puducherry and adjoining south Andhra Pradesh coasts (Yellow Message)

(A) Cyclonic Storm "Senyar" [Pronunciation: 'Sen-yar'] weakened into a deep depression over the Strait of Malacca

The cyclonic storm *Senyar" [Pronunciation: 'Sen-yar'] over coastal areas of Northeast Indonesia and adjoining strait of Malacca moved east-southeastwards with a speed of 13 kmph in past 6 hours, weakened into deep depression and lay centred at 0530 hours IST of today, the 27th November 2025 near latitude 3.7°N and longitude 99.2°E over the Strait of Malacca, about 280 km east-southeast of Kuta Makmur (Indonesia), 230 km south-southwest of George Town (Malaysia), 790 km southeast of Nancowry (Nicobar Islands) and 930 km southeast of Car Nicobar (Nicobar Islands).

It is very likely to move nearly eastwards and weaken further into a Depression by 27th afternoon/evening.

Forecast track and intensity are given in Table below

Date/Time (IST)	Position (Lat. °N/ Long. °E)	Maximum Sustained Surface Wind Speed (Kmph)	Category Of Cyclonic Disturbance
27.11.25/0530	3.7/99.2	50-60 gusting to 70	Deep Depression
27.11.25/1130	3.6/99.5	50-60 gusting to 70	Deep Depression
27.11.25/1730	3.5/99.8	45-55 gusting to 65	Depression

(B) Deep Depression over southwest Bay of Bengal and adjoining areas of Southeast Sri Lanka coast: Pre-Cyclone Watch for north Tamil Nadu & Puducherry and adjoining south Andhra Pradesh coasts (Yellow Message)

The Depression over southwest Bay of Bengal and adjoining Sri Lanka coast moved north-northwestwards with a speed of 8 kmph during past 6 hours, intensified into a deep depression and lay centered at 0530 hrs IST of today, the 27th November 2025 over the same region near latitude 6.3°N and longitude 82.4°E, about 150 km east of Hambantota (Sri Lanka) and 170 km south-southeast of Batticaloa (Sri Lanka).

It is very likely to continue to move nearly north-northwestwards across southwest Bay of Bengal & adjoining Sri Lanka and intensify further into a cyclonic storm during next 12 hours. Thereafter, it is very likely to continue to move north-northwestwards across southwest Bay of Bengal & adjoining Sri Lanka coast towards North Tamil Nadu, Puducherry and adjoining south Andhra Pradesh coast during subsequent 48 hours.

Forecast track and intensity are given in Table below

Date/Time (IST)	Position (Lat. °N/ Long. °E)	Maximum Sustained Surface Wind Speed (Kmph)	Category Of Cyclonic Disturbance
27.11.25/0530	6.3/82.4	50-60 gusting to 70	Deep Depression
27.11.25/1130	6.7/82.2	55-65 gusting to 75	Deep Depression
27.11.25/1730	7.1/82.0	60-70 gusting to 80	Cyclonic Storm
27.11.25/2330	7.4/81.8	65-75 gusting to 75	Cyclonic Storm
28.11.25/0530	7.8/81.6	70-80 gusting to 90	Cyclonic Storm
28.11.25/1730	8.5/81.2	75-85 gusting to 95	Cyclonic Storm
29.11.25/0530	9.4/80.9	80-90 gusting to 100	Cyclonic Storm
29.11.25/1730	10.5/80.6	80-90 gusting to 100	Cyclonic Storm
30.11.25/0530	11.7/80.4	80-90 gusting to 100	Cyclonic Storm

(i) Rainfall Warning:

❖ Andaman & Nicobar Islands:

Nicobar Islands: Light to moderate rainfall at most places with **heavy to very rainfall (07-20 cm)** at isolated places during 27th November. It would decrease gradually becoming **heavy rainfall** at isolated places during 28th and 29th November, 2025.

Andaman Islands: Light to moderate rainfall at many places with **heavy rainfall (07-11 cm)** at isolated places is also likely during 27th November. Thereafter, it would decrease gradually.

❖ **Tamil Nadu & Puducherry:** Light to moderate rainfall at many places with **heavy rainfall** at isolated places during 27th November, 2025. The rainfall activity would increase thereafter and light to moderate rainfall at most places with **heavy to very rainfall** at isolated places is very likely on 28th November and **heavy to very heavy at many places & extremely heavy rainfall (>20 cm) at isolated places** on 29th & 30th November, 2025. Thereafter, it would gradually decrease with light to moderate rainfall at many places with **heavy rainfall** at isolated places on 1st December, 2025.

❖ **Coastal Andhra Pradesh:** Light to moderate rainfall at many places with **heavy to very rainfall** at isolated places is very likely on 29th November. Thereafter, it is very likely to increase becoming light to moderate rainfall at most places with **heavy to very rainfall** at isolated places on 30th November. It would then decrease gradually becoming light to moderate rainfall at many places with **heavy rainfall** at isolated places on 1st December.

❖ **Rayalaseema:** Light to moderate rainfall at many places with **heavy to very rainfall** at isolated places is very likely on 29th and 30th November. It would then decrease gradually.

(ii) Wind Warning:

(a) Strait of Malacca, Malaysia and adjoining areas of South Andaman Sea, along & off Nicobar Islands, Indonesia, and Thailand:

Gale wind speed reaching 60-70 gusting to 80 kmph is likely to prevail till 27th November noon. Winds speed would gradually decrease thereafter becoming squally winds speed reaching 50-60 gusting to 70 kmph by 27th evening, 40-50 gusting to 60 kmph from 28th morning for subsequent 12 hours and decrease gradually thereafter.

(b) Adjoining areas of North Andaman Sea

Squally weather with wind speed reaching 35-45 gusting to 55 kmph is very likely to prevail till 27th November.

(c) Southeast Bay of Bengal:

Squally weather with wind speed reaching 35-45 gusting to 55 kmph is very likely till 28th November.

(d) Southwest Bay of Bengal, Gulf of Mannar, Comorin area and along & off Tamil Nadu, Puducherry & Sri Lanka coasts

Squally weather with wind speed reaching 50-60 gusting to 70 kmph likely to prevail on 27th November. Thereafter, it would gradually increase Gale wind speed reaching 60-70 gusting to 80 kmph on 28th November and increase further becoming 80-90 kmph gusting to 100 kmph by 29th morning thereafter till 30th November.

(e) Adjoining areas of Southeast Arabian Sea, Lakshadweep, Maldives and along & off Kerala coast:

Squally weather with wind speed reaching 35-45 kmph gusting to 55 kmph likely to prevail during 27th November.

(f) Westcentral Bay of Bengal and along & off Andhra Pradesh coast:

Squally weather with wind speed reaching 35-45 kmph gusting to 55 kmph likely to commence from 27th November. It is very likely to increase thereafter, becoming squally winds speed

reaching 40-50 kmph gusting to 60 kmph during 28th to 29th November and 50-60 gusting to 70 kmph on 30th November. Thereafter, the winds would decrease gradually becoming 35-45 gusting to 45 kmph on 1st December and decrease further thereafter.

(iii) Sea Condition:

(a) Strait of Malacca, Malaysia and adjoining areas of South Andaman Sea, along & off Nicobar Islands, Indonesia, and Thailand:

High to very rough sea conditions are very likely till 27th noon. It would gradually improve thereafter becoming very rough to rough from 27th evening to 28th morning and improve thereafter.

(b) Adjoining areas of North Andaman Sea

Moderate to rough sea conditions are very likely till 27th November.

(c) Southeast Bay of Bengal:

Moderate to rough sea conditions are very likely on 26th November, becoming rough during 27th to 28th November.

(d) Southwest Bay of Bengal, Gulf of Mannar, Comorin area and along & off Tamil Nadu, Puducherry & Sri Lanka coasts

Rough to very rough sea conditions are likely to prevail becoming very rough to high from 27th evening and high sea conditions thereafter till 30th November.

(e) Adjoining areas of Southeast Arabian Sea, Lakshadweep, Maldives and along & off Kerala coast:

Moderate to rough sea conditions are very likely during 26th to 27th November.

(f) Westcentral Bay of Bengal and along & off Andhra Pradesh coast:

Moderate to rough sea conditions are very likely from 27th November, becoming rough to very rough during 28th to 30th November and gradually improve thereafter.

(iv) Fishermen Warning:

(a) Total suspension of fishing operations in coastal areas of Indonesia & Malaysia, Strait of Malacca, and adjoining areas of South Andaman Sea, along & off Nicobar Islands, and Thailand till 28th November.

(b) Fishermen are advised not to venture into

(i) Southeast Bay of Bengal till 28th November.

(ii) Southwest Bay of Bengal, Gulf of Mannar, Comorin area and along & off Tamil Nadu, Puducherry & Sri Lanka coasts till 30th November

(iii) Adjoining areas of westcentral Bay of Bengal and along & off Andhra Pradesh coast from 27th to 30th November

(iv) Adjoining areas of Southeast Arabian Sea, Lakshadweep, Maldives and along & off Kerala coast during 26th to 27th November.

(c) Those out at sea should avoid coastal areas of Indonesia & Malaysia, Strait of Malacca, and adjoining areas of South Andaman Sea, along & off Nicobar Islands, and Thailand till 28th, Southeast Bay of Bengal till 28th, southwest Bay of Bengal, Gulf of Mannar, Comorin area and along & off Tamil Nadu, Puducherry & Sri Lanka coasts till 30th November;

westcentral Bay of Bengal during 27th to 30th November and Southeast Arabian Sea, Lakshadweep, Maldives and along & off Kerala coast till 27th November.

(d) The fishermen along & off South Andhra Pradesh coast should return to coast before 27th November.

➤ **Impact Expected over Andaman & Nicobar Islands, Tamil Nadu & Puducherry, Kerala and Lakshadweep**

- ❖ Minor damage to Kutcha and some damage to Pucca roads. Flooding of escape routes.
- ❖ Damage to horticulture and standing crops due to inundation and wind.
- ❖ Localized Flooding of roads, water logging in low lying areas and closure of underpasses mainly in urban areas of the above region.
- ❖ Occasional reduction in visibility due to heavy rainfall.
- ❖ Disruption of traffic in city areas and roadways due to water logging in roads and poor visibility due to heavy rain leading to increased travel time and incidents
- ❖ Likely disruption of marine and inland water transportation like small boats and trawlers.
- ❖ Movement in motor boats unsafe

➤ **Action Suggested over Andaman & Nicobar Islands Tamil Nadu & Puducherry, Kerala and Lakshadweep**

- Judicious regulation of onshore/offshore, Port and maritime activities
- Judicious regulation of tourism activities in coastal areas.
- Judicious regulation of surface transports including railways and roadways.
- Avoid going to areas that face the water logging problems often.

Next bulletin will be issued at 1130 hours IST of today, the 27th November, 2025.

(Ananda Kumar Das)
Scientist-F, IMD, New Delhi

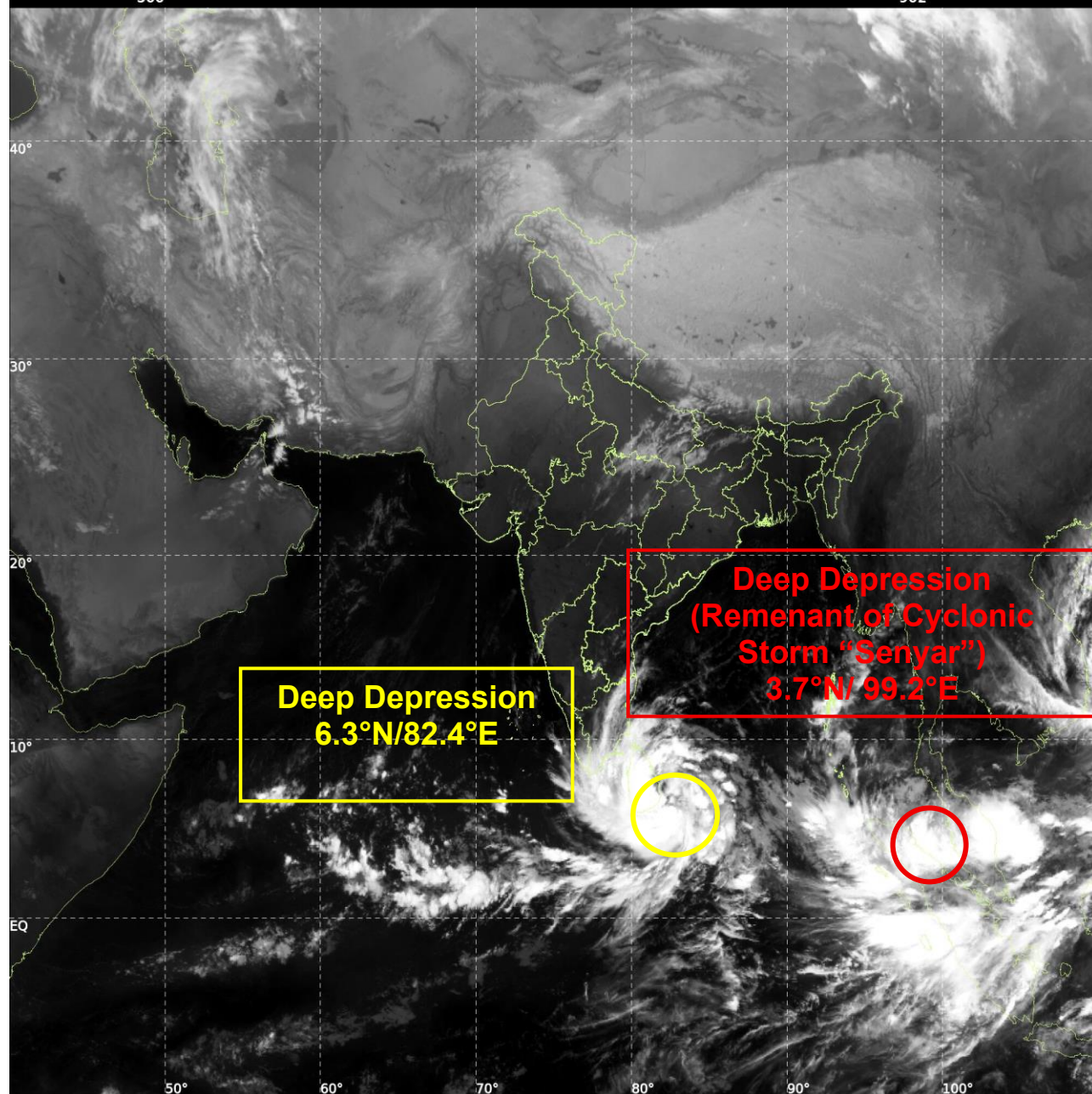
*Copy to: ACWC Kolkata/ACWC Chennai/CWC Bhubaneswar/CWC Vishakhapatnam/CWC Thiruvananthapuram/
Meteorological Centre Vijay Puram/ and Meteorological Centre Amaravati*



INSAT-3DS IMG, Thermal Infrared1 Count @ 10.83 μm
GMT:27-11-2025/(0200-0227) IST:27-11-2025/(0730-0757)
L1C MERCATOR (LINEAR STRETCH: 1%)

500

902





**OBSERVED AND FORECAST TRACK OF DEEP DEPRESSION
(REMANANT OF CYCLONIC STORM "SENYAR") OVER STRAIT OF
MALACCA BASED ON 0000 UTC (0530 Hrs. IST) OF 27TH NOVEMBER
2025**



DATE/TIME IN UTC

IST=UTC + 0530

L: LOW PRESSURE AREA

WML: WELL MARKED LOW PRESSURE AREA

D: DEPRESSION (17-27 KT)

DD: DEEP DEPRESSION (28-33 KT)

CS: CYCLONIC STORM (34-47 KT)

SCS: SEVERE CYCLONIC STORM (48-63KT)

VSCS: VERY SEVERE CYCLONIC STORM (64-89 KT)

ESCS: EXTREMELY SEVERE CYCLONIC STORM (90-119 KT)

SuCS: SUPER CYCLONIC STORM (≥ 120 KT)

● LESS THAN 34 KT

○ 34-47 KT

○ ≥ 48 KT

— OBSERVED TRACK

— FORECAST TRACK

▲ CONE OF UNCERTAINTY



OBSERVED AND FORECAST TRACK ALONGWITH QUADRANT WIND DISTRIBUTION TRACK OF DEEP DEPRESSION (REMANANT OF CYCLONIC STORM "SENYAR") OVER STRAIT OF MALACCA BASED ON 0000 UTC (0530 Hrs. IST) OF 27TH NOVEMBER 2025



DATE/TIME IN UTC

IST=UTC + 0530

L: LOW PRESSURE AREA

WML: WELL MARKED LOW PRESSURE AREA

D: DEPRESSION (17-27 KT)

DD: DEEP DEPRESSION (28-33 KT)

CS: CYCLONIC STORM (34-47 KT)

SCS: SEVERE CYCLONIC STORM (48-63KT)

VSCS: VERY SEVERE CYCLONIC STORM (64-89 KT)

ESCS: EXTREMELY SEVERE CYCLONIC STORM (90-119 KT)

SuCS: SUPER CYCLONIC STORM (≥ 120 KT)

● LESS THAN 34 KT

○ 34-47 KT

● ≥ 48 KT

— OBSERVED TRACK

— FORECAST TRACK

— CONE OF UNCERTAINTY

AREA OF MAXIMUM SUSTAINED WIND SPEED:

— 28-33 KT (52-61 KMPH)

— 34-49 KT (62-91 KMPH)

— 50-63 KT (92-117 KMPH)

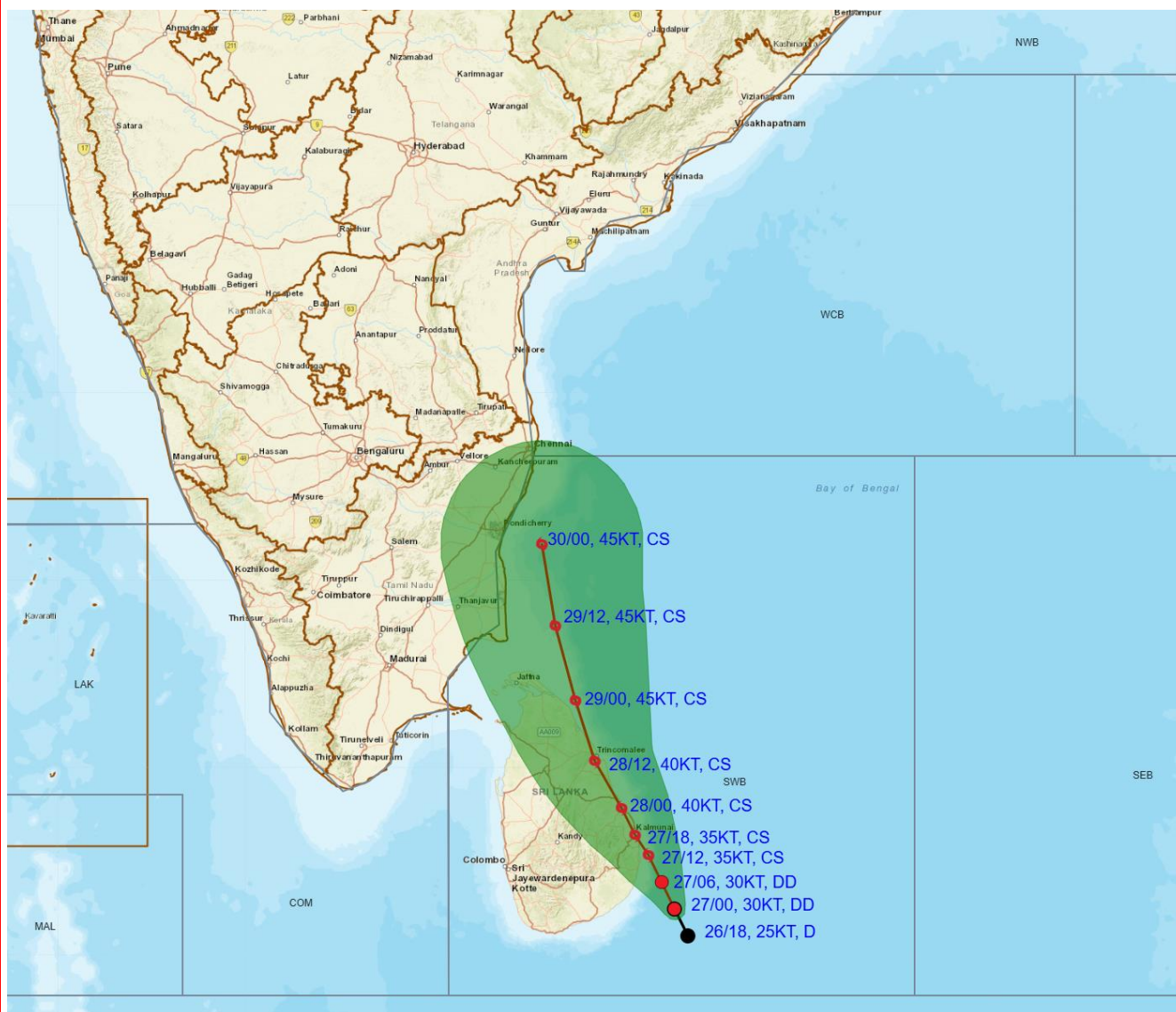
— ≥ 64 KT (≥118 KMPH)

IMPACT OVER THE SEA

MSW (knot/kmph)	Impact	Action
28-33 (52-61)	Very rough seas	Total suspension of fishing operations
34-49 (62-91)	High to very high seas	Total suspension of fishing operations
50-63 (92-117)	Very high seas	Total suspension of fishing operations
≥ 64 (≥118)	Phenomenal	Total suspension of fishing operations



OBSERVED AND FORECAST TRACK OF DEEP DEPRESSION OVER SOUTHWEST BAY OF BENGAL AND ADJOINING SRI LANKA BASED ON 0000 UTC (0530 Hrs. IST) OF 27TH NOVEMBER 2025



DATE/TIME IN UTC

IST=UTC + 0530

L: LOW PRESSURE AREA

WML: WELL MARKED LOW PRESSURE AREA

D: DEPRESSION (17-27 KT)

DD: DEEP DEPRESSION (28-33 KT)

CS: CYCLONIC STORM (34-47 KT)

SCS: SEVERE CYCLONIC STORM (48-63KT)

VSCS: VERY SEVERE CYCLONIC STORM (64-89 KT)

ESCS: EXTREMELY SEVERE CYCLONIC STORM (90-119 KT)

SuCS: SUPER CYCLONIC STORM (≥ 120 KT)



LESS THAN 34 KT



34-47 KT



≥ 48 KT



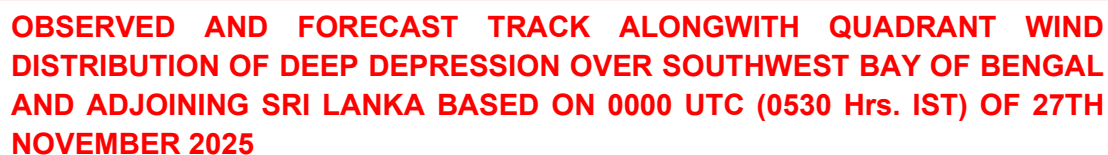
OBSERVED TRACK



FORECAST TRACK

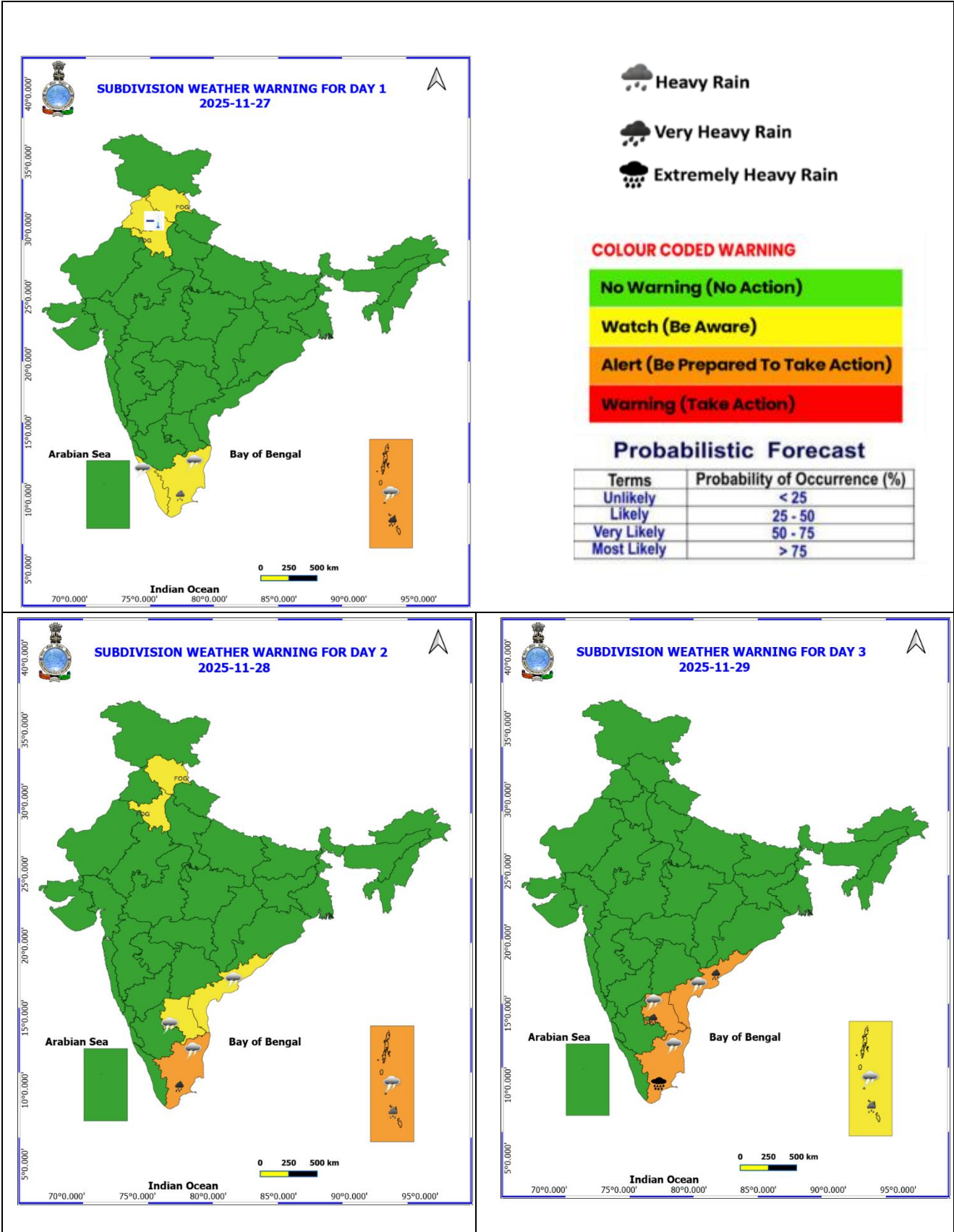


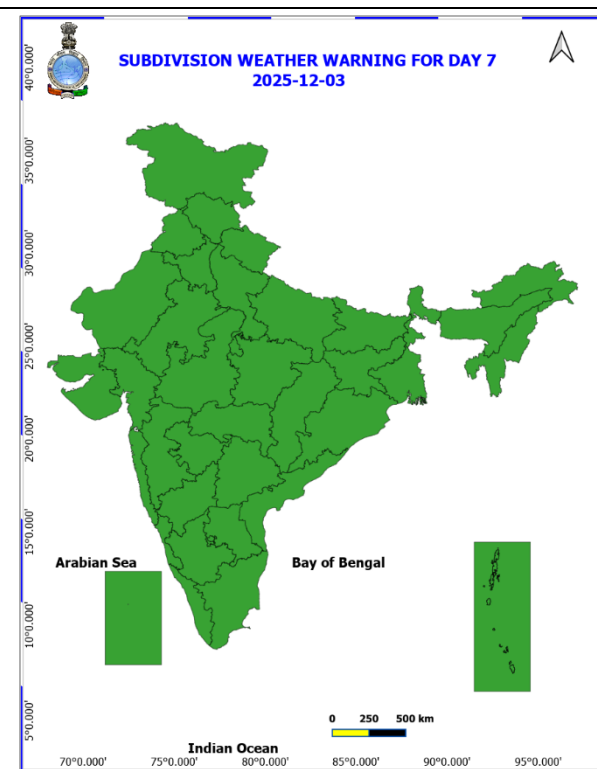
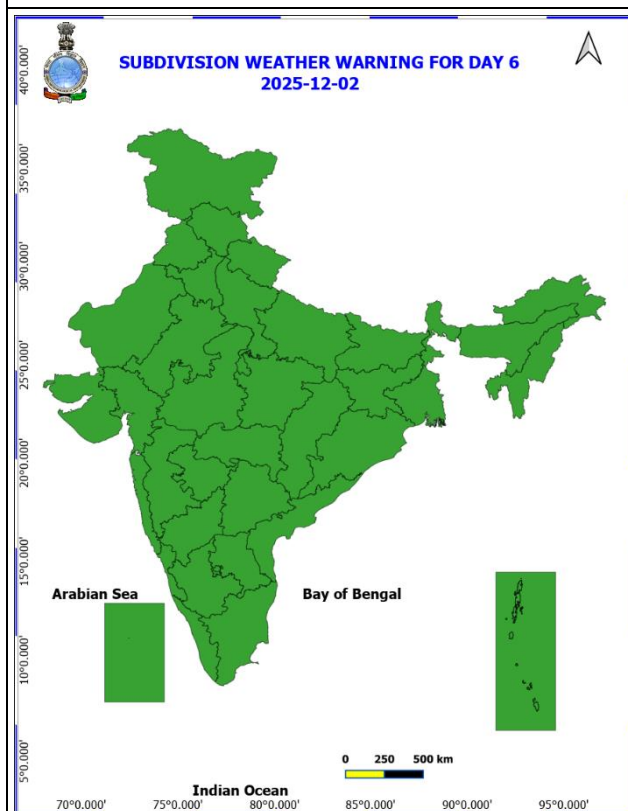
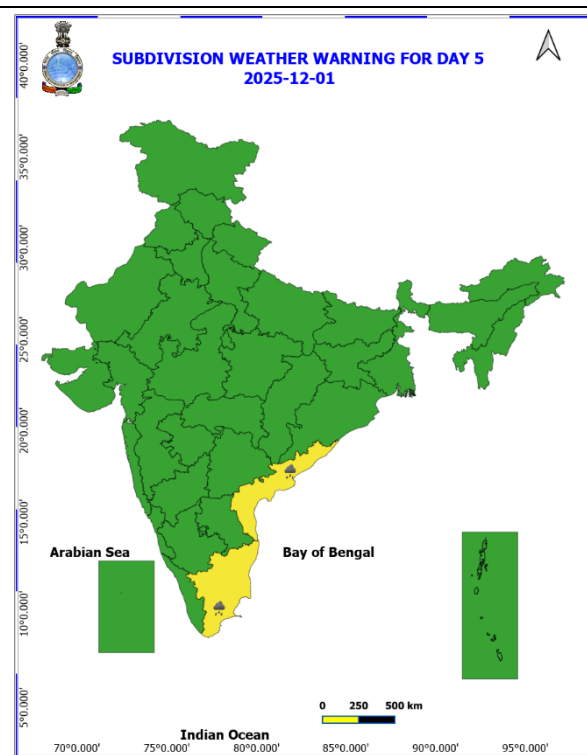
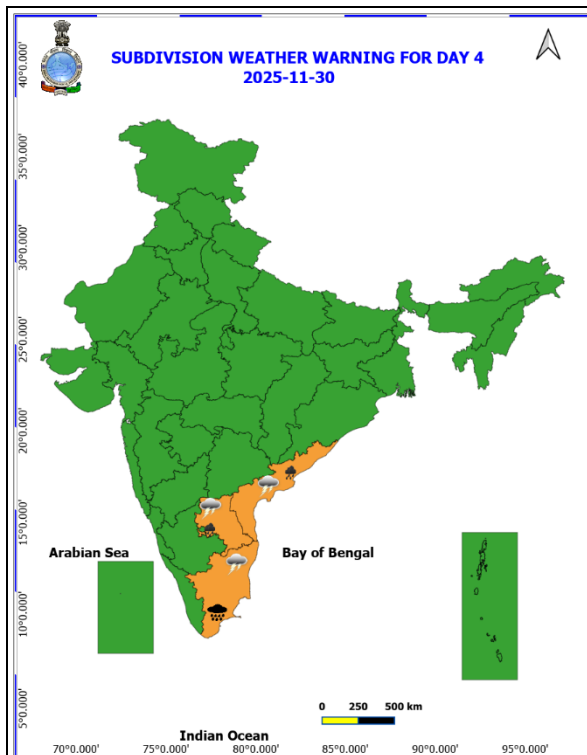
CONE OF UNCERTAINTY



MSW (knot/kmph)	Impact	Action
28-33 (52-61)	Very rough seas	Total suspension of fishing operations
34-49 (62-91)	High to very high seas	Total suspension of fishing operations
50-63 (92-117)	Very high seas	Total suspension of fishing operations
≥ 64 (≥118)	Phenomenal	Total suspension of fishing operations

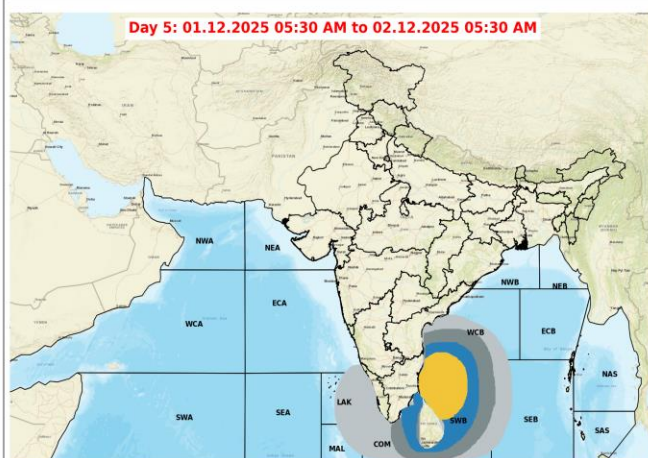
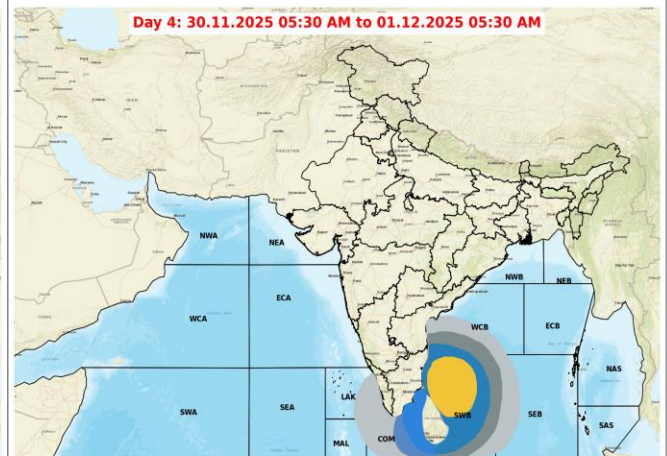
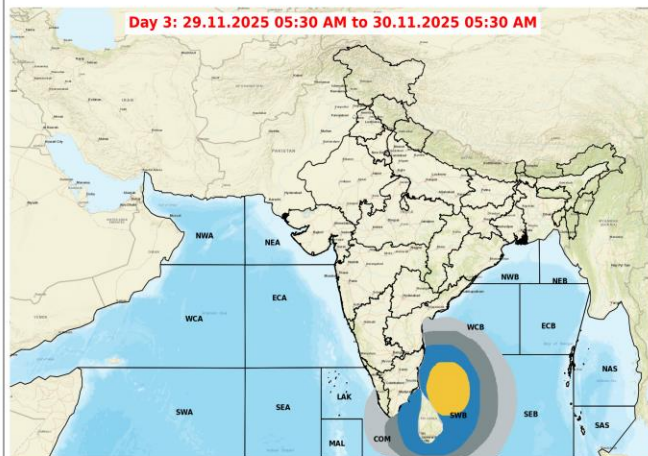
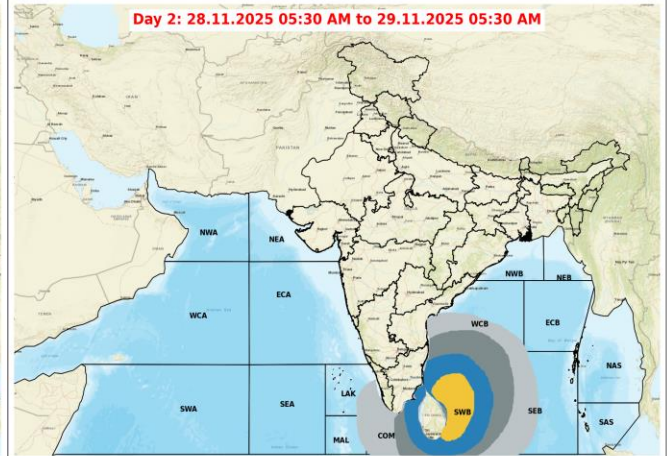
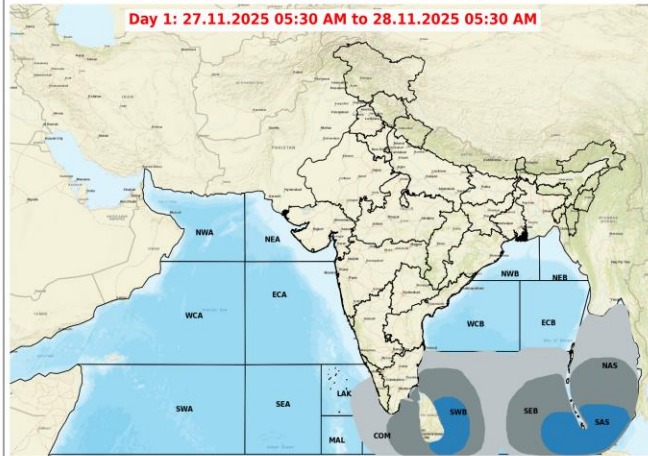
WEATHER WARNING GRAPHICS





- Action may be taken based on **ORANGE** AND **RED** COLOUR warnings.
- Vulnerable regions likely urban and hilly areas action may be initiated for heavy rainfall warning.
- As the lead period increases forecast accuracy decreases.

Fishermen Warning Graphics



Legend

Squally Weather with wind speed 35-45 kmph gusting to 55 kmph	Squally wind with speed 55-65 kmph gusting to 75 kmph
Squally Weather with wind speed 40-50 kmph gusting to 60 kmph	CS with Gale winds with speed 60-80 kmph gusting to 90 kmph
Squally Weather with wind speed 45-55 kmph gusting to 65 kmph	SCS with Gale wind speed 90-110 kmph gusting to 120 kmph
Squally wind with speed 45-55 kmph gusting to 65 kmph	VSCS with Gale wind speed 120-165 kmph gusting to 185 kmph
Squally wind with speed 50-60 kmph gusting to 70 kmph	ESCS with Gale wind speed 165-220 kmph gusting to 245 kmph

Fishermen are advised not to venture into the marked areas.