



India Meteorological Department

(Ministry of Earth Sciences)

NATIONAL BULLETIN NO.: 02 (BOB/02/2024)

TIME OF ISSUE: 1500 HOURS IST

DATED: 19.07.2024

FROM: INDIA METEOROLOGICAL DEPARTMENT (FAX NO. 24643965/24699216/24623220)

TO: CONTROL ROOM, NDM, MINISTRY OF HOME AFFAIRS (FAX.NO. 23093750)

CONTROL ROOM NDMA (FAX.NO. 26701729)

CABINET SECRETARIAT (FAX.NO.23012284, 23018638)

PS TO HON'BLE MINISTER FOR S & T AND EARTH SCIENCES (FAX NO.23316745)

SECRETARY, MOES (FAX NO. 24629777)

H.Q. (INTEGRATED DEFENCE STAFF AND CDS) (FAX NO. 23005137/23005147)

DIRECTOR GENERAL, DOORDARSHAN (23385843)

DIRECTOR GENERAL, AIR (23421105, 23421219)

PIB MOES (FAX NO. 23389042)

UNI (FAX NO. 23355841)

D.G. NATIONAL DISASTER RESPONSE FORCE (NDRF) (FAX NO. 26105912, 2436 3260)

DIRECTOR, PUNCTUALITY, INDIAN RAILWAYS (FAX NO. 23388503)

CHIEF SECRETARY, WEST BENGAL (FAX NO. 033-22144328)

CHIEF SECRETARY, ODISHA (FAX NO. 0674-2536660)

CHIEF SECRETARY, ANDHRA PRADESH (FAX NO. 0863-2441029, 08645-246600)

CHIEF SECRETARY, CHHATTISGARH (FAX NO. 0771-2221206)

CHIEF SECRETARY, JHARKHAND (FAX NO. 0651-2400255)

CHIEF SECRETARY, KARNATAKA (FAX NO. 080-22258913)

CHIEF SECRETARY, MAHARASHTRA (FAX NO. 022- 22028594)

CHIEF SECRETARY, GUJARAT (FAX NO. 079-23250305)

CHIEF SECRETARY, GOVT. OF TELANGANA (FAX NO. 040-23453700)

Sub: Depression over Northwest and adjoining Westcentral Bay of Bengal off Odisha and adjoining North Andhra Pradesh coasts

The depression over Northwest and adjoining Westcentral Bay of Bengal off Odisha and adjoining north Andhra Pradesh coasts moved northwestwards with a speed of 7 kmph during past 3 hours and lay centered at 1130 hours IST of today, the 19th July, 2024 over the same region near latitude 19.3°N and longitude 86.1°E, about 60 km south-southeast of Puri (Odisha), 130 km East of Gopalpur (Odisha), 130 km south-southwest of Paradip (Odisha) and 230 km east-northeast of Kalingapatnam (Andhra Pradesh).

It is likely to move northwestwards and cross Odisha coast near Puri as a depression during early morning hours of tomorrow, the 20th July, 2024. Thereafter, it would move west-northwestwards across Odisha & Chhattisgarh and weaken gradually during subsequent 24 hours.

Warnings:

(i) Rainfall warning

Odisha:

- ❖ **South Odisha:** Light to moderate rainfall at most places with heavy to very heavy rainfall at a few places is very likely over South Odisha on 19th and 20th July and extremely heavy rainfall at isolated places on 19th July.
- ❖ **North Odisha:** Light to moderate rainfall is very likely at most places with heavy to very heavy rainfall at isolated places on 19th and 20th July.

Gangetic West Bengal: Light to moderate rainfall is very likely at most places on 19th and 20th July.

Spatial rainfall distribution: Isolated: <25%, A few: 26-50%, Many: 51-75%, Most: 76-100%

Rainfall amount (mm): Heavy rain: 64.5 – 115.5, Very heavy rain: 115.6 – 204.4, Extremely heavy rain: 204.5 or more.

Andhra Pradesh:

- ❖ **North Coastal Andhra Pradesh:** Light to moderate rainfall at most places with heavy to very heavy rainfall at a few places is most likely on 19th & 20th July and extremely heavy rainfall at isolated places on 19th July.
- ❖ **South Coastal Andhra Pradesh:** Light to moderate rainfall at most places with heavy rainfall at isolated places is likely over South Coastal Andhra Pradesh on 19th and 20th July.

Jharkhand: Light to moderate rainfall at most places with heavy rainfall at isolated places is very likely on 20th July.

Chattisgarh: Light to moderate rainfall at most places with heavy to very heavy rainfall at isolated places is very likely on 19th and 20th July and extremely heavy rainfall at isolated places on 19th July.

Telangana & Vidarbha: Light to moderate rainfall at most places with heavy to very heavy rainfall at a few places and extremely heavy rainfall at isolated places is very likely on 19th July. Light to moderate rainfall at most places with heavy to extremely heavy rainfall at isolated places is very likely on 20th July.

(ii) Wind warning

Squally weather with wind speed reaching 45-55 kmph gusting to 65 kmph is very likely to prevail over northwest and adjoining westcentral Bay of Bengal and along and off North Andhra Pradesh, Odisha, West Bengal & adjoining Bangladesh coasts on 19th and 20th July and would decrease gradually thereafter.

(iv) Sea Condition: Rough to very rough sea condition is very likely to prevail over northwest and adjoining westcentral Bay of Bengal and along and off North Andhra Pradesh, Odisha, West Bengal & adjoining Bangladesh coasts on 19th and 20th July and would improve gradually thereafter.

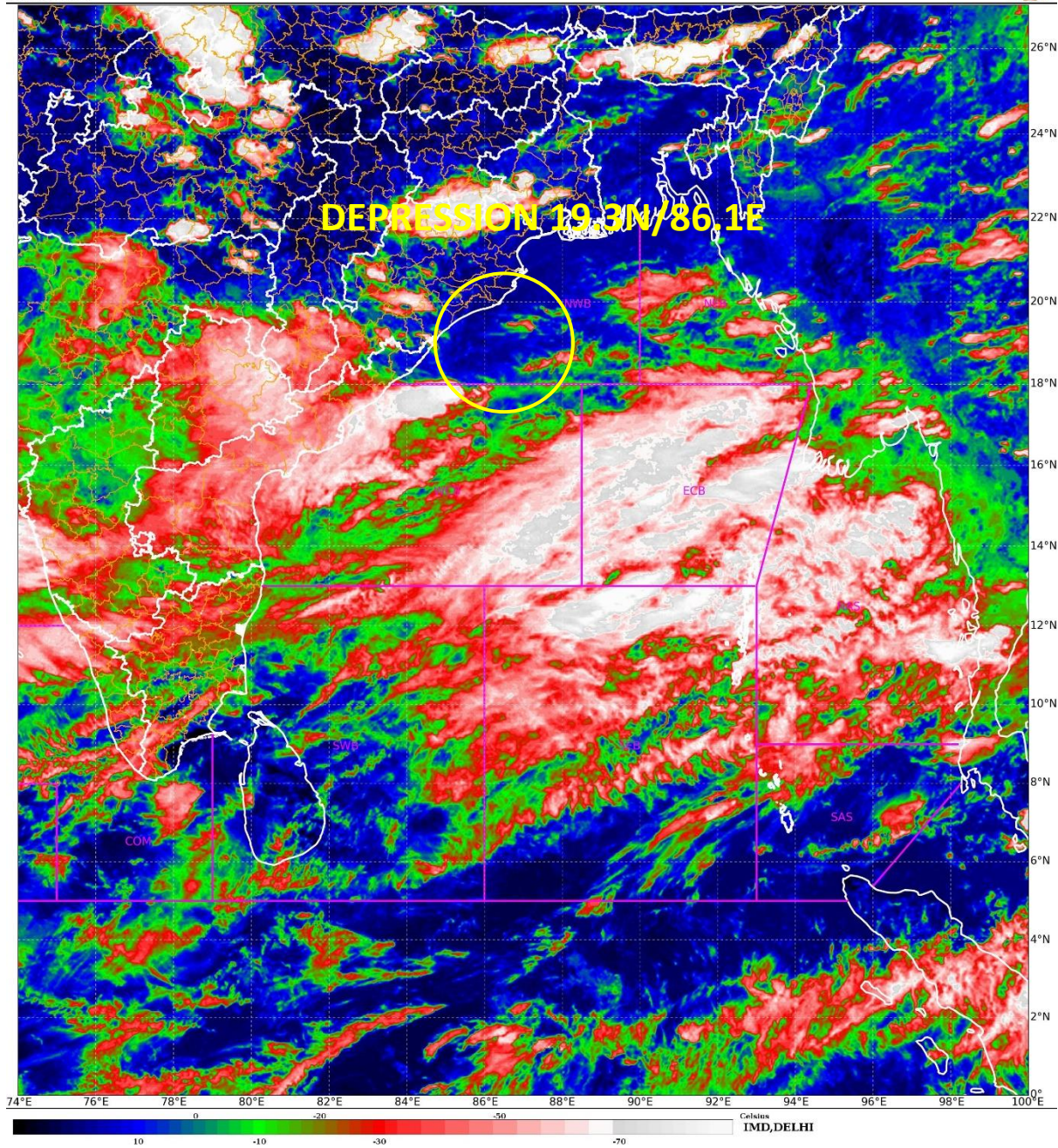
(v) Fishermen Warning

Fishermen are advised not to venture into northwest and adjoining westcentral Bay of Bengal and along & off North Andhra Pradesh, Odisha, West Bengal & adjoining Bangladesh coasts on 19th and 20th July.

The next bulletin will be issued at 2030hrs IST of today, 19th July, 2024.

(Monica Sharma)
Scientist-D, RSMC, New Delhi

Copy to: CRS, Pune/ACWC Kolkata/Chennai/Mumbai/CWC Bhubaneswar/CWC
Visakhapatnam/CWC Ahmedabad/MC Hyderabad/MC Raipur/MC Amravati/MC Ranchi/RMC Nagpur



Spatial rainfall distribution: Isolated: <25%, A few: 26-50%, Many: 51-75%, Most: 76-100%
Rainfall amount (mm): Heavy rain: 64.5 – 115.5, Very heavy rain: 115.6 – 204.4, Extremely heavy rain: 204.5 or more.



OBSERVED AND FORECAST TRACK OF DEPRESSION OVER NORTHWEST AND ADJOINING WESTCENTRAL BAY OF BENGAL OFF ODISHA AND ADJOINING NORTH ANDHRA PRADESH COASTS BASED ON 0600 UTC OF 19TH JULY, 2024.



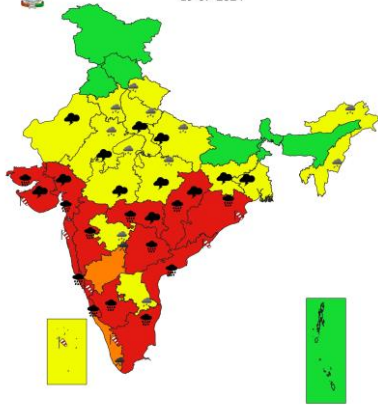
DATE/TIME IN UTC
 IST=UTC + 0530
 L: LOW PRESSURE AREA
 WML: WELL MARKED LOW PRESSURE AREA
 D: DEPRESSION (17-27 KT)
 DD: DEEP DEPRESSION (28-33 KT)
 CS: CYCLONIC STORM (34-47 KT)
 SCS: SEVERE CYCLONIC STORM (48-63KT)
 VSCS: VERY SEVERE CYCLONIC STORM (64-89 KT)
 ESCS: EXTREMELY SEVERE CYCLONIC STORM (90-119 KT)
 SuCS: SUPER CYCLONIC STORM (≥ 120 KT)

- LESS THAN 34 KT
- 34-47 KT
- ≥ 48 KT
- OBSERVED TRACK
- FORECAST TRACK
- CONE OF UNCERTAINTY

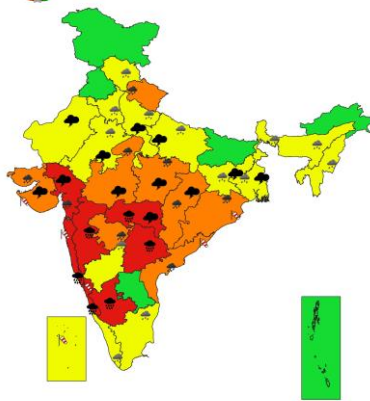
Forecast	DISTANCE (KM) AND DIRECTION FROM STATIONS			
Date and Time (UTC)	PURI	GOPALPUR	PARADIP (CWR)	KALINGPATAM
19.07.24/0600	60, SSE	130, E	130, SSW	230, ENE

Spatial rainfall distribution: Isolated: <25%, A few: 26-50%, Many: 51-75%, Most: 76-100%
 Rainfall amount (mm): Heavy rain: 64.5 – 115.5, Very heavy rain: 115.6 – 204.4, Extremely heavy rain: 204.5 or more.

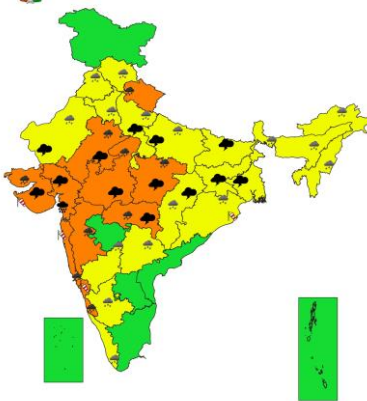
SUBDIVISIONWISE WEATHER WARNING FOR DAY 1
19-07-2024



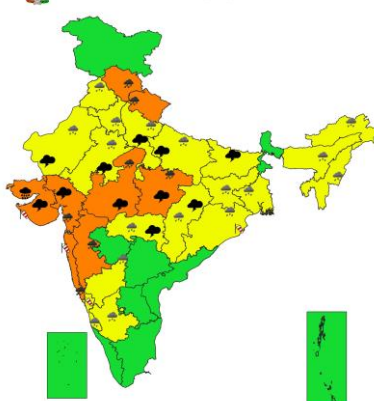
SUBDIVISIONWISE WEATHER WARNING FOR DAY 2
20-07-2024



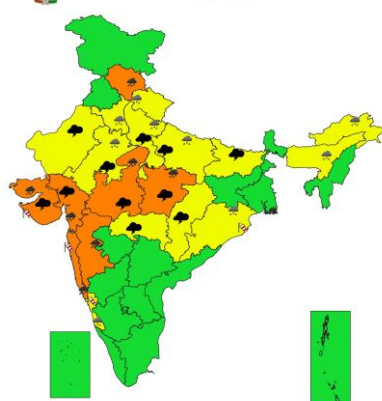
SUBDIVISIONWISE WEATHER WARNING FOR DAY 3
21-07-2024



SUBDIVISIONWISE WEATHER WARNING FOR DAY 4
22-07-2024

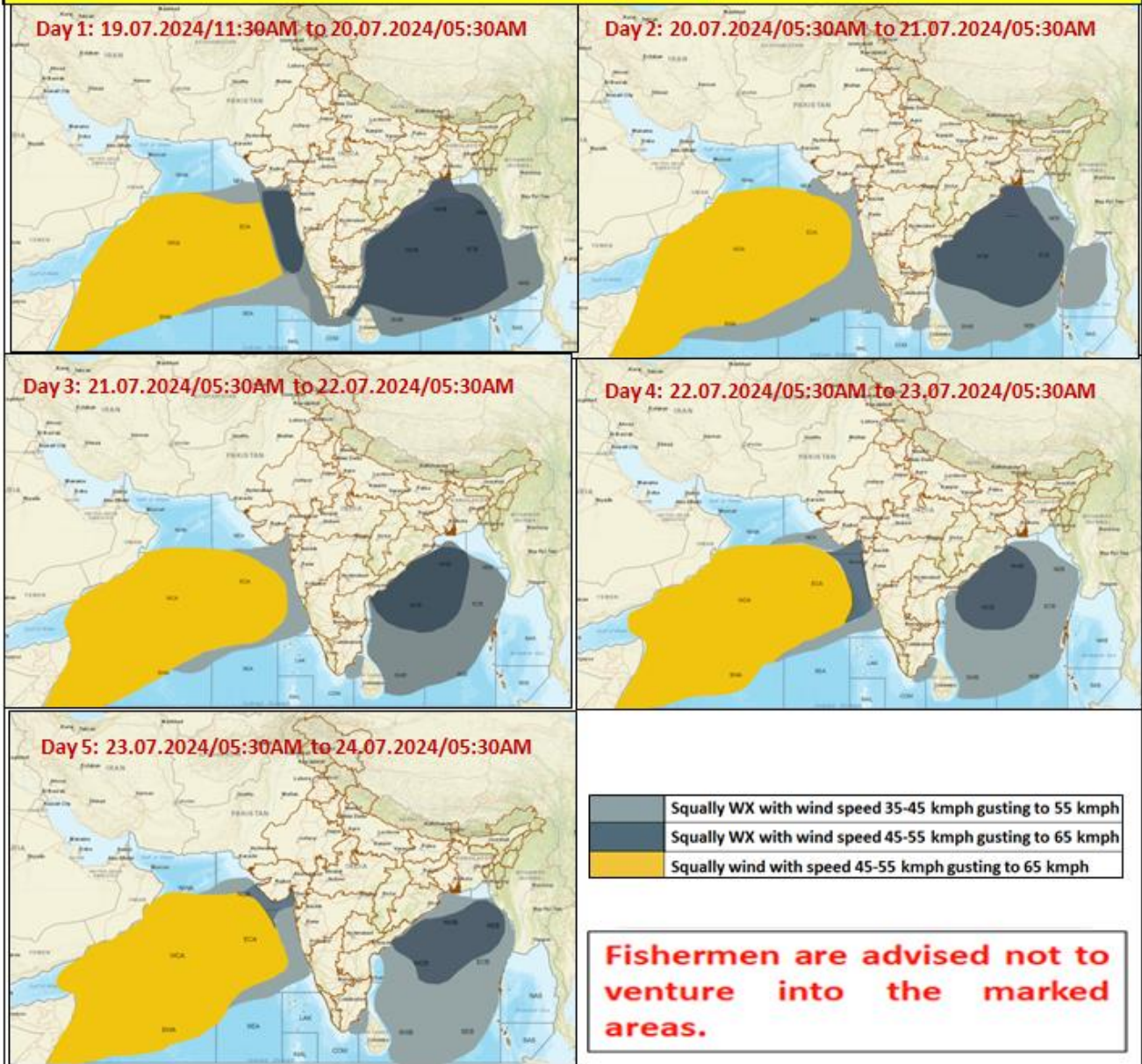


SUBDIVISIONWISE WEATHER WARNING FOR DAY 5
23-07-2024



Spatial rainfall distribution: Isolated: <25%, A few: 26-50%, Many: 51-75%, Most: 76-100%
Rainfall amount (mm): Heavy rain: 64.5 – 115.5, Very heavy rain: 115.6 – 204.4, Extremely heavy rain: 204.5 or more.

Fishermen Warning Graphics



Spatial rainfall distribution: Isolated: <25%, A few: 26-50%, Many: 51-75%, Most: 76-100%
 Rainfall amount (mm): Heavy rain: 64.5 – 115.5, Very heavy rain: 115.6 – 204.4, Extremely heavy rain: 204.5 or more.