



**India Meteorological Department
(Ministry of Earth Sciences)**

NATIONAL BULLETIN NO. 08 (BOB/10/2022)

TIME OF ISSUE: 2115 HOURS IST

DATED: 23.12.2022

FROM: INDIA METEOROLOGICAL DEPARTMENT (FAX NO. 24643965/24699216/24623220)

TO: CONTROL ROOM, NDM, MINISTRY OF HOME AFFAIRS (FAX.NO. 23093750)

CONTROL ROOM NDMA (FAX.NO. 26701729)

CABINET SECRETARIAT (FAX.NO.23012284, 23018638)

PS TO HON'BLE MINISTER FOR S & T AND EARTH SCIENCES (FAX NO.23316745)

SECRETARY, MOES (FAX NO. 24629777)

H.Q. (INTEGRATED DEFENCE STAFF AND CDS) (FAX NO. 23005137/23005147)

DIRECTOR GENERAL, DOORDARSHAN (23385843)

DIRECTOR GENERAL, AIR (23421105, 23421219)

PIB MOES (FAX NO. 23389042)

UNI (FAX NO. 23355841)

D.G. NATIONAL DISASTER RESPONSE FORCE (NDRF) (FAX NO. 26105912, 2436 3260)

DIRECTOR, PUNCTUALITY, INDIAN RAILWAYS (FAX NO. 23388503)

CHIEF SECRETARY, TAMIL NADU (FAX NO 044-25672304)

CHIEF SECRETARY, ANDHRA PRADESH (FAX NO. 0863-2441029, 08645-246600)

CHIEF SECRETARY, PUDUCHERRY (FAX NO 0413-2334145)

ADMINISTRATOR, ANDAMAN & NICOBAR ISLANDS (FAX NO. 03192- 232656)

CHIEF SECRETARY, KARNATAKA (FAX NO. 080-22258913)

CHIEF SECRETARY, KERALA (FAX NO. 0471-2327176)

ADMINISTRATOR, LAKSHADWEEP ISLANDS (FAX NO. 0413-262184)

Sub: Depression over Southwest and adjoining Southeast Bay of Bengal

The Depression over Southwest Bay of Bengal moved east-northeastwards with a speed of 12 kmph during past 06 hours and lay centered at 1730 hours IST of today, the 23rd December over Southwest & adjoining Southeast Bay of Bengal near latitude 10.6°N and longitude 85.4°E about 510 km east-northeast of Trincomalee (Sri Lanka), 610 km east of Nagappattinam (Tamil Nadu) and 630 km east-southeast of Chennai (Tamil Nadu).

It is likely to move slowly over Southwest Bay of Bengal, make a loop over the same region and then move west-southwestwards towards Comorin Area across Sri Lanka during next 48 hours.

Warnings:

Rainfall warning (Graphics enclosed)

- Light to moderate rainfall at many places with heavy rainfall at isolated places is likely over south coastal Tamil Nadu on 25th & 26th December 2022.
- Light to moderate rainfall at a few places with heavy rainfall at isolated places is likely over south Kerala on 26th December 2022.
- Light to moderate rainfall at a few places with heavy rainfall at isolated places is likely over Lakshadweep Islands on 27th December 2022.

Wind warning (Graphics enclosed):

Southwest Bay of Bengal along & off Tamil Nadu and Sri Lanka coasts:

Squally wind speed reaching 45-55 kmph gusting to 65 kmph is likely to prevail till 25th December morning becoming 40-50 kmph gusting to 60 kmph till 26th morning and decrease thereafter.

Adjoining areas of southeast & westcentral Bay of Bengal:

Squally weather with wind speed reaching 40-50 kmph gusting to 60 kmph is likely to prevail till 24th December morning and decrease thereafter.

Gulf of Mannar and Comorin Area along & off south Tamil Nadu & west Sri Lanka coasts:

Squally weather with wind speed reaching 40-50 kmph gusting to 60 kmph is likely to prevail on 24th December becoming squally wind speed reaching 45-55 kmph gusting to 65 kmph during 25th and 26th December.

Lakshadweep Islands & adjoining Southeast Arabian Sea:

Squally weather with wind speed reaching 40-50 kmph gusting to 60 kmph is likely to prevail on 27th December.

Sea condition:

Southwest Bay of Bengal along & off Tamil Nadu and Sri Lanka coasts:

Sea condition is likely to be rough to very rough till 26th December morning and improve thereafter.

Adjoining areas of southeast & westcentral Bay of Bengal:

Sea condition is likely to be rough till 24th December morning and improve thereafter.

Gulf of Mannar and Comorin Area along & off south Tamil Nadu & west Sri Lanka coasts:

Sea condition is likely to be rough to very rough during 25th and 26th December.

Lakshadweep Islands & adjoining Southeast Arabian Sea:

Sea condition is likely to be rough to very rough on 27th December.

Fishermen Warning (Graphics Enclosed):

Fishermen are advised not to venture into

- Southwest Bay of Bengal and along & off Sri Lanka coast during 23rd–25th December.
- Gulf of Mannar and Comorin Area along & off south Tamil Nadu and west Sri Lanka coasts during 23rd-26th December.
- Sea areas of Lakshadweep Islands & adjoining Southeast Arabian Sea during 27th December.

The System is continuously being monitored and next bulletin will be issued at 0230 hours IST of 24th December, 2022.

(Ananda Kumar Das)

Scientist E, Cyclone Warning Division, New Delhi

Copy to: ACWC Mumbai & Chennai/ CWC Ahmedabad/ CWC Thiruvananthapuram/MC Goa

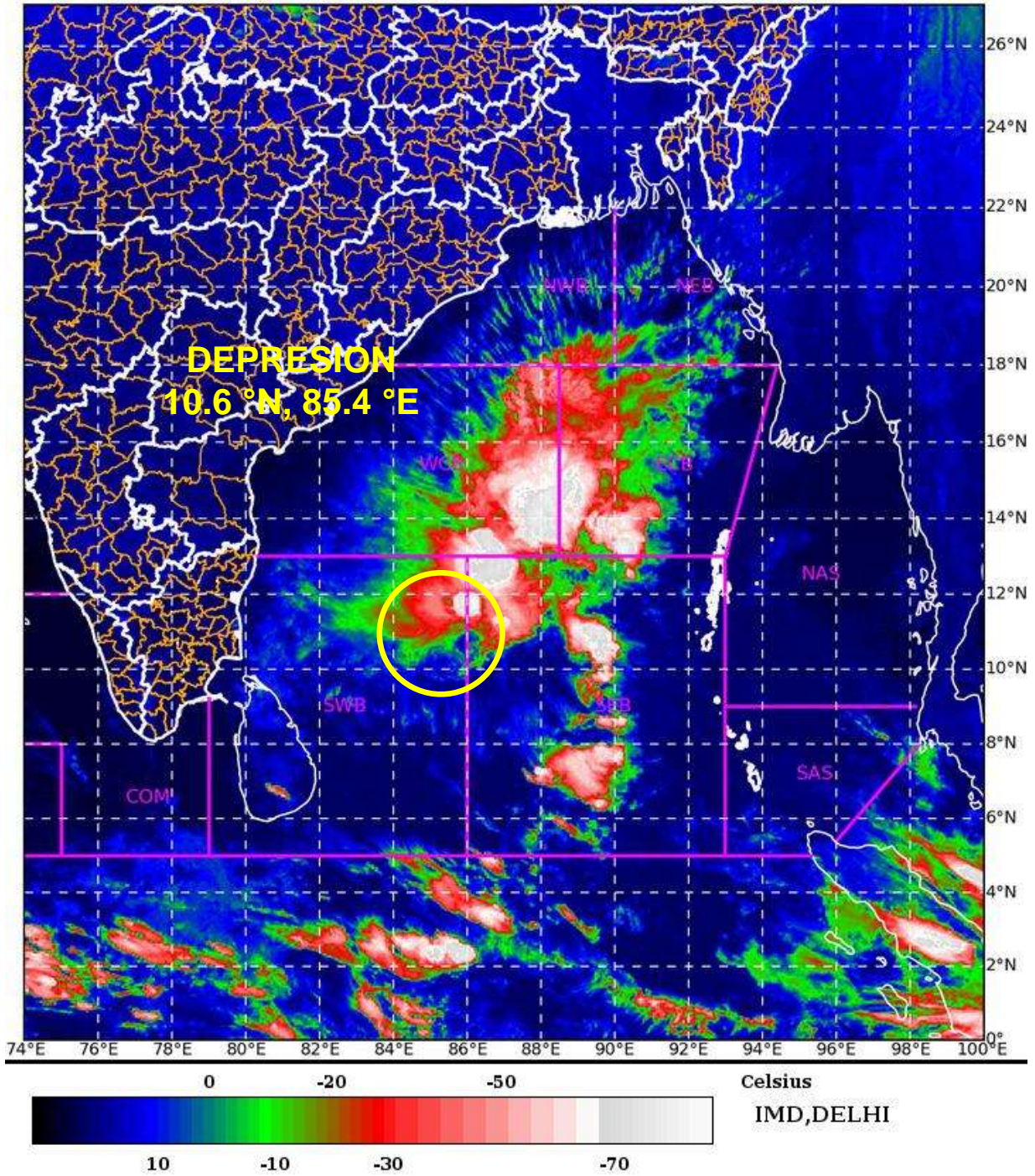
LEGEND: Heavy Rainfall: 64.5 to 115.5mm, **Very Heavy Rainfall:** 115.6 to 204.4mm **Most Places:** more than 76% of total stations, **Isolated Places:** Less than 25% of total

SAT : INSAT-3DR IMG 23-12-2022/(1445 to 1512) GMT

IMG_TIR1_TEMP 10.8 um 23-12-2022/(2015 to 2042) IST



L1C Mercator





OBSERVED AND FORECAST TRACK OF DEPRESSION OVER SOUTHWEST AND ADJOINING SOUTHEAST BAY OF BENGAL BASED ON 1200 UTC OF 23rd DECEMBER, 2022



DATE/TIME IN UTC

IST=UTC + 0530

L: LOW PRESSURE AREA

WML: WELL MARKED LOW PRESSURE AREA

D: DEPRESSION (17-27 KT)

DD: DEEP DEPRESSION (28-33 KT)

CS: CYCLONIC STORM (34-47 KT)

SCS: SEVERE CYCLONIC STORM (48-63KT)

VSCS: VERY SEVERE CYCLONIC STORM (64-89 KT)

ECS: EXTREMELY SEVERE CYCLONIC STORM (90-119 KT)

SuCS: SUPER CYCLONIC STORM (≥ 120 KT)



LESS THAN 34 KT



34-47 KT



≥ 48 KT



OBSERVED TRACK

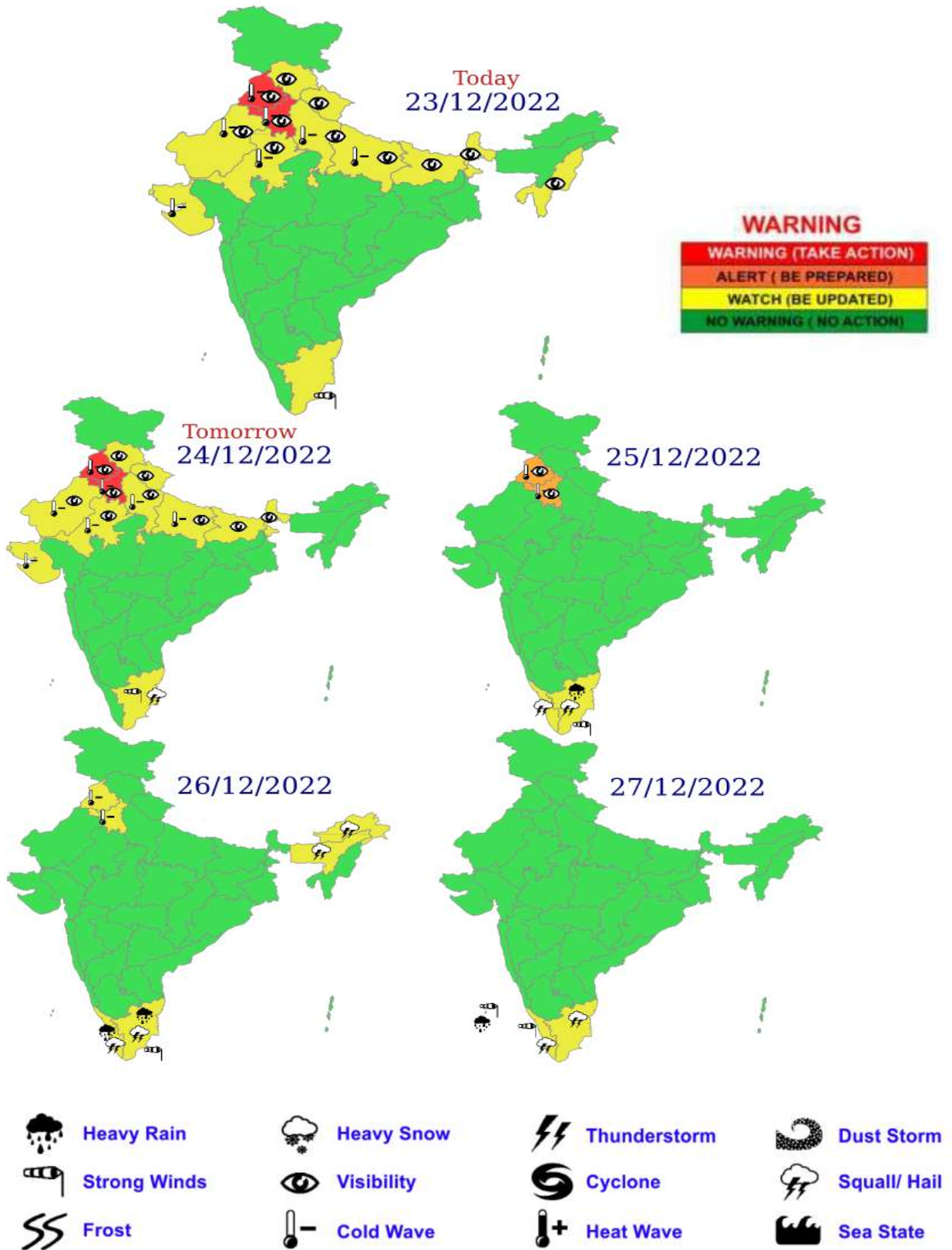


FORECAST TRACK



CONE OF UNCERTAINTY

WEATHER WARNING GRAPHICS



Fishermen warning graphics



Squally WX with wind speed 40-50 kmph gusting to 60 kmph
Squally wind speed 45-55 kmph gusting to 65 kmph

Fishermen are advised not to venture into the marked areas.