



**India Meteorological Department
(Ministry of Earth Sciences)**

NATIONAL BULLETIN NO. 3

TIME OF ISSUE:2000 HOURS IST

DATED: 30.01.2023

FROM: INDIA METEOROLOGICAL DEPARTMENT (FAX NO. 24643965/24699216/24623220)

TO: CONTROL ROOM, NDM, MINISTRY OF HOME AFFAIRS (FAX.NO. 23093750)

CONTROL ROOM NDMA (FAX.NO. 26701729)

CABINET SECRETARIAT (FAX.NO.23012284, 23018638)

PS TO HON'BLE MINISTER FOR S & T AND EARTH SCIENCES (FAX NO.23316745)

SECRETARY, MOES (FAX NO. 24629777)

H.Q. (INTEGRATED DEFENCE STAFF AND CDS) (FAX NO. 23005137/23005147)

DIRECTOR GENERAL, DOORDARSHAN (23385843)

DIRECTOR GENERAL, AIR (23421105, 23421219)

PIB MOES (FAX NO. 23389042)

UNI (FAX NO. 23355841)

D.G. NATIONAL DISASTER RESPONSE FORCE (NDRF) (FAX NO. 26105912, 2436 3260)

DIRECTOR, PUNCTUALITY, INDIAN RAILWAYS (FAX NO. 23388503)

CHIEF SECRETARY, ANDAMAN & NICOBAR ISLANDS (FAX NO. 03192- 232656)

CHIEF SECRETARY, GOVT. OF TAMIL NADU (FAX NO. 044-25672304)

CHIEF SECRETARY, GOVT. OF PUDUCHERRY (FAX NO. 0413-2337575, 2334145)

Sub: Depression over Southwest & adjoining Southeast Bay of Bengal

The Depression over Southeast & adjoining Southwest Bay of Bengal moved nearly west-northwestwards with a speed of 13 kmph during past 6 hours and lay centered at 1730 hours IST of today, the 30th January, 2023 over Southwest & adjoining Southeast Bay of Bengal near latitude 8.0°N and longitude 86.0°E, about 530 km east-southeast of Trincomalee (Sri Lanka) and 750 km east-southeast of Karaikal (India).

It is very likely to move west-northwestwards till evening of 31st January then recurve gradually south-southwestwards and cross Sri Lanka coast in the forenoon of 01st February 2023.

Forecast track and intensity are given below:

Date/Time(IST)	Position (Lat. °N/ long. °E)	Maximum sustained surface wind speed (Kmph)	Category of cyclonic disturbance
30.01.23/1730	8.0/86.0	45-55 gusting to 65	Depression
31.01.23/0530	8.2/84.6	45-55 gusting to 65	Depression
31.01.23/1730	8.0/83.4	45-55 gusting to 65	Depression
01.02.23/0530	7.3/82.3	45-55 gusting to 65	Depression
01.02.23/1730	6.5/81.4	40-50 gusting to 60	Depression

Warnings:

(i) Rainfall (warning graphics enclosed)

- ❖ Light/moderate rainfall at most places with isolated heavy rainfalls very likely over south Tamil Nadu on 1st and 2nd February.

(ii) Wind warning:

❖ **Southeast Bay of Bengal:**

- Squally wind with speed reaching 45-55 kmph gusting to 65 kmph on 30th January.

❖ **Southwest Bay of Bengal:**

- Squally wind with speed reaching 45-55 kmph gusting to 65 kmph during 30th January to 1nd February.
- Squally wind with speed reaching 40-50 kmph gusting to 60 kmph on 2nd February.

❖ **Along & off Sri Lanka coast:**

- Squally wind with speed reaching 45-55 kmph gusting to 65 kmph during 30th January to 1nd February.
- Squally wind with speed reaching 40-50 kmph gusting to 60 kmph on 2nd February.

❖ **Gulf of Mannar and Comorin area and along & off south Tamil Nadu & Karaikal coasts:**

- Squally wind speed reaching 40-50 kmph gusting to 60 kmph during 1st to 2nd February.

❖ **Along & off north Tamil Nadu & Puducherry coasts:**

- Strong wind speed reaching 30-40 kmph gusting to 50 kmph during 1st to 2nd February.

(iii) Sea condition

❖ **Sea condition is likely to be rough to very rough**

- Southeast Bay of Bengal on 30th January.
- Southwest Bay of Bengal during 30th January to 2nd February.
- Along & off Sri Lanka coast during 31st January to 2nd February.
- Gulf of Mannar and adjoining Comorin area and along & off south Tamil Nadu coast during 1st and 2nd February

❖ **Sea condition is likely to be moderate to rough**

- Along and off north Tamil Nadu & Puducherry coasts during 1st and 2nd February.

(iv) Fishermen Warning (warning graphics enclosed)

Fishermen are advised not to venture into:

- ❖ Southeast Bay of Bengal on 30th January.
- ❖ Southwest Bay of Bengal, Gulf of Mannar, Comorin Area and along & off Sri Lanka and south Tamil Nadu & Karaikal coasts till 2nd February.

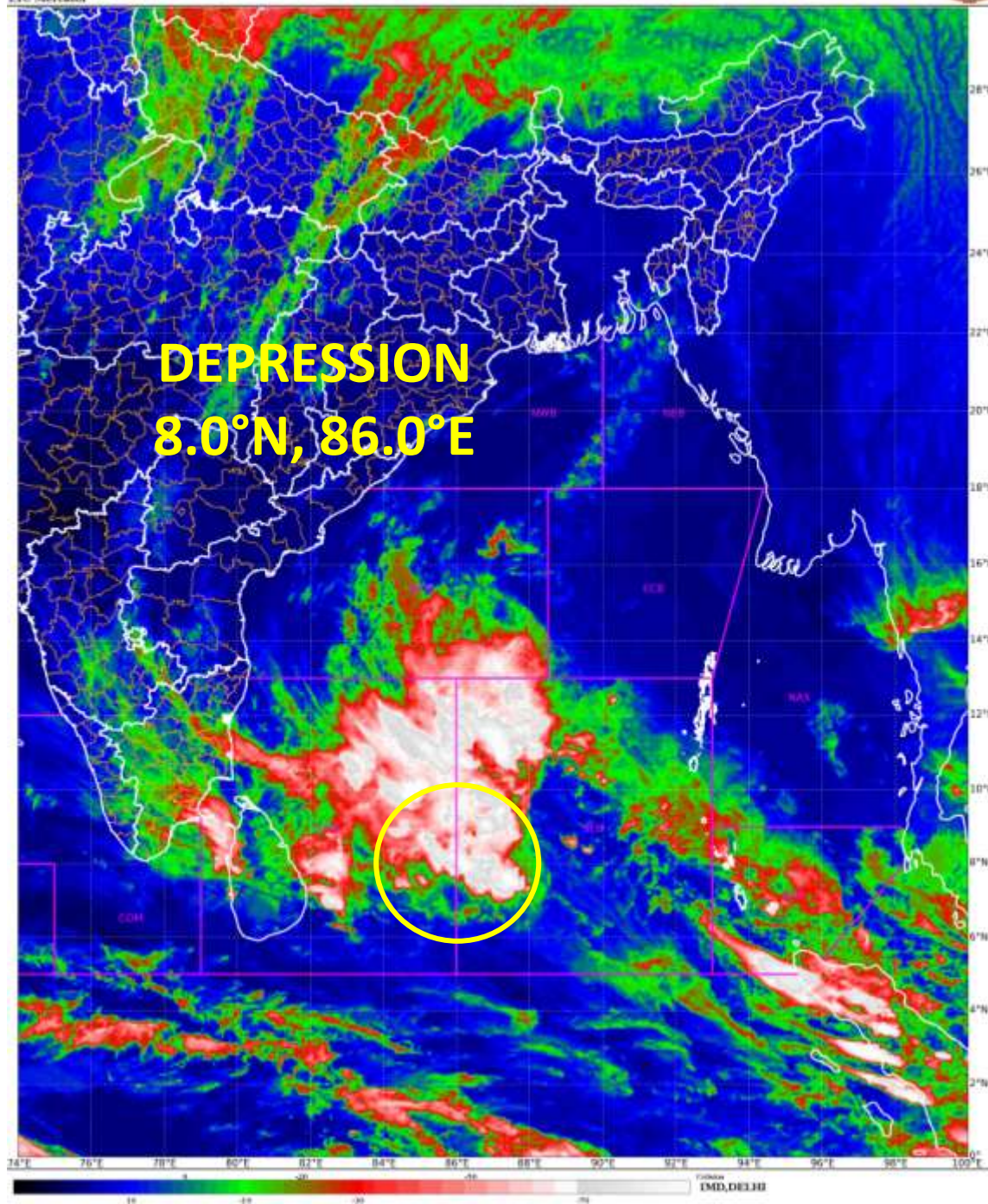
Fishermen out at sea off Tamil Nadu coasts are advised to return to the coasts by 31st January.

The system is under continuous surveillance and the next message will be issued at 0230 hours IST of tomorrow, the 31st January, 2023.

(Ananda Kumar Das)
Scientist F, Cyclone Warning, New Delhi

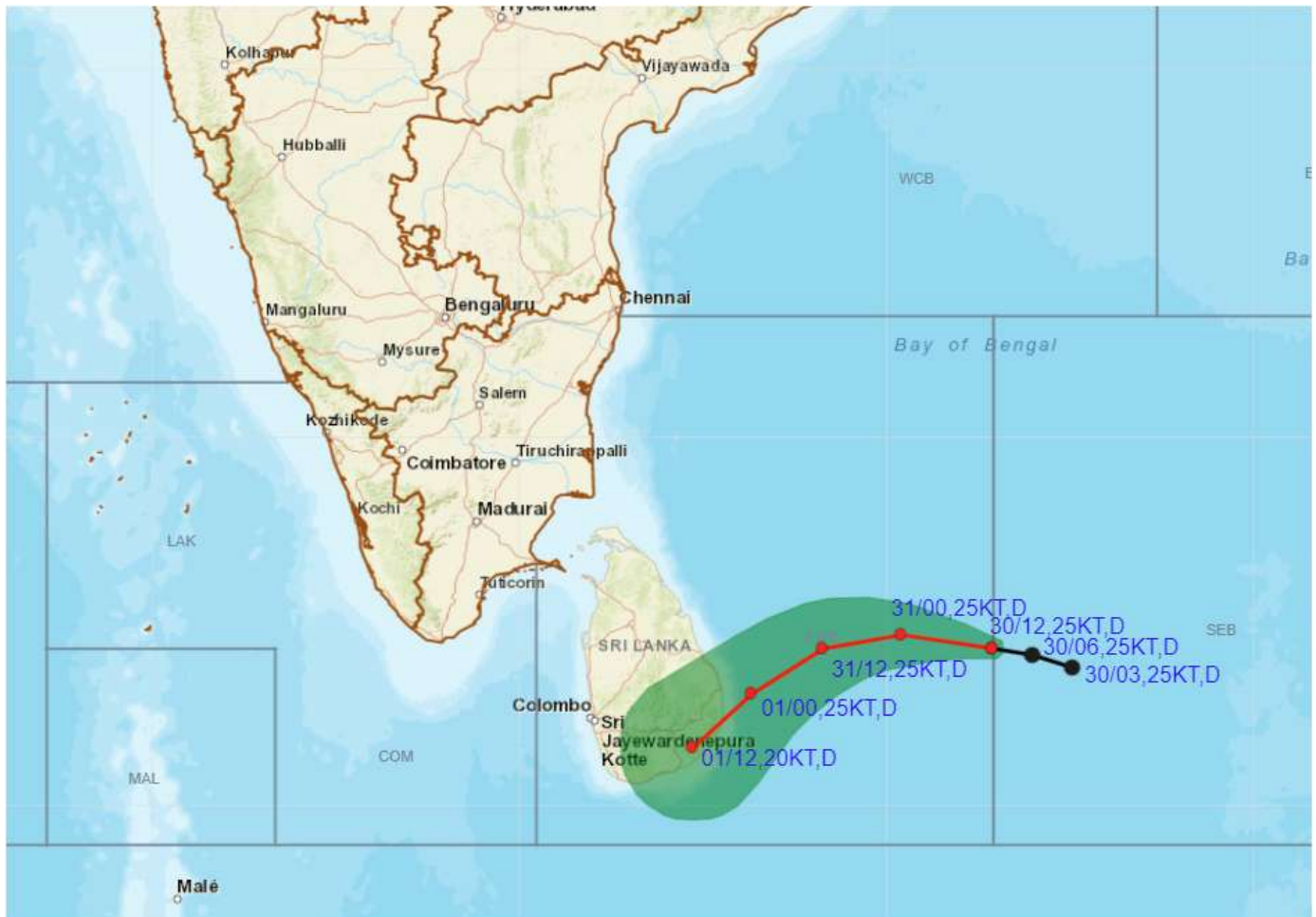
Copy to: ACWC Kolkata/ ACWC Chennai/ CWC Bhubaneswar/CWC Visakhapatnam/MO Port Blair

LEGEND: Heavy Rainfall: 64.5 to 115.5mm, **Very Heavy Rainfall:** 115.6 to 204.4mm **Most Places:** more than 76% of total stations, **Isolated Places:** Less than 25% of total











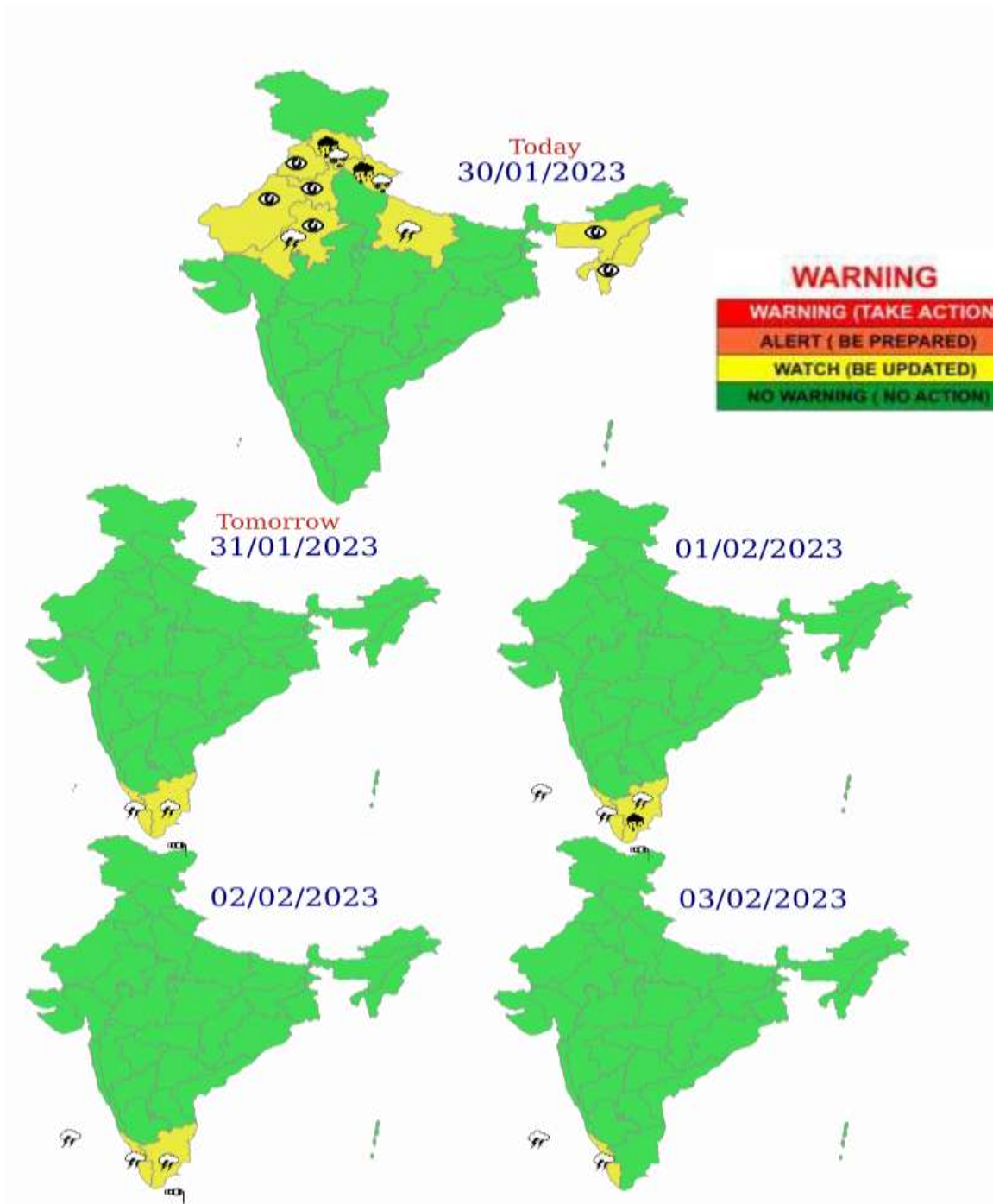
OBSERVED AND FORECAST TRACK OF DEPRESSION OVER SOUTHWEST AND ADJOINING SOUTHEAST BAY OF BENGAL BASED ON 1200 UTC OF 30th JANUARY, 2023.



DATE/TIME IN UTC
 IST=UTC + 0530
 L: LOW PRESSURE AREA
 WML: WELL MARKED LOW PRESSURE AREA
 D: DEPRESSION (17-27 KT)
 DD: DEEP DEPRESSION (28-33 KT)
 CS: CYCLONIC STORM (34-47 KT)
 SCS: SEVERE CYCLONIC STORM (48-63KT)
 VSCS: VERY SEVERE CYCLONIC STORM (64-89 KT)
 ESCS: EXTREMELY SEVERE CYCLONIC STORM (90-119 KT)
 SuCS: SUPER CYCLONIC STORM (≥ 120 KT)

-  LESS THAN 34 KT
-  34-47 KT
-  ≥ 48 KT
-  OBSERVED TRACK
-  FORECAST TRACK
-  CONE OF UNCERTAINTY

Multi hazard Warning Graphics



- | | | | |
|--|--|--|--|
|  Heavy Rain |  Heavy Snow |  Thunderstorm |  Dust Storm |
|  Strong Winds |  Visibility |  Cyclone |  Squall/ Hail |
|  Frost |  Cold Wave |  Heat Wave |  Sea State |

Fishermen warning graphics



Squally WX with wind speed 40-45 kmph gusting to 55 kmph

Squally wind speed 45-55 kmph gusting to 65 kmph

Fishermen are advised not to venture into the marked areas.