



**India Meteorological Department  
(Ministry of Earth Sciences)  
NATIONAL BULLETIN NO. 1 (Land/04/2025)**

**TIME OF ISSUE: 0200 HOURS IST**

**DATED: 07.09.2025**

**FROM: INDIA METEOROLOGICAL DEPARTMENT**

**(FAX NO. 24643965/24699216/24623220)**

**TO: CONTROL ROOM, NDM, MINISTRY OF HOME AFFAIRS (FAX.NO. 23093750)  
CONTROL ROOM NDMA (FAX.NO. 26701729)  
CABINET SECRETARIAT (FAX.NO.23012284, 23018638)  
PS TO HON'BLE MINISTER FOR S & T AND EARTH SCIENCES (FAX NO.23316745)  
SECRETARY, MOES (FAX NO. 24629777)  
H.Q. (INTEGRATED DEFENCE STAFF AND CDS) (FAX NO. 23005137/23005147)  
DIRECTOR GENERAL, DOORDARSHAN (23385843)  
DIRECTOR GENERAL, AIR (23421105, 23421219)  
PIB MOES (FAX NO. 23389042)  
UNI (FAX NO. 23355841)  
D.G. NATIONAL DISASTER RESPONSE FORCE (NDRF) (FAX NO. 26105912, 2436 3260)  
DIRECTOR, PUNCTUALITY, INDIAN RAILWAYS (FAX NO. 23388503)  
CHIEF SECRETARY, GOVT. OF RAJASTHAN (FAX NO. 0141-2227114)  
CHIEF SECRETARY, GOVT. OF GUJARAT (FAX NO. +9179 23250305)  
CHIEF SECRETARY, GOVT. OF MAHARASHTRA (FAX NO. +9122 22028594)**

**Subject: Well Marked Low Pressure area over Southwest Rajasthan and neighbourhood concentrated into a Depression over the same region**

The Well Marked Low Pressure area over Southwest Rajasthan and neighbourhood moved nearly westwards and concentrated into a Depression and lay centred at 2330 hrs IST of yesterday, the 06 September, 2025, over the same region near latitude 25.3°N and longitude 72.2°E, 220 Km southeast of Jaisalmer (Rajasthan) and 330 Km northeast of Bhuj (Gujarat). It is likely to move nearly westwards during next 2-days

**Warnings:**

**(i) Rainfall Warning:**

**Gujarat Region:** Light to moderate rainfall at most places with **heavy to very heavy rainfall and extremely heavy falls ( $\geq 21$  cm)** very likely at isolated places on 07<sup>th</sup> September and heavy rainfall on 08<sup>th</sup> September.

**Saurashtra & Kutch:** Light to moderate rainfall at most places with **heavy to very heavy rainfall and extremely heavy falls ( $\geq 21$  cm)** very likely at isolated places on 07<sup>th</sup> September **very heavy rainfall** on 08<sup>th</sup> September.

**West Rajasthan:** Light to moderate rainfall at most places with **heavy to very heavy rainfall and extremely heavy falls ( $\geq 21$  cm)** very likely at isolated places over southwest Rajasthan on 07<sup>th</sup> September and **very heavy rainfall** on 08<sup>th</sup> September.

**East Rajasthan:** Light to moderate rainfall at most places with **heavy to very heavy rainfall** very likely at isolated places over southeast Rajasthan on 07<sup>th</sup> September and heavy rainfall on 08<sup>th</sup> September.

**Coastal Maharashtra:** Light to moderate rainfall at most places with **heavy to very heavy rainfall** very likely at isolated places on 07<sup>th</sup> September.

**Madhya Maharashtra:** Light to moderate rainfall at most places with **heavy to very heavy rainfall** very likely at isolated places on 07<sup>th</sup> September.

**(ii) Wind Warnings:** Squally wind speed reaching 40-50 kmph gusting to 60 kmph is likely over south Rajasthan and Gujarat state and adjoining areas of northeast Arabian Sea during next 2 days and decrease thereafter.

**(iii) Impact Expected and Action Suggested due to very heavy/extremely heavy rainfall and squally winds over south Rajasthan and Gujarat state**

**Impact expected:**

- ❖ Heavy rainfall may damage plantation, horticulture and standing crops.
- ❖ Partial damage to vulnerable structures due to heavy rain.
- ❖ Minor damage to kutchha houses/walls, huts and roads due to heavy rain.
- ❖ Road and rail traffic may be affected due to heavy rain.
- ❖ There could be localised landslides, mudslides, landslips, water logging, inundation and flooding over low lying areas.
- ❖ Occasional reduction in visibility due to heavy rainfall.
- ❖ Helicopter services may get affected.

**Action suggested:**

- ❖ People are advised to keep a watch on the weather for worsening conditions and be ready to move to safer places accordingly.
- ❖ Take safe shelters; do not take shelter under trees, as there could be lightning.
- ❖ In case of expected lightning, unplug electrical/ electronic appliances, immediately, get out of water bodies and keep away from all the objects that conduct electricity.
- ❖ Tourism and recreational activities to be regulated.
- ❖ Helicopter services to be regulated.

**Next bulletin will be issued at 0830 hrs IST of today, the 07<sup>th</sup> September, 2025.**

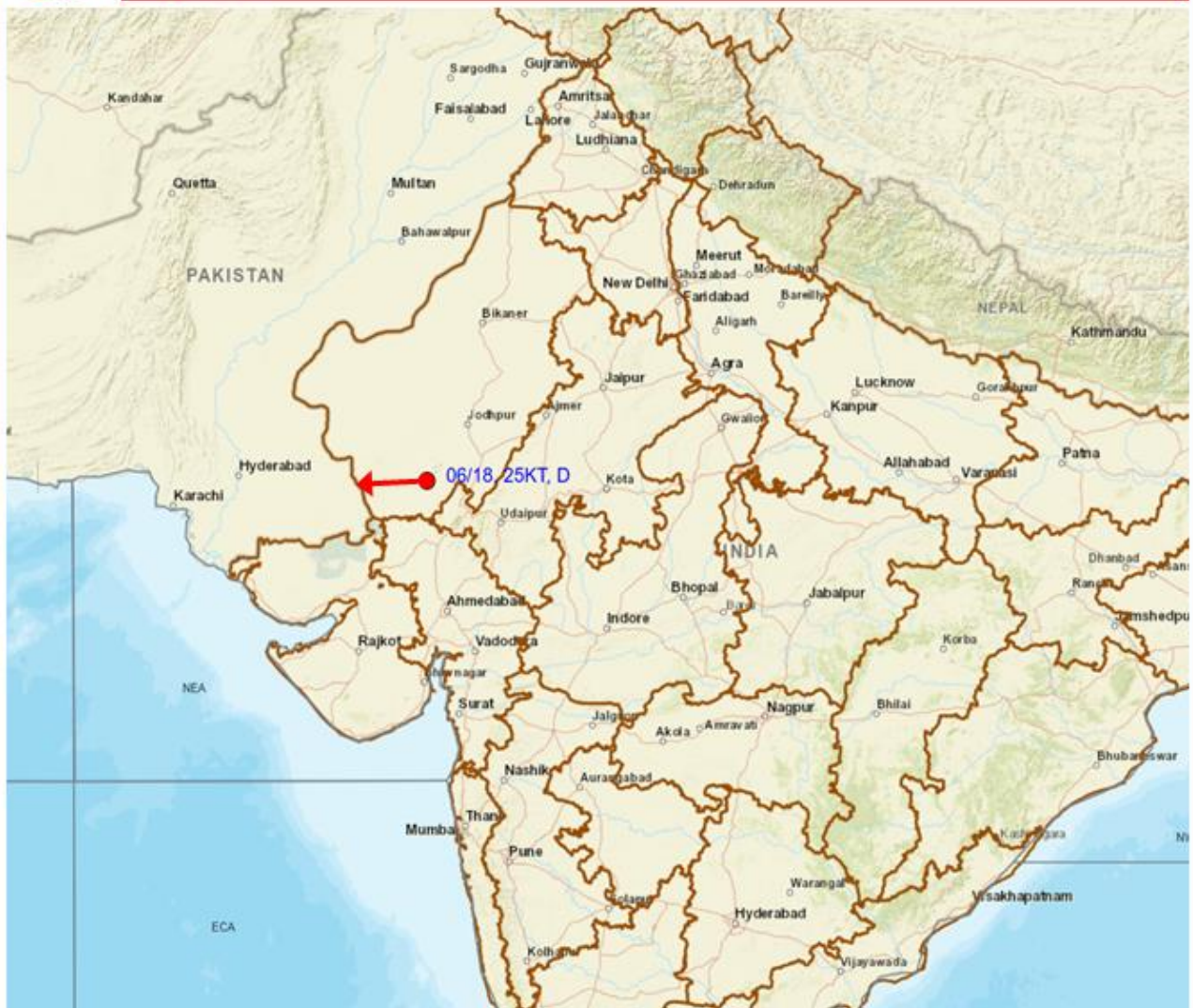
**(Shashi Kant)**

**Scientist-D, IMD, New Delhi**

*Copy to: Meteorological Centres/Regional Meteorological Centres- Ahmedabad, Jaipur and Mumbai.*



**OBSERVED AND FORECAST TRACK OF DEPRESSION OVER SOUTH WEST  
RAJASTHAN & NEIGHBORHOOD BASED ON 1800 UTC (2330 IST) OF 06<sup>th</sup>  
SEP, 2025.**



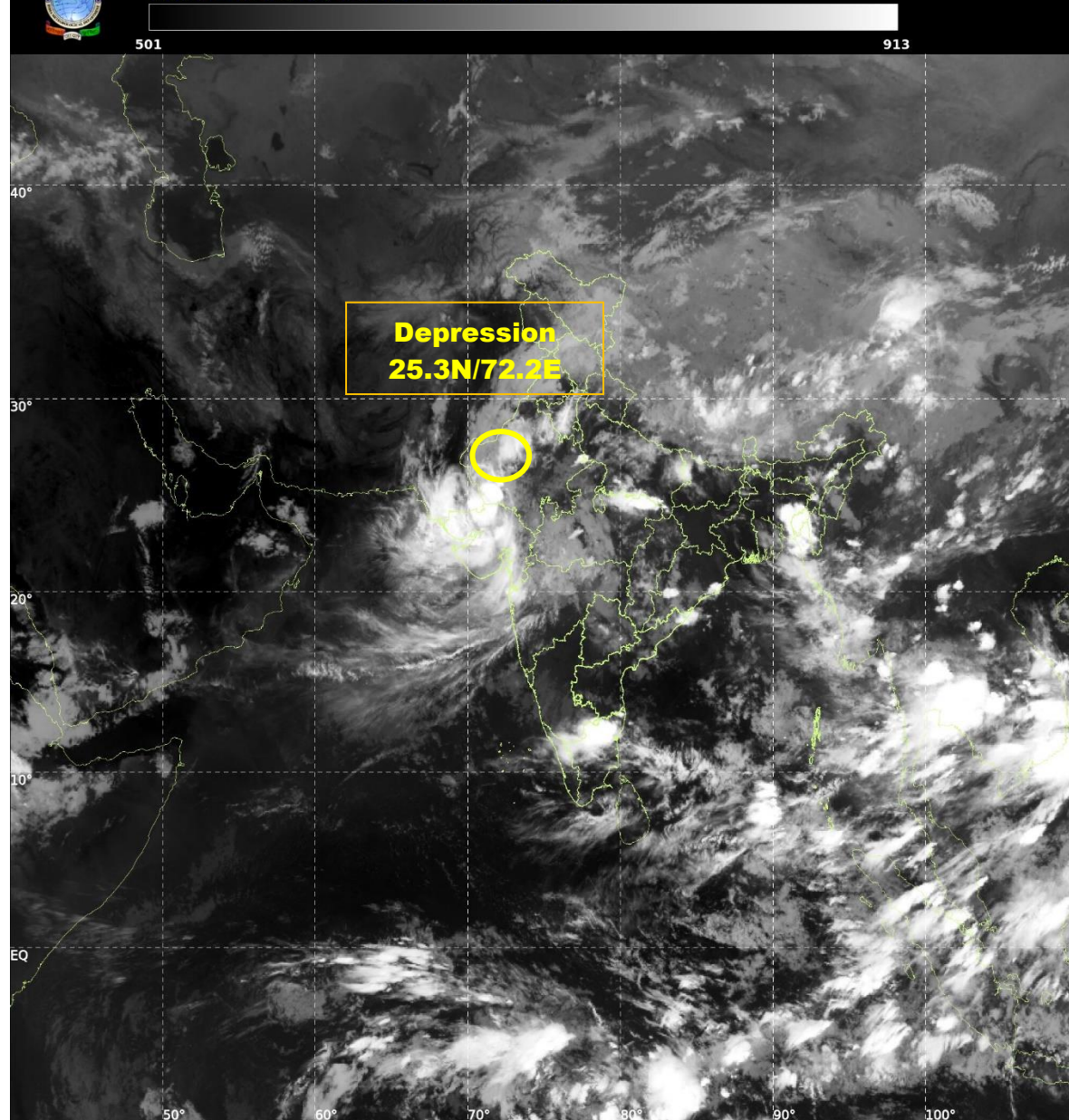
DATE/TIME IN UTC  
IST=UTC + 0530  
L: LOW PRESSURE AREA  
WML: WELL MARKED LOW PRESSURE AREA  
D: DEPRESSION (17-27 KT)  
DD: DEEP DEPRESSION (28-33 KT)  
CS: CYCLONIC STORM (34-47 KT)  
SCS: SEVERE CYCLONIC STORM (48-63KT)  
VSCS: VERY SEVERE CYCLONIC STORM (64-89 KT)  
ESCS: EXTREMELY SEVERE CYCLONIC STORM (90-119 KT)  
SuCS: SUPER CYCLONIC STORM ( $\geq$  120 KT)

● LESS THAN 34 KT  
⚡ 34-47 KT  
⚡  $\geq$  48 KT  
— OBSERVED TRACK  
— FORECAST TRACK  
▲ CONE OF UNCERTAINTY

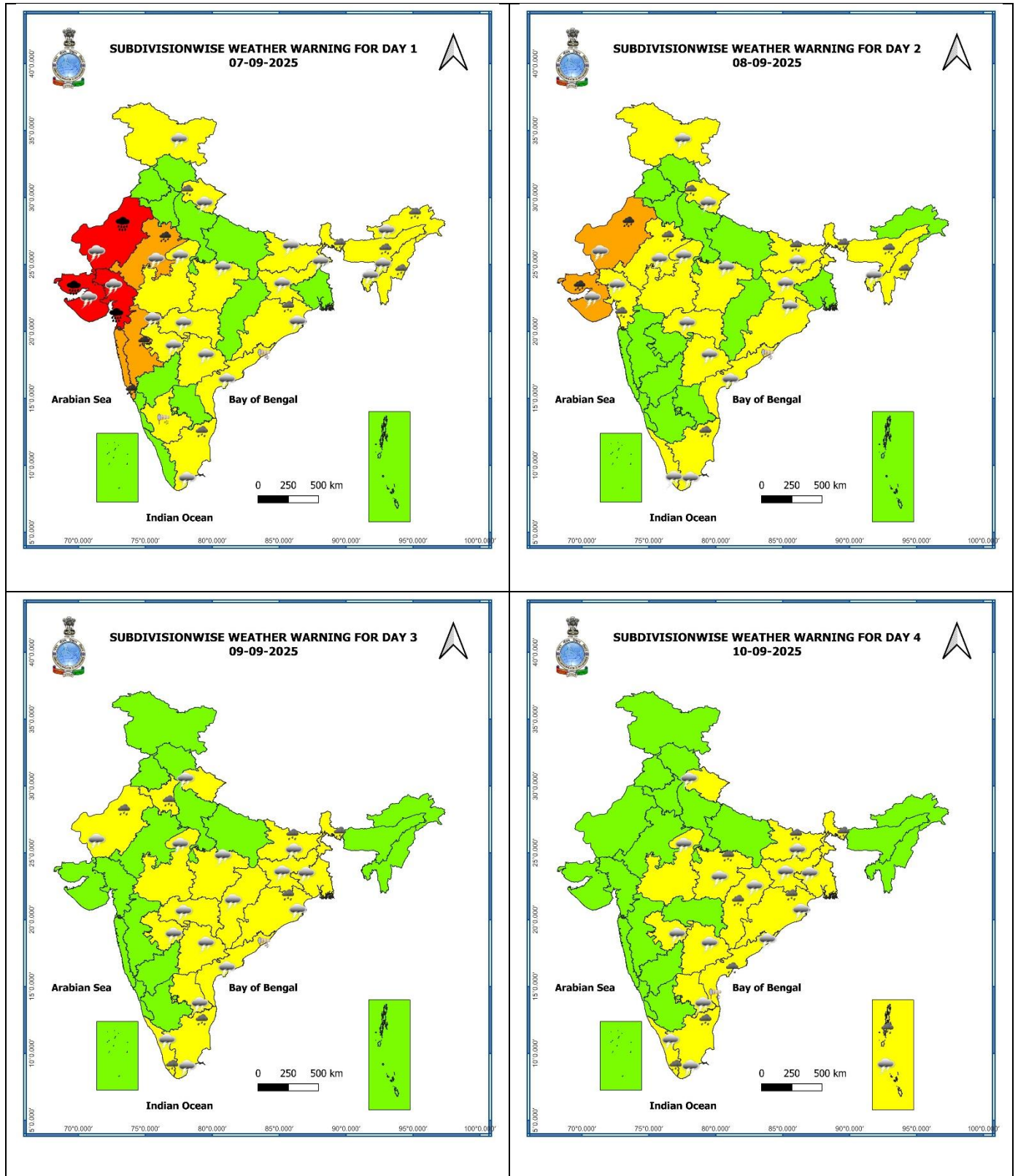


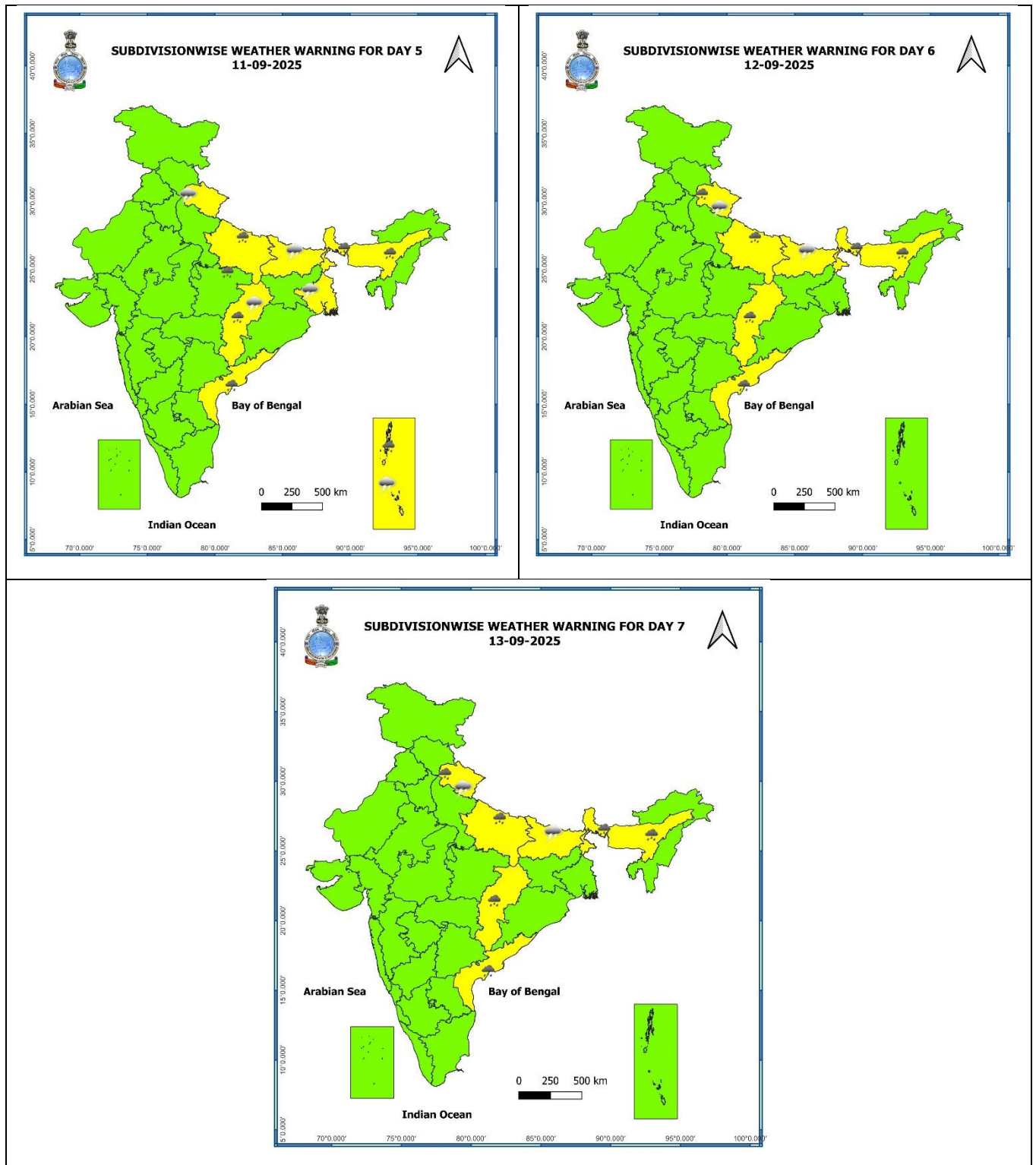


INSAT-3DS IMG, Thermal Infrared1 Count @ 10.83  $\mu\text{m}$   
GMT:06-09-2025/(1930-1957) IST:07-09-2025/(0100-0127)  
L1C MERCATOR (LINEAR STRETCH: 1%)



## Warning Graphics





- Action may be taken based on **ORANGE** AND **RED** COLOUR warnings.
- Vulnerable regions likely urban and hilly areas action may be initiated for heavy rainfall warning.
- As the lead period increases forecast accuracy decreases.



# Flash Flood Guidance

## 24 hours Outlook for the Flash Flood Risk (FFR) till 1730 IST of 07-09-2025:

Moderate to High flash flood risk likely over few watersheds & neighbourhoods of following Met Sub-divisions during next 24 hours.

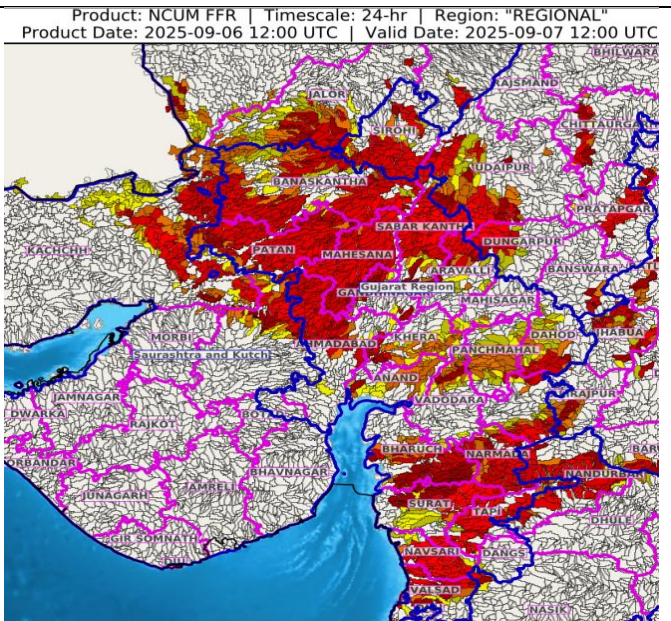
**East Rajasthan** - Banswara, Dungarpur, Sirohi and Udaipur districts.

**West Rajasthan** - Barmer and Jalor districts.

**Gujarat Region** - Dadar & Nagar Haveli, Daman, Ahmadabad, Anand, Aravalli, Banaskantha, Bharuch, Chhota Udaipur, Dahod, Dangs, Gandhinagar, Khera, Mahesana, Mahisagar, Narmada, Navsari, Panchmahal, Patan, Sabar Kantha, Surat, Tapi, Vadodara and Valsad districts.

**Saurashtra & Kutch** - Surendranagar, Morbi and Kachchh districts.

Surface runoff/ Inundation may occur at some fully saturated soils & low-lying areas over Area of Concern (AoC) as shown in map due to expected rainfall occurrence in next 24 hours.



### Flash Flood Threat

**High Threat (Take Action)**

**Moderate threat (Be Prepared)**

**Low Threat (Be Updated)**

### Flash Flood Risk

**High Risk (Take Action)**

**Moderate Risk (Be Prepared)**

**Low Risk (Be Updated)**