



**India Meteorological Department  
(Ministry of Earth Sciences)**

**BULLETIN NO. : 22 (BOB/07/2022)**

**TIME OF ISSUE: 0830 HOURS IST**

**DATED: 23.08.2022**

**FROM: INDIA METEOROLOGICAL DEPARTMENT (FAX NO. 24643965/24699216/24623220)**

**TO: CONTROL ROOM, NDM, MINISTRY OF HOME AFFAIRS (FAX.NO. 23093750)**

**CONTROL ROOM NDMA (FAX.NO. 26701729)**

**CABINET SECRETARIAT (FAX.NO.23012284, 23018638)**

**PS TO HON'BLE MINISTER FOR S & T AND EARTH SCIENCES (FAX NO.23316745)**

**SECRETARY, MOES (FAX NO. 24629777)**

**H.Q. (INTEGRATED DEFENCE STAFF AND CDS) (FAX NO. 23005137/23005147)**

**DIRECTOR GENERAL, DOORDARSHAN (23385843)**

**DIRECTOR GENERAL, AIR (23421105, 23421219)**

**PIB MOES (FAX NO. 23389042)**

**UNI (FAX NO. 23355841)**

**D.G. NATIONAL DISASTER RESPONSE FORCE (NDRF) (FAX NO. 26105912, 2436 3260)**

**DIRECTOR, PUNCTUALITY, INDIAN RAILWAYS (FAX NO. 23388503)**

**CHIEF SECRETARY, GOVT. OF MADHYA PRADESH (FAX NO. 755-2441076)**

**CHIEF SECRETARY, GOVT. OF MAHARASHTRA (FAX NO. 022- 22028594)**

**CHIEF SECRETARY, GOVT. OF RAJASTHAN (FAX NO. 0141-2227114)**

**CHIEF SECRETARY, GOVT. OF GUJARAT (FAX NO. 079-23250305)**

**CHIEF SECRETARY, GOVT. OF HARYANA (NA)**

**CHIEF SECRETARY, GOVT. OF DELHI (011-23392102)**

**Sub: Depression over East Rajasthan and adjoining Northwest Madhya Pradesh**

The depression over East Rajasthan and adjoining Northwest Madhya Pradesh moved nearly northwestwards during past 06 hours with a speed of 08 kmph and lay centered at 0530 hrs IST of 23rd August, 2022 over the same region near latitude 24.8°N and longitude 76.2°E, about 50 km southeast of Kota (Rajasthan), 250 km east-northeast of Udaipur (Rajasthan) and 110 km north-northwest of Guna (Madhya Pradesh).

It is very likely to continue to move nearly west-northwestwards and weaken into a Well Marked Low Pressure Area during next 06 hours.

**Warnings:**

**Rainfall:**

**23<sup>rd</sup> August:** Rainfall at most places with **heavy to very heavy rainfall** at isolated places very likely over south Rajasthan, North Gujarat & southwest Madhya Pradesh and **heavy rainfall** at isolated places likely over and South Gujarat.

**24<sup>th</sup> August:** Rainfall at most places with **heavy rainfall** at isolated places very likely over Southwest Rajasthan and adjoining Kutch area.

## Wind:

- **Squally wind speed reaching 30-40 gusting to 50 kmph** very likely to prevail over South & adjoining Central Rajasthan and West Madhya Pradesh during next 12 hours.

**Damage expected and action suggested over south Rajasthan, southwest Madhya Pradesh, northern parts of Gujarat Region due to very heavy rainfall on 23rd August, 2022.**

### ➤ **Impact Expected**

- Localized Flooding of roads, water logging in low lying areas and closure of underpasses mainly in urban areas of the above region.
- Occasional reduction in visibility due to heavy rainfall.
- Disruption of traffic in major cities due to water logging in roads leading to increased travel time.
- Minor damage to kutchha roads.
- Possibilities of damage to vulnerable structure.
- Localized Landslides/Mudslides
- Damage to horticulture and standing crops in some areas due to inundation.
- It may lead to riverine flooding in some river catchments (for riverine flooding please visit Web page of CWC)

### ➤ **Action Suggested**

- Check for traffic congestion on your route before leaving for your destination.
- Follow any traffic advisories that are issued in this regard.
- Avoid going to areas that face the water logging problems often.
- Avoid staying in vulnerable structure.

**Next Bulletin will be issued at 1130 hours IST of 23<sup>rd</sup> August, 2022.**

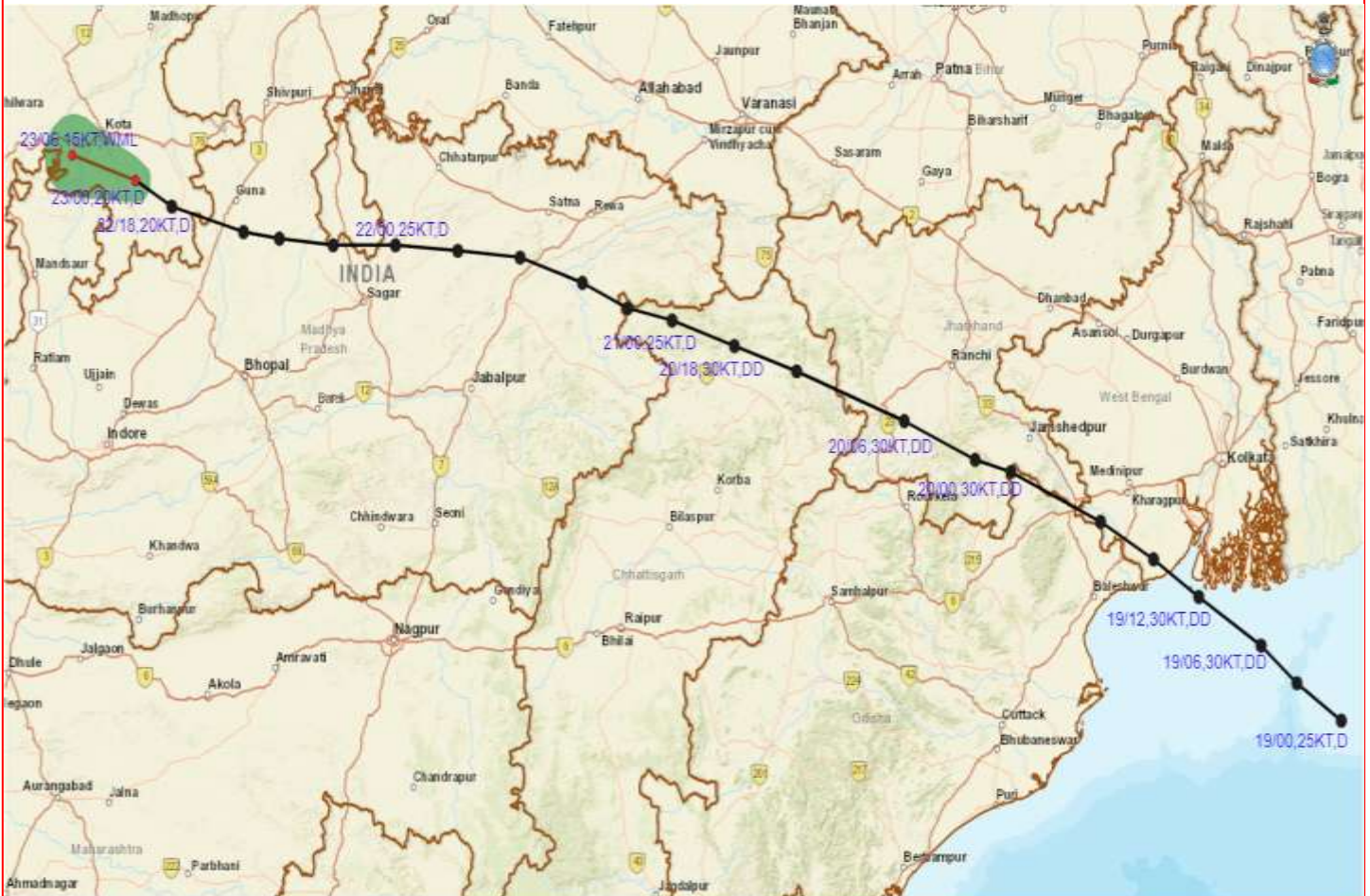
**(Shobhit Katiyar)**  
**Scientist C, Cyclone Warning Division, New Delhi**

**Copy to: ACWC Mumbai/ ACWC Kolkata/ ACWC Chennai/ CWC Bhubaneswar/CWCVisakhapatnam/ / MO Port Blair/MC Raipur/MC Bhopal/MC Hyderabad/RMC Nagpur/RMC New Delhi/MC Jaipur**

**LEGEND: Heavy Rainfall:** 64.5 to 115.5mm, **Very Heavy Rainfall:** 115.6 to 204.4mm **Extremely Heavy Rainfall:** more than 204.5 mm, **Most Places:** more than 76% of total stations, **Many Places:** 50% to 75% of total stations, **Isolated Places:** Less than 25% of total stations

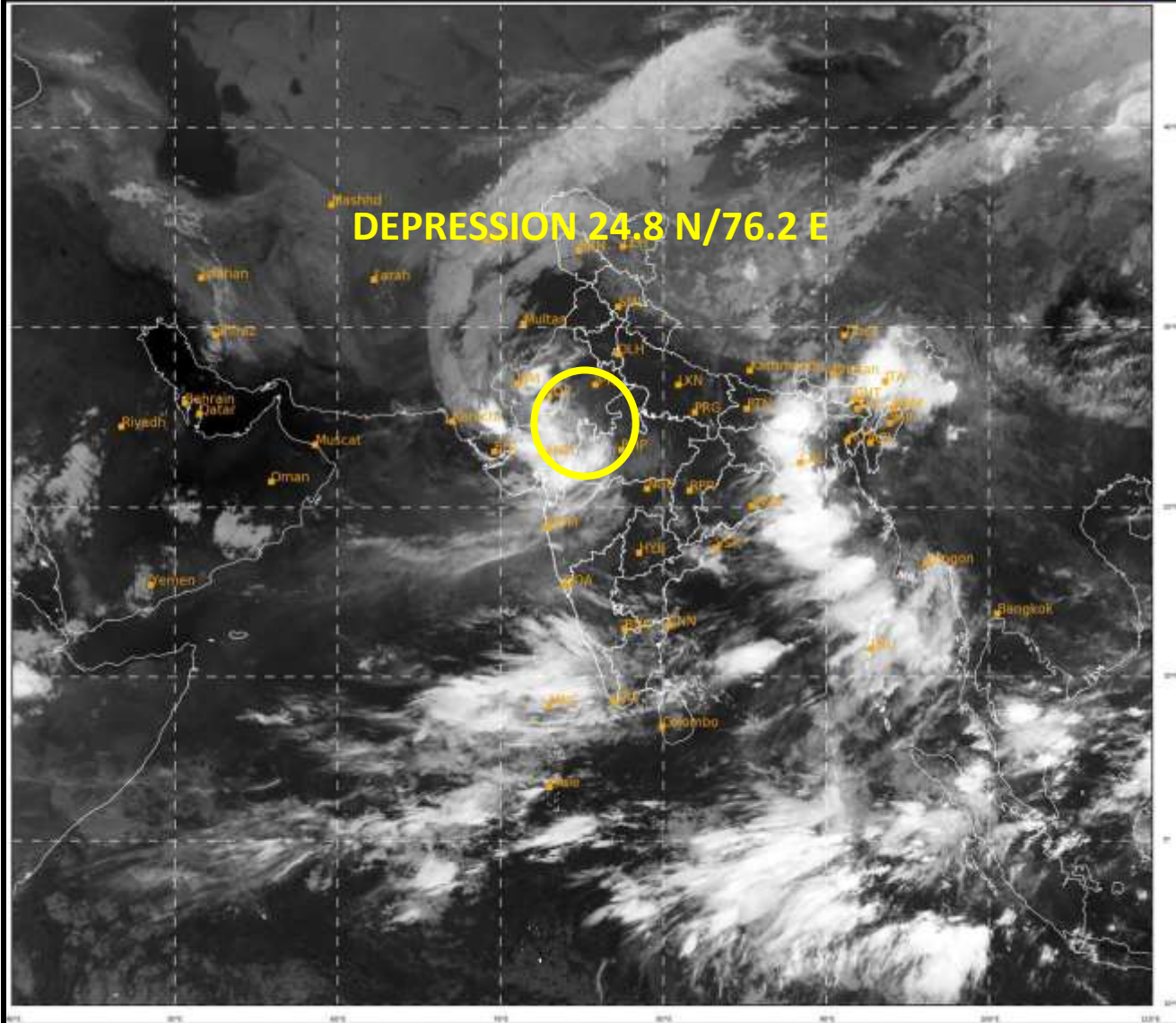


**OBSERVED AND FORECAST TRACK ALONGWITH CONE OF UNCERTAINTY OF DEPRESSION OVER EAST RAJASTHAN AND ADJOINING NORTHWEST MADHYA PRADESH BASED ON 0000 UTC OF 23<sup>rd</sup> AUGUST, 2022**



DATE/TIME IN UTC  
 IST=UTC + 0530  
 L: LOW PRESSURE AREA  
 WML: WELL MARKED LOW PRESSURE AREA  
 D: DEPRESSION (17-27 KT)  
 DD: DEEP DEPRESSION (28-33 KT)  
 CS: CYCLONIC STORM (34-47 KT)  
 SCS: SEVERE CYCLONIC STORM (48-63KT)  
 VSCS: VERY SEVERE CYCLONIC STORM (64-89 KT)  
 ESCS: EXTREMELY SEVERE CYCLONIC STORM (90-119 KT)  
 SuCS: SUPER CYCLONIC STORM (≥ 120 KT)

- LESS THAN 34 KT
- 34-47 KT
- ≥ 48 KT
- OBSERVED TRACK
- FORECAST TRACK
- CONE OF UNCERTAINTY



483

939



IMD, DELHI



