



**India Meteorological Department  
(Ministry of Earth Sciences)**

**National Bulletin No. 2 (BOB/01/2026)**

**TIME OF ISSUE: 1430 HOURS IST**

**DATED: 07.01.2026**

**FROM: INDIA METEOROLOGICAL DEPARTMENT (FAX NO. 24643965/24699216/24623220)**

**TO: CONTROL ROOM, NDM, MINISTRY OF HOME AFFAIRS (FAX.NO. 23093750)**

**CONTROL ROOM NDMA (FAX.NO. 26701729)**

**CABINET SECRETARIAT (FAX.NO.23012284, 23018638)**

**PS TO HON'BLE MINISTER FOR S & T AND EARTH SCIENCES (FAX NO.23316745)**

**SECRETARY, MOES (FAX NO. 24629777)**

**H.Q. (INTEGRATED DEFENCE STAFF AND CDS) (FAX NO. 23005137/23005147)**

**DIRECTOR GENERAL, DOORDARSHAN (23385843)**

**DIRECTOR GENERAL, AIR (23421105, 23421219)**

**PIB MOES (FAX NO. 23389042)**

**UNI (FAX NO. 23355841)**

**D.G. NATIONAL DISASTER RESPONSE FORCE (NDRF) (FAX NO. 26105912, 2436 3260)**

**DIRECTOR, PUNCTUALITY, INDIAN RAILWAYS (FAX NO. 23388503)**

**CHIEF SECRETARY, TAMIL NADU (FAX NO. 044-25672304)**

**CHIEF SECRETARY, PUDUCHERRY (FAX NO. 0413-2334145)**

**CHIEF SECRETARY, ANDAMAN & NICOBAR ISLANDS (FAX NO. 03192-232656)**

**CHIEF SECRETARY, KERALA (FAX NO. 0471-2327176)**

**CHIEF SECRETARY, ANDHRA PRADESH (FAX NO. 0863-2441029)**

**CHIEF SECRETARY, ODISHA (FAX NO. 0674-2536660)**

**CHIEF SECRETARY, WEST BENGAL (FAX NO. 033-22144328)**

**Subject: Depression over southeast Bay of Bengal and adjoining East Equatorial Indian Ocean**

The depression over southeast **Bay of Bengal and adjoining East Equatorial Indian Ocean** moved nearly west-northwestwards with a speed of 23 kmph during past 3 hours and lay centred at 1130 hours IST of today, the 7<sup>th</sup> January, 2026 over the same region, near latitude 4.9°N and longitude 87.6°E, about 680 km east-southeast of Pottuvil (Sri Lanka), 720 km east-southeast of Batticaloa (Sri Lanka), 810 km east-southeast of Trincomalee (Sri Lanka), 1090 km southeast of Karaikal (Puducherry) and 1220 km south-southeast of Chennai (Tamil Nadu).

It is likely to intensify further into a deep depression during next 24 hours. It is very likely to move west-northwestwards initially towards southwest Bay of Bengal during next 48 hours.

**Rainfall Warning:**

- ❖ **Tamil Nadu, Puducherry and Karaikal:** Light to moderate rainfall at many places with heavy rainfall at isolated places is very likely on 8<sup>th</sup> January, 2026. The activity would gradually increase becoming light to moderate rainfall at most places with heavy to very heavy rainfall at isolated places on 9<sup>th</sup> and 10<sup>th</sup> January, 2026. It would decrease thereafter becoming light

to moderate rainfall at many places with heavy rainfall at isolated places on 11<sup>th</sup> January, 2026.

- ❖ **Kerala and Mahe:** Light to moderate rainfall at many places with **heavy rainfall** at isolated places is very likely on 10<sup>th</sup> January.

## **(ii) Wind Warning:**

### **(a) Southeast Bay of Bengal and adjoining East Equatorial Indian Ocean:**

Squally weather with wind speed reaching 40-50 gusting to 60 kmph is very likely to prevail on 7<sup>th</sup> & 8<sup>th</sup> January, 2026 and gradually decrease thereafter.

### **(b) Southwest Bay of Bengal and adjoining East Equatorial Indian Ocean:**

Squally weather with wind speed reaching 40 - 50 gusting to 60 kmph is very likely to prevail till morning of 8<sup>th</sup> January. Thereafter, the winds would gradually increase and squally winds with speed reaching 50-60 gusting to 70 kmph are likely to prevail during 8<sup>th</sup> morning to 9<sup>th</sup> morning. It would gradually decrease then, becoming 40-50 gusting to 60 kmph by 9<sup>th</sup> evening.

### **(c) Along & off Sri Lanka coast, Gulf of Mannar and adjoining Comorin Area:**

Squally weather with wind speed reaching 35-45 gusting to 55 kmph is very likely to prevail on 7<sup>th</sup> January. It would gradually increase and squally winds speed reaching 40-50 gusting to 60 kmph are likely to prevail from 8<sup>th</sup> morning to 9<sup>th</sup> evening and gradually decrease thereafter.

### **(d) Along & off Tamil Nadu - Puducherry coasts**

Squally weather with wind speed reaching 35-45 gusting to 55 kmph is very likely to prevail along and off South Tamil Nadu coast on 8<sup>th</sup> January and 40 – 50 gusting to 60 kmph on 9<sup>th</sup> January. It would gradually decrease from 10<sup>th</sup> January.

Squally weather with wind speed reaching 35-45 gusting to 55 kmph is very likely to prevail along and off North Tamil Nadu & Puducherry coasts on 9<sup>th</sup> & 10<sup>th</sup> January and decrease thereafter.

## **(iii) Sea Condition:**

Sea condition is very likely to be rough to very rough over most parts of southeast Bay of Bengal & adjoining East Equatorial Indian Ocea on 7<sup>th</sup> & 8<sup>th</sup> January, southwest Bay of Bengal during 7<sup>th</sup> to 10<sup>th</sup> January, along & off Sri Lanka coast, Gulf of Mannar and adjoining Comorin during 8<sup>th</sup> to 10<sup>th</sup> January, along & off Tamil Nadu-Puducherry coasts during 8<sup>th</sup> and 10<sup>th</sup> January and improve gradually thereafter.

## **(iv) Fishermen Warning:**

Fishermen are advised not to venture into southeast Bay of Bengal & adjoining East Equatorial Indian Ocea on 7<sup>th</sup> & 8<sup>th</sup> January; southwest Bay of Bengal during 7<sup>th</sup> to 10<sup>th</sup> January; along & off Sri Lanka coast, Gulf of Mannar and adjoining Comorin, South Tamil Nadu coast during 8<sup>th</sup> to 10<sup>th</sup> January; along & off North Tamil Nadu-Puducherry coast during 9<sup>th</sup> and 10<sup>th</sup> January.

## **(v) Impact Expected over coastal Tamil Nadu-Puducherry and Karaikal due to heavy rainfall**

- ❖ Localized Flooding of roads, water logging in low lying areas and closure of underpasses mainly in urban areas of the above region.
- ❖ Occasional reduction in visibility due to heavy rainfall.

- ❖ Disruption of traffic in city areas and roadways due to water logging in roads and poor visibility due to heavy rain leading to increased travel time and incidents
- ❖ Likely disruption of marine and inland water transportation like small boats and trawlers.
- ❖ Damage to horticulture and standing crops in some areas due to inundation and wind.

**(vi) Action Suggested for coastal Tamil Nadu-Puducherry and Karaikal**

- Judicious regulation of onshore/offshore, Port and maritime activities
- Judicious regulation of tourism activities in coastal areas.
- Judicious regulation of surface transports including railways and roadways.
- Avoid going to areas that face the water logging problems often.

**Next bulletin will be issued at 2030 hours IST of today, the 7<sup>th</sup> January, 2026.**

**(Monica Sharma)**  
**Scientist-E, RSMC & IMD, New Delhi**

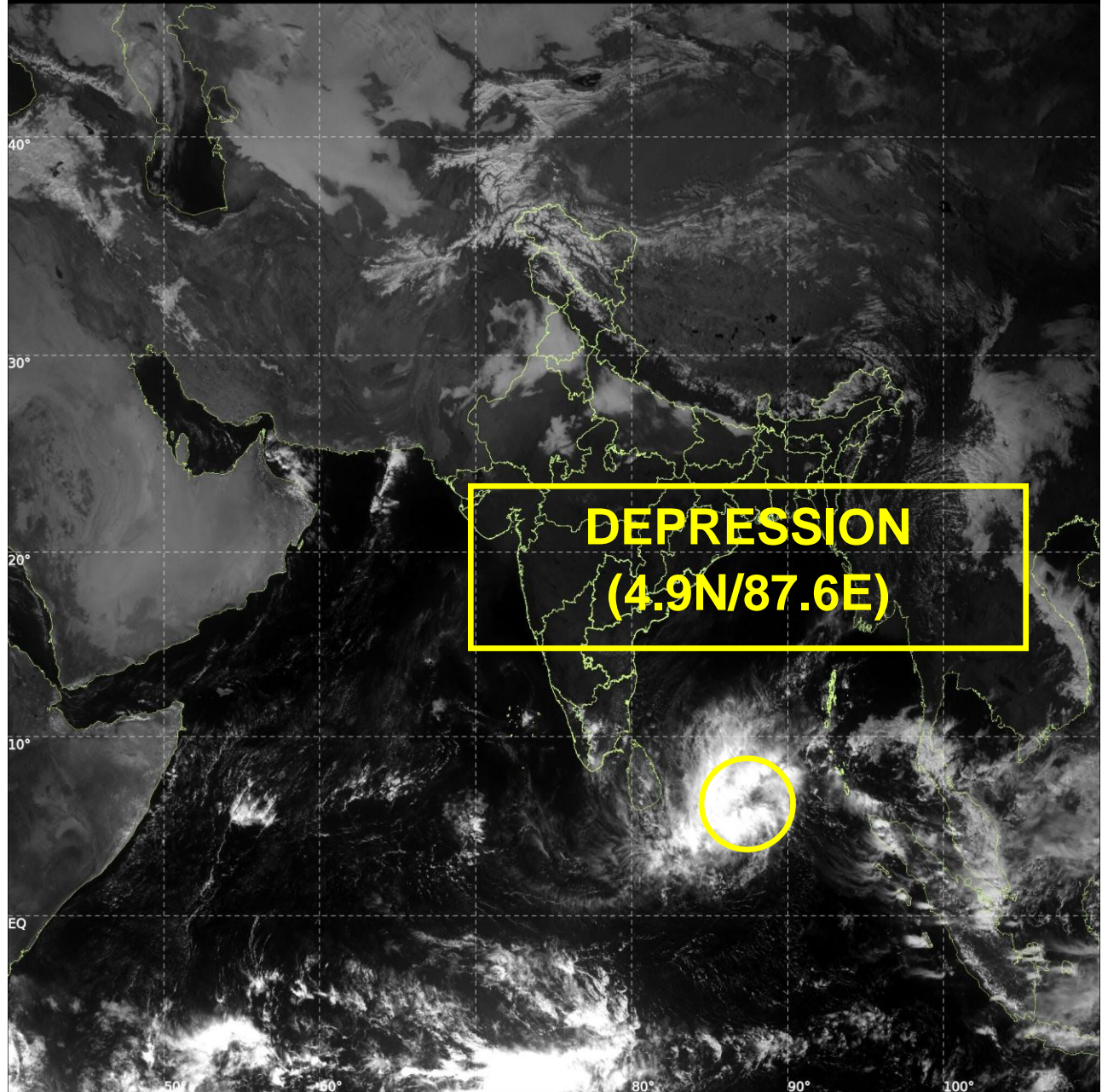
*Copy to: ACWC Kolkata/ACWC Chennai/CWC Bhubaneswar/CWC Vishakhapatnam/CWC Thiruvananthapuram/  
Meteorological Centre Vijaya Puram/ and Meteorological Centre Amaravati/*



INSAT-3DS IMG, Visible Count @ 0.65  $\mu\text{m}$   
GMT:07-01-2026/(0800-0827) IST:07-01-2026/(1330-1357)  
L1C MERCATOR (LINEAR STRETCH: 0.5%)

67

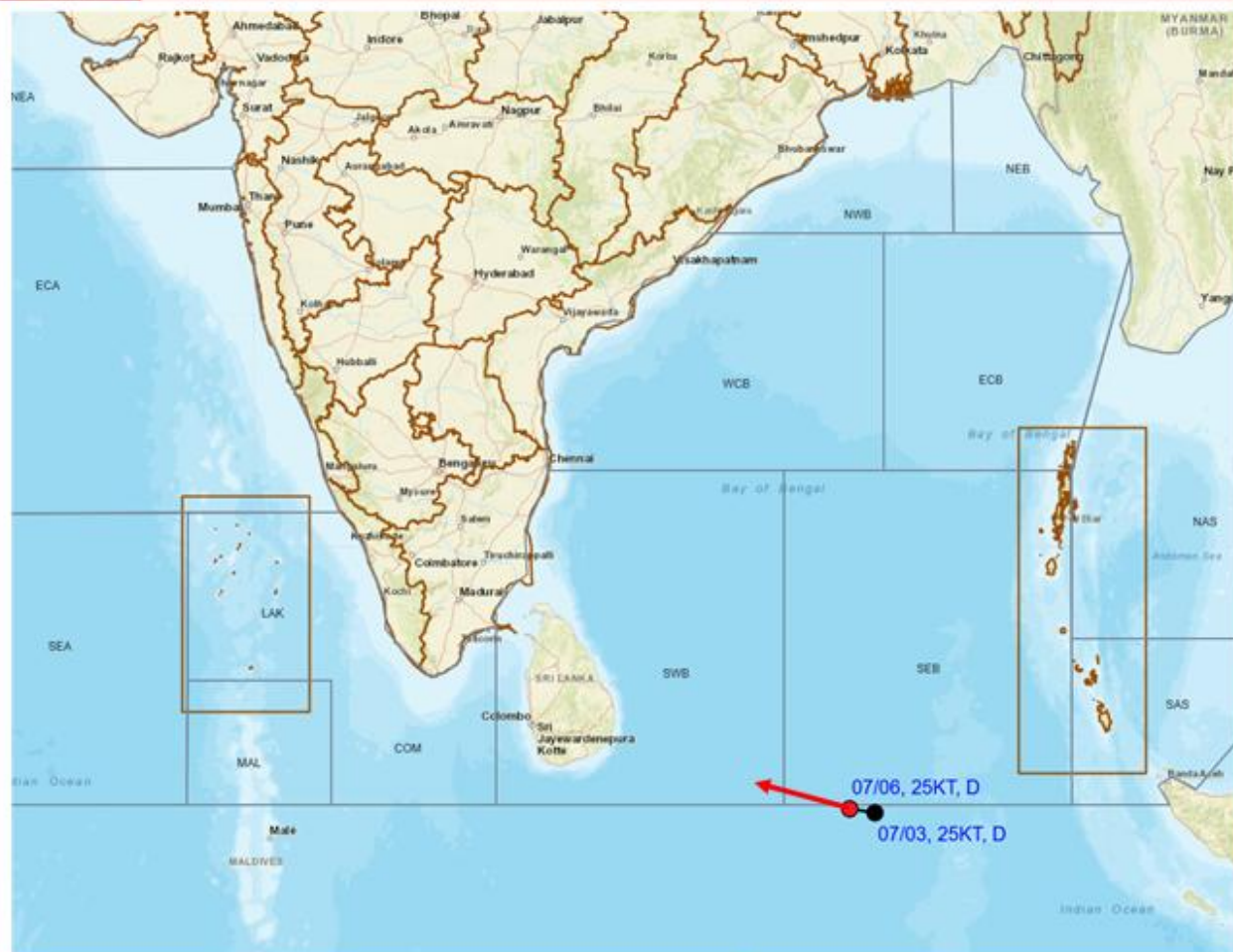
389







**OBSERVED AND FORECAST TRACK OF DEPRESSION OVER SOUTHEAST BAY OF BENGAL AND ADJOINING EAST EQUATORIAL INDIAN OCEAN BASED ON 0600 UTC (1130 Hrs. IST) OF 7<sup>TH</sup> JANUARY 2026**



DATE/TIME IN UTC

IST=UTC + 0530

L: LOW PRESSURE AREA

WML: WELL MARKED LOW PRESSURE AREA

D: DEPRESSION (17-27 KT)

DD: DEEP DEPRESSION (28-33 KT)

CS: CYCLONIC STORM (34-47 KT)

SCS: SEVERE CYCLONIC STORM (48-63KT)

VSCS: VERY SEVERE CYCLONIC STORM (64-89 KT)

ESCS: EXTREMELY SEVERE CYCLONIC STORM (90-119 KT)

SuCS: SUPER CYCLONIC STORM (≥ 120 KT)

● LESS THAN 34 KT

○ 34-47 KT

○ ≥ 48 KT

— OBSERVED TRACK

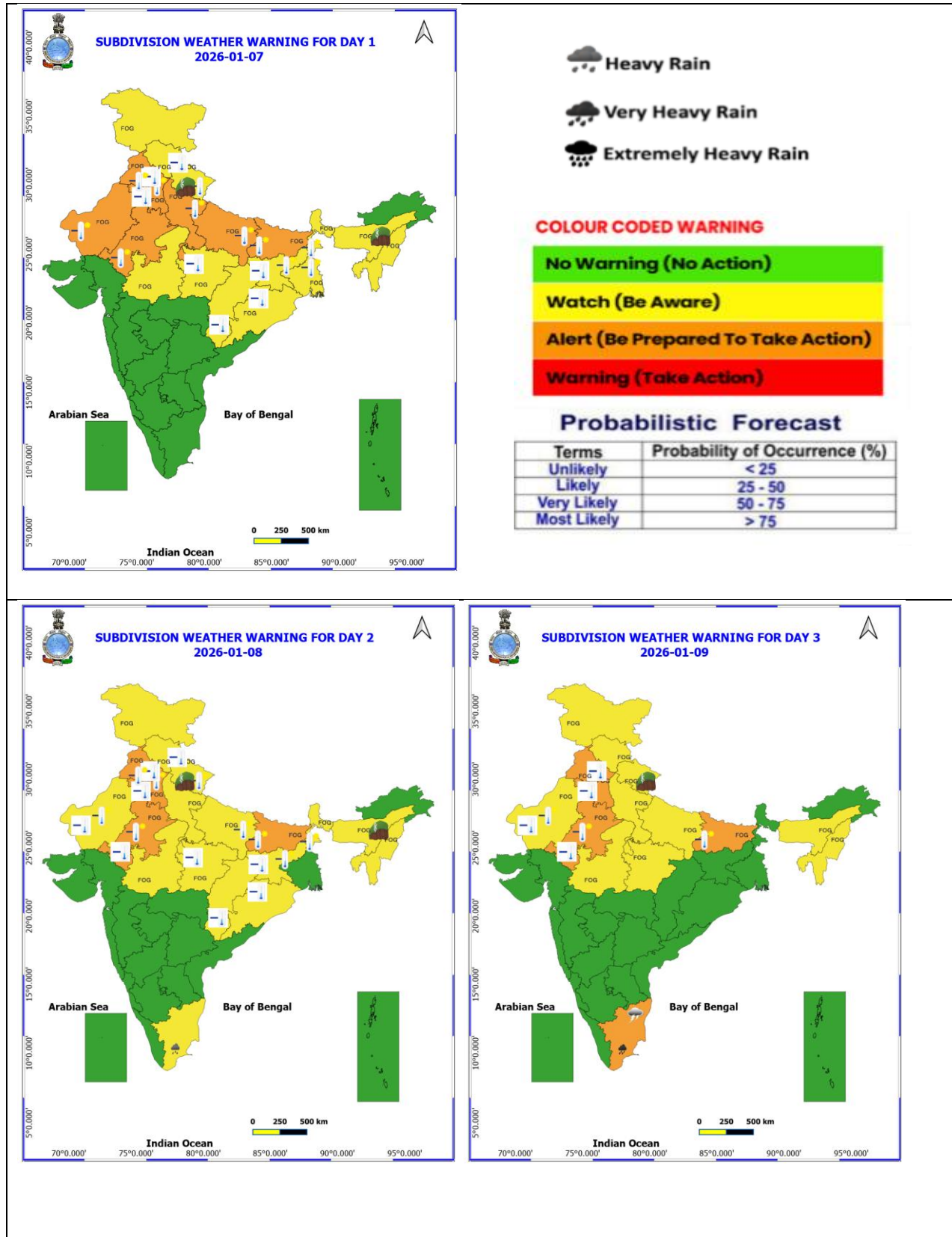
— FORECAST TRACK

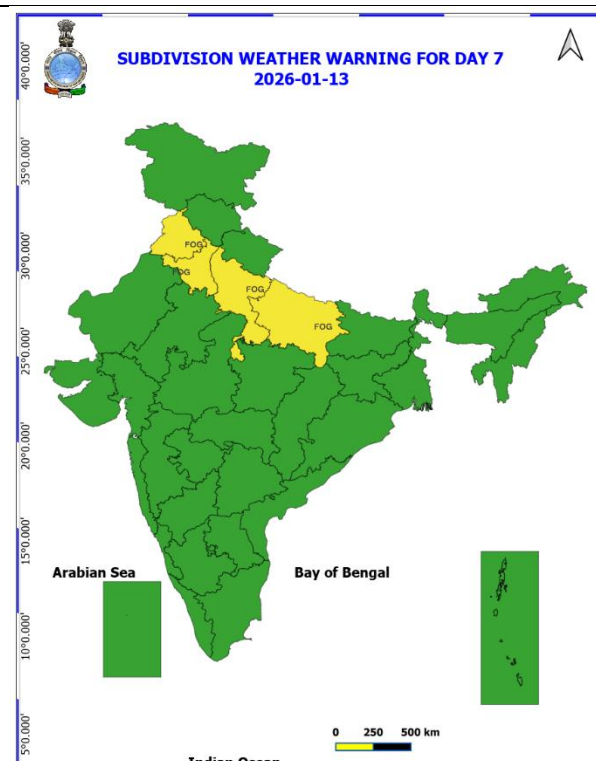
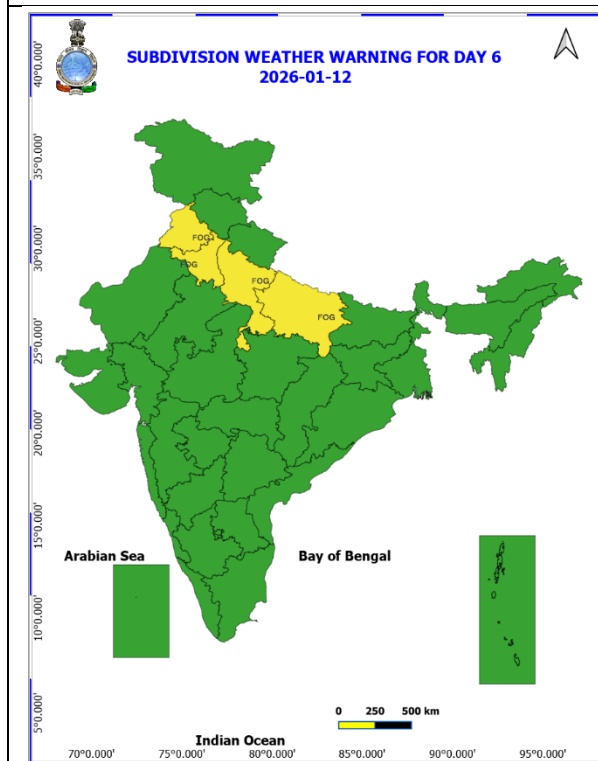
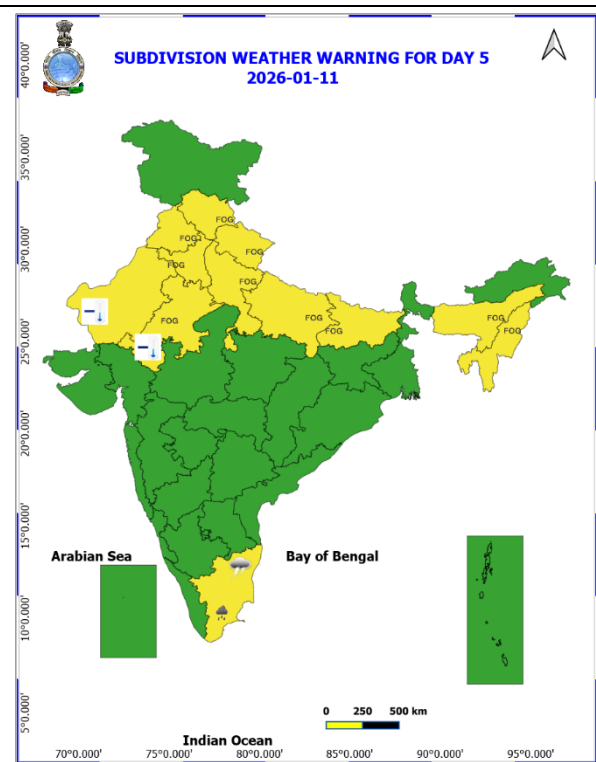
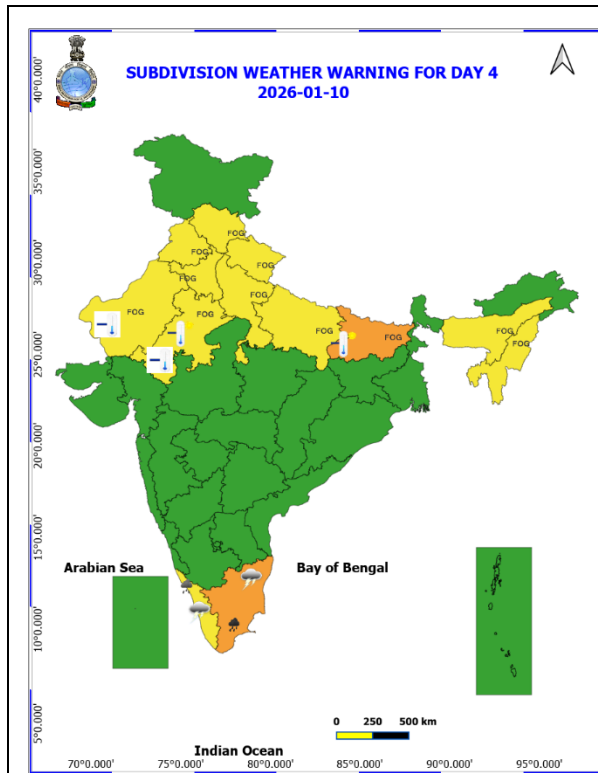
▲ CONE OF UNCERTAINTY

Forecast distance (km) and direction of the centre from nearest 5 coastal stations

Forecast Date and Time	Lead Period (hrs)	Lat	Lon	Station 1	Station 2	Station 3	Station 4	Station 5
07.01.26	0	4.9	87.6	POTTUVIL (680,ESE)	BATTICALOA (720,ESE)	TRINCOMALEE (810,ESE)	KARAIKAL (1090,SE)	CHENNAI (1220,SSE)

## WEATHER WARNING GRAPHICS







- Action may be taken based on ORANGE AND RED COLOUR warnings.
- Vulnerable regions likely urban and hilly areas action may be initiated for heavy rainfall warning.
- As the lead period increases forecast accuracy decreases.



### Fishermen Warning Graphics

