



**India Meteorological Department  
(Ministry of Earth Sciences)**

**BULLETIN NO. : 13 (BOB/07/2022)**

**TIME OF ISSUE: 1230 HOURS IST**

**DATED: 21.08.2022**

**FROM: INDIA METEOROLOGICAL DEPARTMENT (FAX NO. 24643965/24699216/24623220)**

**TO: CONTROL ROOM, NDM, MINISTRY OF HOME AFFAIRS (FAX.NO. 23093750)**

**CONTROL ROOM NDMA (FAX.NO. 26701729)**

**CABINET SECRETARIAT (FAX.NO.23012284, 23018638)**

**PS TO HON'BLE MINISTER FOR S & T AND EARTH SCIENCES (FAX NO.23316745)**

**SECRETARY, MOES (FAX NO. 24629777)**

**H.Q. (INTEGRATED DEFENCE STAFF AND CDS) (FAX NO. 23005137/23005147)**

**DIRECTOR GENERAL, DOORDARSHAN (23385843)**

**DIRECTOR GENERAL, AIR (23421105, 23421219)**

**PIB MOES (FAX NO. 23389042)**

**UNI (FAX NO. 23355841)**

**D.G. NATIONAL DISASTER RESPONSE FORCE (NDRF) (FAX NO. 26105912, 2436 3260)**

**DIRECTOR, PUNCTUALITY, INDIAN RAILWAYS (FAX NO. 23388503)**

**CHIEF SECRETARY, CHATTISGARH (FAX NO. 771-2221206)**

**CHIEF SECRETARY, GOVT. OF MADHYA PRADESH (FAX NO. 755-2441076)**

**CHIEF SECRETARY, GOVT. OF MAHARASHTRA (FAX NO. 022- 22028594)**

**CHIEF SECRETARY, GOVT. OF UTTAR PRADESH (FAX NO. 522- 2239283)**

**CHIEF SECRETARY, GOVT. OF RAJASTHAN (FAX NO. 0141-2227114)**

**CHIEF SECRETARY, GOVT. OF GUJARAT (FAX NO. 079-23250305)**

**Sub: Depression over Northwest Chhattisgarh and adjoining Northeast Madhya Pradesh**

The Depression over Northwest Chhattisgarh and adjoining Northeast Madhya Pradesh & Southeast Uttar Pradesh moved west-northwestwards during past 06 hours with a speed of 14 kmph, and lay centered at 0830 hrs IST of today, the 21<sup>st</sup> August, 2022 over Northwest Chhattisgarh and adjoining Northeast Madhya Pradesh near latitude 23.8°N and longitude 81.7°E, about 80 km east-northeast of Umaria (Madhya Pradesh), 120 km southeast of Satna (Madhya Pradesh) and 220 km east of Damoh (Madhya Pradesh).

It would continue to move west-northwestwards across north Madhya Pradesh and weaken into a Well Marked Low Pressure Area during next 24 hours.

Forecast track and intensity are given in the following table:

<b>Date/Time(IST)</b>	<b>Position (Lat. °N/ long. °E)</b>	<b>Maximum sustained surface wind speed (Kmph)</b>	<b>Category of cyclonic disturbance</b>
21.08.22/0830	23.8/81.7	40-50 gusting to 60	Depression
21.08.22/1130	23.9/81.2	40-50 gusting to 60	Depression
21.08.22/1730	24.0/80.2	35-45 gusting to 55	Depression
21.08.22/2330	24.1/79.3	30-40 gusting to 50	Depression
22.08.22/0530	24.2/78.4	25-35 gusting to 45	Well Marked Low

**Warnings:**

**Rainfall:**

**21<sup>st</sup> August:** Rainfall at most places with heavy to extremely heavy falls at isolated places are very likely over West Madhya Pradesh. Rainfall at most places is very likely with heavy to very heavy rainfall at isolated places over East Rajasthan and East Madhya Pradesh. Heavy rainfall

at isolated places is very likely over southeast & southwest Uttar Pradesh, Vidarbha and Chhattisgarh.

**22<sup>nd</sup> August:** Rainfall at most places with heavy to extremely heavy rainfall at isolated places very likely over west Madhya Pradesh and East Rajasthan; heavy to very heavy rainfall at isolated places over Madhya Maharashtra and heavy rainfall at isolated places over West Rajasthan and North Gujarat region.

**23<sup>rd</sup> August:** Rainfall at most places with heavy to very heavy rainfall at isolated places is likely over south Rajasthan & adjoining North Gujarat and heavy rainfall at isolated places over Madhya Maharashtra.

**24<sup>th</sup> August:** Rainfall at most places with heavy rainfall at isolated places is likely over Southwest Rajasthan.

**Wind:**

- **Squally wind speed reaching 30-40 gusting to 50 kmph** is likely over Northwest Chhattisgarh and adjoining areas of East Madhya Pradesh during next 12 hours and **strong winds speed reaching 25-35 kmph gusting to 45 kmph** is likely to prevail over North Madhya Pradesh and adjoining south Uttar Pradesh during next 24 hours.

**Damage expected over north Chattisgarh and North & Central Madhya Pradesh:**

- Damage to loose/unsecured structures. Some breaches in Kutcha road & embankments due to flooding.
- Damage to small trees like Banana, Papaya etc. Damage to standing crops and horticulture.
- Localized Flooding of roads, water logging in low lying areas and closure of underpasses.
- Reduction in visibility due to heavy rainfall.
- Disruption of traffic in major cities due to water logging in roads.
- Localized Landslide/Mudslides.
- It may lead to riverine flooding in some river catchments (for riverine flooding please visit Web page of CWC)

**Next Bulletin will be issued at 1430 hours IST of today, the 21<sup>st</sup> August, 2022.**

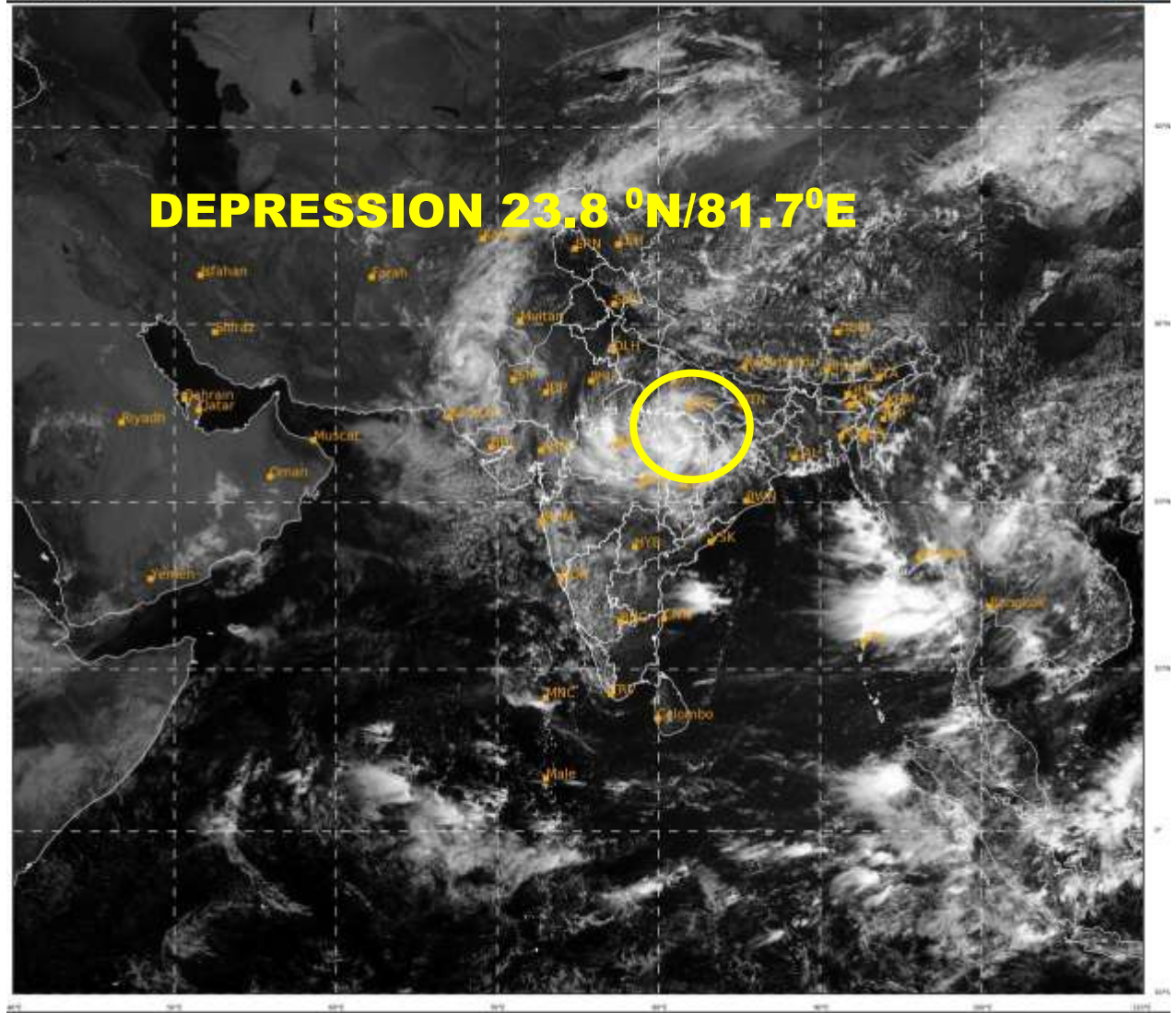
**(Ananda Kumar Das)**  
**Scientist E, Cyclone Warning Division, New Delhi**

**Copy to: ACWC Mumbai/ ACWC Kolkata/ ACWC Chennai/ CWC Bhubaneswar/CWCVisakhapatnam/ / MO Port Blair/MC Raipur/MC Bhopal/MC Hyderabad/RMC Nagpur/**

**LEGEND: Heavy Rainfall:** 64.5 to 115.5mm, **Very Heavy Rainfall:** 115.6 to 204.4mm **Extremely Heavy Rainfall:** more than 204.5 mm, **Most Places:** more than 76% of total stations, **Many Places:** 50% to 75% of total stations, **Isolated Places:** Less than 25% of total stations

SAT : INSAT-3D IMG  
Visible Count 0.65 um  
LIC Mercator

21-08-2022/(0530 to 0557) GMT  
21-08-2022/(1100 to 1127) IST



IMD, DELHI



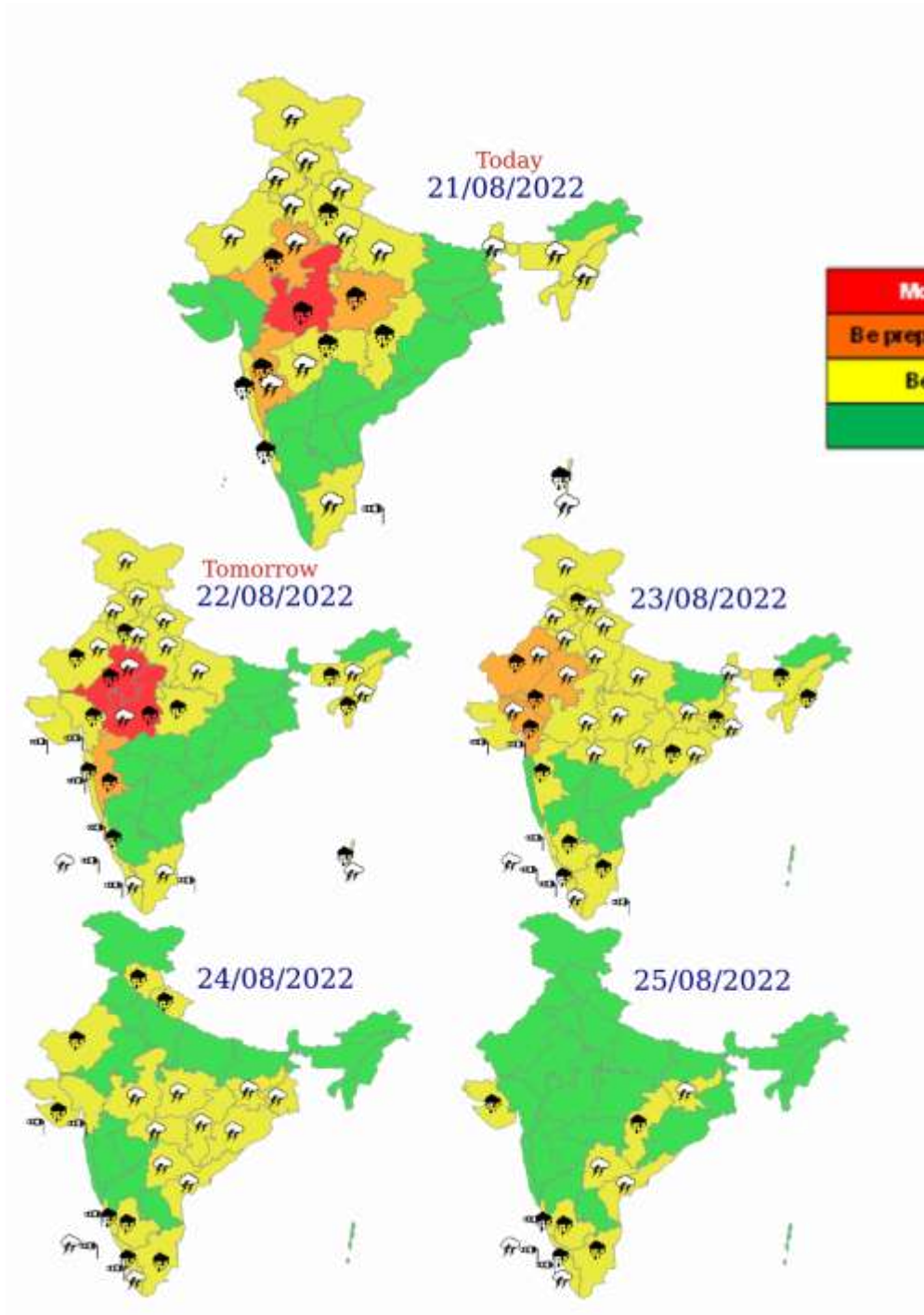


**OBSERVED AND FORECAST TRACK ALONGWITH CONE OF UNCERTAINTY OF DEPRESSION  
OVER NORTHWEST CHHATISGARH AND ADJOINING NORTHEAST MADHYA PRADESH BASED  
ON 0300 UTC OF 21<sup>ST</sup> AUGUST, 2022**



DATE/TIME IN UTC  
 IST=UTC + 0530  
 L: LOW PRESSURE AREA  
 WML: WELL MARKED LOW PRESSURE AREA  
 D: DEPRESSION (17-27 KT)  
 DD: DEEP DEPRESSION (28-33 KT)  
 CS: CYCLONIC STORM (34-47 KT)  
 SCS: SEVERE CYCLONIC STORM (48-63KT)  
 VSCS: VERY SEVERE CYCLONIC STORM (64-89 KT)  
 ESCS: EXTREMELY SEVERE CYCLONIC STORM (90-119 KT)  
 SuCS: SUPER CYCLONIC STORM (≥ 120 KT)

- LESS THAN 34 KT
- 34-47 KT
- ≥ 48 KT
- OBSERVED TRACK
- FORECAST TRACK
- CONE OF UNCERTAINTY



Most Vigil (Take Action)
Be prepared/ updated (Keep Vigil)
Be aware (Be updated)
No Warning

- |  |  |  |  |
|--|--|--|--|
|  Heavy Rain   |  Heavy Snow |  Thunderstorm |  Dust Storm   |
|  Strong Winds |  Visibility |  Cyclone      |  Squall/ Hail |
|  Frost        |  Cold Wave  |  Heat Wave    |  Sea State    |



# Fishermen warning graphics

Day 1: 21.08.2022/11:30 AM to 22.08.2022/05:30 AM



Day 2: 22.08.2022/05:30 AM to 23.08.2022/05:30 AM



Day 3: 23.08.2022/05:30 AM to 24.08.2022/05:30 AM



Day 4: 24.08.2022/05:30 AM to 25.08.2022/05:30 AM



Day 5: 25.08.2022/05:30 AM to 26.08.2022/05:30 AM



Squally WX with wind speed 40-45 gusting to 55 kmph

Squally wind speed 45-55 kmph gusting to 65 kmph

# Probability of exceedance of maximum sustained winds $\geq 45$ kmph

Day 1: 21.08.2022/11:30 AM to 22.08.2022/05:30 AM



Day 2: 22.08.2022/05:30 AM to 23.08.2022/05:30 AM



Day 3: 23.08.2022/05:30 AM to 24.08.2022/05:30 AM


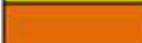



Day 4: 24.08.2022/05:30 AM to 25.08.2022/05:30 AM



Day 5: 25.08.2022/05:30 AM to 26.08.2022/05:30 AM



	Probability of exceedance
	Low (1-33%)
	Moderate (34-67%)
	High (68-100%)