



India Meteorological Department  
Earth System Science Organisation  
(Ministry of Earth Sciences)

BULLETIN NO. : 15 (ARB/02/2020)

TIME OF ISSUE: 0230 HOURS IST

DATED: 02.06.2020

FROM: INDIA METEOROLOGICAL DEPARTMENT (FAX NO. 24643965/24699216/24623220)

TO: CONTROL ROOM, NDM, MINISTRY OF HOME AFFAIRS (FAX.NO. 23092398/23093750)

CONTROL ROOM NDMA (FAX.NO. 26701729)

CABINET SECRETARIAT (FAX.NO.23012284, 23018638)

PS TO HON'BLE MINISTER FOR S & T AND EARTH SCIENCES (FAX NO.23316745)

SECRETARY, MOES (FAX NO. 24629777)

H.Q. (INTEGRATED DEFENCE STAFF AND CDS) (FAX NO. 23005137/23005147)

DIRECTOR GENERAL, DOORDARSHAN (23385843) DIRECTOR GENERAL, AIR (23421101, 23421105, 23421219)

PIB MOES (FAX NO. 23389042)

UNI (FAX NO. 23355841)

D.G. NATIONAL DISASTER RESPONSE FORCE (NDRF) (FAX NO. 26105912, 2436 3260)

DIRECTOR, PUNCTUALITY, INDIAN RAILWAYS (FAX NO. 23388503)

CHIEF SECRETARY, KERALA (FAX NO. 0471-2327176)

ADMINISTRATOR, LAKSHADWEEP ISLANDS (FAX NO. 0413-262184)

ADMINISTRATOR, UNION TERRITORY OF DAMAN & DIU (0260-2230775)

ADMINISTRATOR, UNION TERRITORY OF DADRA NAGAR HAVELI (0260-2230775)

CHIEF SECRETARY, KARNATAKA (FAX NO. 080-22258913)

CHIEF SECRETARY, GOA (FAX NO. 0832-2415201)

CHIEF SECRETARY, MAHARASHTRA (FAX NO. 022- 22028594)

CHIEF SECRETARY, GUJARAT (FAX NO. 079-23250305)

CHIEF SECRETARY, DAMAN & DIU (FAX NO. 0260-2230775)

CHIEF SECRETARY, DADRA & NAGAR HAVELI (FAX NO. 0260-2645466)

Sub: Depression over Eastcentral Arabian Sea: Cyclone Alert for north Maharashtra - south Gujarat coasts: Yellow message

The **Depression** over Eastcentral Arabian Sea moved northwards with a speed of 04 kmph during past 06 hours and lay centred at 2330 hours IST of yesterday, the 01<sup>st</sup> June, 2020 over Eastcentral Arabian Sea near latitude 14.4°N and longitude 71.2°E about 300 km west-southwest of Panjim (Goa), 550 km south-southwest of Mumbai (Maharashtra) and 770 km south-southwest of Surat (Gujarat).

It is very likely to intensify into a Deep Depression during next 12 hours and **intensify further into a Cyclonic Storm over Eastcentral Arabian Sea during subsequent 12 hours**. It is very likely to move nearly northwards initially till 02<sup>nd</sup> June Noon and then recurve north-northeastwards and cross north Maharashtra and south Gujarat coasts between Harihareshwar (Raigad, Maharashtra) and Daman during the afternoon of 03<sup>rd</sup> June .

Forecast track and intensity are given in the following table:

Date/Time(IST)	Position (Lat. °N/ long. °E)	Maximum sustained surface wind speed (Kmph)	Category of cyclonic disturbance
01.06.20/2330	14.4/71.2	45-55 gusting to 65	Depression
02.06.20/0530	14.8/71.2	55-65 gusting to 75	Deep Depression
02.06.20/1130	15.3/71.3	65-75 gusting to 85	Cyclonic Storm
02.06.20/1730	15.9/71.5	80-90 gusting to 100	Cyclonic Storm
02.06.20/2330	16.7/71.7	95-105 gusting to 115	Severe Cyclonic Storm
03.06.20/1130	18.3/72.5	105-115 gusting to 125	Severe Cyclonic Storm
03.06.20/2330	20.1/73.9	60-70 gusting to 80	Cyclonic Storm
04.06.20/1130	21.9/75.8	35-45 gusting to 55	Depression

Spatial rainfall distribution: Isolated: <25%, A few: 26-50%, Many: 51-75%, Most: 76-100%

Rainfall amount (mm): Heavy rain: 64.5 – 115.5, Very heavy rain: 115.6 – 204.4, Extremely heavy rain: 204.5 or more.

## Warnings:

### (i) Rainfall:

Light to moderate rainfall at most places with isolated heavy falls very likely over Lakshadweep area, north Kerala and coastal Karnataka during next 12 hours. Light to moderate rainfall at most places with heavy to very heavy falls at isolated places very likely over south Konkan & Goa during 02<sup>nd</sup> – 03<sup>rd</sup> June.

Light to moderate rainfall at most places with isolated heavy falls on 02<sup>nd</sup> June; with heavy to very heavy falls at a few places and **extremely heavy falls** at isolated places on 03<sup>rd</sup> & 04<sup>th</sup> June very likely over north Konkan and north Madhya Maharashtra.

Light to moderate rainfall at most places with isolated heavy to very heavy falls very likely over south Gujarat state, Daman, Dadra & Nagar Haveli on 03<sup>rd</sup> June and with heavy to very heavy falls at a few places and **extremely heavy falls** at isolated places over south Gujarat region, Daman, Dadra & Nagar Haveli on 04<sup>th</sup> June.

### (ii) Wind warning

Squally wind, speed reaching 45-55 kmph gusting to 65 kmph, is prevailing over Eastcentral and adjoining southeast Arabian Sea. It is very likely to become 50-60 kmph gusting to 70kmph over Eastcentral Arabian Sea by 02<sup>nd</sup> June morning. It will gradually increase becoming Gale wind, speed reaching 60-70 kmph gusting to 80 kmph, over eastcentral Arabian Sea off south Maharashtra coast from 02<sup>nd</sup> June Noon and further becoming 95-105 kmph gusting to 115 kmph over eastcentral and adjoining northeast Arabian Sea along & off Maharashtra (Raigad, Mumbai, Palghar, Thane) coast from 03<sup>rd</sup> June morning. Gale wind speed reaching 80-90 kmph gusting to 100 kmph likely along & off Valsad, Navsari districts of Gujarat and Ratnagiri, Sindhudurg districts of Maharashtra, and 70-80 kmph gusting to 90 kmph along & off Surat & Bharuch districts of south Gujarat from 03<sup>rd</sup> June noon.

Squally wind, speed reaching 50-60 kmph gusting to 70 kmph is likely prevail over eastcentral Arabian Sea along and off Karnataka-Goa coasts during next 36 hours.

Squally wind, speed reaching 40-50 kmph gusting to 60 kmph is likely to prevail over Lakshadweep area and along & off Kerala coast during next 24 hours.

### (iii) Sea condition

The Sea condition is very likely to be rough to very rough over Eastcentral & adjoining Southeast Arabian Sea during next 12 hours. It would become very rough to High over eastcentral Arabian Sea from 02<sup>nd</sup> June Noon. It will become High to very High over Eastcentral Arabian Sea along & off Maharashtra coast from 02<sup>nd</sup> June Evening.

The Sea condition is very likely to be very rough to High over northeast Arabian Sea along & off south Gujarat coast on 03<sup>rd</sup> June.

### (iv) Fishermen Warning

Fishermen are advised not to venture into southeast Arabian Sea, Lakshadweep area and along & off Kerala coast during next 24 hours; eastcentral and Northeast Arabian Sea and along & off Karnataka-Goa-Maharashtra-south Gujarat coasts till 03<sup>rd</sup> June.

*The next bulletin will be issued at 0830 hrs IST of today, the 02<sup>nd</sup> June, 2020.*

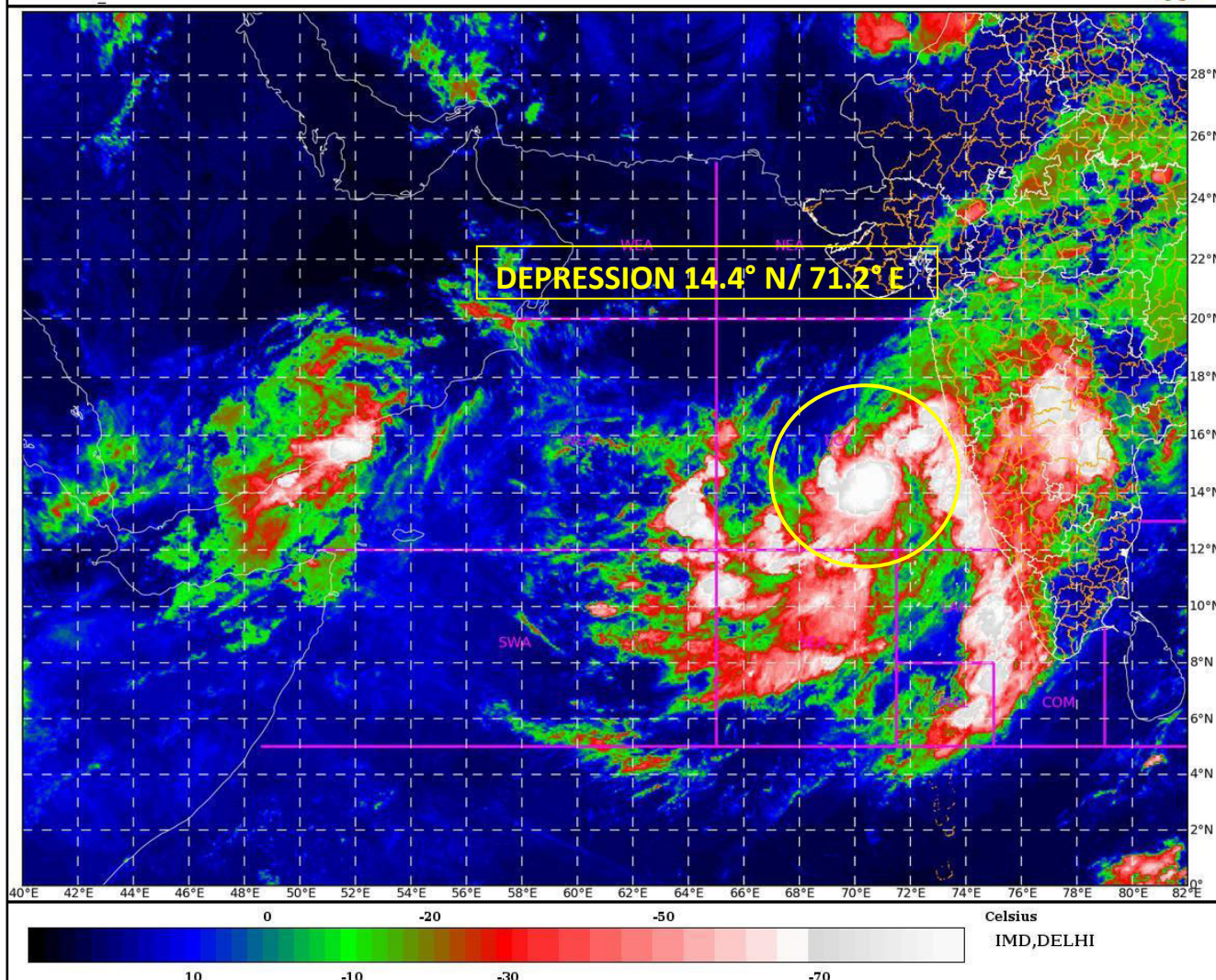
(DR Pattanaik)  
Scientist-E, RSMC, New Delhi

*Copy to: ACWC Chennai/ ACWC Mumbai/ MC Goa/ MC Bengaluru/ CWC Ahmedabad/ Thiruvananthapuram.*

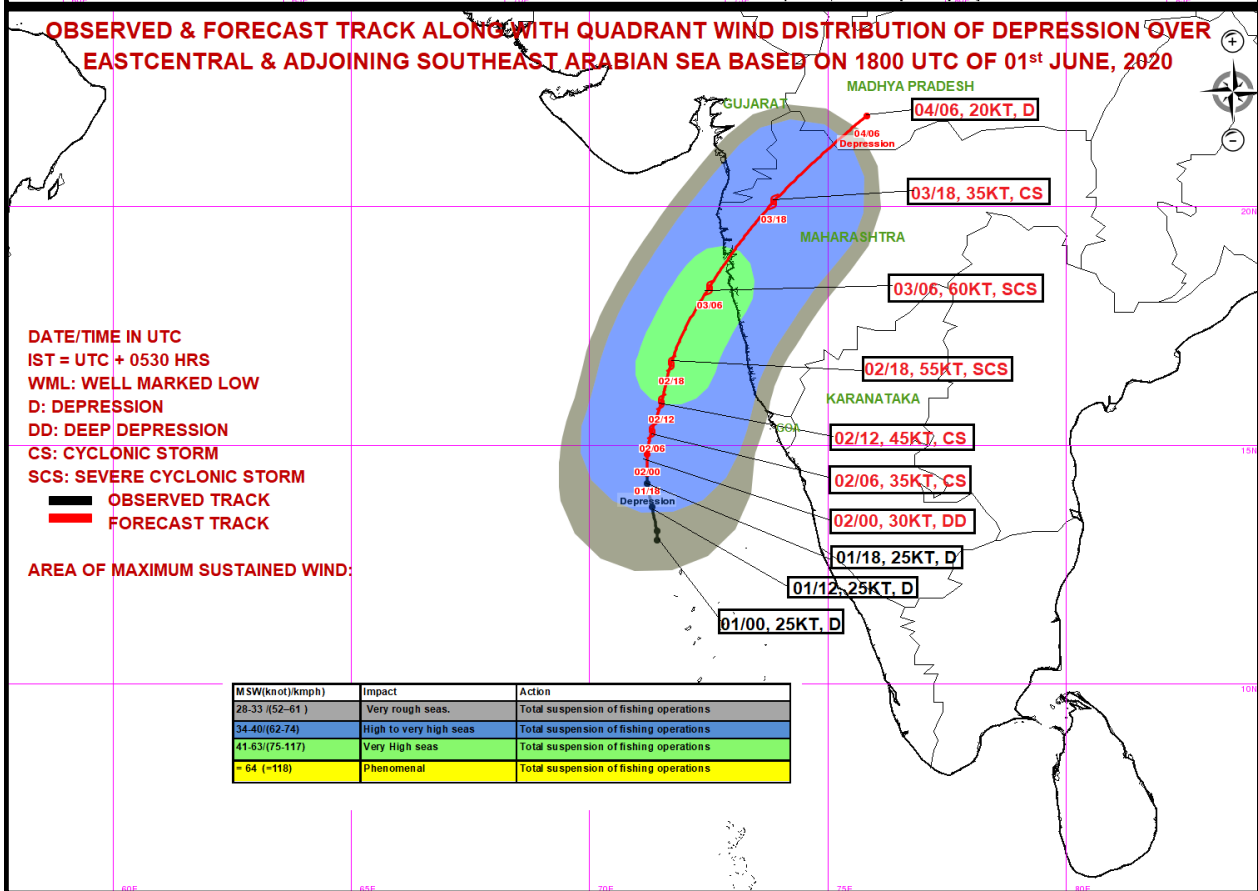
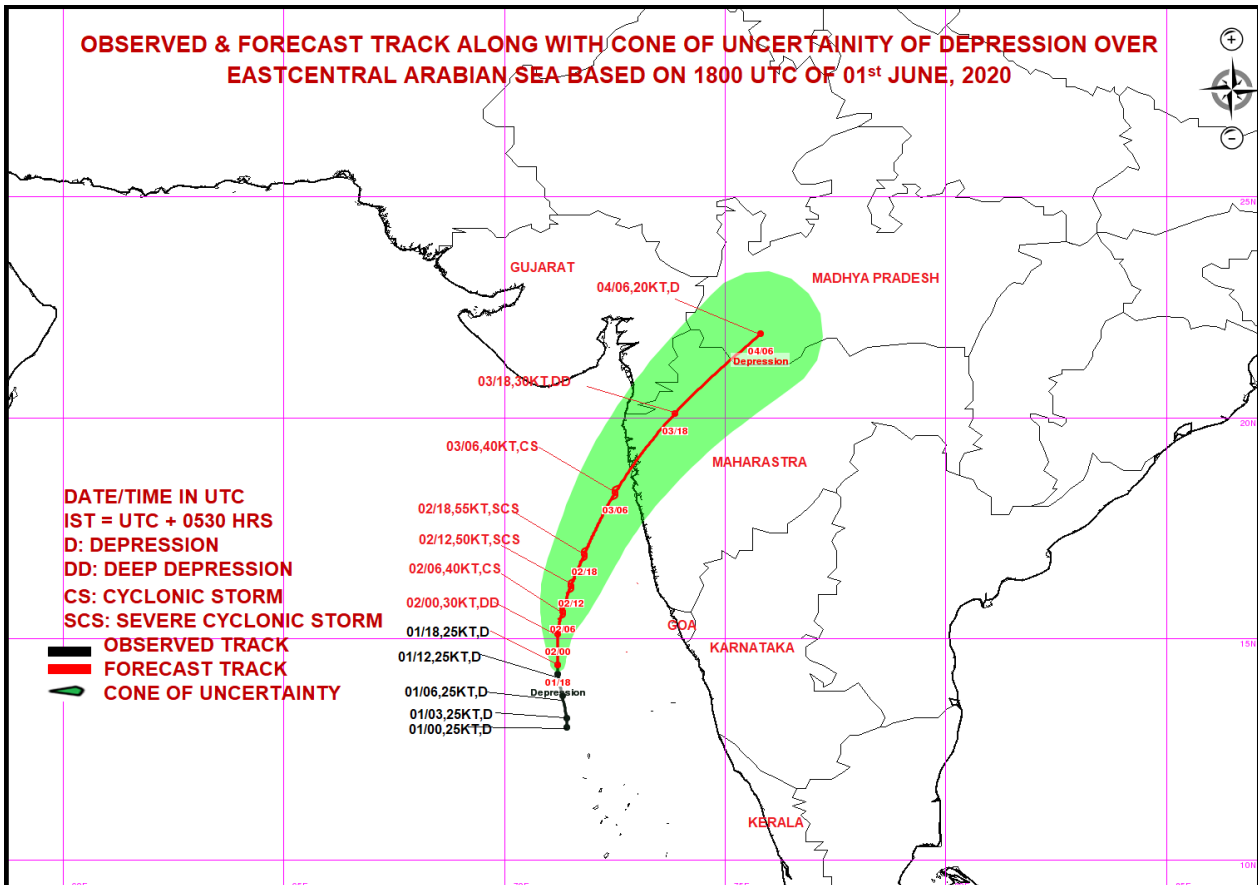
**Spatial rainfall distribution: Isolated: <25%, A few: 26-50%, Many: 51-75%, Most: 76-100%**  
**Rainfall amount (mm): Heavy rain: 64.5 – 115.5, Very heavy rain: 115.6 – 204.4, Extremely heavy rain: 204.5 or more.**

SAT : INSAT-3D IMG  
IMG\_TIR1\_TEMP 10.8 um  
ARABIAN\_SEA

01-06-2020/(1930 to 1956) GMT  
02-06-2020/(0100 to 0126) IST



Spatial rainfall distribution: Isolated: <25%, A few: 26-50%, Many: 51-75%, Most: 76-100%  
Rainfall amount (mm): Heavy rain: 64.5 – 115.5, Very heavy rain: 115.6 – 204.4, Extremely heavy rain: 204.5 or more.



MSW(knot)/kmph	Impact	Action
28-33 (52-61)	Very rough seas.	Total suspension of fishing operations
34-40 (62-74)	High to very high seas	Total suspension of fishing operations
41-63 (75-117)	Very High seas	Total suspension of fishing operations

**Spatial rainfall distribution: Isolated: <25%, A few: 26-50%, Many: 51-75%, Most: 76-100%**  
**Rainfall amount (mm): Heavy rain: 64.5 – 115.5, Very heavy rain: 115.6 – 204.4, Extremely heavy rain: 204.5 or more.**