



**India Meteorological Department
(Ministry of Earth Sciences)**

National Bulletin No. 9 (BOB/01/2026)

TIME OF ISSUE: 0210 HOURS IST

DATED: 09.01.2026

FROM: INDIA METEOROLOGICAL DEPARTMENT (FAX NO. 24643965/24699216/24623220)

TO: CONTROL ROOM, NDM, MINISTRY OF HOME AFFAIRS (FAX.NO. 23093750)

CONTROL ROOM NDMA (FAX.NO. 26701729)

CABINET SECRETARIAT (FAX.NO.23012284, 23018638)

PS TO HON'BLE MINISTER FOR S & T AND EARTH SCIENCES (FAX NO.23316745)

SECRETARY, MOES (FAX NO. 24629777)

H.Q. (INTEGRATED DEFENCE STAFF AND CDS) (FAX NO. 23005137/23005147)

DIRECTOR GENERAL, DOORDARSHAN (23385843)

DIRECTOR GENERAL, AIR (23421105, 23421219)

PIB MOES (FAX NO. 23389042)

UNI (FAX NO. 23355841)

D.G. NATIONAL DISASTER RESPONSE FORCE (NDRF) (FAX NO. 26105912, 2436 3260)

DIRECTOR, PUNCTUALITY, INDIAN RAILWAYS (FAX NO. 23388503)

CHIEF SECRETARY, TAMIL NADU (FAX NO. 044-25672304)

CHIEF SECRETARY, PUDUCHERRY (FAX NO. 0413-2334145)

CHIEF SECRETARY, ANDAMAN & NICOBAR ISLANDS (FAX NO. 03192-232656)

CHIEF SECRETARY, KERALA (FAX NO. 0471-2327176)

CHIEF SECRETARY, ANDHRA PRADESH (FAX NO. 0863-2441029)

CHIEF SECRETARY, ODISHA (FAX NO. 0674-2536660)

CHIEF SECRETARY, WEST BENGAL (FAX NO. 033-22144328)

Subject: Deep Depression over southwest Bay of Bengal

The deep depression over southwest Bay of Bengal moved nearly northwestwards with a speed of 10 kmph during past 6 hours, and lay centred at 2330 hours IST of yesterday, the 8th January, 2026 over the same region, near latitude 6.7°N and longitude 83.6°E, about 200 km east-southeast of Pottuvil (Sri Lanka), 240 km east-southeast of Batticaloa (Sri Lanka), 280 km east-northeast of Hambantota (Sri Lanka), 330 km southeast of Trincomalee (Sri Lanka), 630 km southeast of Karaikal (Puducherry) and 800 km south-southeast of Chennai (Tamil Nadu).

It is very likely to continue to move northwestwards and cross Sri Lanka coast between Pottuvil and Trincomalee around evening/night of 9th January 2026.

Forecast track and intensity is given in Table below:

Date/Time (IST)	Position (Lat. °N/ long. °E)	Maximum sustained surface wind speed (kmph)	Category of cyclonic disturbance
08.01.26/2330	6.7/83.6	55-65 gusting to 75	Deep Depression
09.01.26/0530	7.1/83.0	55-65 gusting to 75	Deep Depression
09.01.26/1130	7.4/82.4	55-65 gusting to 75	Deep Depression
09.01.26/1730	7.7/81.9	50-60 gusting to 70	Deep Depression
09.01.26/2330	7.9/81.4	40-50 gusting to 60	Depression
10.01.26/1130	8.3/80.5	35-45 gusting to 55	Depression

(i) Rainfall Warning:

- ❖ **Tamil Nadu, Puducherry and Karaikal:** Light to moderate rainfall at most places with **heavy to very heavy rainfall** at isolated places is very likely over coastal Tamil Nadu on 9th and 10th January, 2026.
- ❖ **Kerala and Mahe:** Light to moderate rainfall at many places with **heavy rainfall** at isolated places is very likely on 10th January.

(ii) Wind Warning:

(a) Southwest Bay of Bengal and adjoining areas of East Equatorial Indian Ocean:

Squally weather with wind speed reaching 55-65 gusting to 75 kmph is currently prevailing. It would continue to prevail till 9th afternoon. It would gradually decrease becoming 40-50 gusting to 60 kmph by 10th early morning.

(b) Southeast Bay of Bengal:

Squally weather with wind speed reaching 50-60 gusting to 70 kmph is very likely to prevail over adjoining areas of southeast Bay of Bengal and 45-55 gusting to 65 kmph over remaining areas of southeast Bay of Bengal during next 6 hours and gradually decrease thereafter.

(c) Along & off Sri Lanka coast, Gulf of Mannar and adjoining Comorin Area:

Squally weather with wind speed reaching 50-60 gusting to 70 kmph is prevailing over the region. It would gradually decrease becoming 40-50 gusting to 60 kmph by 10th morning.

(d) Along & off Tamil Nadu - Puducherry coasts

Squally weather with wind speed reaching 35-45 gusting to 55 kmph is very likely to prevail along and off South Tamil Nadu coast during next 6 hours. It would gradually increase thereafter and squally winds reaching 40 – 50 gusting to 60 kmph are very likely to prevail from 9th morning to 10th morning. It would gradually decrease thereafter.

Squally weather with wind speed reaching 35-45 gusting to 55 kmph is very likely to prevail along and off North Tamil Nadu & Puducherry coasts on 9th & 10th January and decrease thereafter.

(iii) Sea Condition:

- ❖ Sea condition is very likely to be very rough over southwest Bay of Bengal & adjoining areas of East Equatorial Indian Ocean and along & off Sri Lanka coast, Gulf of Mannar and adjoining Comorin area on 09th & 10th January.
- ❖ Sea condition is very likely to be Rough to very rough along & off Tamil Nadu-Puducherry coasts on 09th & 10th January and improve gradually thereafter.
- ❖ Sea condition is very likely to be very rough to rough over southeast Bay of Bengal during next 6 hours and improve gradually thereafter.

(iv) Fishermen Warning:

Fishermen are advised not to venture into southwest Bay of Bengal & adjoining East Equatorial Indian Ocean on 09th & 10th; adjoining areas of southeast Bay of Bengal on 9th January; along & off Sri Lanka coast, Gulf of Mannar and adjoining Comorin, South Tamil Nadu coast on 09th & 10th January and along & off North Tamil Nadu-Puducherry coast on 9th & 10th January.

(v) Impact Expected over south coastal Tamil Nadu and Karaikal due to heavy rainfall

- ❖ Localized Flooding of roads, water logging in low lying areas and closure of underpasses mainly in urban areas of the above region.
- ❖ Occasional reduction in visibility due to heavy rainfall.
- ❖ Disruption of traffic in city areas and roadways due to water logging in roads and poor visibility due to heavy rain leading to increased travel time and incidents
- ❖ Likely disruption of marine and inland water transportation like small boats and trawlers.
- ❖ Damage to horticulture and standing crops in some areas due to inundation and wind.

(vi) Action Suggested for coastal Tamil Nadu-Puducherry and Karaikal

- Judicious regulation of onshore/offshore, Port and maritime activities
- Judicious regulation of tourism activities in coastal areas.
- Judicious regulation of surface transports including railways and roadways.
- Avoid going to areas that face the water logging problems often.

Next bulletin will be issued at 0830 hours IST of today, the 9th January, 2026.

(Dr. Shashi Kant)
Scientist-D, IMD, New Delhi

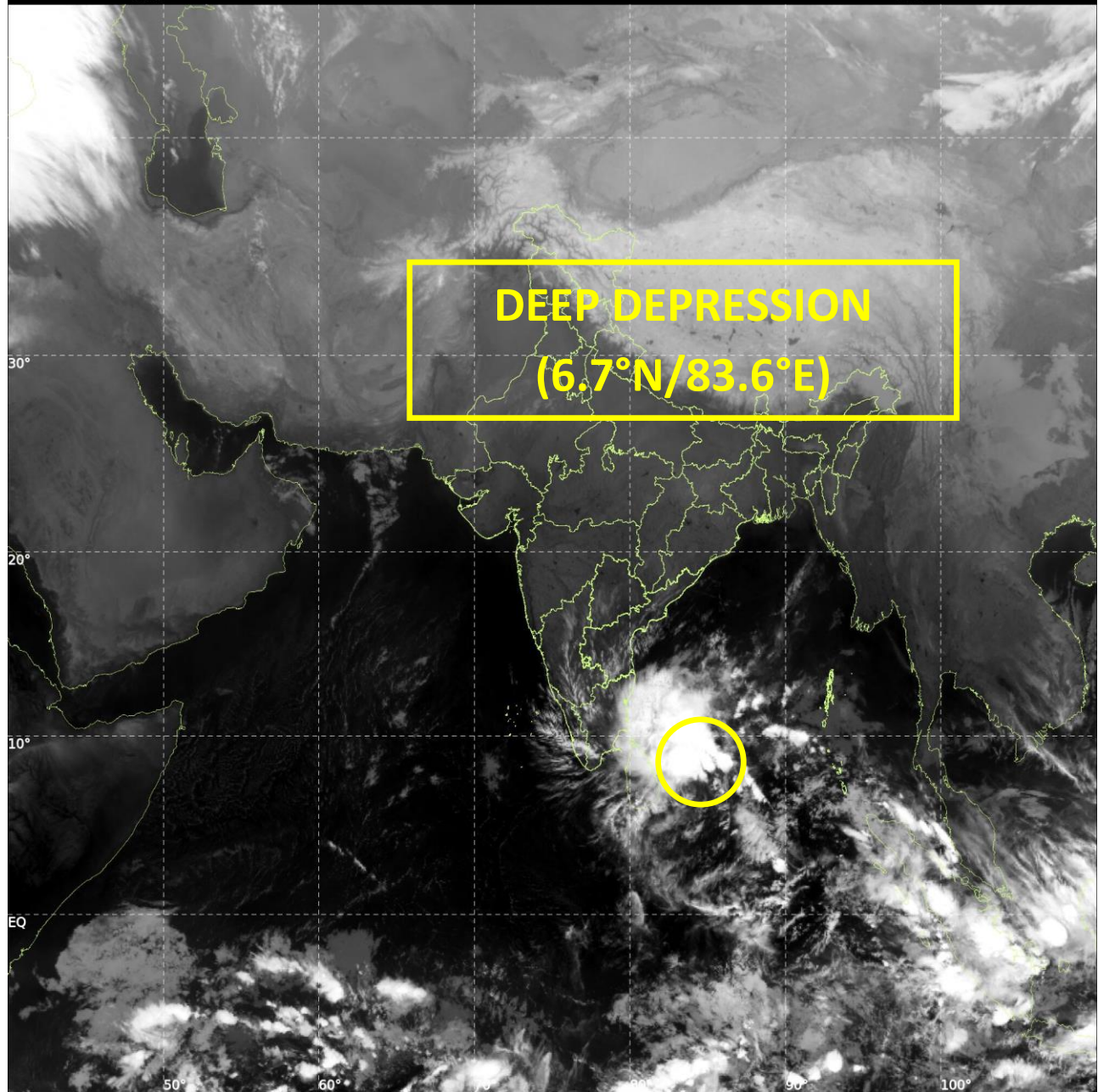
*Copy to: ACWC Kolkata/ACWC Chennai/CWC Bhubaneswar/CWC Vishakhapatnam/CWC Thiruvananthapuram/
Meteorological Centre Vijaya Puram/*



INSAT-3DS IMG, Thermal Infrared1 Count @ 10.83 μm
GMT:08-01-2026/(1830-1857) IST:09-01-2026/(0000-0027)
L1C MERCATOR (LINEAR STRETCH: 1%)

510

908





OBSERVED AND FORECAST TRACK ALONGWITH CONE OF UNCERTAINTY OF DEEP DEPRESSION OVER SOUTHWEST BAY OF BENGAL BASED ON 1800 UTC (2330 Hrs. IST) OF 8TH JANUARY 2026.



DATE/TIME IN UTC
IST=UTC + 0530
L: LOW PRESSURE AREA
WML: WELL MARKED LOW PRESSURE AREA
D: DEPRESSION (17-27 KT)
DD: DEEP DEPRESSION (28-33 KT)
CS: CYCLONIC STORM (34-47 KT)
SCS: SEVERE CYCLONIC STORM (48-63 KT)
VSCS: VERY SEVERE CYCLONIC STORM (64-89 KT)
ESCS: EXTREMELY SEVERE CYCLONIC STORM (90-119 KT)
SuCS: SUPER CYCLONIC STORM (≥ 120 KT)

● LESS THAN 34 KT
● 34-47 KT
● ≥ 48 KT
— OBSERVED TRACK
— FORECAST TRACK
▲ CONE OF UNCERTAINTY

Forecast	DISTANCE (KM) AND DIRECTION FROM STATIONS				
Date and Time (UTC)	POTTUVIL	BATTICALOA	TRINCOMALEE	KARAIKAL	CHENNAI/MINAMBAKKAM
08.01.26/1800	190, E	230, ESE	330, SE	620, SE	790, SSE
09.01.26/0600	130, NNW	40, WNW	80, SSE	380, SSE	590, SSE
09.01.26/1800	330, SE	620, SE	790, SSE	330, SE	
10.01.26/0600	80, SSE	380, SSE	590, SSE	80, SSE	



OBSERVED AND FORECAST TRACK ALONGWITH QUADRANT WIND DISTRIBUTION OF DEEP DEPRESSION OVER SOUTHWEST BAY OF BENGAL BASED ON 1800 UTC (2330 Hrs. IST) OF 8TH JANUARY 2026.



DATE/TIME IN UTC

IST=UTC + 0530

L: LOW PRESSURE AREA

WML: WELL MARKED LOW PRESSURE AREA

D: DEPRESSION (17-27 KT)

DD: DEEP DEPRESSION (28-33 KT)

CS: CYCLONIC STORM (34-47 KT)

SCS: SEVERE CYCLONIC STORM (48-63 KT)

VSCS: VERY SEVERE CYCLONIC STORM (64-89 KT)

ESCS: EXTREMELY SEVERE CYCLONIC STORM (90-119 KT)

SuCS: SUPER CYCLONIC STORM (≥ 120 KT)

● LESS THAN 34 KT

○ 34-47 KT

● ≥ 48 KT

— OBSERVED TRACK

— FORECAST TRACK

— CONE OF UNCERTAINTY

AREA OF MAXIMUM SUSTAINED WIND SPEED:

— 28-33 KT (52-61 KMPH)

— 34-49 KT (62-91 KMPH)

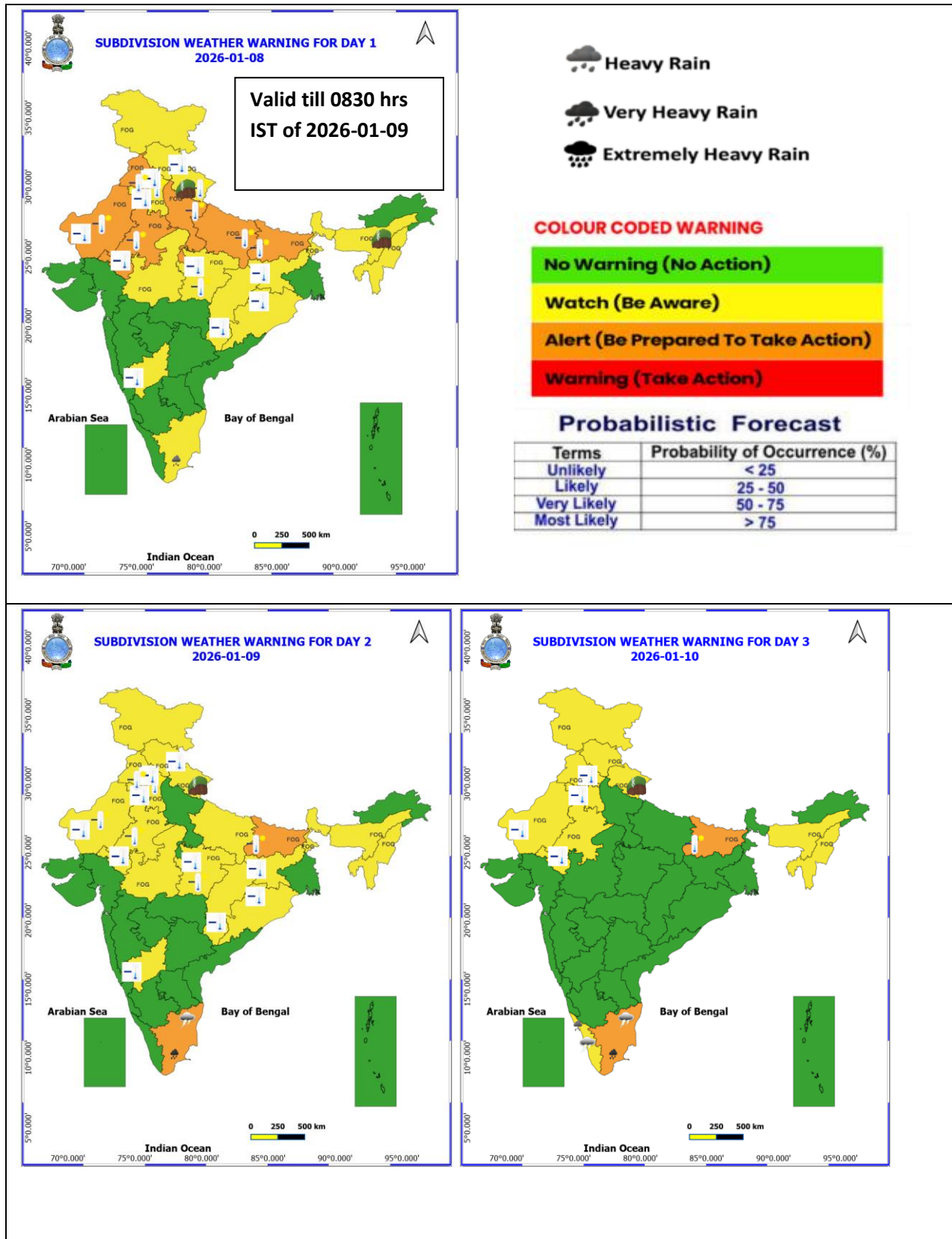
— 50-63 KT (92-117 KMPH)

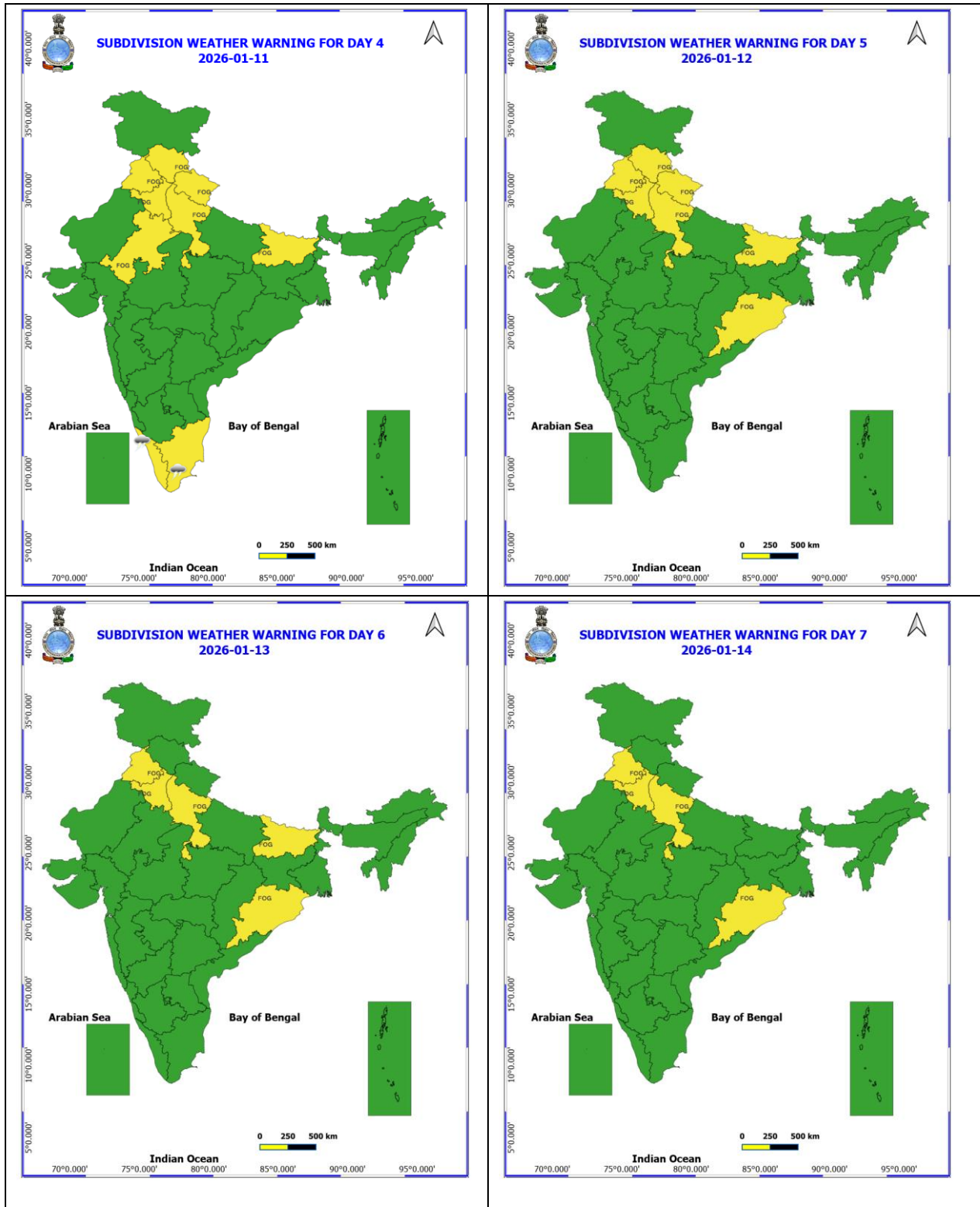
— ≥ 64 KT (≥ 118 KMPH)

IMPACT OVER THE SEA

MSW (knot/kmph)	Impact	Action
28-33 (52-61)	Very rough seas	Total suspension of fishing operations
34-49 (62-91)	High to very high seas	Total suspension of fishing operations
50-63 (92-117)	Very high seas	Total suspension of fishing operations
≥ 64 (≥ 118)	Phenomenal	Total suspension of fishing operations

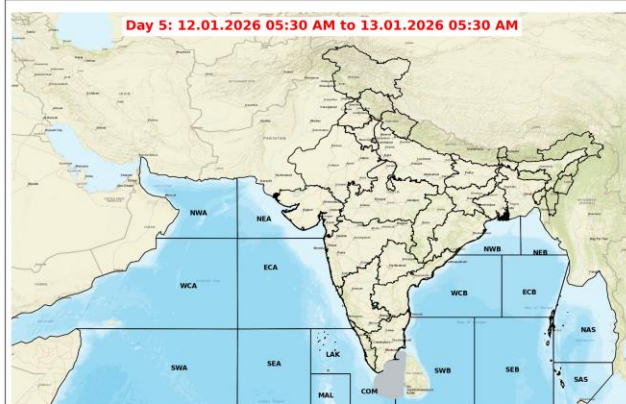
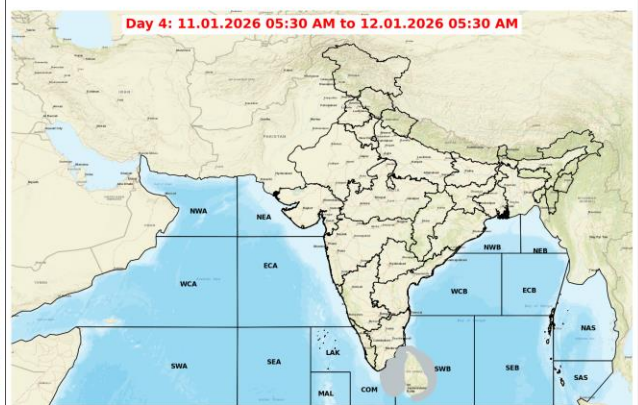
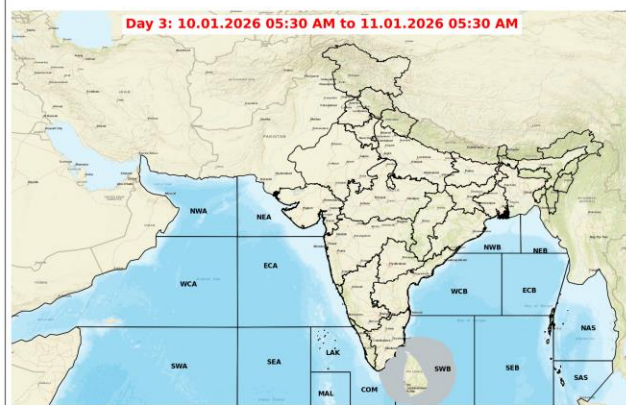
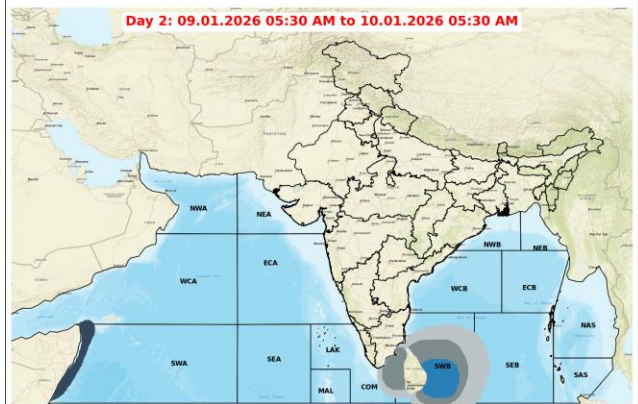
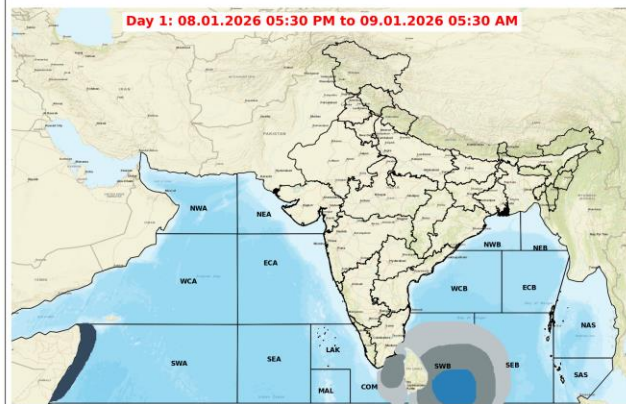
WARNING GRAPHICS





- Action may be taken based on ORANGE AND RED COLOUR warnings.
- Vulnerable regions likely urban and hilly areas action may be initiated for heavy rainfall warning.
- As the lead period increases forecast accuracy decreases.

Fishermen Warning Graphics



Legend

Squally Weather with wind speed 35-45 kmph gusting to 55 kmph	Squally wind with speed 55-65 kmph gusting to 75 kmph
Squally Weather with wind speed 40-50 kmph gusting to 60 kmph	CS with Gale winds with speed 60-80 kmph gusting to 90 kmph
Squally Weather with wind speed 45-55 kmph gusting to 65 kmph	SCS with Gale wind speed 90-110 kmph gusting to 120 kmph
Squally wind with speed 45-55 kmph gusting to 65 kmph	VSCS with Gale wind speed 120-165 kmph gusting to 185 kmph
Squally wind with speed 50-60 kmph gusting to 70 kmph	ESCS with Gale wind speed 165-220 kmph gusting to 245 kmph

Fishermen are advised not to venture into the marked areas.