



**India Meteorological Department
(Ministry of Earth Sciences)**

NATIONAL BULLETIN NO. 03 (ARB/03/2022)

TIME OF ISSUE:0115 HOURS IST

DATED: 15.12.2022

FROM: INDIA METEOROLOGICAL DEPARTMENT (FAX NO. 24643965/24699216/24623220)

**TO: CONTROL ROOM, NDM, MINISTRY OF HOME AFFAIRS (FAX.NO. 23093750)
CONTROL ROOM NDMA (FAX.NO. 26701729)
CABINET SECRETARIAT (FAX.NO.23012284, 23018638)
PS TO HON'BLE MINISTER FOR S & T AND EARTH SCIENCES (FAX NO.23316745)
SECRETARY, MOES (FAX NO. 24629777)
H.Q. (INTEGRATED DEFENCE STAFF AND CDS) (FAX NO. 23005137/23005147)
DIRECTOR GENERAL, DOORDARSHAN (23385843)
DIRECTOR GENERAL, AIR (23421105, 23421219)
PIB MOES (FAX NO. 23389042)
UNI (FAX NO. 23355841)
D.G. NATIONAL DISASTER RESPONSE FORCE (NDRF) (FAX NO. 26105912, 2436 3260)
DIRECTOR, PUNCTUALITY, INDIAN RAILWAYS (FAX NO. 23388503)
CHIEF SECRETARY, GUJARAT (FAX NO. 079-23250305)
CHIEF SECRETARY, DAMAN & DIU (FAX NO. 0260-2230775)
CHIEF SECRETARY, DADRA & NAGAR HAVELI (FAX NO. 0260-2645466)
CHIEF SECRETARY, GOA (FAX NO. 0832-2415201)
CHIEF SECRETARY, MAHARASHTRA (FAX NO. 022- 22028594)
CHIEF SECRETARY, KARNATAKA (FAX NO. 080-22258913)
CHIEF SECRETARY, KERALA (FAX NO. 0471-2327176)
ADMINISTRATOR, LAKSHADWEEP ISLANDS (FAX NO. 0413-262184)
CHIEF SECRETARY, ANDHRA PRADESH (FAX NO. 0863-2441029, 08645-246600)
CHIEF SECRETARY, TAMIL NADU (FAX NO 044-25672304)
CHIEF SECRETARY, PUDUCHERRY (FAX NO 0413-2334145)
CHIEF SECRETARY, GOVT. OF GUJARAT (FAX NO. 079-23250305)
ADMINISTRATOR, ANDAMAN & NICOBAR ISLANDS (FAX NO. 03192- 232656)**

**Sub: (A) Depression over Eastcentral and adjoining Southeast Arabian Sea
(B) Low pressure area over Southeast Bay of Bengal & adjoining areas of East Equatorial Indian Ocean and South Andaman Sea**

(A) Depression over eastcentral and adjoining southeast Arabian Sea

Depression over Eastcentral and adjoining Southeast Arabian Sea moved west-northwestwards with a speed of 09 kmph during past 06 hours and lay centered at 2330 hrs IST of yesterday, the 14th December 2022 near latitude 13.8⁰N and longitude 68.7⁰E about 530 km northwest of Aminidivi (Lakshadweep), about 580 km west-southwest of Panjim (Goa) and 1610 km east-southeast of Salalah (Oman).

It is very likely to move west-northwestwards over Eastcentral Arabian Sea away from Indian coast and intensify further into a deep depression by morning of today, the 15th December 2022.

| Date/Time(IST) | Forecast Lead Period | Position (Lat. °N/ long. °E) | Maximum sustained surface wind speed (kmph) | Category of cyclonic disturbance |
|----------------|----------------------|------------------------------|---|----------------------------------|
| 14.12.22/2330 | 00 | 13.8/68.7 | 45-55 gusting to 65 | Depression |
| 15.12.22/1130 | 12 | 14.1/67.3 | 50-60 gusting to 70 | Deep Depression |
| 15.12.22/2330 | 24 | 14.2/65.9 | 55-65 gusting to 75 | Deep Depression |
| 16.12.22/1130 | 36 | 14.3/64.5 | 55-65 gusting to 75 | Deep Depression |
| 16.12.22/2330 | 48 | 14.4/63.0 | 45-55 gusting to 65 | Depression |
| 17.12.22/1130 | 60 | 14.4/61.3 | 40-50 gusting to 60 | Depression |
| 17.12.22/2330 | 72 | 14.4/59.6 | 30-40 gusting to 50 | Well Marked Low |

Warnings:

(i) **Heavy Rainfall warning: NIL** as the depression is expected to move away from Indian coast.

(ii) **Wind warning (warning graphics enclosed):**

- **Lakshadweep Area: Squally weather with wind speed reaching 40-50 kmph gusting to 60 kmph** till 15th morning and decrease gradually thereafter.
- **Southeast Arabian Sea: Squally weather with wind speed reaching 45-55 kmph gusting to 65 kmph** till 15th evening and decrease gradually thereafter.
- **Eastcentral Arabian Sea: Squally weather with wind speed reaching 45-55 kmph gusting to 65 kmph** is likely till 15th morning, becoming **55-65 kmph gusting to 75 kmph thereafter** till 16th morning. It will gradually decrease thereafter becoming 40-50 kmph gusting to 60 kmph by 17th morning.
- **Westcentral Arabian Sea: Squally weather with wind speed reaching 35-45 kmph gusting to 55 kmph** is likely from 15th morning, becoming **50-60 kmph gusting to 70 kmph** during 15th evening to 16th December morning. It will decrease gradually thereafter becoming 40-50 kmph gusting to 60 kmph by 17th morning.
- **Southwest Arabian Sea: Squally weather with wind speed reaching 35-45 kmph gusting to 55 kmph** is likely from 15th morning and becoming **45-55 kmph gusting to 65 kmph** during 16th morning to 17th December morning.

(iii) **Sea Condition**

- ❖ **Lakshadweep Area: Sea Condition** is likely to be rough to very rough till 15th morning and improve thereafter
- ❖ **Southeast Arabian Sea: Sea Condition** is likely to be rough to very rough till 16th morning and improve thereafter.
- ❖ **Eastcentral Arabian Sea: Sea Condition** is likely to be rough to very rough till 17th morning.
- ❖ **Westcentral Arabian Sea: Sea Condition** is likely to be rough from 15th morning becoming rough to very rough from 15th evening to 17th December morning.
- ❖ **Southwest Arabian Sea: Sea Condition** is likely to be rough from 15th evening becoming rough to very rough during 16th to 17th December morning.

(iv) **Fishermen Warning:**

Fishermen are advised not to venture into

- ❖ **Lakshadweep Area** till 15th December
- ❖ **Southeast Arabian Sea** till 15th December.
- ❖ **Eastcentral Arabian Sea** till 17th morning.
- ❖ **Westcentral Arabian Sea** from 15th morning to 17th December.
- ❖ **Southwest Arabian Sea** from 15th morning to 17th December.

(B) Low pressure area over Southeast Bay of Bengal & adjoining areas of East Equatorial Indian Ocean and South Andaman Sea

The **Low Pressure Area** over Southeast Bay of Bengal & adjoining areas of East Equatorial Indian Ocean and South Andaman Sea persists. It is likely to move gradually westwards and become **Well Marked Low Pressure Area** over Southeast Bay of Bengal and adjoining Equatorial Indian Ocean by 15th December. Thereafter, it would continue to move westwards and maintain its intensity over South Bay of Bengal till morning of 17th December 2022.

Warnings:

(i) Wind warning:

- ❖ **Squally weather with wind speed reaching 35-45 kmph gusting to 55 kmph** is very likely over south Andaman Sea on 15th December.
- ❖ **Squally wind speed reaching 35-45 kmph gusting to 55 kmph** is likely over Southeast Bay of Bengal till 16th December.
- ❖ **Squally wind speed reaching 35-45 kmph gusting to 55 kmph** is likely to prevail over Southwest Bay of Bengal on 16th and 17th December

(iii) Sea condition: Sea condition is likely to be rough over

- ❖ South Andaman Sea on 15th December.
- ❖ Southeast Bay of Bengal till 16th December.
- ❖ Southwest Bay of Bengal on 16th and 17th December.

(iv) Fishermen Warning (warning graphics enclosed)

Fishermen are advised not to venture into:

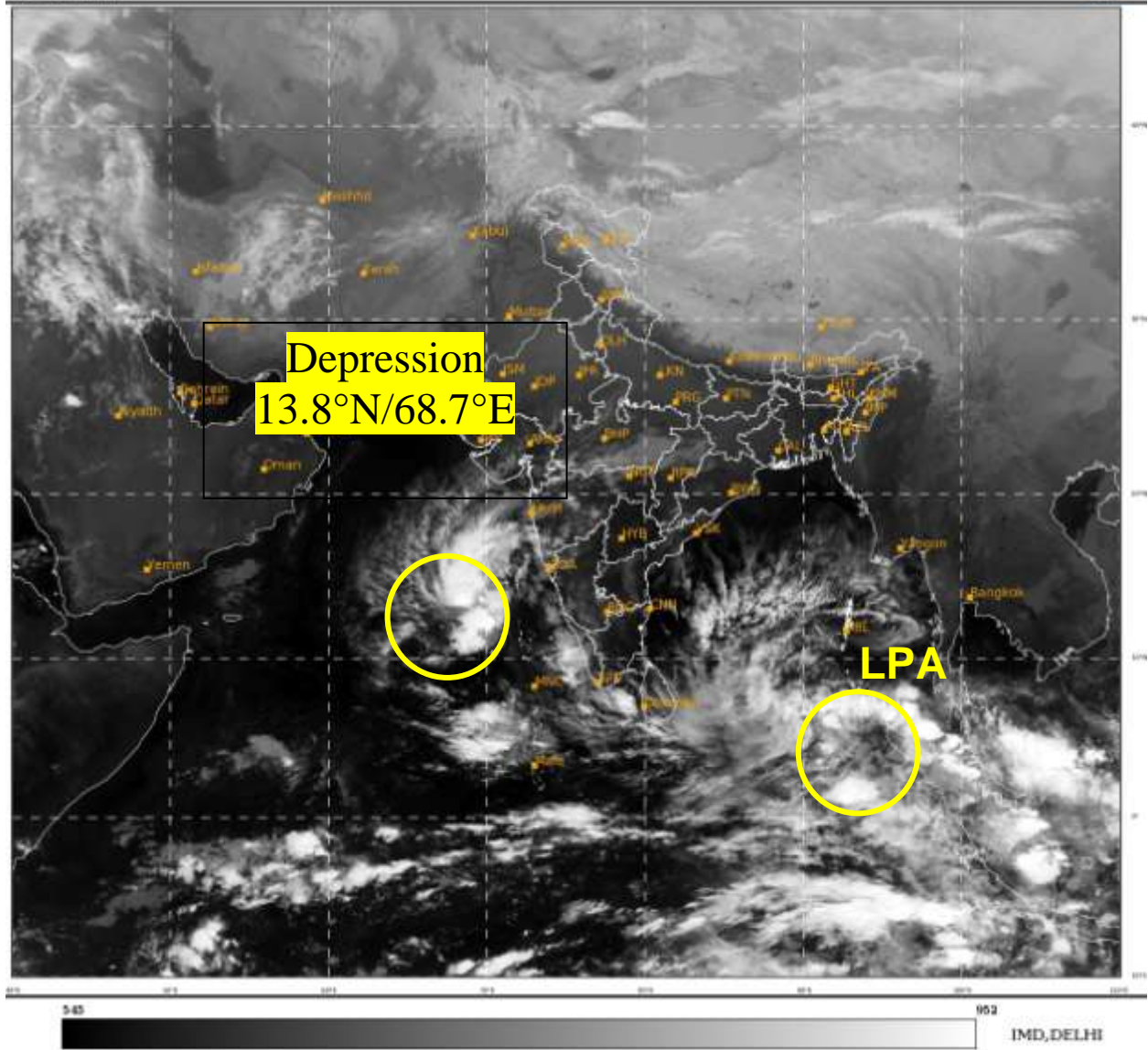
- ❖ South Andaman Sea on 15th December.
- ❖ Southeast Bay of Bengal till 16th December.
- ❖ Southwest Bay of Bengal on 16th and 17th December.

Both the systems are under continuous surveillance and the next message will be issued at 0830 hours IST of today, the 15th December, 2022.

(Krishna Mishra)
Scientist C, Cyclone Warning Division, New Delhi

Copy to: ACWC Mumbai/ ACWC Chennai/ /CWC Ahmedabad/ CWC Thiruvananthapuram/MC Goa

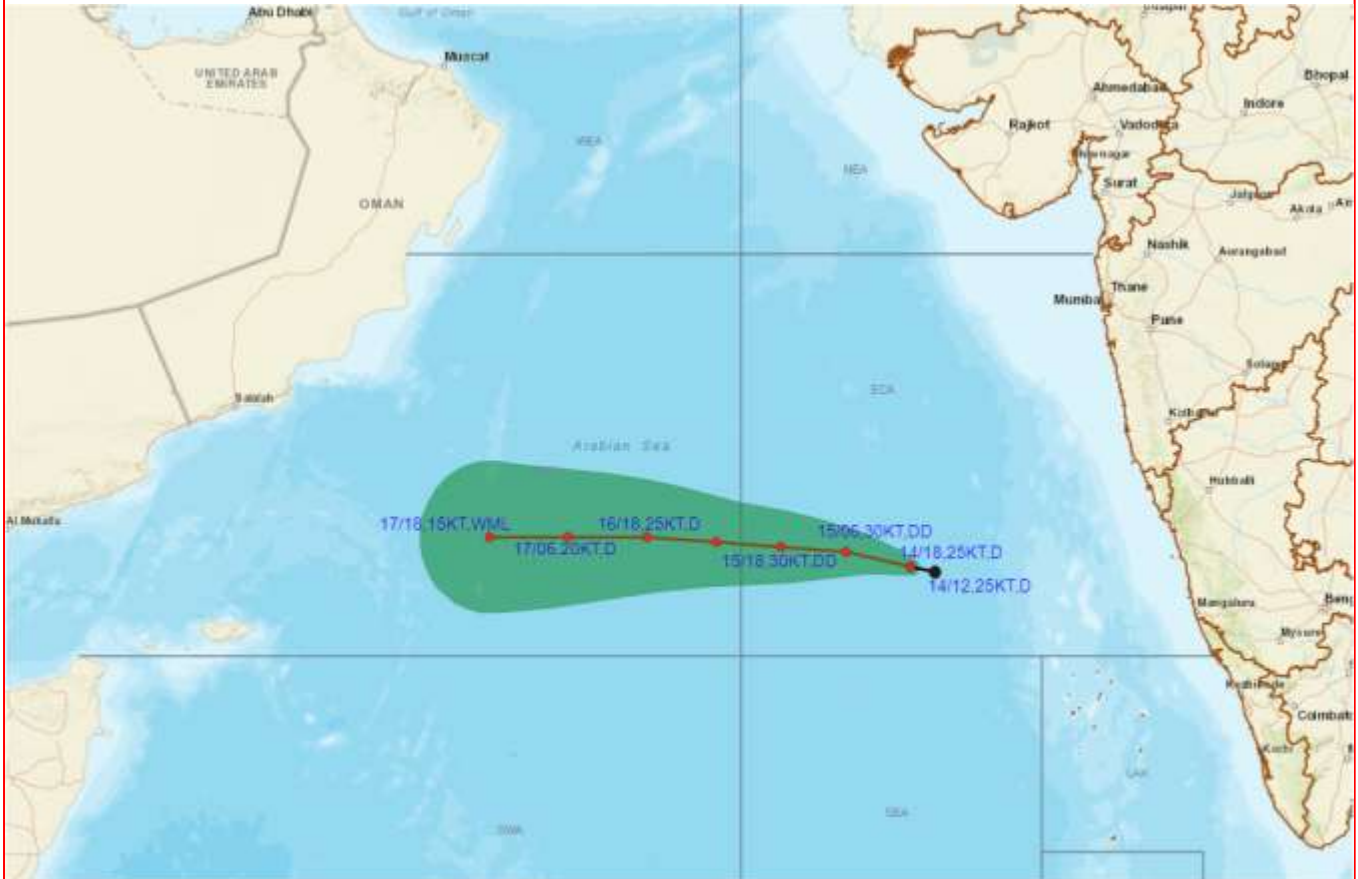
LEGEND: Heavy Rainfall: 64.5 to 115.5mm, **Very Heavy Rainfall:** 115.6 to 204.4mm
Most Places: more than 76% of total stations, **Isolated Places:** Less than 25% of total



LPA – Low Pressure Area



OBSERVED AND FORECAST TRACK OF DEPRESSION OVER EASTCENTRAL AND ADJOINING SOUTHEAST ARABIAN SEA BASED ON 1800 UTC OF 14TH DECEMBER, 2022



DATE/TIME IN UTC

IST=UTC + 0530

L: LOW PRESSURE AREA

WML: WELL MARKED LOW PRESSURE AREA

D: DEPRESSION (17-27 KT)

DD: DEEP DEPRESSION (28-33 KT)

CS: CYCLONIC STORM (34-47 KT)

SCS: SEVERE CYCLONIC STORM (48-63KT)

VSCS: VERY SEVERE CYCLONIC STORM (64-89 KT)

ESCS: EXTREMELY SEVERE CYCLONIC STORM (90-119 KT)

SuCS: SUPER CYCLONIC STORM (\geq 120 KT)



LESS THAN 34 KT



34.47 KT



\geq 48 KT



OBSERVED TRACK



FORECAST TRACK



CONE OF UNCERTAINTY



OBSERVED AND FORECAST TRACK ALONGWITH QUADRANT WIND DISTRIBUTION OF DEPRESSION OVER EASTCENTRAL AND ADJOINING SOUTHEAST ARABIAN SEA BASED ON 1800 UTC OF 14TH DECEMBER, 2022



DATE/TIME IN UTC

IST=UTC + 0530

L: LOW PRESSURE AREA

WML: WELL MARKED LOW PRESSURE AREA

D: DEPRESSION (17-27 KT)

DD: DEEP DEPRESSION (28-33 KT)

CS: CYCLONIC STORM (34-47 KT)

SCS: SEVERE CYCLONIC STORM (48-63KT)

VSCS: VERY SEVERE CYCLONIC STORM (64-89 KT)

ESCS: EXTREMELY SEVERE CYCLONIC STORM (90-119 KT)

SuCS: SUPER CYCLONIC STORM (≥ 120 KT)

● LESS THAN 34 KT

○ 34-47 KT

● ≥ 48 KT

— OBSERVED TRACK

— FORECAST TRACK

● CONE OF UNCERTAINTY

AREA OF MAXIMUM SUSTAINED WIND SPEED:

■ 28-33 KT (52-61 KMPH)

■ 34-49 KT (62-91 KMPH)

■ 50-63 KT (92-117 KMPH)

■ ≥ 64 KT (≥118 KMPH)

IMPACT OVER THE SEA

| MSW (knot/kmph) | Impact | Action |
|-----------------|------------------------|--|
| 28-33 (52-61) | Very rough seas | Total suspension of fishing operations |
| 34-49 (62-91) | High to very high seas | Total suspension of fishing operations |
| 50-63 (92-117) | Very high seas | Total suspension of fishing operations |
| ≥ 64 (≥118) | Phenomenal | Total suspension of fishing operations |

Today
14/12/2022



WARNING



Tomorrow
15/12/2022



16/12/2022



17/12/2022



18/12/2022



Heavy Rain



Strong Winds



Frost



Heavy Snow



Visibility



Cold Wave



Thunderstorm



Cyclone



Heat Wave



Dust Storm



Squall/ Hail



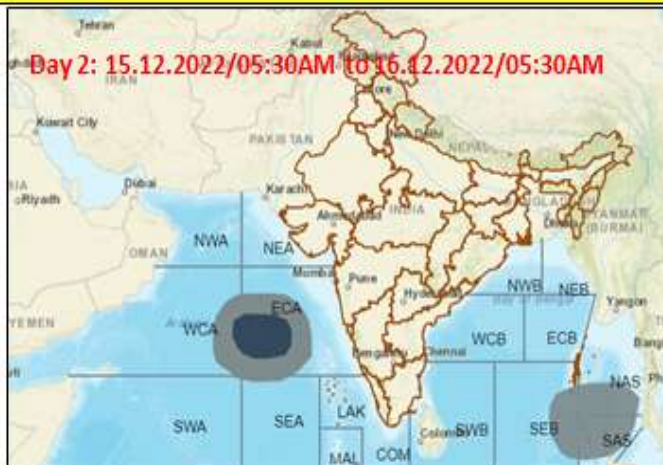
Sea State

Fishermen warning graphics

Day 1: 14.12.2022/11:30AM to 15.12.2022/05:30AM



Day 2: 15.12.2022/05:30AM to 16.12.2022/05:30AM



Day 3: 16.12.2022/05:30AM to 17.12.2022/05:30AM



Day 4: 17.12.2022/05:30AM to 18.12.2022/05:30AM



Day 5: 18.12.2022/05:30AM to 19.12.2022/05:30AM



| | |
|--|--|
| | Squally WX with wind speed 35-45 kmph gusting to 55 kmph |
| | Squally WX with wind speed 45-55 kmph gusting to 65 kmph |
| | Squally wind speed 45-55 kmph gusting to 65 kmph |

Fishermen are advised not to venture into the marked areas.

Probability of exceedance of maximum sustained winds ≥ 45 kmph



| Probability of exceedance | |
|---------------------------|-------------------|
| | Low (1-33%) |
| | Moderate (34-67%) |
| | High (68-100%) |