



**India Meteorological Department  
(Ministry of Earth Sciences)**

**NATIONAL BULLETIN NO. 12 (Land/04/2025)**

**TIME OF ISSUE: 0830 HOURS IST**

**DATED: 09.09.2025**

**FROM: INDIA METEOROLOGICAL DEPARTMENT (FAX NO. 24643965/24699216/24623220)**

**TO: CONTROL ROOM, NDM, MINISTRY OF HOME AFFAIRS (FAX.NO. 23093750)**

**CONTROL ROOM NDMA (FAX.NO. 26701729)**

**CABINET SECRETARIAT (FAX.NO.23012284, 23018638)**

**PS TO HON'BLE MINISTER FOR S & T AND EARTH SCIENCES (FAX NO.23316745)**

**SECRETARY, MOES (FAX NO. 24629777)**

**H.Q. (INTEGRATED DEFENCE STAFF AND CDS) (FAX NO. 23005137/23005147)**

**DIRECTOR GENERAL, DOORDARSHAN (23385843)**

**DIRECTOR GENERAL, AIR (23421105, 23421219)**

**PIB MOES (FAX NO. 23389042)**

**UNI (FAX NO. 23355841)**

**D.G. NATIONAL DISASTER RESPONSE FORCE (NDRF) (FAX NO. 26105912, 2436 3260)**

**DIRECTOR, PUNCTUALITY, INDIAN RAILWAYS (FAX NO. 23388503)**

**CHIEF SECRETARY, GOVT. OF RAJASTHAN (FAX NO. 0141-2227114)**

**CHIEF SECRETARY, GOVT. OF GUJARAT (FAX NO. +9179 23250305)**

**CHIEF SECRETARY, GOVT. OF MAHARASHTRA (FAX NO. +9122 22028594)**

**CHIEF SECRETARY, DAMAN & DIU (FAX NO. 0260-2230775)**

**CHIEF SECRETARY, DADRA & NAGAR HAVELI (FAX NO. 0260-2645466)**

**CHIEF SECRETARY, GOA (FAX NO. 0832-2415201)**

**Subject: Depression over southeast Pakistan**

The depression over Southeast Pakistan and adjoining Rajasthan moved slowly west-southwestwards with the speed of 05 kmph during past 6 hours, lay centred at 0530 hrs IST of today, the 09th September, 2025, over southeast Pakistan near latitude 25.8°N and longitude 68.7°E, about 50 km north-northeast of Hyderabad (Pakistan), 60 km south-southeast of Nawabshah (Pakistan), 130km south-southeast of Padidan and 250 km west-southwest of Jaisalmer (Rajasthan).

It is very likely to continue to move west-southwestwards across south Pakistan and weaken gradually into a Well-marked low-pressure area during next 12 hours.

**Warnings:**

**(i) Rainfall Warning:**

**Saurashtra & Kutch:** Light to moderate rainfall at many places with **heavy rainfall at isolated places** is likely over the Kutch region on 9<sup>th</sup> September.

**(ii) Wind Warnings:**

- Squally weather with wind speed reaching 45-55 kmph gusting to 65 kmph is likely to prevail over northeast Arabian Sea and along & off Saurashtra & Kutch and Pakistan coasts during next 12 hours and decrease thereafter.

**(iii) Sea condition:** Sea condition is likely to be rough over northeast Arabian Sea, along & off Saurashtra & Kutch and Pakistan coasts during next 12 hours and improve thereafter.

**(iv) Warning:**

- Fishermen are advised not to venture into northeast Arabian Sea and along & off Saurashtra & Kutch coasts till evening of today, the 9<sup>th</sup> September, 2025.

- Small ships/shipping activities are to be monitored and regulated till evening of today, the 9<sup>th</sup> September 2025.
- Judicious regulation of tourism, recreational and onshore/off shore operations till evening of today, the 9<sup>th</sup> September 2025.

**(v) Impact Expected and Action Suggested due squally winds over Saurashtra & Kutch**

**Impact expected:**

- ❖ Helicopter services may get affected.

**Action suggested:**

- ❖ Helicopter services to be regulated.
- ❖ Offshore-onshore operations may be regulated

**Next bulletin will be issued at 1230 hrs IST of today, the 09<sup>th</sup> September, 2025.**

**(Umasankar Das)**

**Scientist-D, IMD, New Delhi**

*Copy to: Regional Meteorological Centres- Mumbai, Meteorological Centres Ahmedabad, Jaipur.*



## OBSERVED AND FORECAST TRACK OF DEPRESSION OVER SOUTHEAST PAKISTAN BASED ON 0000 UTC (0530 IST) OF 09<sup>th</sup> SEP, 2025.



DATE/TIME IN UTC  
IST=UTC + 0530  
L: LOW PRESSURE AREA  
WML: WELL MARKED LOW PRESSURE AREA  
D: DEPRESSION (17-27 KT)  
DD: DEEP DEPRESSION (28-33 KT)  
CS: CYCLONIC STORM (34-47 KT)  
SCS: SEVERE CYCLONIC STORM (48-63KT)  
VSCS: VERY SEVERE CYCLONIC STORM (64-89 KT)  
ESCS: EXTREMELY SEVERE CYCLONIC STORM (90-119 KT)  
SuCS: SUPER CYCLONIC STORM (≥ 120 KT)

● LESS THAN 34 KT  
◐ 34-47 KT  
◑ ≥ 48 KT  
— OBSERVED TRACK  
— FORECAST TRACK  
▲ CONE OF UNCERTAINTY

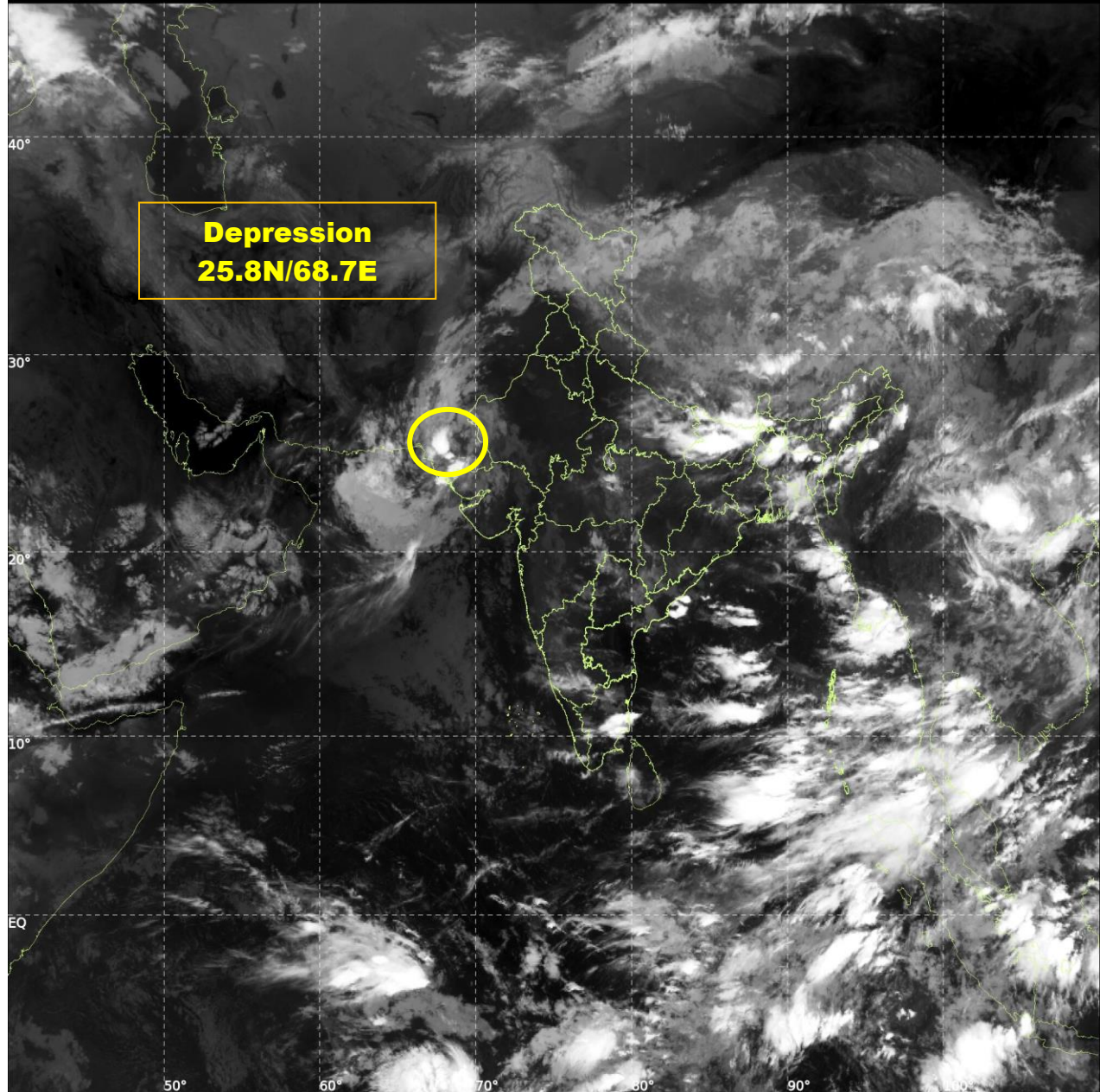




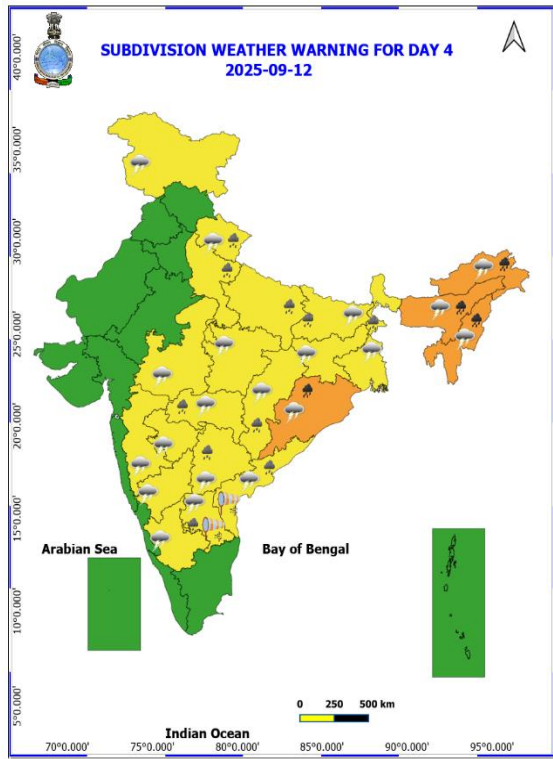
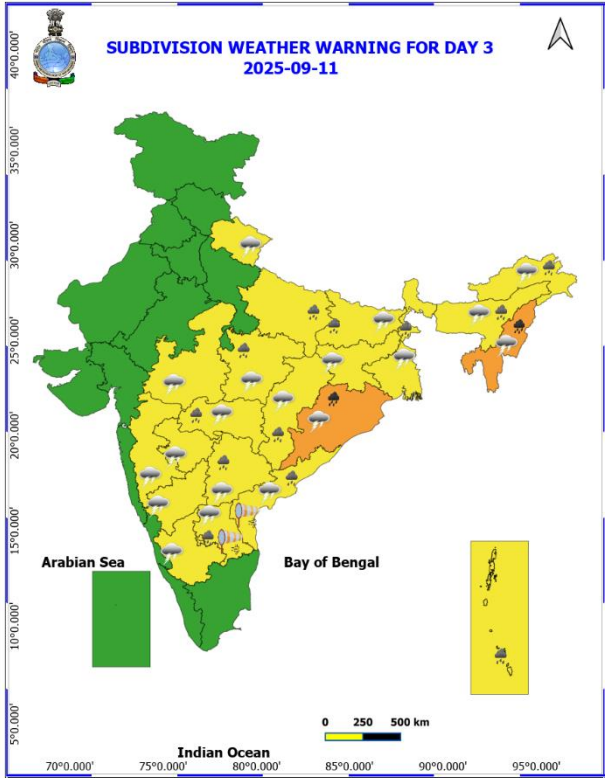
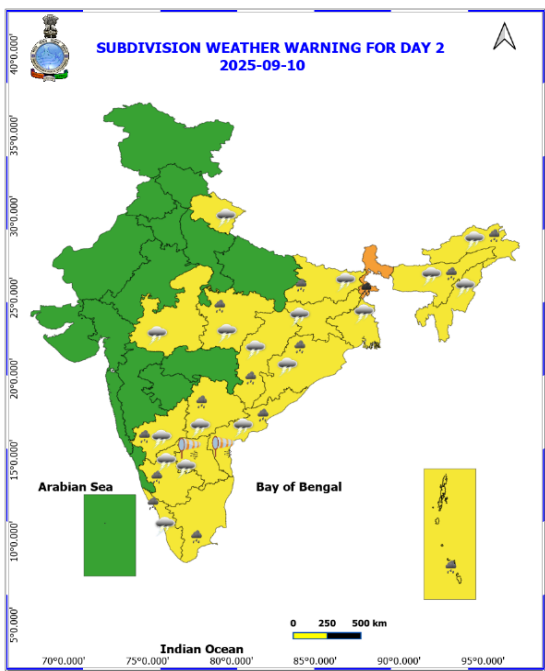
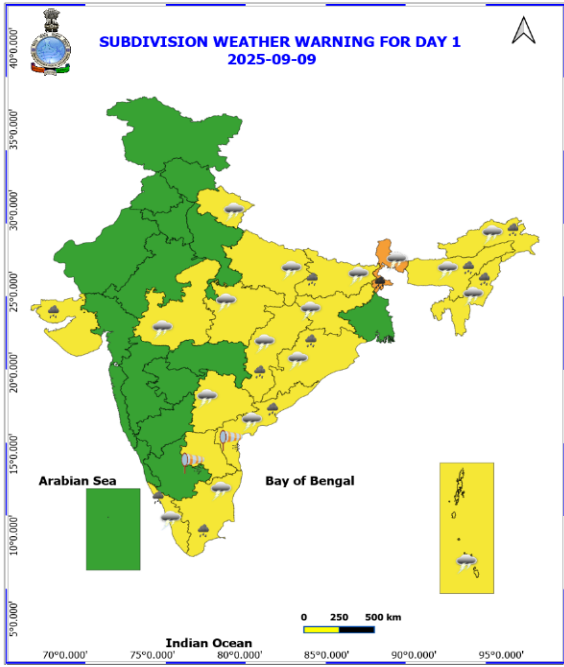
INSAT-3DS IMG, Thermal Infrared1 Count @ 10.83  $\mu\text{m}$   
GMT:09-09-2025/(0130-0157) IST:09-09-2025/(0700-0727)  
L1C MERCATOR (LINEAR STRETCH: 1%)

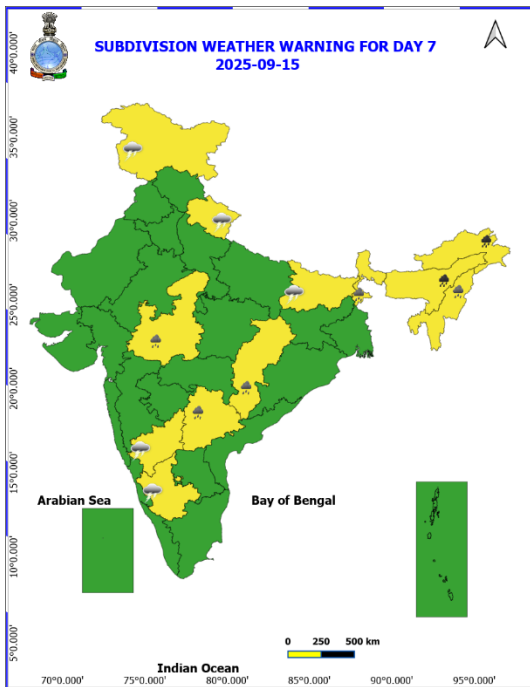
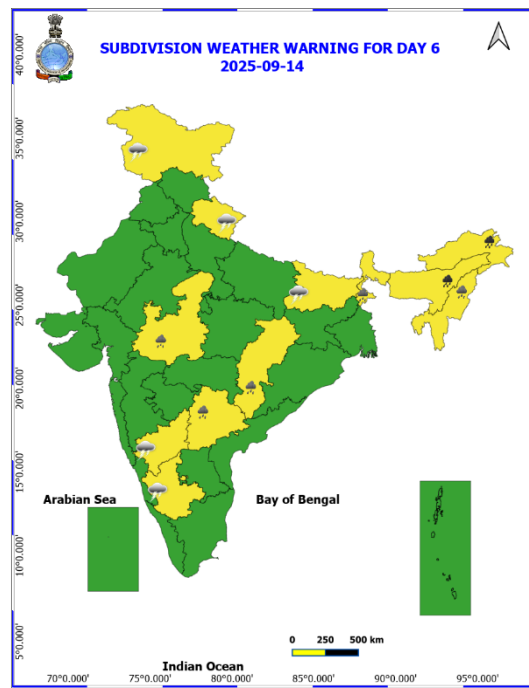
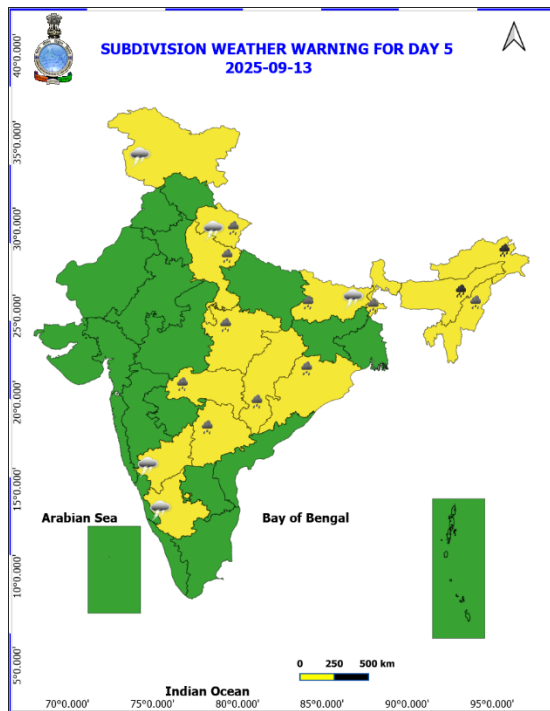
490

908



Weather Warning Graphics

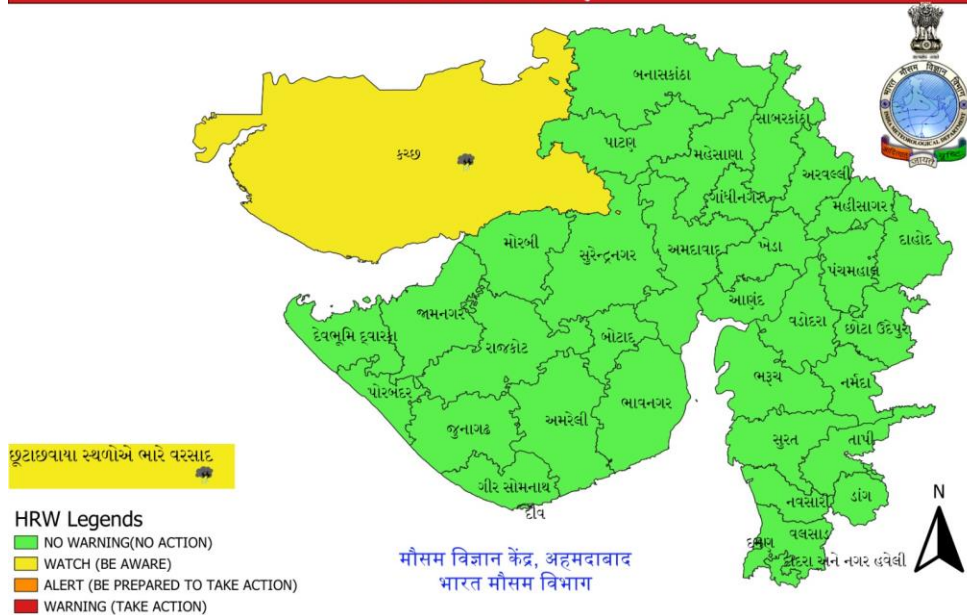




- Action may be taken based on **ORANGE AND RED COLOUR** warnings.
- Vulnerable regions likely urban and hilly areas action may be initiated for heavy rainfall warning.
- As the lead period increases forecast accuracy decreases.

No Warning	Watch	Alert	Warning	Heavy Rain
Very Heavy Rain	Extremely Heavy Rain	Heavy Snow	Thunderstorm & Lightning	Hailstorm
Dust Storm	Dust Raising Winds	Strong Surface Winds	Heat Wave	Hot Day
Hot and Humid	Warm Night	Cold Wave	Cold Day	Ground Frost
Fog				

દિવસ - 2 ગુજરાત રાજ્ય અને દીવ, દમણ દ્વારા નગર હવેલી ની 09-09-2025 માટે  
' ભારે વરસાદ ની ચેતવણી '





## Fishermen Warning Graphics

