



**India Meteorological Department  
(Ministry of Earth Sciences)**

**National Bulletin No. 1 (BOB/08/2025)**

**TIME OF ISSUE: 1300 HOURS IST**

**DATED: 25.11.2025**

**FROM: INDIA METEOROLOGICAL DEPARTMENT (FAX NO. 24643965/24699216/24623220)**

**TO: CONTROL ROOM, NDM, MINISTRY OF HOME AFFAIRS (FAX.NO. 23093750)**

**CONTROL ROOM NDMA (FAX.NO. 26701729)**

**CABINET SECRETARIAT (FAX.NO.23012284, 23018638)**

**PS TO HON'BLE MINISTER FOR S & T AND EARTH SCIENCES (FAX NO.23316745)**

**SECRETARY, MOES (FAX NO. 24629777)**

**H.Q. (INTEGRATED DEFENCE STAFF AND CDS) (FAX NO. 23005137/23005147)**

**DIRECTOR GENERAL, DOORDARSHAN (23385843)**

**DIRECTOR GENERAL, AIR (23421105, 23421219)**

**PIB MOES (FAX NO. 23389042)**

**UNI (FAX NO. 23355841)**

**D.G. NATIONAL DISASTER RESPONSE FORCE (NDRF) (FAX NO. 26105912, 2436 3260)**

**DIRECTOR, PUNCTUALITY, INDIAN RAILWAYS (FAX NO. 23388503)**

**CHIEF SECRETARY, ODISHA (FAX NO. 0674-2536660)**

**CHIEF SECRETARY, WEST BENGAL (FAX NO. 033-22144328)**

**CHIEF SECRETARY, ANDAMAN & NICOBAR ISLANDS (FAX NO. 03192-232656)**

**CHIEF SECRETARY, TAMIL NADU (FAX NO. 044-25672304)**

**CHIEF SECRETARY, ANDHRA PRADESH (FAX NO. 0863-2441029)**

**CHIEF SECRETARY, PUDUCHERRY (FAX NO. 0413-2334145)**

**CHIEF SECRETARY, KERALA (FAX NO. 0471-2327176)**

**CHIEF SECRETARY, LAKSHADWEEP (FAX NO. 048-96268124)**

**Subject: (A) Depression over Strait of Malacca and (B) Low pressure area over southwest Bay of Bengal and adjoining areas of South Sri Lanka & Equatorial Indian Ocean**

**(A) Depression over Strait of Malacca**

Yesterday's well marked low pressure area over Malaysia and adjoining Strait of Malacca moved west-northwestwards, intensified into a depression and lay centred at 0830 hours IST of today, the 25th November, 2025 over Strait of Malacca, near latitude 5.4°N and longitude 99.7°E, about 70 km west of George Town (Malaysia), 290 km east of Kuta Makmur (Indonesia), 740 km east-southeast of Nancowry (Nicobar Islands) and 870 km east-southeast of Car Nicobar (Nicobar Islands).

It is very likely to move slowly west-northwestwards and intensify further during next 48 hours.

**(B) Low pressure area over southwest Bay of Bengal and adjoining areas of South Sri Lanka & Equatorial Indian Ocean**

Under the influence of yesterday's upper air cyclonic circulation over Comorin area and neighbourhood, a low-pressure area formed over the Comorin and adjoining areas of southwest Bay of Bengal & Sri Lanka at 0530 hours IST of today, the 25<sup>th</sup> November, 2025. It lay over southwest Bay of Bengal and adjoining areas of South Sri Lanka & Equatorial Indian Ocean at

0830 hours IST of today, the 25<sup>th</sup> November, 2025. It is very likely to move north-northwestwards and become well marked low pressure area during next 24 hours and intensify further into a depression during subsequent 24 hours.

### **Rainfall Warning:**

#### **❖ Andaman & Nicobar Islands:**

**Nicobar Islands:** Light to moderate rainfall at many places with **heavy rainfall (07-11 cm)** at isolated places is very likely on 25<sup>th</sup> November. Thereafter, it is very likely to increase becoming light to moderate rainfall at most places with **heavy to very rainfall (07-20 cm)** at isolated places during 26<sup>th</sup> to 27<sup>th</sup> November. It would decrease gradually becoming **heavy rainfall** at isolated places during 28<sup>th</sup> and 29<sup>th</sup> November, 2025.

**Andaman Islands:** Light to moderate rainfall at many places with **heavy rainfall** at isolated places is also likely during 26<sup>th</sup> to 28<sup>th</sup> November. Thereafter, it would decrease gradually.

❖ **Tamil Nadu & Puducherry:** Light to moderate rainfall at many places with **heavy rainfall** at isolated places during 25<sup>th</sup> to 27<sup>th</sup> November, 2025. The rainfall activity would increase thereafter and light to moderate rainfall at most places with **heavy to very rainfall** at isolated places is very likely during 28<sup>th</sup> to 30<sup>th</sup> November, 2025. Thereafter, it will decrease gradually.

❖ **Kerala:** Light to moderate rainfall at many places with **heavy rainfall** at isolated places is very likely during 25<sup>th</sup> to 26<sup>th</sup> November. Thereafter, it will decrease gradually.

❖ **Andhra Pradesh:** Light to moderate rainfall at many places with **heavy rainfall** at isolated places is very likely on 29<sup>th</sup> November. Thereafter, it is very likely to increase becoming light to moderate rainfall at most places with **heavy to very rainfall** at isolated places on 30<sup>th</sup> November. It would then decrease gradually becoming light to moderate rainfall at many places with **heavy rainfall** at isolated places on 1<sup>st</sup> December.

### **(ii) Wind Warning:**

#### **(a) South Andaman Sea, Strait of Malacca and along & off Nicobar Islands & adjoining Malaysia, western Indonesia & Thailand:**

Squally weather with wind speed reaching 40-50 gusting to 60 kmph is very likely to prevail on 25<sup>th</sup> November. Winds speed would gradually increase becoming squally winds reaching 50-60 gusting to 70 kmph during 26<sup>th</sup> to 28<sup>th</sup> November. The winds speed would gradually decrease thereafter.

#### **(b) Adjoining areas of North Andaman Sea**

Squally weather with wind speed reaching 35-45 gusting to 55 kmph is very likely to prevail during 25<sup>th</sup> to 28<sup>th</sup> November.

#### **(c) Southeast Bay of Bengal:**

Squally weather with wind speed reaching 35-45 gusting to 55 kmph is very likely on 25<sup>th</sup> November. It would gradually increase becoming squally winds speed reaching 45-55 gusting to 65 kmph during 26<sup>th</sup> to 28<sup>th</sup> November.

**(d) Southwest Bay of Bengal, Gulf of Mannar, Comorin area and along & off Tamil Nadu, Puducherry & Sri Lanka coasts**

Squally weather with wind speed reaching 35-45 kmph gusting to 55 kmph likely to prevail during 25<sup>th</sup> to 26<sup>th</sup> November. It is very likely to increase becoming squally winds speed reaching 45-55 kmph gusting to 55 kmph from 27<sup>th</sup> morning and 55-65 gusting to 75 kmph during 28<sup>th</sup> to 30<sup>th</sup> November.

**(e) Adjoining areas of Southeast Arabian Sea, Lakshadweep, Maldives and along & off Kerala coast:**

Squally weather with wind speed reaching 35-45 kmph gusting to 55 kmph likely to prevail during 25<sup>th</sup> to 27<sup>th</sup> November.

**(e) Westcentral Bay of Bengal and along & off Andhra Pradesh coast:**

Squally weather with wind speed reaching 35-45 kmph gusting to 55 kmph likely to commence from 27<sup>th</sup> November. It is very likely to increase thereafter, becoming squally winds speed reaching 40-50 kmph gusting to 60 kmph during 28<sup>th</sup> – 30<sup>th</sup> November.

**(iii) Sea Condition:**

**(a) South Andaman Sea, Strait of Malacca and along & off Nicobar Islands & adjoining Malaysia, western Indonesia & Thailand:**

Rough to very rough sea conditions are very likely during 25<sup>th</sup> to 27<sup>th</sup> November. Sea condition would gradually improve thereafter.

**(b) Adjoining areas of North Andaman Sea**

Moderate to rough sea conditions are very likely during 25<sup>th</sup> to 28<sup>th</sup> November.

**(c) Southeast Bay of Bengal:**

Moderate to rough sea conditions are very likely on 25<sup>th</sup> November, becoming rough to very rough during 26<sup>th</sup> to 28<sup>th</sup> November.

**(d) Southwest Bay of Bengal, Gulf of Mannar, Comorin area and along & off Tamil Nadu, Puducherry & Sri Lanka coasts**

Moderate to rough sea conditions are very likely on 25<sup>th</sup> and 26<sup>th</sup> November, becoming rough to very rough from 27<sup>th</sup> to 30<sup>th</sup> November.

**(e) Adjoining areas of Southeast Arabian Sea, Lakshadweep, Maldives and along & off Kerala coast:**

Moderate to rough sea conditions are very likely during 25<sup>th</sup> to 27<sup>th</sup> November.

**(e) Westcentral Bay of Bengal and along & off Andhra Pradesh coast:**

Moderate to rough sea conditions are very likely from 27<sup>th</sup> November, becoming rough to very rough during 28<sup>th</sup> to 30<sup>th</sup> November.

**(iv) Fishermen Warning:**

❖ Fishermen are advised not to venture into

(a) South Andaman Sea, Strait of Malacca and along & off Nicobar Islands & adjoining Malaysia, western Indonesia & Thailand till 28<sup>th</sup> November.

(b) Southeast Bay of Bengal during 25<sup>th</sup> to 28<sup>th</sup> November.

(c) Southwest Bay of Bengal, Gulf of Mannar, Comorin area and along & off Tamil Nadu, Puducherry & Sri Lanka coasts till 30<sup>th</sup> November

- (d) Adjoining areas of westcentral Bay of Bengal and along & off Andhra Pradesh coast from 27<sup>th</sup> to 30<sup>th</sup> November
- (e) Adjoining areas of Southeast Arabian Sea, Lakshadweep, Maldives and along & off Kerala coast during 25<sup>th</sup> to 27<sup>th</sup> November.

- ❖ Those out at sea should avoid South Andaman Sea, Strait of Malacca and along & off Nicobar Islands & adjoining Malaysia, western Indonesia & Thailand till 28<sup>th</sup>, Southeast Bay of Bengal during 26<sup>th</sup> to 28<sup>th</sup>, southwest Bay of Bengal till 30<sup>th</sup> and westcentral Bay of Bengal during 27<sup>th</sup> to 30<sup>th</sup> November.
- ❖ The fishermen along & off South Andhra Pradesh coast should return to coast before 27<sup>th</sup> November.

➤ **Impact Expected over Andaman & Nicobar Islands, Tamil Nadu & Puducherry, Kerala and Lakshadweep**

- ❖ Minor damage to Kutcha and some damage to Pucca roads. Flooding of escape routes.
- ❖ Damage to horticulture and standing crops due to inundation and wind.
- ❖ Localized Flooding of roads, water logging in low lying areas and closure of underpasses mainly in urban areas of the above region.
- ❖ Occasional reduction in visibility due to heavy rainfall.
- ❖ Disruption of traffic in city areas and roadways due to water logging in roads and poor visibility due to heavy rain leading to increased travel time and incidents
- ❖ Likely disruption of marine and inland water transportation like small boats and trawlers.
- ❖ Movement in motor boats unsafe

➤ **Action Suggested over Andaman & Nicobar Islands Tamil Nadu & Puducherry, Kerala and Lakshadweep**

- Judicious regulation of onshore/offshore, Port and maritime activities
- Judicious regulation of tourism activities in coastal areas.
- Judicious regulation of surface transports including railways and roadways.
- Avoid going to areas that face the water logging problems often.

**Next bulletin will be issued at 1430 hours IST of today, the 25<sup>th</sup> November, 2025.**

**(Monica Sharma)**  
**Scientist-E, RSMC & IMD, New Delhi**

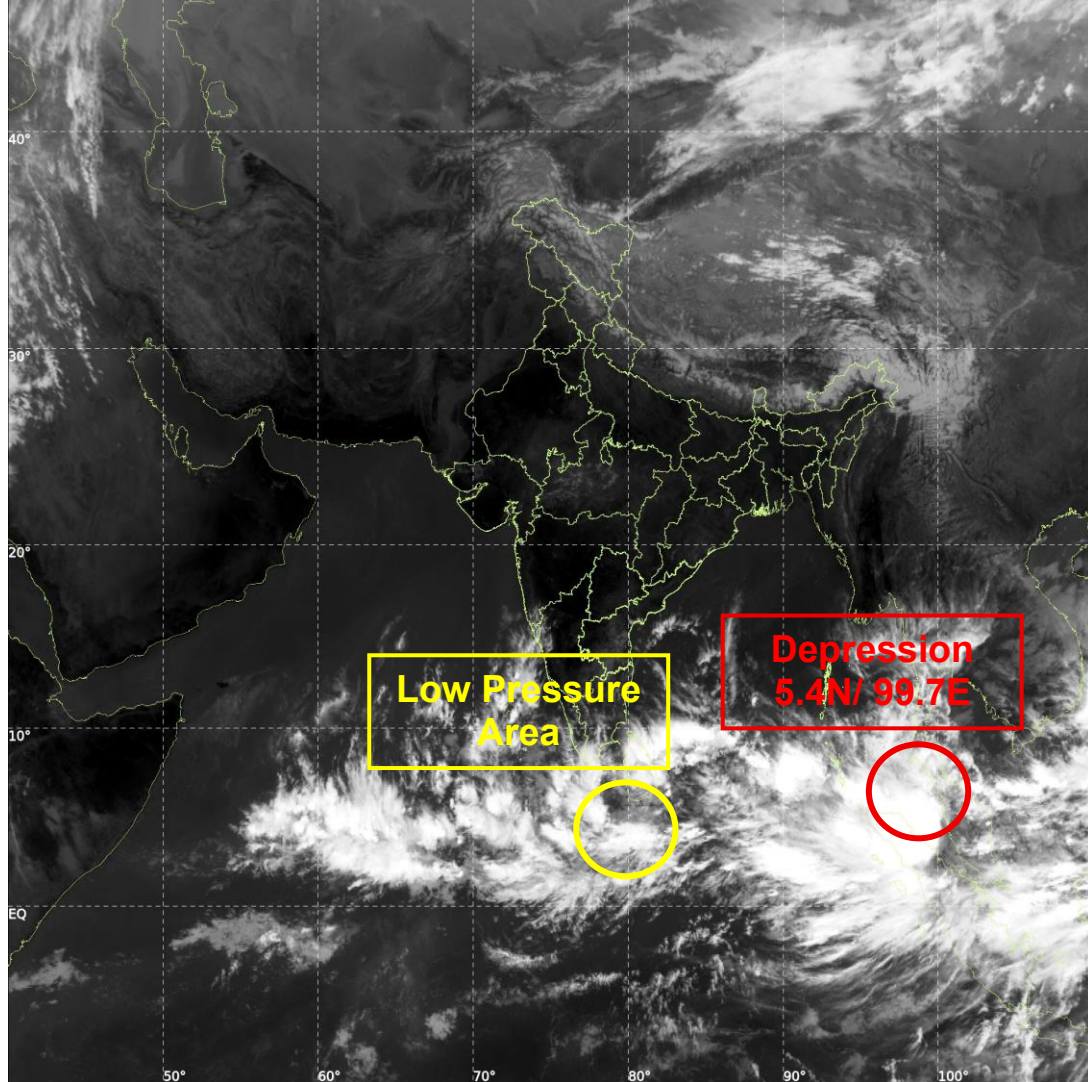
*Copy to: ACWC Kolkata/ACWC Chennai/CWC Bhubaneswar/CWC Vishakhapatnam/CWC Thiruvananthapuram/  
Meteorological Centre Port Blair/ and Meteorological Centre Amaravati/ Meteorological Centre Port Blair*



INSAT-3DS IMG, Thermal Infrared1 Count @ 10.83  $\mu\text{m}$   
GMT:25-11-2025/(0600-0627) IST:25-11-2025/(1130-1157)  
LIC MERCATOR (LINEAR STRETCH: 1%)

445

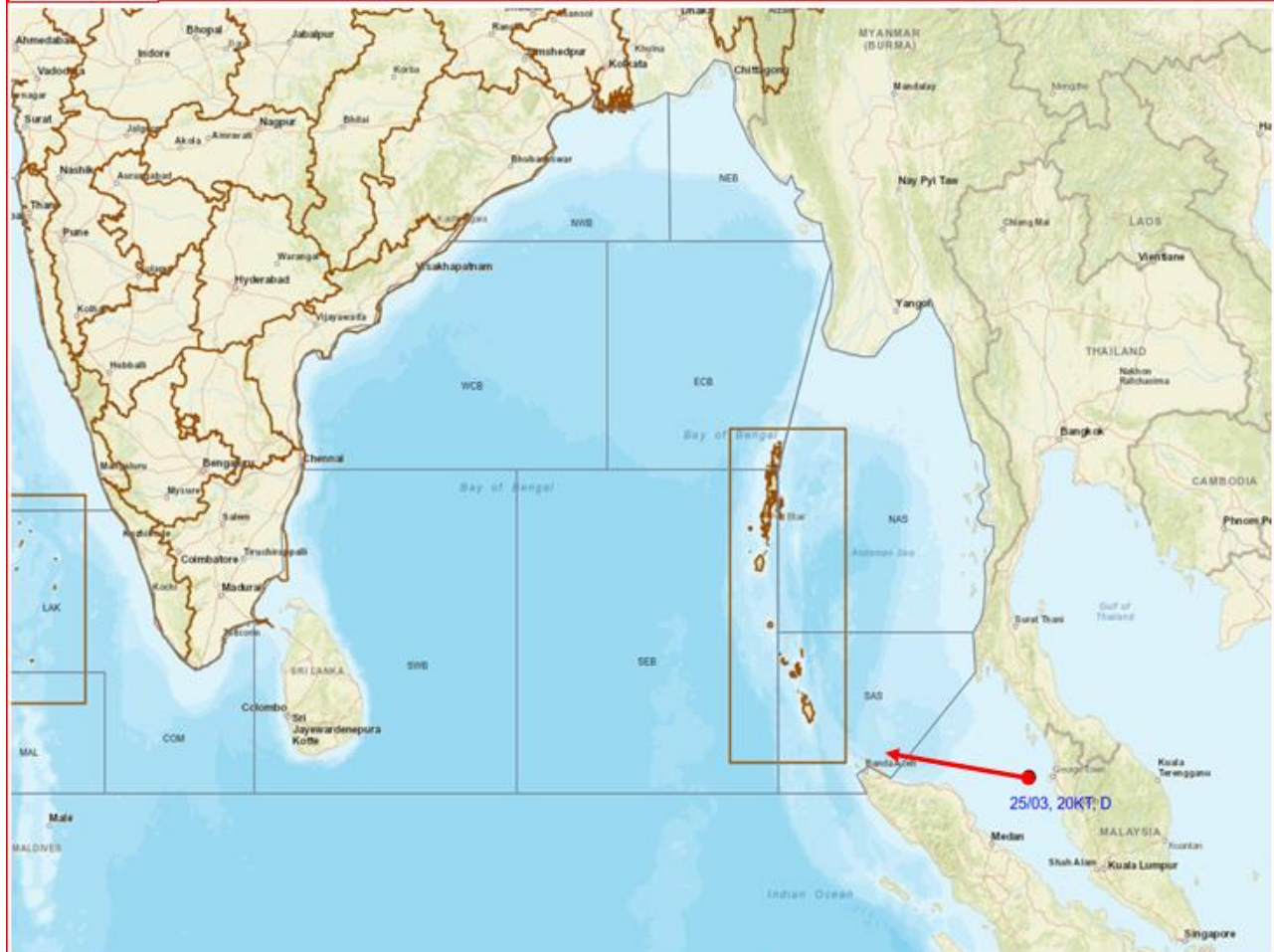
916







**OBSERVED AND FORECAST TRACK OF DEPRESSION OVER STRAIT OF MALACCA BASED ON 0300 UTC (0830 Hrs. IST) OF 25TH NOVEMBER 2025.**



**DATE/TIME IN UTC**

**IST=UTC + 0530**

**L: LOW PRESSURE AREA**

**WML: WELL MARKED LOW PRESSURE AREA**

**D: DEPRESSION (17-27 KT)**

**DD: DEEP DEPRESSION (28-33 KT)**

**CS: CYCLONIC STORM (34-47 KT)**

**SCS: SEVERE CYCLONIC STORM (48-63KT)**

**VSCS: VERY SEVERE CYCLONIC STORM (64-89 KT)**

**ESCS: EXTREMELY SEVERE CYCLONIC STORM (90-119 KT)**

**SuCS: SUPER CYCLONIC STORM ( $\geq 120$  KT)**



**LESS THAN 34 KT**



**34-47 KT**



**$\geq 48$  KT**



**OBSERVED TRACK**

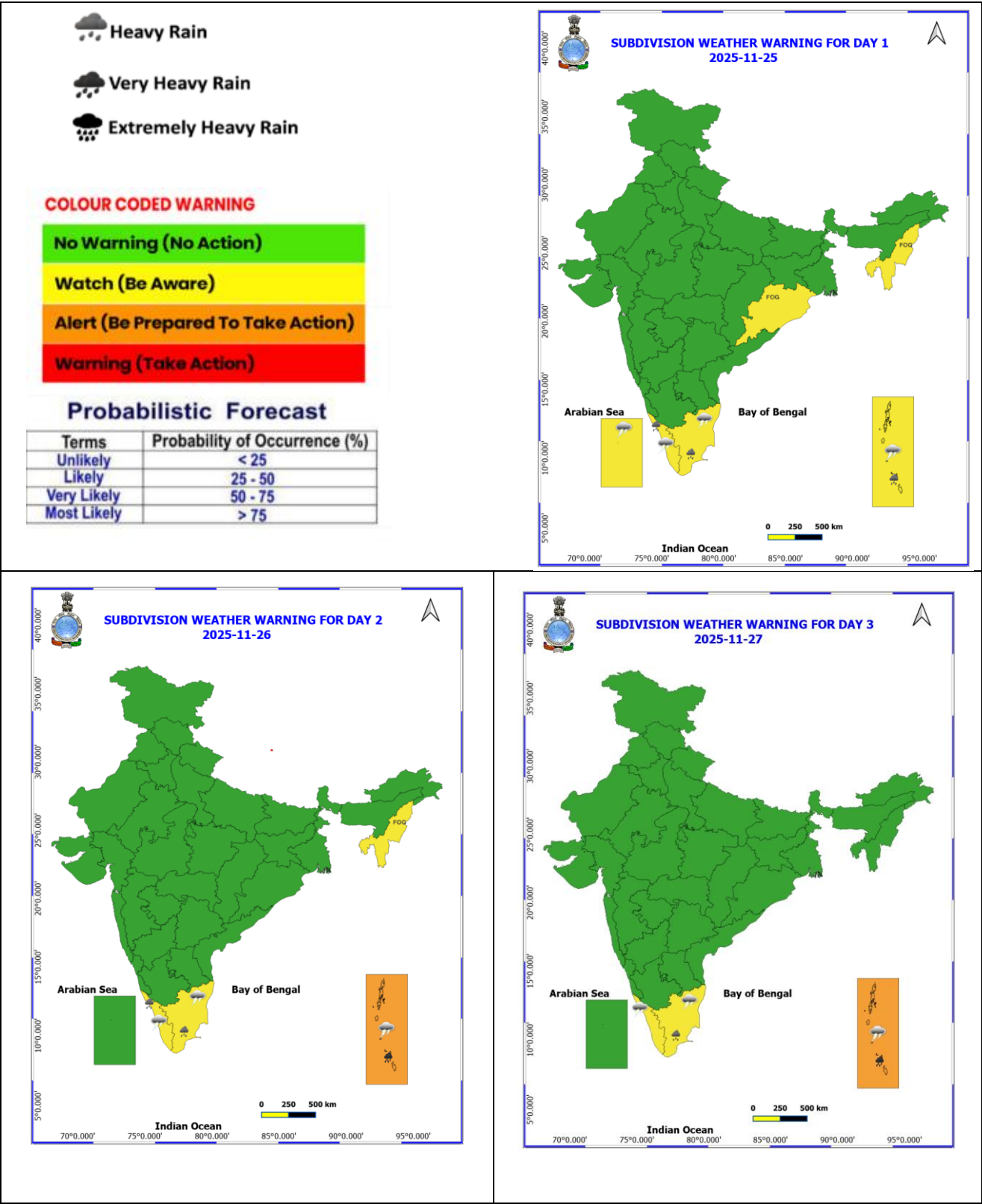


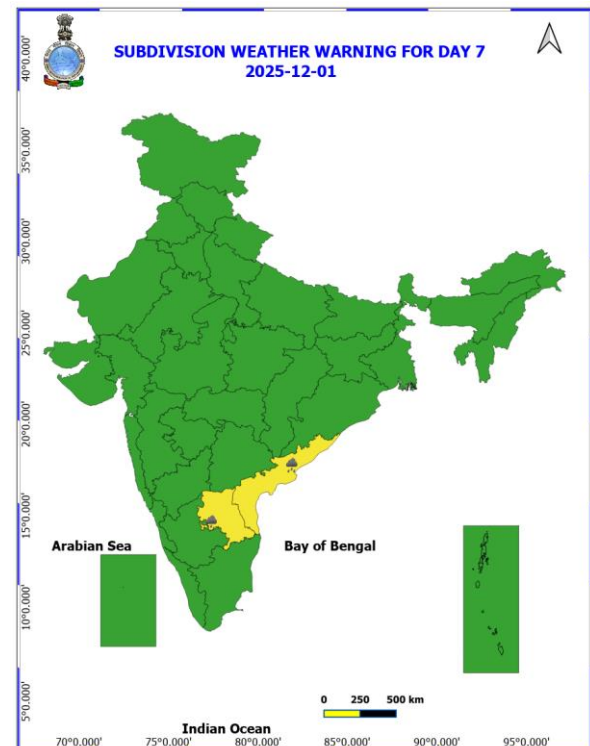
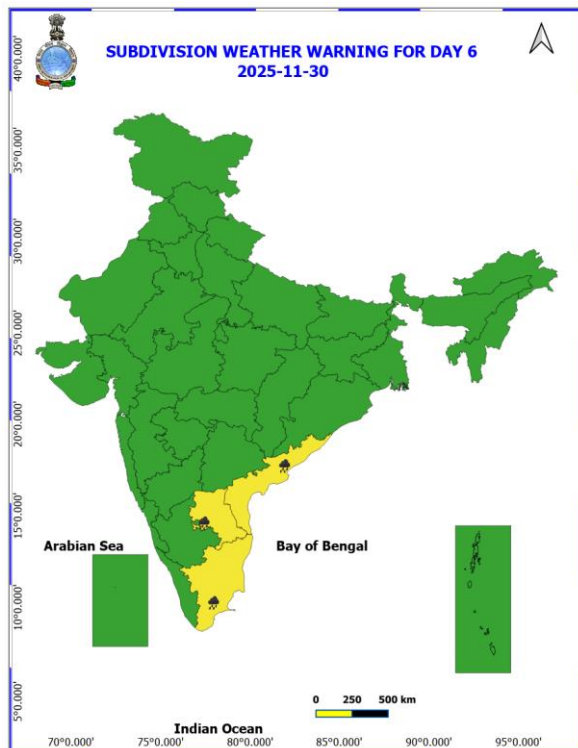
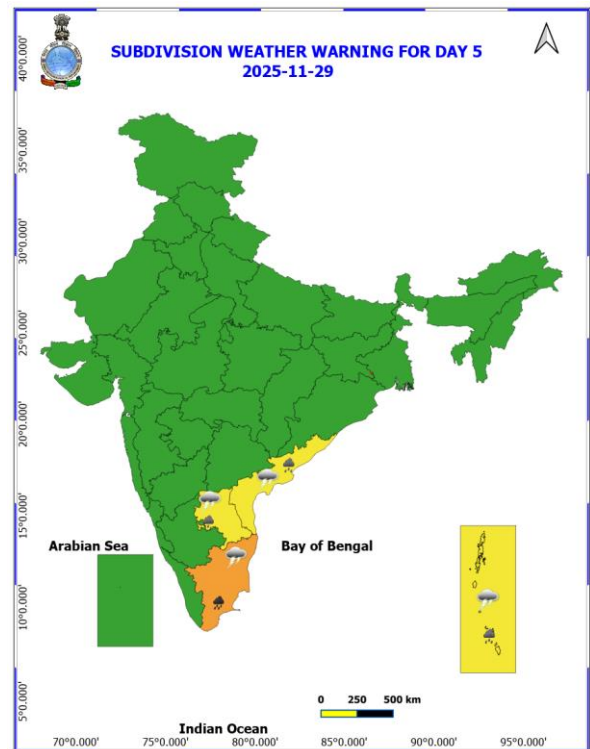
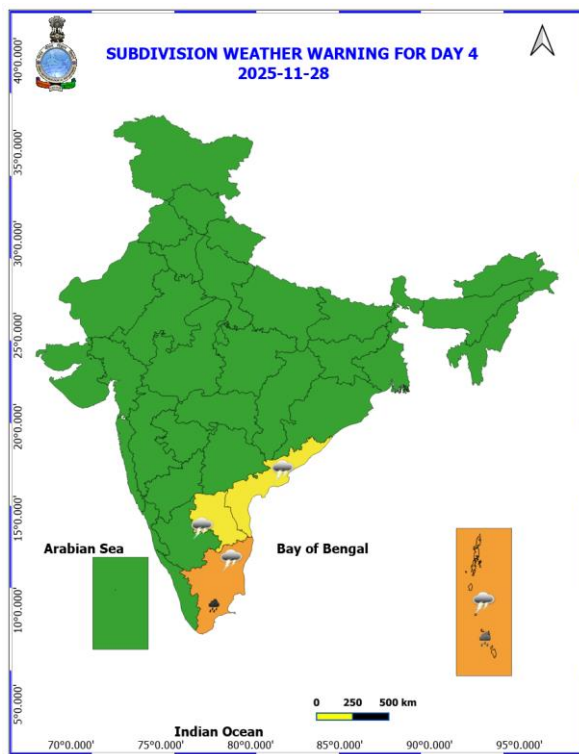
**FORECAST TRACK**



**CONE OF UNCERTAINTY**

# WEATHER WARNING GRAPHICS





- Action may be taken based on **ORANGE AND RED** COLOUR warnings.
- Vulnerable regions likely urban and hilly areas action may be initiated for heavy rainfall warning.
- As the lead period increases forecast accuracy decreases.



## Fishermen Warning Graphics

