



**India Meteorological Department
(Ministry of Earth Sciences)**

NATIONAL BULLETIN NO. 10 (Land/04/2025)

TIME OF ISSUE: 2100 HOURS IST

DATED: 08.09.2025

FROM: INDIA METEOROLOGICAL DEPARTMENT (FAX NO. 24643965/24699216/24623220)

TO: CONTROL ROOM, NDM, MINISTRY OF HOME AFFAIRS (FAX.NO. 23093750)

CONTROL ROOM NDMA (FAX.NO. 26701729)

CABINET SECRETARIAT (FAX.NO.23012284, 23018638)

PS TO HON'BLE MINISTER FOR S & T AND EARTH SCIENCES (FAX NO.23316745)

SECRETARY, MOES (FAX NO. 24629777)

H.Q. (INTEGRATED DEFENCE STAFF AND CDS) (FAX NO. 23005137/23005147)

DIRECTOR GENERAL, DOORDARSHAN (23385843)

DIRECTOR GENERAL, AIR (23421105, 23421219)

PIB MOES (FAX NO. 23389042)

UNI (FAX NO. 23355841)

D.G. NATIONAL DISASTER RESPONSE FORCE (NDRF) (FAX NO. 26105912, 2436 3260)

DIRECTOR, PUNCTUALITY, INDIAN RAILWAYS (FAX NO. 23388503)

CHIEF SECRETARY, GOVT. OF RAJASTHAN (FAX NO. 0141-2227114)

CHIEF SECRETARY, GOVT. OF GUJARAT (FAX NO. +9179 23250305)

CHIEF SECRETARY, GOVT. OF MAHARASHTRA (FAX NO. +9122 22028594)

CHIEF SECRETARY, DAMAN & DIU (FAX NO. 0260-2230775)

CHIEF SECRETARY, DADRA & NAGAR HAVELI (FAX NO. 0260-2645466)

CHIEF SECRETARY, GOA (FAX NO. 0832-2415201)

Subject: Deep Depression over southeast Pakistan and adjoining Rajasthan

The deep depression over Southeast Pakistan and adjoining Rajasthan & Kutch moved northwestwards with the speed of 15 kmph during past 6 hours and lay centred at 1730 hrs IST of today, the 08th September, 2025, over southeast Pakistan and adjoining Rajasthan, near latitude 25.8°N and longitude 69.5°E, about 40 km northwest of Chhor (Pakistan), 120 km east-northeast of Hyderabad (Pakistan), 120 km east-southeast of Nawabshah (Pakistan), 190 km west of Barmer (Rajasthan) and 190 km southwest of Jaisalmer (Rajasthan).

It is very likely to move nearly west-northwestwards across southeast Pakistan and adjoining Rajasthan and weaken gradually into a depression during next 12 hours.

Warnings:

(i) Rainfall Warning:

North Gujarat Region and Saurashtra & Kutch: Light to moderate rainfall at most places with **heavy to very heavy rainfall (7-20 cm)** at isolated places over Saurashtra & Kutch on 8th September. **Heavy rainfall at isolated places** is likely over the Kutch region on 9th September.

West Rajasthan: Light to moderate rainfall at most places with **heavy to very heavy rainfall** at isolated places is very likely over southwest Rajasthan on 08th and heavy rainfall at isolated places on 9th September.

(ii) Wind Warnings:

- Squally weather with wind speed reaching 45-55 kmph gusting to 65 kmph is likely to prevail over northeast Arabian Sea and along & off Gujarat coast till 9th September 2025 and decrease thereafter.

- Squally wind speed reaching 45-55 kmph gusting to 65 kmph is likely over southwest Rajasthan and Kutch region on 8th September and decrease thereafter.

(iii) Sea condition: Sea condition is likely to be rough to very rough over northeast Arabian Sea and along & off Gujarat coast till 9th September 2025 and improve thereafter.

(iv) Warning:

- Fishermen are advised not to venture into northeast Arabian Sea and along & off Gujarat coast till 9th September 2025.
- Small ships/shipping activities are to be monitored and regulated till 9th September 2025.
- Judicious regulation of tourism, recreational and onshore/off shore operations till 9th September.

(v) Impact Expected and Action Suggested due to very heavy rainfall and squally winds over south Rajasthan and Gujarat state

Impact expected:

- ❖ Heavy rainfall may damage plantation, horticulture and standing crops.
- ❖ Partial damage to vulnerable structures due to heavy rain.
- ❖ Minor damage to kutcha houses/walls, huts and roads due to heavy rain.
- ❖ Road and rail traffic may be affected due to heavy rain.
- ❖ There could be localised landslides, mudslides, landslips in the hilly areas and water logging, inundation and flooding over low lying areas.
- ❖ Occasional reduction in visibility due to heavy rainfall.
- ❖ Helicopter services may get affected.

Action suggested:

- ❖ People are advised to keep a watch on the weather for worsening conditions and be ready to move to safer places accordingly.
- ❖ Take safe shelters; do not take shelter under trees, as there could be lightning.
- ❖ In case of expected lightning, unplug electrical/ electronic appliances, immediately, get out of water bodies and keep away from all the objects that conduct electricity.
- ❖ Tourism and recreational activities to be regulated.
- ❖ Helicopter services to be regulated.
- ❖ Avoid moving into vulnerable areas, as the surface transport and vehicular movement may be affected due to rain and wind

Significant amount of rainfalls accumulated from 0830 hours IST to 1730 hours IST of today, the 8th September, 2025 at different stations is given in Annexure-1

Next bulletin will be issued at 0230 hrs IST of tomorrow, the 09th September, 2025.

(Ananda Kumar Das)

Scientist-F, IMD, New Delhi

Copy to: Regional Meteorological Centres- Mumbai, Meteorological Centres Ahmedabad, Jaipur.



**OBSERVED AND FORECAST TRACK OF DEEP DEPRESSION OVER
SOUTHEAST PAKISTAN & ADJOINING RAJASTHAN BASED ON 1200
UTC (1730 IST) OF 08th SEP, 2025.**



DATE/TIME IN UTC

IST=UTC + 0530

L: LOW PRESSURE AREA

WML: WELL MARKED LOW PRESSURE AREA

D: DEPRESSION (17-27 KT)

DD: DEEP DEPRESSION (28-33 KT)

CS: CYCLONIC STORM (34-47 KT)

SCS: SEVERE CYCLONIC STORM (48-63 KT)

VSCS: VERY SEVERE CYCLONIC STORM (64-89 KT)

ESCS: EXTREMELY SEVERE CYCLONIC STORM (90-119 KT)

SuCS: SUPER CYCLONIC STORM \geq 120 KT)

● LESS THAN 34 KT

○ 34-47 KT

○ \geq 48 KT

— OBSERVED TRACK

— FORECAST TRACK

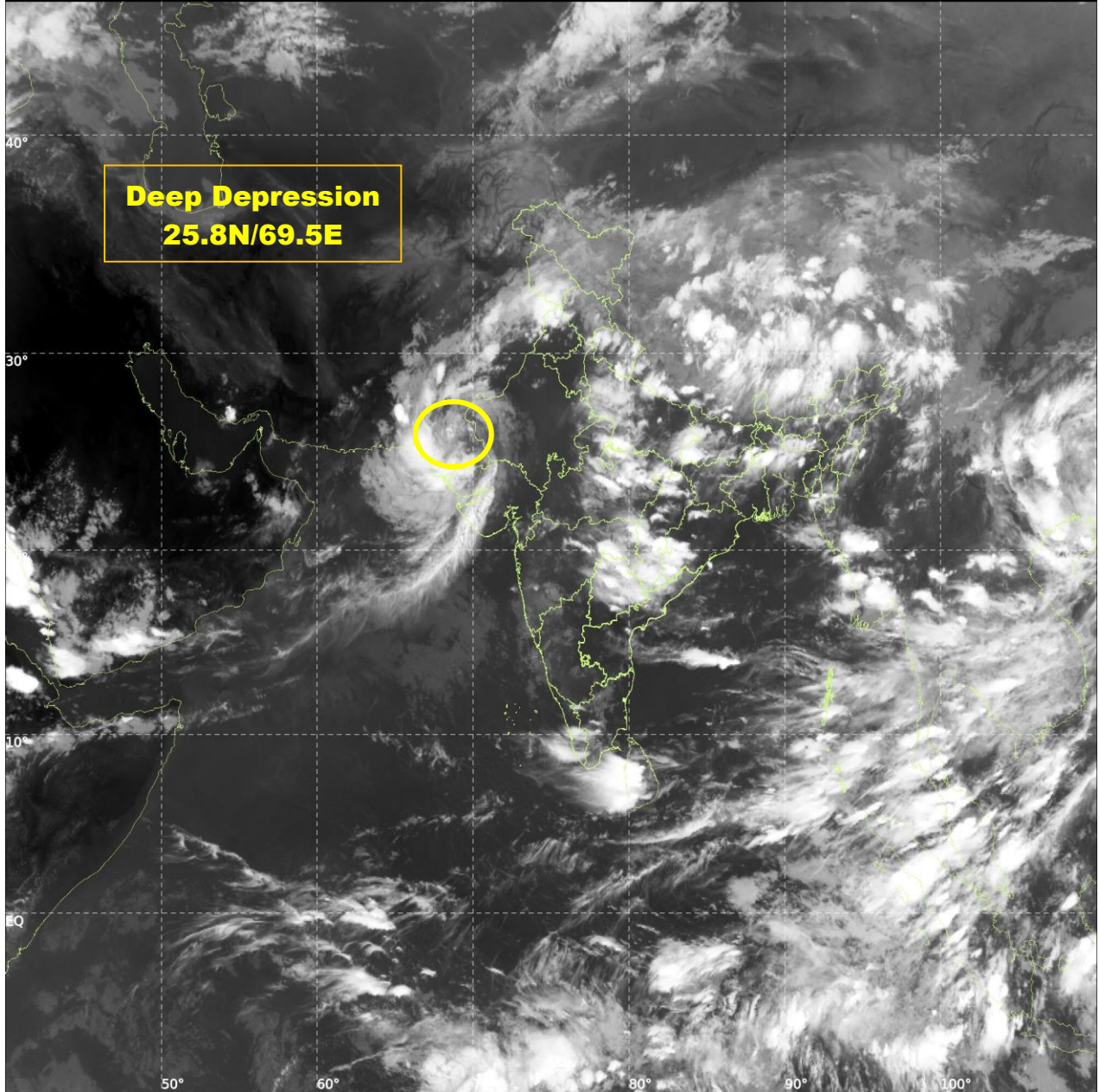
▲ CONE OF UNCERTAINTY



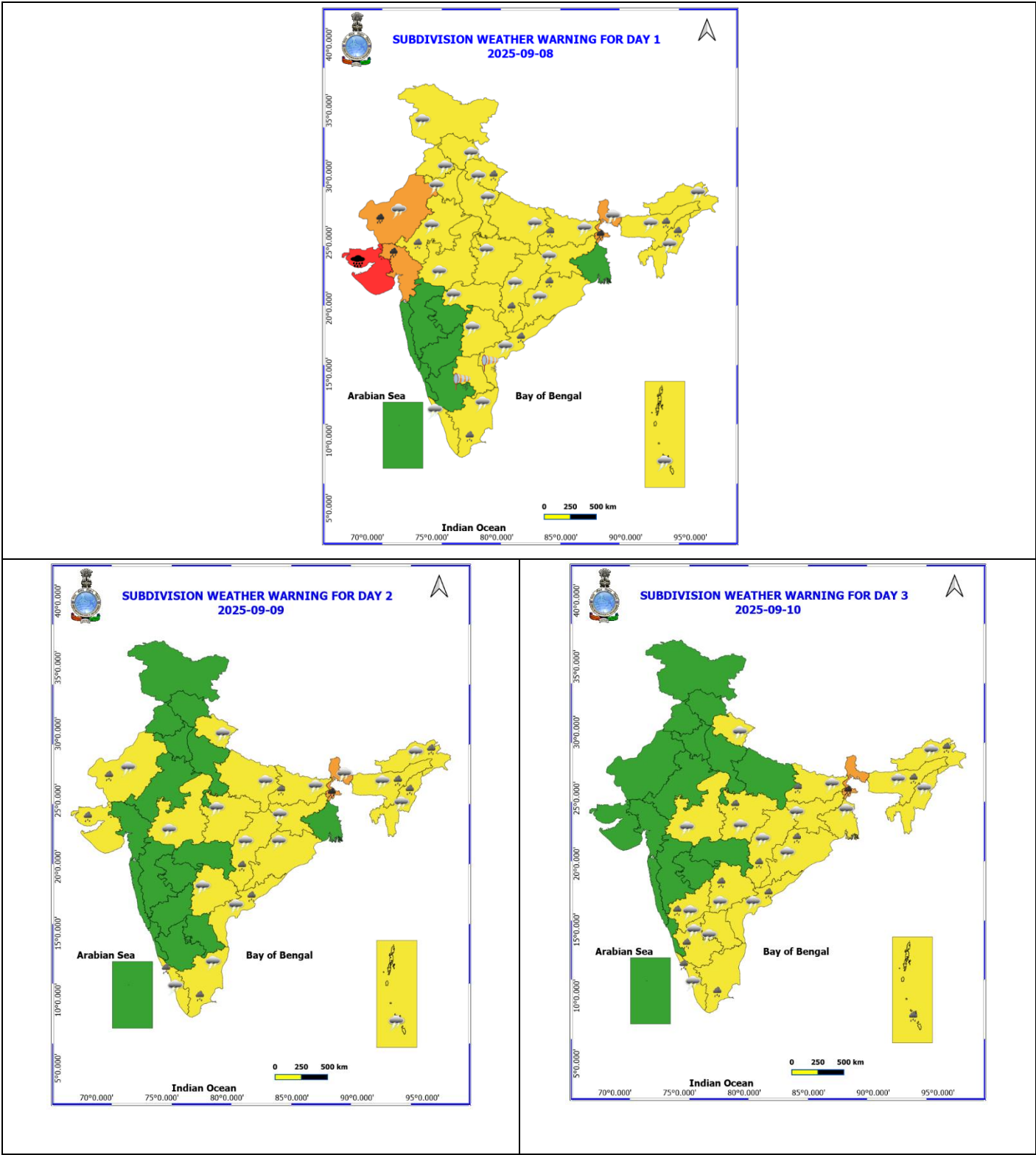
INSAT-3DS IMG, Thermal Infrared1 Count @ 10.83 μm
GMT:08-09-2025/(1400-1427) IST:08-09-2025/(1930-1957)
L1C MERCATOR (LINEAR STRETCH: 1%)

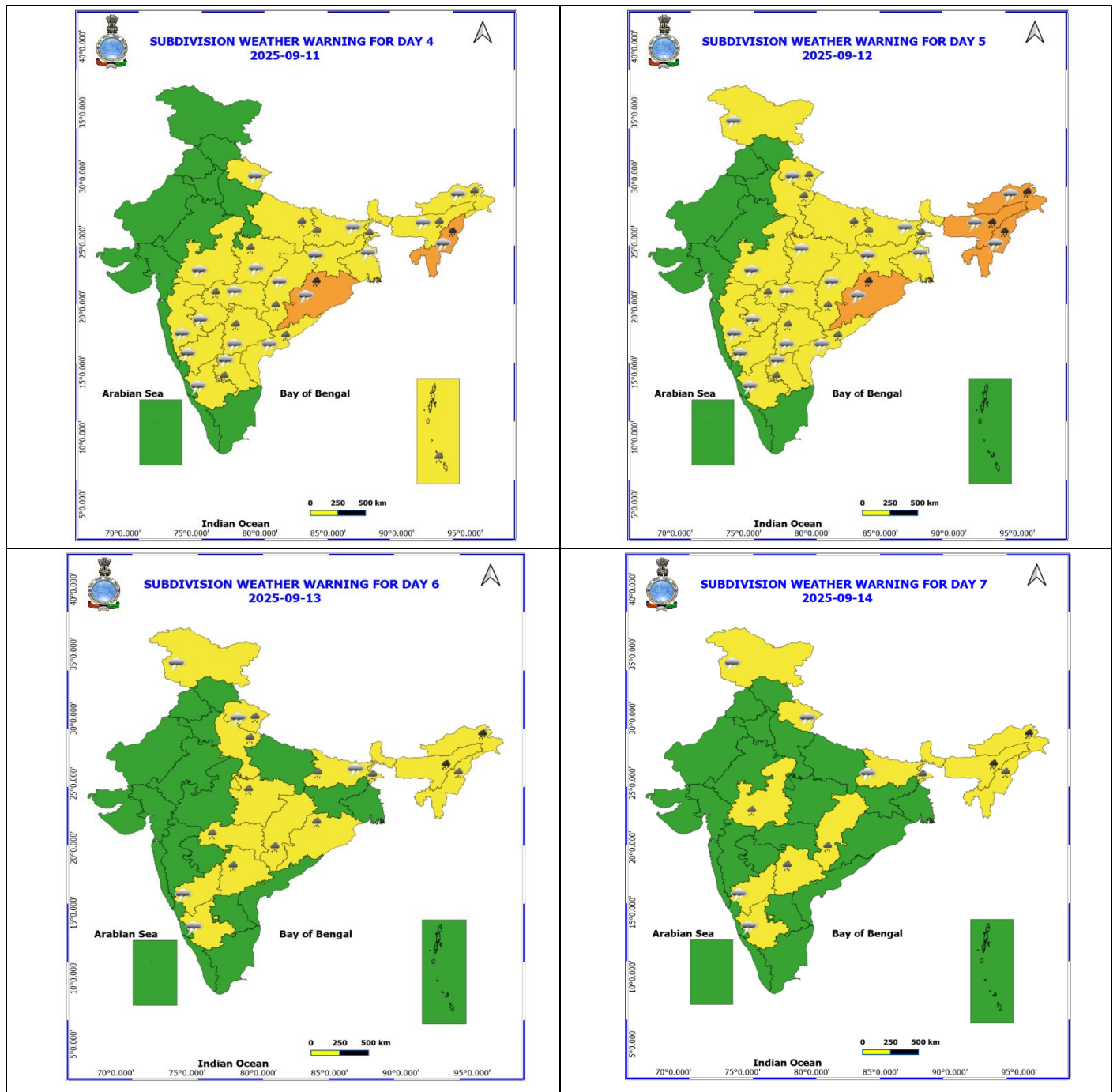
411

913



Weather Warning Graphics



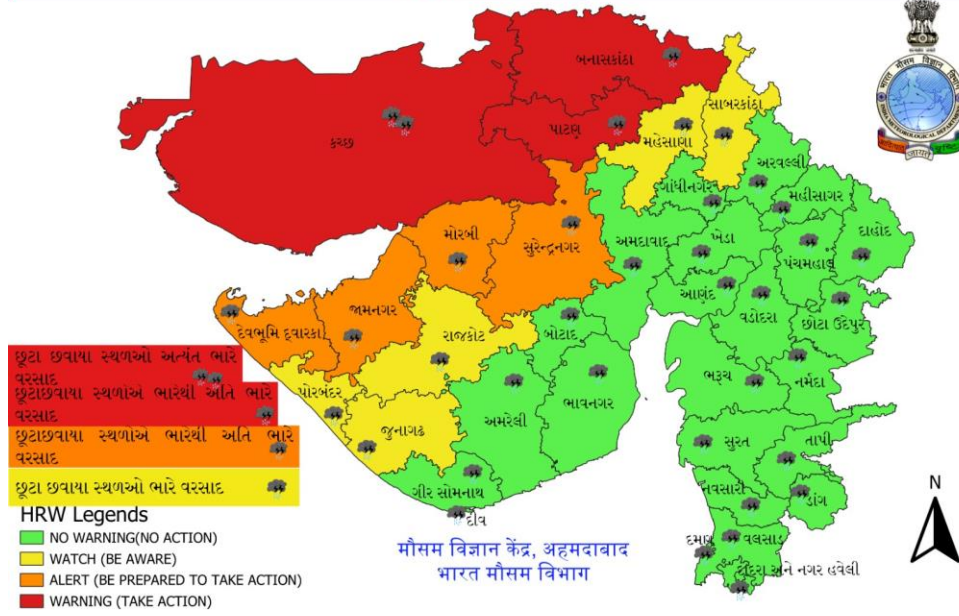


- Action may be taken based on **ORANGE AND RED** COLOUR warnings.
- Vulnerable regions likely urban and hilly areas action may be initiated for heavy rainfall warning.
- As the lead period increases forecast accuracy decreases.

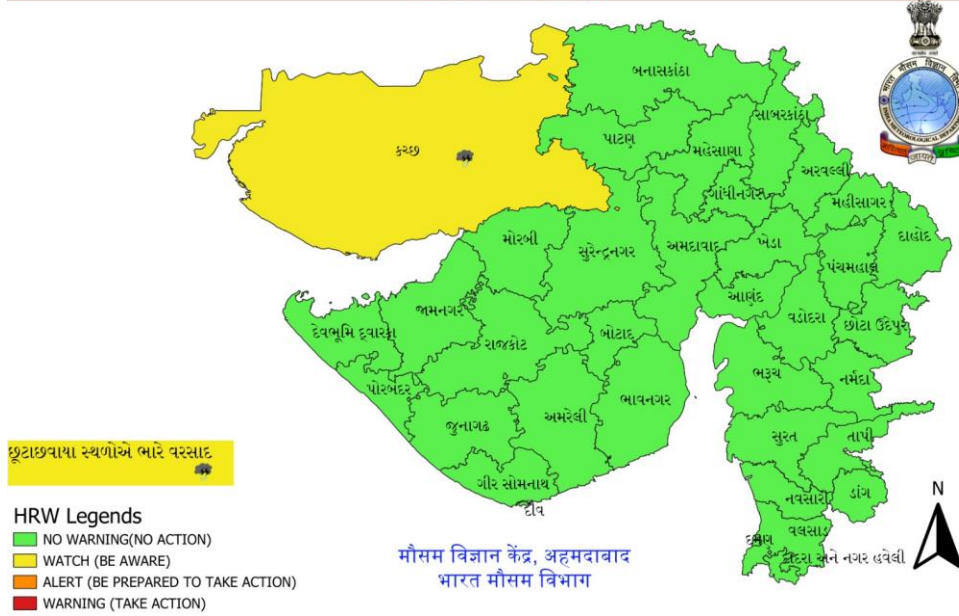
No Warning	Watch	Alert	Warning	Heavy Rain
Very Heavy Rain	Extremely Heavy Rain	Heavy Snow	Thunderstorm & Lightning	Hailstorm
Dust Storm	Dust Raising Winds	Strong Surface Winds	Heat Wave	Hot Day
Hot and Humid	Warm Night	Cold Wave	Cold Day	Ground Frost
Fog				

District-wise Rainfall Warning Graphics for Gujarat State

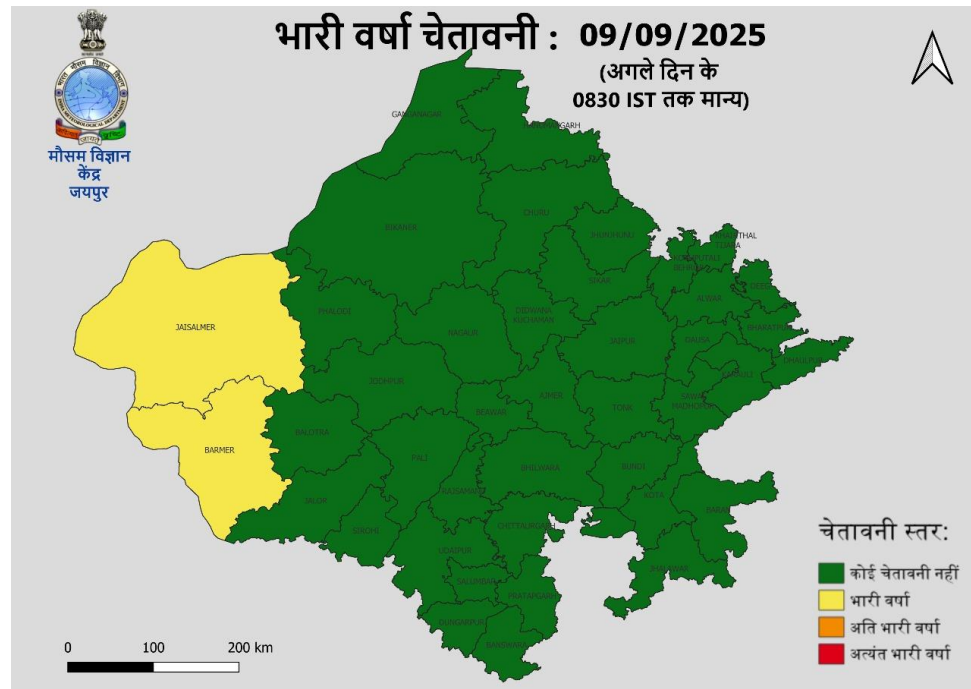
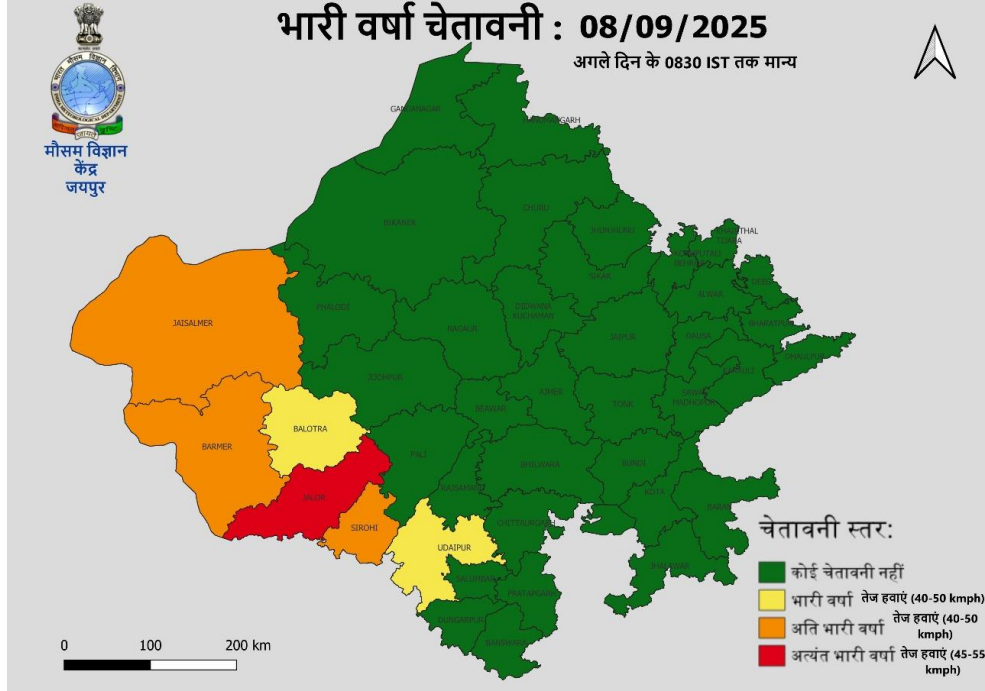
દિવસ - 1 ગુજરાત રાજ્ય અને દીવ, દમણ, દાદરા નગર હવેલી ની 08-09-2025 માટે
' ભારે વરસાદ ની ચેતવણી '



દિવસ - 2 ગુજરાત રાજ્ય અને દીવ, દમણ દાદરા નગર હવેલી ની 09-09-2025 માટે
' ભારે વરસાદ ની ચેતવણી '



District-wise Rainfall Warning Graphics for Rajasthan State



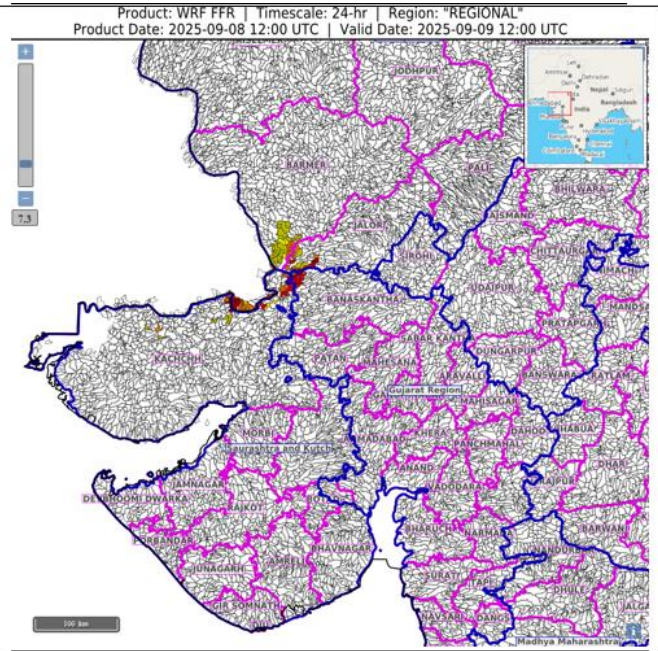
Flash Flood Guidance

24 hours Outlook for the Flash Flood Risk (FFR) till 1730 IST of 09-09-2025 :




Low to Moderate flash flood risk likely over few watersheds & neighbourhoods of following Met Sub-divisions during next 24 hours.

West Rajasthan - Barmer and Jalor districts.
Gujarat Region - Banaskantha, districts.
Saurashtra & Kutch - Kachchh district.

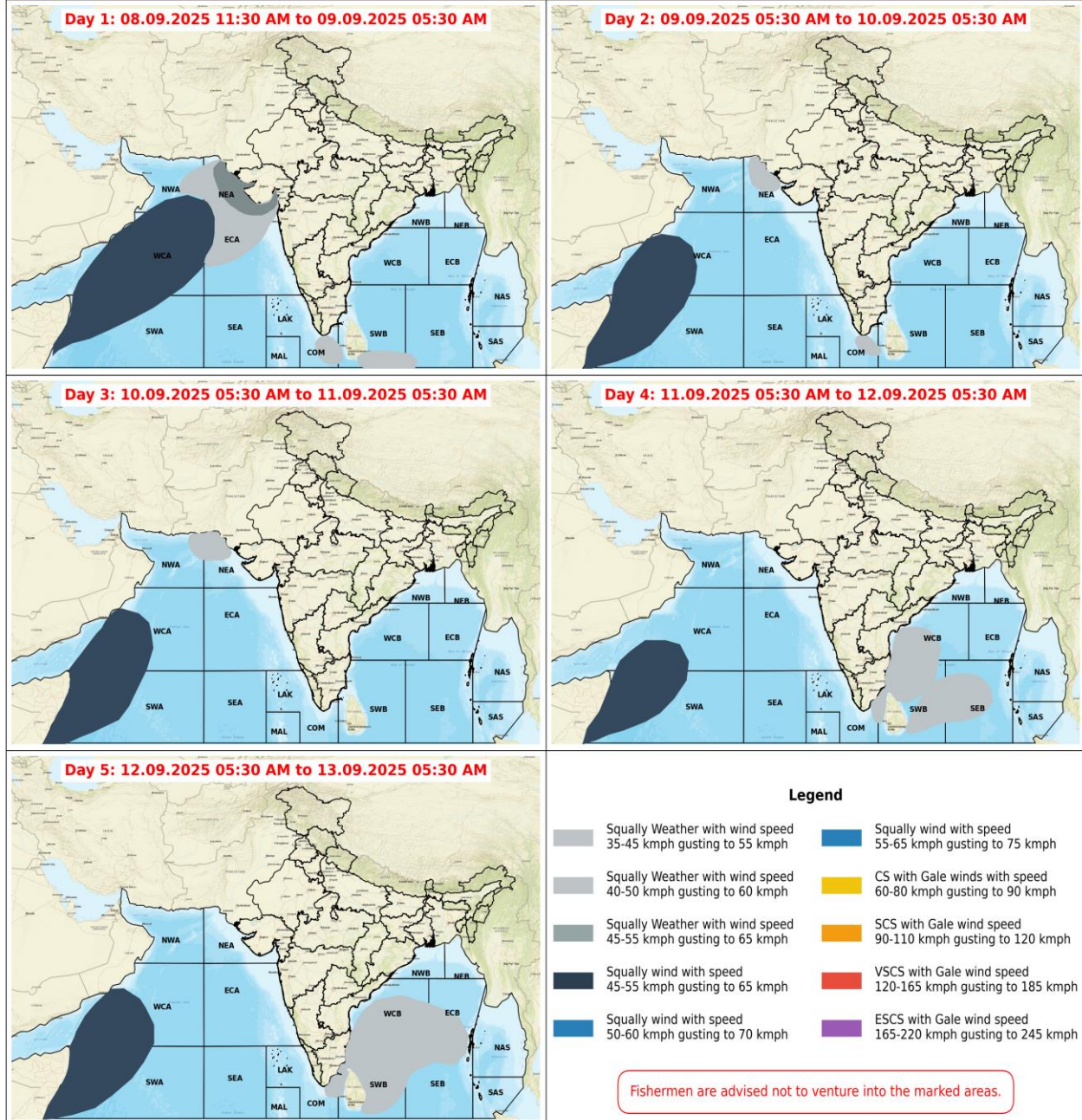
Surface runoff/ Inundation may occur at some fully saturated soils & low-lying areas over Area of Concern (AoC) as shown in map due to expected rainfall occurrence in next 24 hours.



Flash Flood Risk

	High Risk (Take Action)
	Moderate Risk (Be Prepared)
	Low Risk (Be Updated)

Fishermen Warning Graphics



Significant rainfall recorded (in cm) from 0830 hours IST to 1730 hours IST of today:

Saurashtra & Kutch: Bhuj (Kachchh) 8, Kandla AP (Kachchh) 5, Naliya, New Kandla (Kachchh) 4 Each;