



**REGIONAL SPECIALISED METEOROLOGICAL CENTRE -TROPICAL CYCLONES, NEW DELHI**  
**TROPICAL WEATHER OUTLOOK**

**DEMS-RSMC TROPICAL CYCLONES NEW DELHI DATED 10.02.2026**

**TROPICAL WEATHER OUTLOOK FOR THE NORTH INDIAN OCEAN (THE BAY OF BENGAL AND THE ARABIAN SEA) VALID FOR THE NEXT 168 HOURS ISSUED AT 0600 UTC OF 10.02.2026 BASED ON 0300 UTC OF 10.02.2026.**

**BAY OF BENGAL:**

A fresh upper air cyclonic circulation lay over east Equatorial Indian Ocean and adjoining southeast Bay of Bengal at 3.1 km above mean sea level at 0300 UTC of today, the 10<sup>th</sup> February, 2026.

Scattered low to medium clouds with embedded moderate to intense convection lay over the southern Bay of Bengal. Scattered low to medium clouds with embedded isolated weak to moderate convection lay over the central Bay of Bengal.

**PROBABILITY OF CYCLOGENESIS (FORMATION OF DEPRESSION) DURING NEXT 168 HRS)**

24 HOURS	24-48 HOURS	48-72 HOURS	72-96 HOURS	96-120 HOURS	120-144 HOURS	144-168 HOURS
NIL	NIL	NIL	NIL	NIL	NIL	NIL

**\*NOTE: EVERY 24HR FORECAST IS VALID UPTO 0300 UTC (0830 IST) OF NEXT DAY**

**ARABIAN SEA:**

Scattered low to medium clouds with embedded weak to moderate convection are present over the Lakshadweep Islands area and the Comorin area.

**\*PROBABILITY OF CYCLOGENESIS (FORMATION OF DEPRESSION) DURING NEXT 168 HRS:**

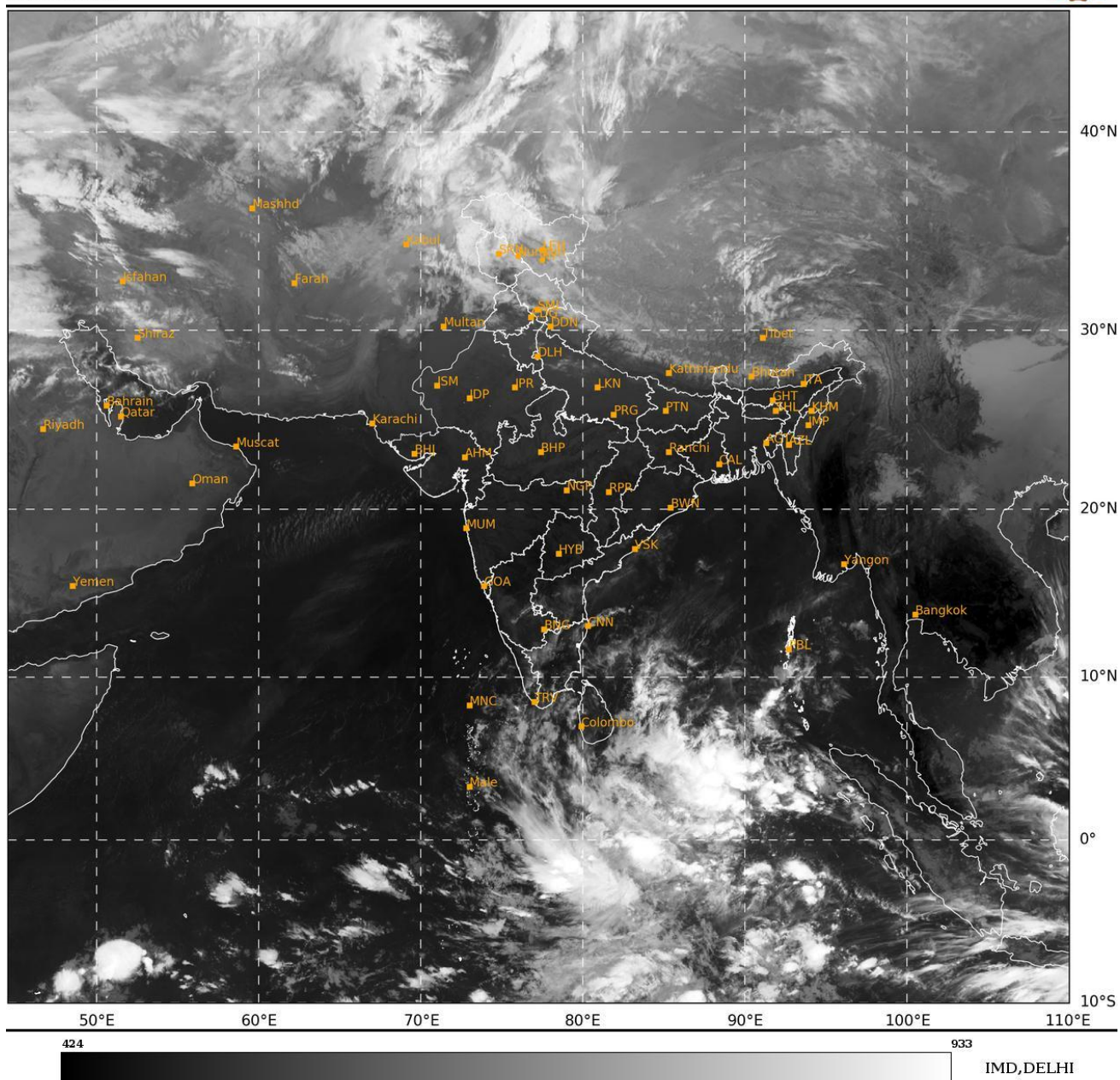
24 HOURS	24-48 HOURS	48-72 HOURS	72-96 HOURS	96-120 HOURS	120-144 HOURS	144-168 HOURS
NIL	NIL	NIL	NIL	NIL	NIL	NIL

**\*NOTE: EVERY 24HR FORECAST IS VALID UPTO 0300 UTC (0830 IST) OF NEXT DAY**

**REMARKS:** Nil

SAT : INSAT-3DR IMG  
IMG\_TIR1 10.8 um  
L1C Mercator

10-02-2026/(0315 to 0342) GMT  
10-02-2026/(0845 to 0912) IST



Cloud distribution: (a) Isolated: <25%, Scattered:25-50%, Broken: 51-75%, Solid:>75%, Convection Intensity: (a) Weak: Cloud Top Temperature(CTT)>-25°C, (b) Moderate: CTT:-25°Cto-40°C, (c) Intense: CTT: -41°Cto -70°C and (d) Very Intense:Less than -70°C Probability of cyclogenesis (formation of depression) :NIL:0%, LOW:1-33%, MODERATE:34-66% and HIGH:67-100%  
This is a guidance Bulletin for WMO/ESCAP Panel Member countries. Visit respective National websites for Country specific Bulletins.