



REGIONAL SPECIALISED METEOROLOGICAL CENTRE-TROPICAL CYCLONES, NEW DELHI  
TROPICAL WEATHER OUTLOOK

DEMS-RSMC TROPICAL CYCLONES NEW DELHI DATED 07.09.2020

TROPICAL WEATHER OUTLOOK FOR NORTH INDIAN OCEAN (THE BAY OF BENGAL AND ARABIAN SEA) VALID FOR NEXT 120 HOURS ISSUED AT 0600 UTC OF 07.09.2020 BASED ON 0300 UTC OF 07.09.2020 .

**BAY OF BENGAL:**

SCATTERED LOW AND MEDIUM CLOUDS WITH EMBEDDED INTENSE TO VERY INTENSE CONVECTION LAY OVER SOUTH BAY OF BENGAL AND ANDAMAN SEA AND MODERATE TO INTENSE CONVECTION OVER WESTCENTRAL BAY OF BENGAL AND GULF OF MARTABAN.

**PROBABILITY OF CYCLOGENESIS DURING NEXT 120 HRS:**

24 HOURS	24-48 HOURS	48-72 HOURS	72-96 HOURS	96-120 HOURS
NIL	NIL	NIL	NIL	NIL

**ARABIAN SEA:**

A LOW PRESSURE AREA FORMED OVER SOUTHEAST AND ADJOINING EASTCENTRAL ARABIAN SEA ON 6<sup>TH</sup> SEPTEMBER. AT 0300 UTC OF TODAY, THE 07<sup>TH</sup> SEPTEMBER, 2020 IT LAY OVER EASTCENTRAL ARABIAN SEA OFF KARNATAKA COAST. IT IS VERY LIKELY TO WEAKEN OVER THE SAME REGION DURING NEXT 24 HOURS.

SCATTERED TO BROKEN LOW AND MEDIUM CLOUDS WITH EMBEDDED INTENSE TO VERY INTENSE CONVECTION LAY OVER SOUTHEAST ADJOINING EASTCENTRAL ARABIAN SEA AND MODERATE TO INTENSE CONVECTION OVER WESTCENTRAL & SOUTHWEST ARABIAN SEA.

**PROBABILITY OF CYCLOGENESIS DURING NEXT 120 HRS :**

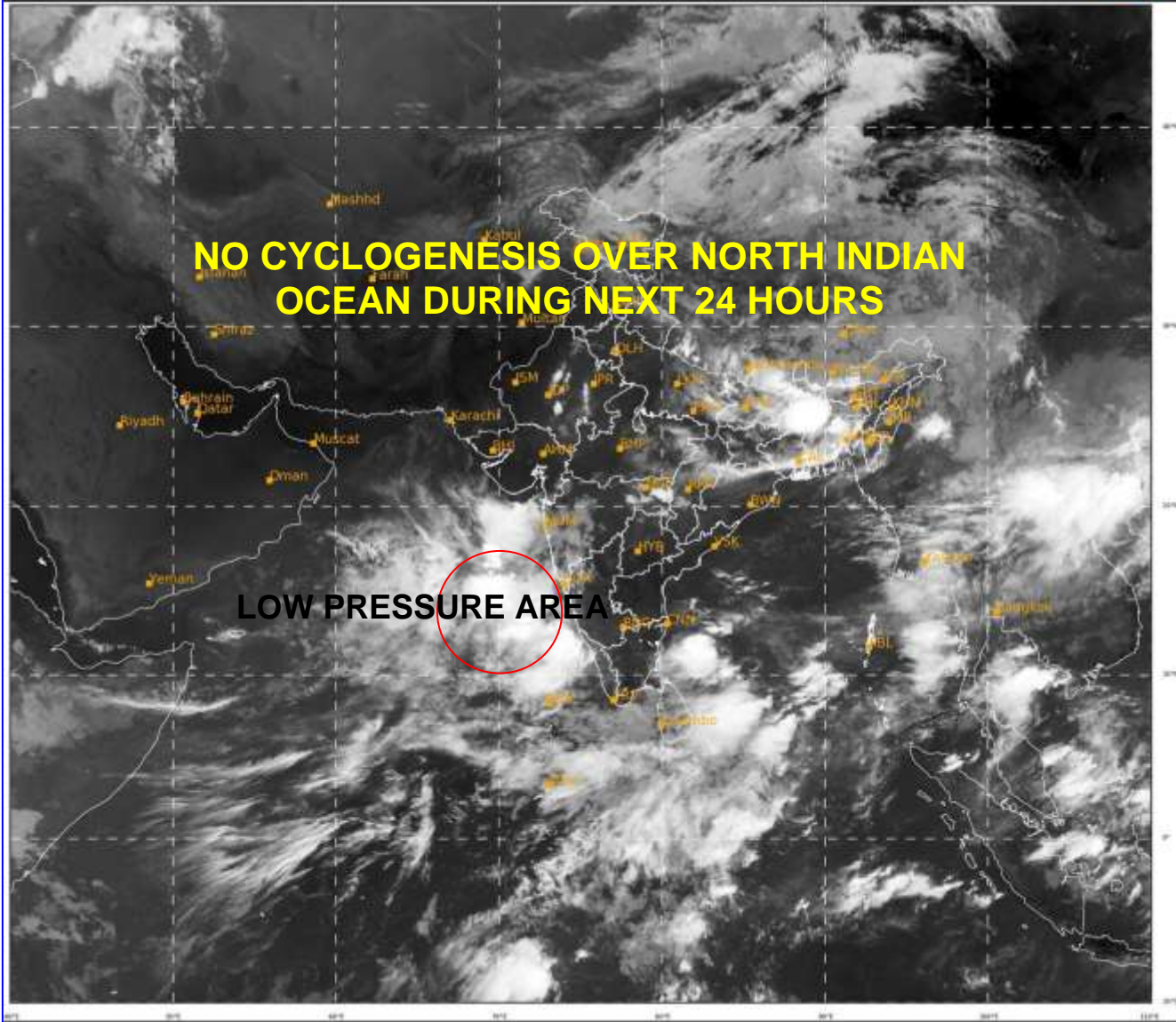
24 HOURS	24-48 HOURS	48-72 HOURS	72-96 HOURS	96-120 HOURS
NIL	NIL	NIL	NIL	NIL

**REMARKS:**

Nil

SAT : INSAT-3D IMG  
IMG\_TIR1 10.8 um  
LIC Mercator

07-09-2020(0300 to 0326) GMT  
07-09-2020(0830 to 0856) IST



428

936

IMD, DELHI

PROBABILITY OF CYCLOGENESIS (FORMATION OF DEPRESSION):NIL: 0%, LOW: 1-25%, FAIR: 26-50%, MODERATE: 51-75% AND HIGH: 76-100%



This is a guidance Bulletin for the WMO/ESCAP Panel Member countries,. Please visit respective National websites for Country specific Bulletins