



REGIONAL SPECIALISED METEOROLOGICAL CENTRE-TROPICAL CYCLONES, NEW DELHI  
TROPICAL WEATHER OUTLOOK

**DEMS-RSMC TROPICAL CYCLONES NEW DELHI DATED 05.08.2020**

**TROPICAL WEATHER OUTLOOK FOR NORTH INDIAN OCEAN (THE BAY OF BENGAL AND ARABIAN SEA) VALID FOR NEXT 120 HOURS ISSUED AT 0600 UTC OF 05.08.2020 BASED ON 0300 UTC OF 05.08.2020.**

**BAY OF BENGAL:**

YESTERDAY'S LOW PRESSURE AREA OVER NORTH BAY OF BENGAL OFF WEST BENGAL – BANGLADESH COASTS BECAME A WELL MARKED LOW PRESSURE AREA OVER NORTHWEST BAY OF BENGAL OFF NORTH ODISHA - WEST BENGAL COASTS BY THE EVENING OF YESTERDAY. IT LAY OVER THE WELL MARKED LOW PRESSURE AREA OVER NORTHWEST BAY OF BENGAL OFF NORTH ODISHA-WEST BENGAL COASTS NOW LIES OVER NORTHWEST BAY OF BENGAL ADJOINING NORTH ODISHA AND WEST BENGAL COASTS

SCATTERED LOW AND MEDIUM CLOUDS WITH EMBEDDED INTENSE TO VERY INTENSE CONVECTION OVER NORTH & CENTRAL BAY OF BENGAL NORTH ANDAMAN SEA. SCATTERED LOW AND MEDIUM CLOUDS WITH EMBEDDED MODERATE TO INTENSE CONVECTION LAY OVER REST BAY OF BENGAL REST ANDAMAN SEA.

**PROBABILITY OF CYCLOGENESIS (FORMATION OF DEPRESSION) DURING NEXT 120 HRS :**

| 24 HOURS | 24-48 HOURS | 48-72 HOURS | 72-96 HOURS | 96-120 HOURS |
|----------|-------------|-------------|-------------|--------------|
| NIL      | NIL         | NIL         | NIL         | NIL          |

**ARABIAN SEA:**

BROKEN LOW AND MEDIUM CLOUDS WITH EMBEDDED INTENSE TO VERY INTENSE CIRCULAR CONVECTION CLOUDS MASS LAY OVER EASTCENTRAL ARABIAN SEA OFF NORTH KONKAN COAST & NEIGHBOURHOOD ( MINIMUM CTT MINUS 93 DEG C ). SCATTERED LOW AND MEDIUM CLOUDS WITH EMBEDDED INTENSE TO VERY INTENSE CONVECTION OVER REST EASTCENTRAL ARABIAN SEA AND MODERATE TO INTENSE CONVECTION LAY OVER REST ARABIAN SEA.

**PROBABILITY OF CYCLOGENESIS (FORMATION OF DEPRESSION) DURING NEXT 120 HRS :**

| 24 HOURS | 24-48 HOURS | 48-72 HOURS | 72-96 HOURS | 96-120 HOURS |
|----------|-------------|-------------|-------------|--------------|
| NIL      | NIL         | NIL         | NIL         | NIL          |

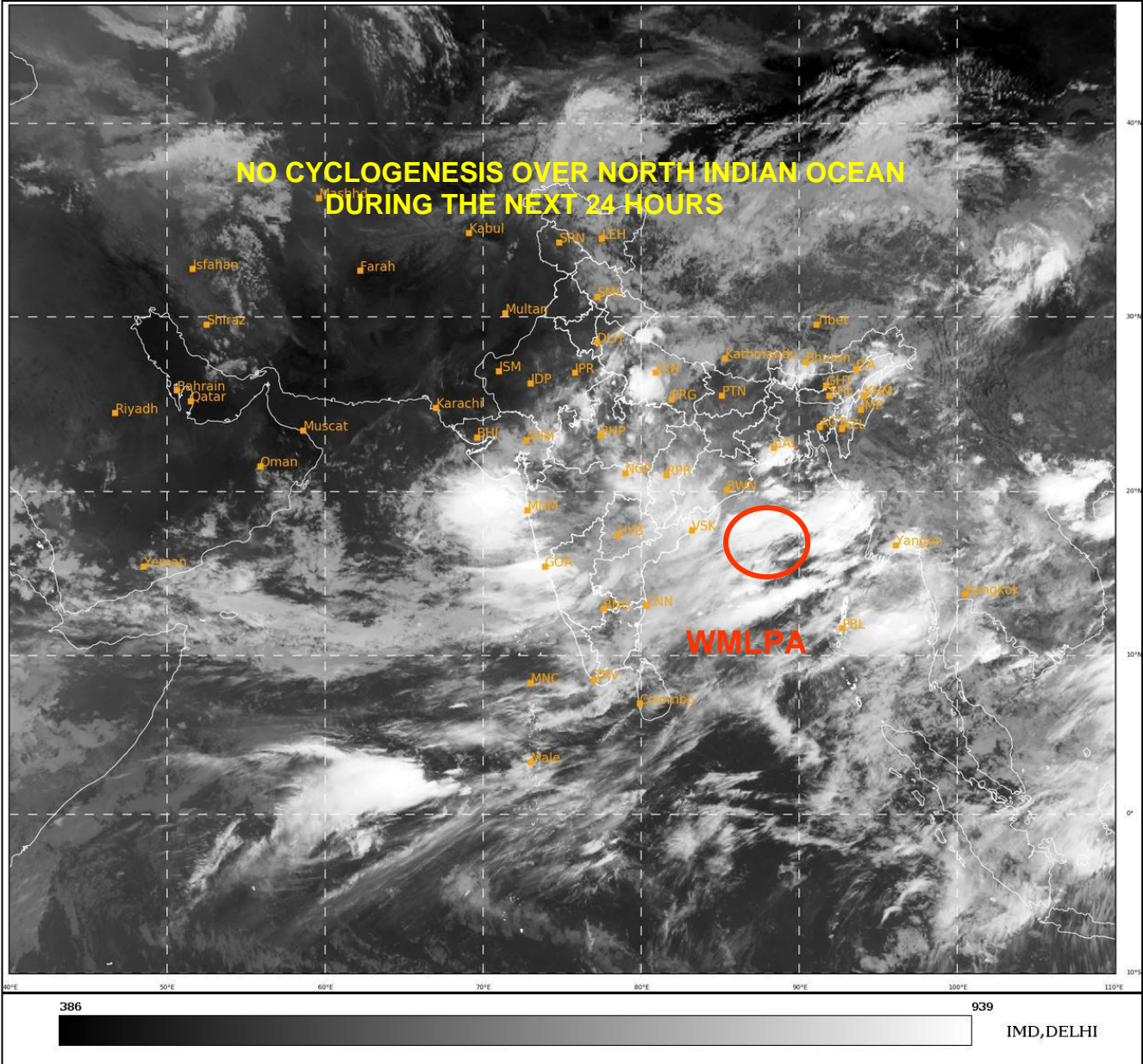
**REMARKS: NIL**

---

**PROBABILITY OF CYCLOGENESIS (FORMATION OF DEPRESSION)**  
NIL: 0%, LOW: 1-25%, FAIR: 26-50%, MODERATE: 51-75% AND HIGH: 76-100%

SAT : INSAT-3D IMG  
IMG\_TIR1 10.8 um  
LIC Mercator

05-08-2020/(0300 to 0326) GMT  
05-08-2020/(0830 to 0856) IST



**WMLPA: WELL MARK LOW PRESSURE AREA**

**PROBABILITY OF CYCLOGENESIS (FORMATION OF DEPRESSION)**  
**NIL: 0%, LOW: 1-25%, FAIR: 26-50%, MODERATE: 51-75% AND HIGH: 76-100%**