



**REGIONAL SPECIALISED METEOROLOGICAL CENTRE -TROPICAL CYCLONES, NEW DELHI
TROPICAL WEATHER OUTLOOK**

DEMS-RSMC TROPICAL CYCLONES NEW DELHI DATED 26.05.2026

TROPICAL WEATHER OUTLOOK FOR THE NORTH INDIAN OCEAN (THE BAY OF BENGAL AND THE ARABIAN SEA) VALID FOR THE NEXT 168 HOURS ISSUED AT 0600 UTC OF 26.05.2026 BASED ON 0300 UTC OF 26.05.2026.

BAY OF BENGAL:

An upper air cyclonic circulation formed over the Westcentral Bay of Bengal & neighborhood between 3.1 & 7.6 km above mean sea level at 0300 UTC of today, the 26th May 2026.

Scattered to broken low and medium clouds with embedded intense to very intense convection lay over eastcentral & southeast Bay of Bengal, Andaman Sea, Gulf of Martaban, and Tenasserim coast. Scattered low and medium clouds with embedded moderate to intense convection lay over westcentral & southwest Bay of Bengal and isolated weak to moderate convection lay over north Bay of Bengal.

***PROBABILITY OF CYCLOGENESIS (FORMATION OF DEPRESSION) DURING NEXT 168 HRS)**

24 HOURS	24-48 HOURS	48-72 HOURS	72-96 HOURS	96-120 HOURS	120-144 HOURS	144-168 HOURS
NIL	NIL	NIL	NIL	NIL	NIL	NIL

***NOTE: EVERY 24HR FORECAST IS VALID UPTO 0300 UTC (0830 IST) OF NEXT DAY**

ARABIAN SEA:

An upper air cyclonic circulation formed over the Southeast Arabian Sea & neighborhood between 3.1 & 7.6 km above mean sea level at 0300 UTC of today, the 26th May 2026.

Scattered to broken low and medium clouds with embedded moderate to intense convection lay over central & south Arabian Sea, Lakshadweep Islands area, Maldives area and Comorin area.

***PROBABILITY OF CYCLOGENESIS (FORMATION OF DEPRESSION) DURING NEXT 168 HRS:**

24 HOURS	24-48 HOURS	48-72 HOURS	72-96 HOURS	96-120 HOURS	120-144 HOURS	144-168 HOURS
NIL	NIL	NIL	NIL	NIL	NIL	NIL

***NOTE: EVERY 24HR FORECAST IS VALID UPTO 0300 UTC (0830 IST) OF NEXT DAY**

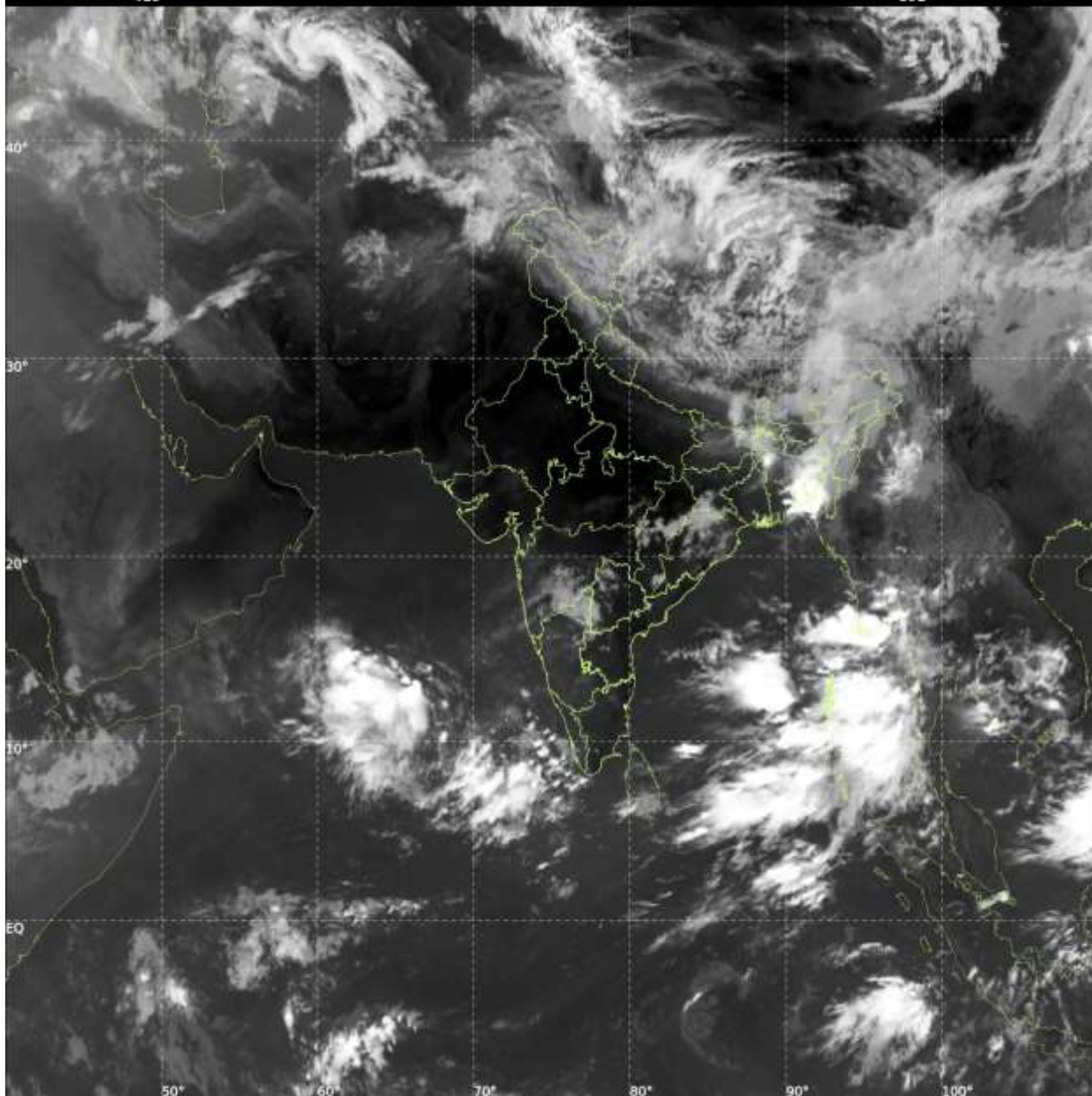
REMARKS: NIL



INSAT-3DS IMG, Thermal Infrared1 Count @ 10.83 μm
GMT:26-05-2026/(0300-0327) IST:26-05-2026/(0830-0857)
LIC MERCATOR (LINEAR STRETCH: 1%)

419

892



Cloud distribution: (a) Isolated: <25%, Scattered:25-50%, Broken: 51-75%, Solid:>75%, Convection Intensity: (a) Weak: Cloud Top Temperature(CTT)>-25°C, (b) Moderate: CTT:-25°Cto-40°C, (c) Intense: CTT: -41°Cto -70°C and (d) Very Intense::Less than -70°C Probability of cyclogenesis (formation of depression) :NIL:0%, LOW:1-33%, MODERATE:34-66% and HIGH:67-100%

This is a guidance Bulletin for WMO/ESCAP Panel Member countries. Visit respective National websites for Country specific Bulletins.