



REGIONAL SPECIALISED METEOROLOGICAL CENTRE-TROPICAL CYCLONES, NEW DELHI
TROPICAL WEATHER OUTLOOK

DEMS-RSMC TROPICAL CYCLONES NEW DELHI DATED 08.08.2020

TROPICAL WEATHER OUTLOOK FOR NORTH INDIAN OCEAN (THE BAY OF BENGAL AND ARABIAN SEA) VALID FOR NEXT 120 HOURS ISSUED AT 0600 UTC OF 08.08.2020 BASED ON 0300 UTC OF 08.08.2020.

BAY OF BENGAL:

A FRESH LOW PRESSURE AREA IS LIKELY TO DEVELOP OVER NORTH & ADJOINING WESTCENTRAL BAY OF BENGAL AROUND 9TH AUGUST, 2020.

SCATTERED LOW AND MEDIUM CLOUDS WITH EMBEDDED INTENSE TO VERY INTENSE CONVECTION LAY OVER CENTRAL PART OF BAY OF BENGAL AND ADJOINING NORTHWEST & SOUTHCENTRAL BAY OF BENGAL. SCATTERED LOW AND MEDIUM CLOUDS WITH EMBEDDED MODERATE TO INTENSE CONVECTION LAY OVER ANDAMAN SEA

PROBABILITY OF CYCLOGENESIS (FORMATION OF DEPRESSION) DURING NEXT 120 HRS :

24 HOURS	24-48 HOURS	48-72 HOURS	72-96 HOURS	96-120 HOURS
NIL	NIL	NIL	NIL	NIL

ARABIAN SEA:

THE WELL MARKED LOW PRESSURE AREA OVER CENTRAL PARTS OF NORTH ARABIAN SEA ADJOINING SOUTH PAKISTAN NOW LIES OVER NORTHWEST & ADJOINING NORTHEAST ARABIAN SEA & NEIGHBOURHOOD. THE ASSOCIATED CYCLONIC CIRCULATION EXTENDS UPTO 5.8 KM ABOVE MEAN SEA LEVEL. IT IS LIKELY TO MOVE WESTWARDS.

SCATTERED TO BROKEN LOW AND MEDIUM CLOUDS WITH EMBEDDED INTENSE TO VERY INTENSE CONVECTION LAY OVER NORTHWEST & SOUTHEAST ARABIAN SEA. SCATTERED LOW AND MEDIUM CLOUDS WITH EMBEDDED ISOLATED MODERATE TO INTENSE CONVECTION LAY OVER WESTCENTRAL ARABIAN SEA.

PROBABILITY OF CYCLOGENESIS (FORMATION OF DEPRESSION) DURING NEXT 120 HRS :

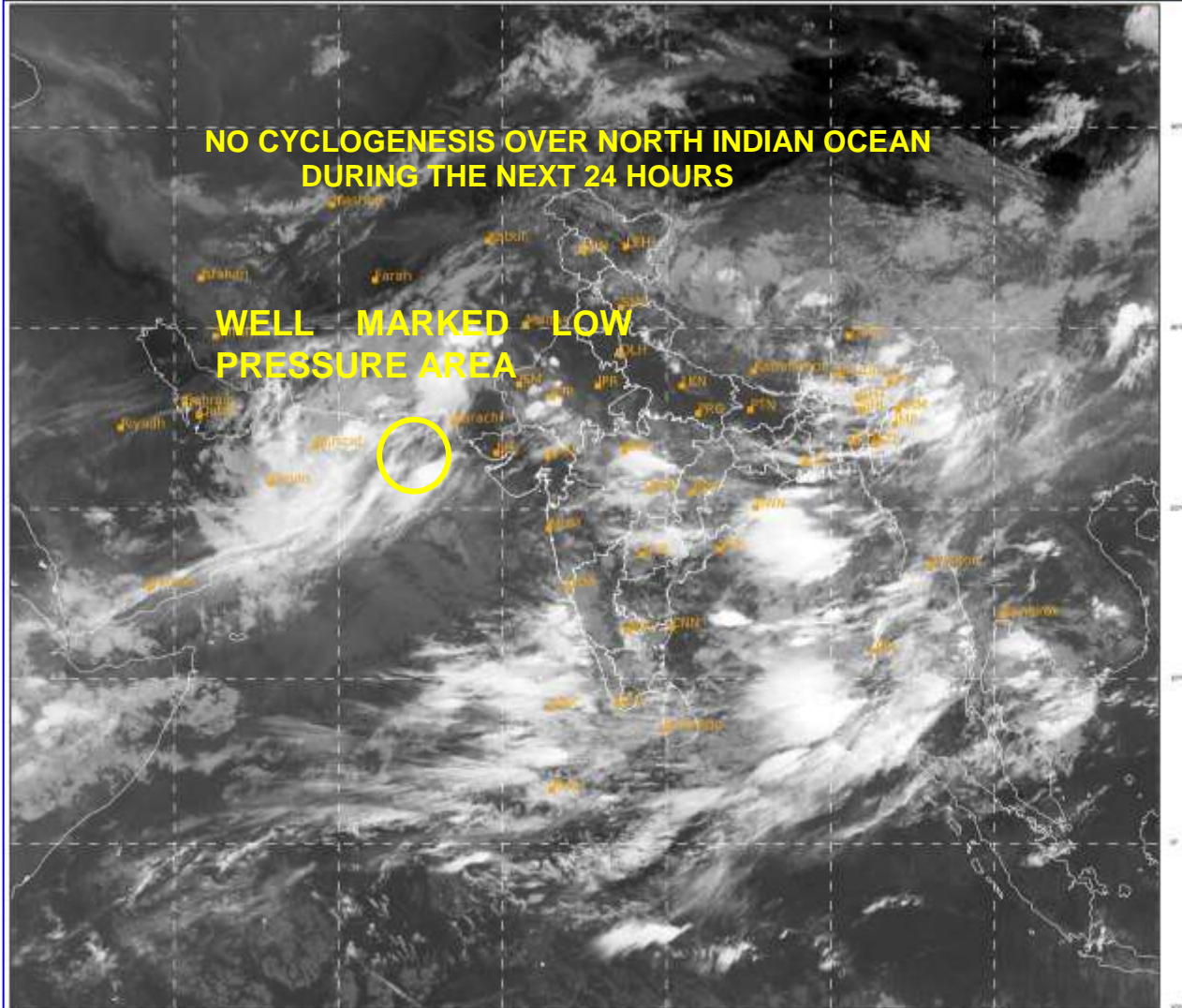
24 HOURS	24-48 HOURS	48-72 HOURS	72-96 HOURS	96-120 HOURS
NIL	NIL	NIL	NIL	NIL

REMARKS: NIL

PROBABILITY OF CYCLOGENESIS (FORMATION OF DEPRESSION)
NIL: 0%, LOW: 1-25%, FAIR: 26-50%, MODERATE: 51-75% AND HIGH: 76-100%

SAT : INSAT-3D IMG
IMG_TIR1 10.8 um
LIC Mercator

08-08-2020/(0300 to 0327) GMT
08-08-2020/(0830 to 0857) IST



375

932

IMD, DELHI

PROBABILITY OF CYCLOGENESIS (FORMATION OF DEPRESSION)
NIL: 0%, LOW: 1-25%, FAIR: 26-50%, MODERATE: 51-75% AND HIGH: 76-100%