



**REGIONAL SPECIALISED METEOROLOGICAL CENTRE -TROPICAL CYCLONES, NEW
DELHI TROPICAL WEATHER OUTLOOK**

DEMS-RSMC TROPICAL CYCLONES NEW DELHI DATED 06.12.2025

**TROPICAL WEATHER OUTLOOK FOR THE NORTH INDIAN OCEAN (THE BAY OF BENGAL
AND THE ARABIAN SEA) VALID FOR THE NEXT 168 HOURS ISSUED AT 0600 UTC OF
06.12.2025 BASED ON 0300 UTC OF 06.12.2025.**

BAY OF BENGAL:

Scattered low and medium clouds with embedded moderate to intense convection lay over southwest Bay of Bengal and Andaman Sea.

***PROBABILITY OF CYCLOGENESIS (FORMATION OF DEPRESSION) DURING NEXT 168 HRS)**

24 HOURS	24-48 HOURS	48-72 HOURS	72-96 HOURS	96-120 HOURS	120-144 HOURS	144-168 HOURS
NIL	NIL	NIL	NIL	NIL	NIL	NIL

***NOTE: EVERY 24HR FORECAST IS VALID UPTO 0300 UTC (0830 IST) OF NEXT DAY**

ARABIAN SEA:

An upper air cyclonic circulation lay over south Kerala coast & neighbourhood at 0.9 km above mean sea level at 0000 UTC of today, the 06th December 2025 and it persisted over the same region at 0300 UTC of today, the 06th December 2025.

Scattered low and medium clouds with embedded intense to very intense convection lay over southeast Arabian Sea and moderate to intense convection lay over west and northeast Arabian Sea.

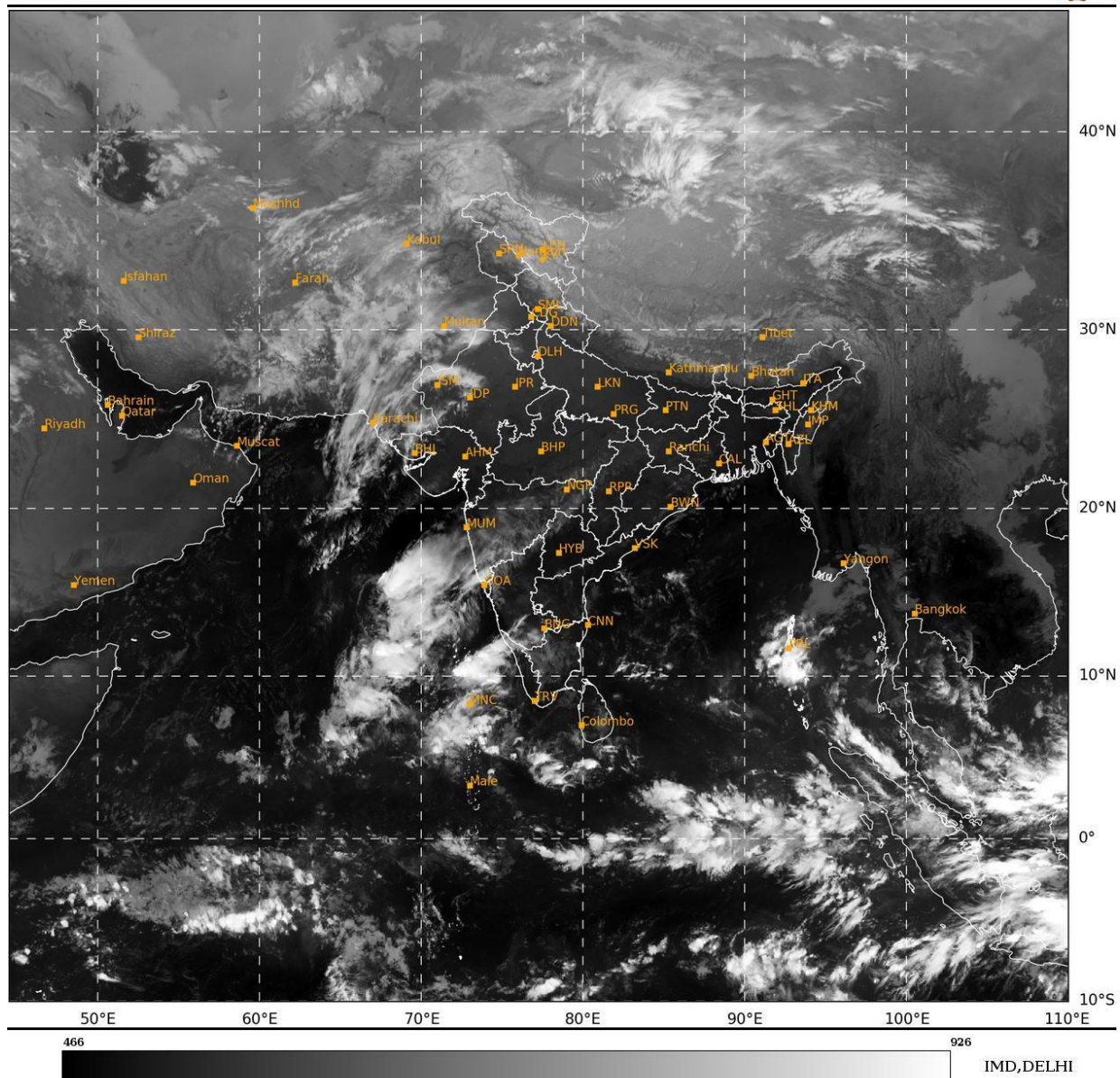
***PROBABILITY OF CYCLOGENESIS (FORMATION OF DEPRESSION) DURING NEXT 168 HRS:**

24 HOURS	24-48 HOURS	48-72 HOURS	72-96 HOURS	96-120 HOURS	120-144 HOURS	144-168 HOURS
NIL	NIL	NIL	NIL	NIL	NIL	NIL

***NOTE: EVERY 24HR FORECAST IS VALID UPTO 0300 UTC (0830 IST) OF NEXT DAY**

REMARKS: Nil

06-12-2025/(0315 to 0342) GMT
06-12-2025/(0845 to 0912) IST



Cloud distribution: (a) Isolated: <25%, Scattered:25-50%, Broken: 51-75%, Solid:>75%, Convection Intensity: (a) Weak: Cloud Top Temperature(CTT)>25°C, (b) Moderate: CTT:-25°Cto-40°C, (c) Intense: CTT: -41°Cto -70°C and (d) Very Intense:<Less than -70°C Probability of cyclogenesis (formation of depression) :NIL:0%, LOW:1-33%, MODERATE:34-66% and HIGH:67-100%
This is a guidance Bulletin for WMO/ESCAP Panel Member countries. Visit respective National websites for Country specific Bulletins.