



**REGIONAL SPECIALISED METEOROLOGICAL CENTRE-TROPICAL CYCLONES, NEW DELHI  
TROPICAL WEATHER OUTLOOK**

---

**DEMS-RSMC TROPICAL CYCLONES NEW DELHI DATED 12.09.2020**

**TROPICAL WEATHER OUTLOOK FOR NORTH INDIAN OCEAN (THE BAY OF BENGAL AND ARABIAN SEA) VALID FOR NEXT 120 HOURS ISSUED AT 0600 UTC OF 12.09.2020 BASED ON 0300 UTC OF 12.09.2020.**

**BAY OF BENGAL:**

A LOW PRESSURE AREA IS LIKELY TO FORM OVER WESTCENTRAL BAY OF BENGAL OFF ANDHRA PRADESH COAST BY 13<sup>TH</sup> SEPTEMBER, 2020.

SCATTERED LOW AND MEDIUM CLOUDS WITH EMBEDDED INTENSE TO VERY INTENSE CONVECTION LAY OVER SOUTH AND ADJOINING WESTCENTRAL BAY OF BENGAL AND ANDAMAN SEA.

**PROBABILITY OF CYCLOGENESIS DURING NEXT 120 HRS:**

24 HOURS	24-48 HOURS	48-72 HOURS	72-96 HOURS	96-120 HOURS
NIL	NIL	NIL	NIL	NIL

**ARABIAN SEA:**

SCATTERED LOW AND MEDIUM CLOUDS WITH EMBEDDED INTENSE TO VERY INTENSE CONVECTION LAY OVER EASTCENTRAL ADJOINING NORTHEAST ARABIAN SEA AND MODERATE TO INTENSE CONVECTION LAY OVER SOUTHEAST ARABIAN SEA AND COMORIN REGION.

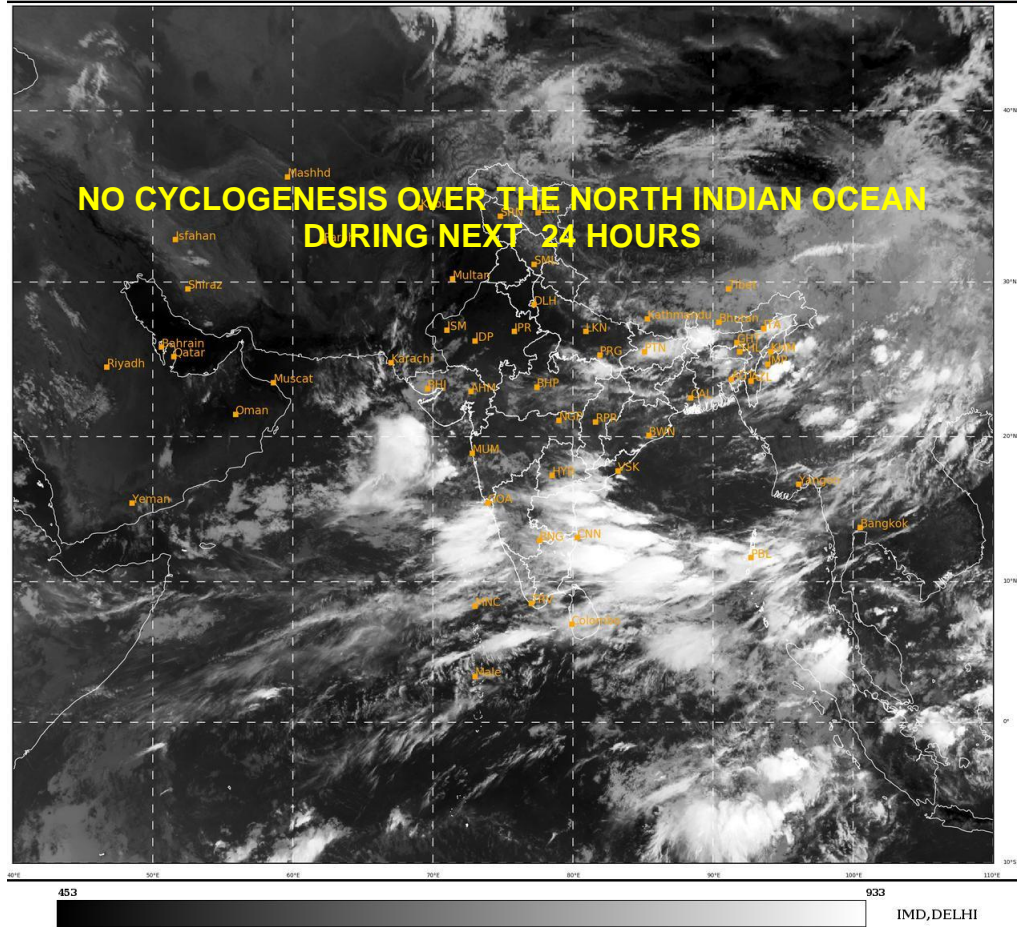
**PROBABILITY OF CYCLOGENESIS DURING NEXT 120 HRS:**

24 HOURS	24-48 HOURS	48-72 HOURS	72-96 HOURS	96-120 HOURS
NIL	NIL	NIL	NIL	NIL

**REMARKS: NIL**

---

**PROBABILITY OF CYCLOGENESIS (FORMATION OF DEPRESSION)  
NIL: 0%, LOW: 1-25%, FAIR: 26-50%, MODERATE: 51-75% AND HIGH: 76-100%**



**PROBABILITY OF CYCLOGENESIS (FORMATION OF DEPRESSION)**  
**NIL: 0%, LOW: 1-25%, FAIR: 26-50%, MODERATE: 51-75% AND HIGH: 76-100%**