



**REGIONAL SPECIALISED METEOROLOGICAL CENTRE-TROPICAL CYCLONES, NEW DELHI
TROPICAL WEATHER OUTLOOK**

DEMS-RSMC TROPICAL CYCLONES NEW DELHI DATED 05.01.2021

TROPICAL WEATHER OUTLOOK FOR NORTH INDIAN OCEAN (THE BAY OF BENGAL AND ARABIAN SEA) VALID FOR NEXT 120 HOURS ISSUED AT 0600 UTC OF 05.01.2021 BASED ON 0300 UTC OF 05.01.2021.

BAY OF BENGAL:

SCATTERED LOW AND MEDIUM CLOUDS WITH EMBEDDED INTENSE TO VERY INTENSE CONVECTION LAY OVER SOUTH BAY OF BENGAL & SOUTH ANDAMAN SEA AND MODERATE TO INTENSE CONVECTION OVER WESTCENTRAL BAY OF BENGAL.

PROBABILITY OF CYCLOGENESIS DURING NEXT 120 HRS:

24 HOURS	24-48 HOURS	48-72 HOURS	72-96 HOURS	96-120 HOURS
NIL	NIL	NIL	NIL	NIL

ARABIAN SEA:

SCATTERED LOW AND MEDIUM CLOUDS WITH EMBEDDED INTENSE TO VERY INTENSE CONVECTION LAY OVER SOUTH ARABIAN SEA AND MODERATE TO INTENSE CONVECTION OVER EASTCENTRAL ARABIAN SEA & COMORIN.

PROBABILITY OF CYCLOGENESIS DURING NEXT 120 HRS :

24 HOURS	24-48 HOURS	48-72 HOURS	72-96 HOURS	96-120 HOURS
NIL	NIL	NIL	NIL	NIL

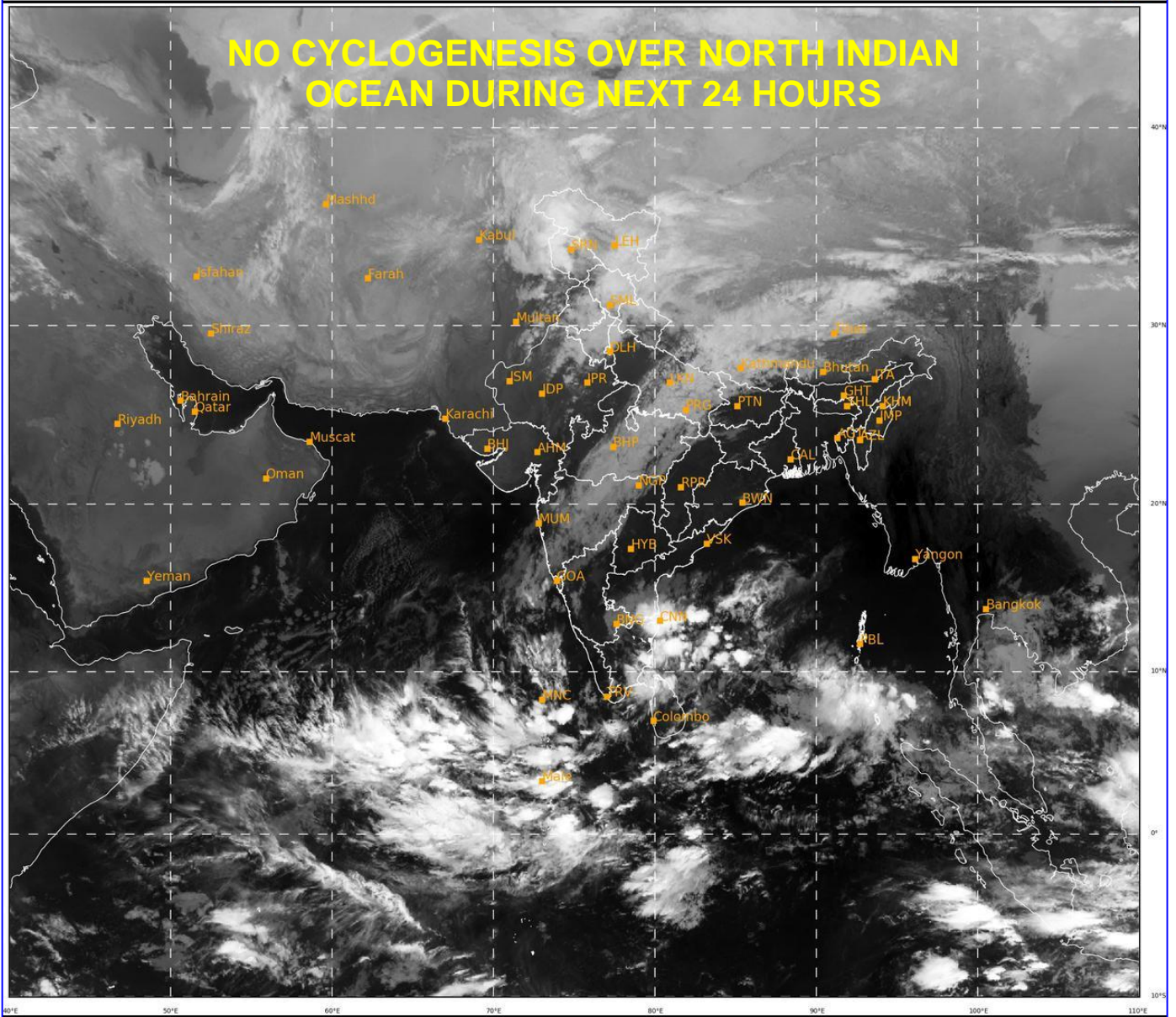
REMARKS: Nil

SAT : INSAT-3D IMG
IMG_TIR1 10.8 um
LIC Mercator

05-01-2021/(0300 to 0327) GMT
05-01-2021/(0830 to 0857) IST



NO CYCLOGENESIS OVER NORTH INDIAN OCEAN DURING NEXT 24 HOURS



498

936

IMD, DELHI

PROBABILITY OF CYCLOGENESIS (FORMATION OF DEPRESSION):NIL: 0%, LOW: 1-25%, FAIR: 26-50%, MODERATE: 51-75% AND HIGH: 76-100%

✚ This is a guidance Bulletin for the WMO/ESCAP Panel Member countries,. Please visit respective National websites for Country specific Bulletins