



REGIONAL SPECIALISED METEOROLOGICAL CENTRE-TROPICAL CYCLONES, NEW DELHI
TROPICAL CYCLONE ADVISORY BULLETIN NO. 28

FROM: RSMC –TROPICAL CYCLONES, NEW DELHI

TO: STORM WARNING CENTRE, NAYPYI TAW (MYANMAR)
STORM WARNING CENTRE, BANGKOK (THAILAND)
STORM WARNING CENTRE, COLOMBO (SRILANKA)
STORM WARNING CENTRE, DHAKA (BANGLADESH)
STORM WARNING CENTRE, KARACHI (PAKISTAN)
METEOROLOGICAL OFFICE, MALE (MALDIVES)
OMAN METEOROLOGICAL DEPARTMENT, MUSCAT (THROUGH RTH JEDDAH)
YEMEN METEOROLOGICAL SERVICES, REPUBLIC OF YEMEN (THROUGH RTH JEDDAH)
NATIONAL CENTRE FOR METEOROLOGY, UAE (THROUGH RTH JEDDAH)
PRESIDENCY OF METEOROLOGY AND ENVIRONMENT, SAUDI ARABIA (THROUGH RTH JEDDAH)
IRAN METEOROLOGICAL ORGANISATION, (THROUGH RTH JEDDAH)
QATAR METEOROLOGICAL DEPARTMENT (THROUGH RTH JEDDAH)

TROPICAL CYCLONE ADVISORY NO. 28 FOR NORTH INDIAN OCEAN (THE BAY OF BENGAL AND ARABIAN SEA) VALID FOR NEXT 120 HOURS ISSUED AT 0600 UTC OF 18.05.2021 BASED ON 0300 UTC OF 18.05.2021.

SUB: SEVERE CYCLONIC STORM “TAUKTAE” (PRONOUNCED AS TAU’TE) OVER SAURASHTRA

THE VERY SEVERE CYCLONIC STORM “TAUKTAE” (PRONOUNCED AS TAU’TE) OVER SAURASHTRA MOVED NORTH-NORTHEAST WARDS WITH A SPEED OF ABOUT 10 KMPH DURING PAST 06 HOURS, WEAKENED INTO A SEVERE CYCLONIC STORM AND LAY CENTRED AT 0300 UTC OF 18TH MAY, 2021 OVER SAURASHTRA NEAR LATITUDE 21.6°N AND LONGITUDE 71.3°E, ABOUT 10 KM EAST OF AMRELI AND 210 KM SOUTHWEST OF AHMEDABAD(42647). IT IS VERY LIKELY TO MOVE NORTH-NORTHEASTWARDS AND WEAKEN GRADUALLY INTO A CYCLONIC STORM DURING NEXT 03 HOURS AND INTO A DERESSION BY TODAY EVENING.THE REMNANT OF THE SYSTEM IS VERY LIKELY TO MOVE NORTHEASTWARDS ACROSS RAJASTHAN TO WEST UTTAR PRADESH DURING 19TH AND 20TH.

FORECAST TRACK AND INTENSITY ARE GIVEN IN THE FOLLOWING TABLE:

DATE/TIME(UTC)	POSITION (LAT. °N/ LONG. °E)	MAXIMUM SUSTAINED SURFACE WIND SPEED (KMPH)	CATEGORY OF CYCLONIC DISTURBANCE
18.05.21/0300	21.6/71.3	105-115 gusting to 125	Severe Cyclonic Storm
18.05.21/0600	22.2/71.5	80-90 gusting to 100	Cyclonic Storm
18.05.21/1200	23.0/71.8	55-65 gusting to 75	Deep Depression
18.05.21/1800	23.8/72.1	45-55 gusting to 65	Depression
19.05.21/0000	24.6/72.4	35-45 gusting to 55	Depression

REMARKS:

AS PER INSAT-3D SATELLITE IMAGERY BASED ON 0300 UTC OF TODAY THE 18th MAY 2021, THE ASSOCIATED VORTEX IS NOW SEEN OVER OVER (LAND) SOUTHWEST GUJARAT. ASSOCIATED BROKEN LOW AND MEDIUM CLOUDS WITH EMBEDDED INTENSE TO VERY INTENSE CONVECTION LAY OVER SOUTH RAJASTHAN, GULF OF KUTCH, GULF OF CAMBAY, NORTH KONKAN, MADHYA MAHARASHTRA AND ADJOINING SOUTHWEST

PROBABILITY OF CYCLOGENESIS (FORMATION OF DEPRESSION)

NIL: 0%, LOW: 1-25%, FAIR: 26-50%, MODERATE: 51-75% AND HIGH: 76-100%

MADHYA PRADESH AND ALSO OVER NORTHEAST ARABIAN SEA BETWEEN LATITUDE 18.0°N & 22.5°N AND EAST OF LONG 69.0E AND ALSO OVER GULF OF CAMBAY, GUJARAT, KONKAN GOA AND NORTH MADHYA MAHARASHTRA. MINIMUM CLOUD TOP TEMPERATURE IS -93°C.

THE ASSOCIATED MAXIMUM SUSTAINED WIND SPEED IS 55 KNOTS GUSTING TO 65 KNOTS. THE ESTIMATED CENTRAL PRESSURE IS 984HPA. SEA CONDITION IS ROUGH TO VERY ROUGH.

THE LOW LEVEL CYCLONIC VORTICITY HAS REDUCED AND IS ABOUT 200-250 X10⁻⁶ S⁻¹ AROUND SYSTEM CENTRE. LOW LEVEL CONVERGENCE HAS REDUCED AND IS ABOUT (30 X10⁻⁵ S⁻¹) TO THE SOUTH OF SYSTEM CENTRE. POSITIVE UPPER LEVEL DIVERGENCE IS (40 X 10⁻⁵ S⁻¹) AND LIES TO THE SOUTH OF THE SYSTEM CENTRE.. UPPER TROPOSPHERIC RIDGE RUNS ALONG 23.5°N AND LIES TO THE EAST OF THE SYSTEM CENTRE.

TROPICAL WEATHER OUTLOOK FOR NORTH INDIAN OCEAN (THE BAY OF BENGAL AND ARABIAN SEA) VALID FOR NEXT 120 HOURS ISSUED AT 0600 UTC OF 18.05.2021 BASED ON 0300 UTC OF 18.05.2021.

BAY OF BENGAL:

SCATTERED TO BROKEN LOW AND MEDIUM CLOUDS WITH EMBEDDED INTENSE TO VERY INTENSE CONVECTION LAY OVER SOUTH BAY OF BENGAL (BOB) AND MODERATE TO INTENSE CONVECTION LAY OVER ANDAMAN SEA.

A LOW PRESSURE AREA IS LIKELY TO FORM OVER EASTCENTRAL BOB AROUND 23RD MAY, 2021.

PROBABILITY OF CYCLOGENESIS (FORMATION OF DEPRESSION) DURING NEXT 120 HRS:

24 HOURS	24-48 HOURS	48-72 HOURS	72-96 HOURS	96-120 HOURS
NIL	NIL	NIL	NIL	NIL

ARABIAN SEA:

SCATTERED TO BROKEN LOW AND MEDIUM CLOUDS WITH EMBEDDED INTENSE TO VERY INTENSE CONVECTION LAY OVER EASTCENTRAL AND ADJOINING NORTHEAST ARABIAN SEA BETWEEN LATITUDE 18.0°N & 22.5°N AND EAST OF LONG 69.0E. SCATTERED LOW AND MEDIUM CLOUDS WITH EMBEDDED MODERATE TO INTENSE CONVECTION LAY OVER REST EASTCENTRAL ARABIAN SEA AND SOUTHEAST ARABIAN SEA.

PROBABILITY OF CYCLOGENESIS (FORMATION OF DEPRESSION) DURING NEXT 120 HRS:

24 HOURS	24-48 HOURS	48-72 HOURS	72-96 HOURS	96-120 HOURS
NIL	NIL	NIL	NIL	NIL

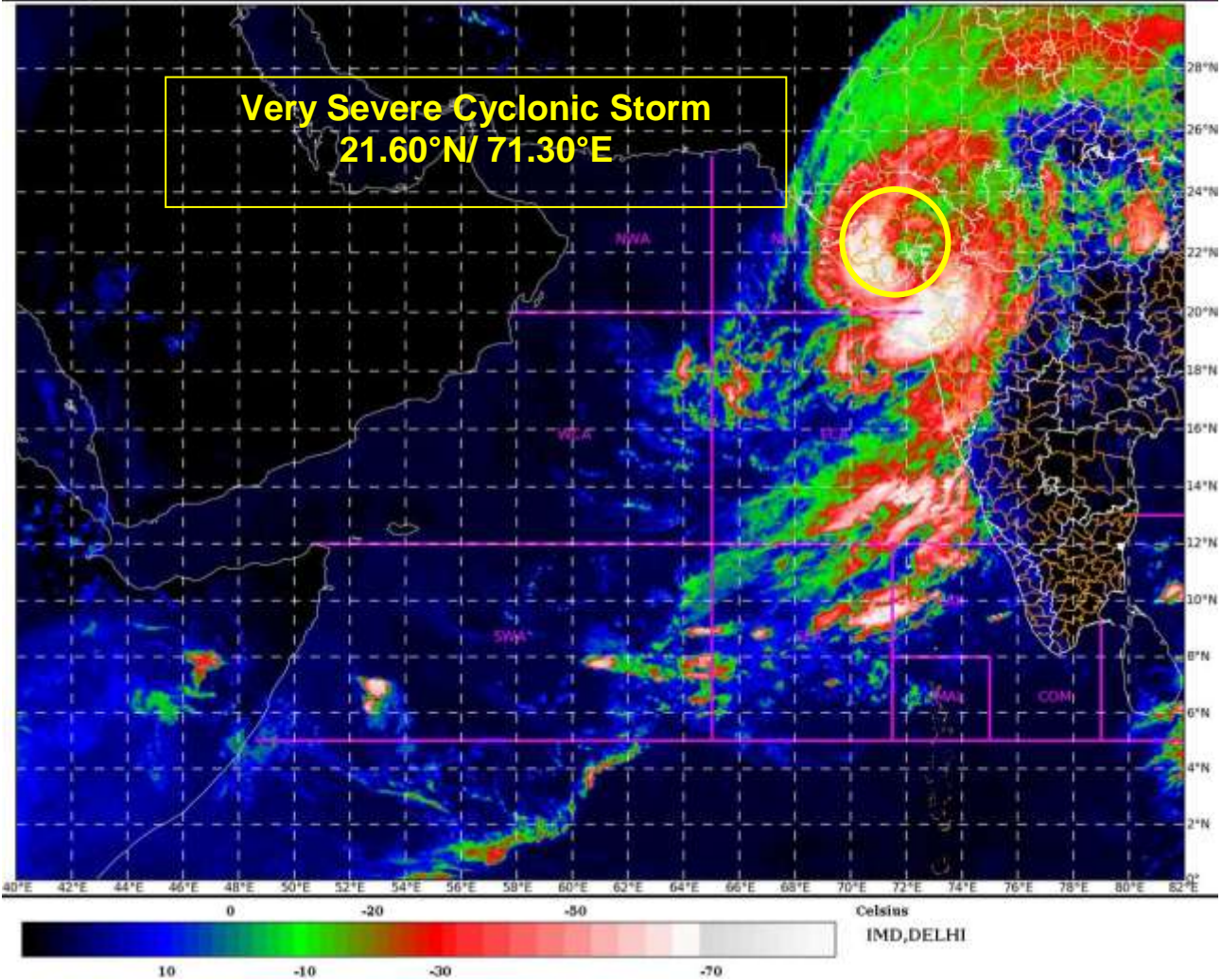
(SUNITHA DEVI)
SCIENTIST-F
RSMC, NEW DELHI

PROBABILITY OF CYCLOGENESIS (FORMATION OF DEPRESSION)

NIL: 0%, LOW: 1-25%, FAIR: 26-50%, MODERATE: 51-75% AND HIGH: 76-100%

SAT : INSAT-3D IMG
IMG_TIRL_TEMP 10.8 um
ARABIAN SEA

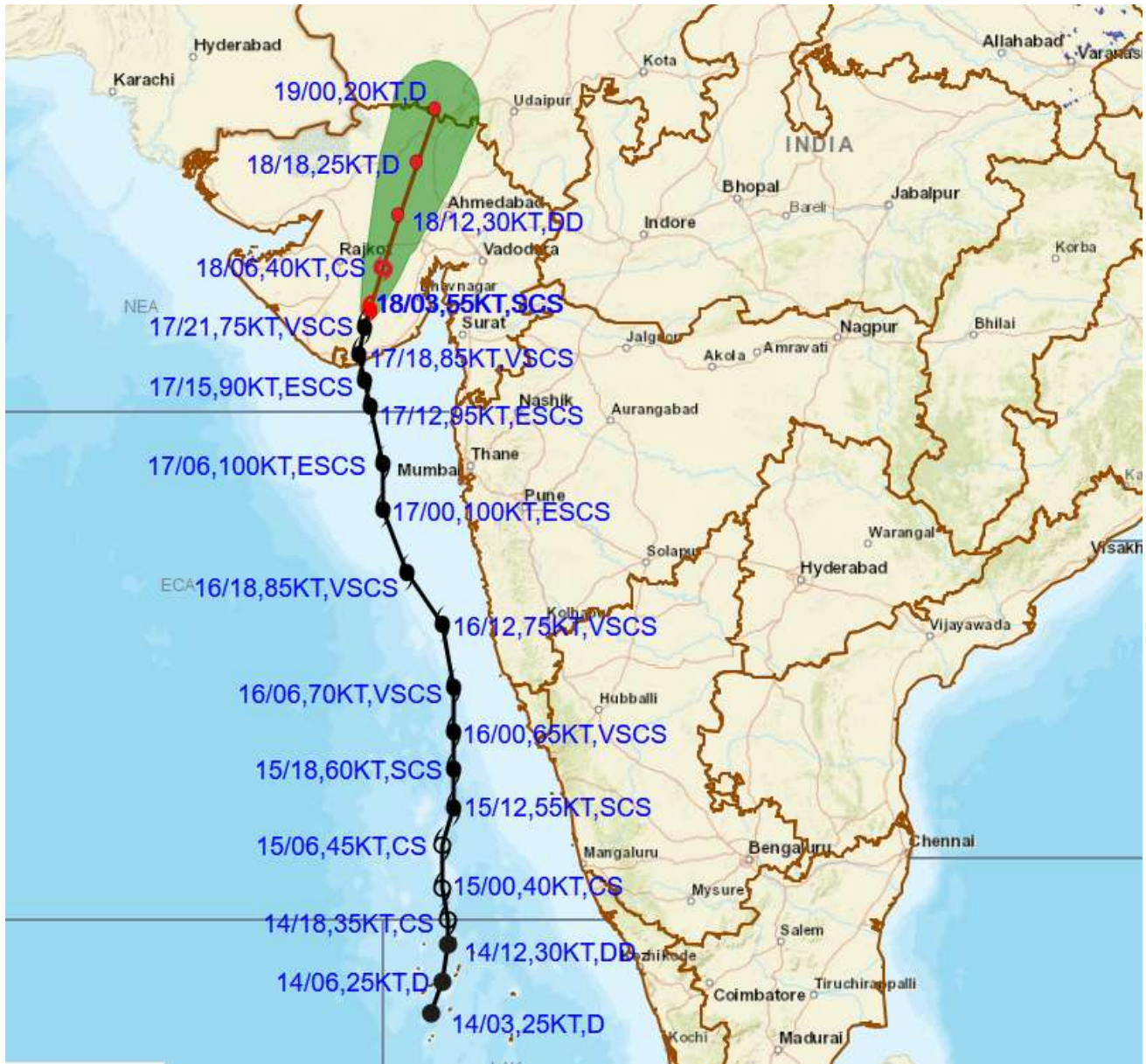
18-05-2021(0500 to 0527) GMT
18-05-2021(1030 to 1057) IST



PROBABILITY OF CYCLOGENESIS (FORMATION OF DEPRESSION)
NIL: 0%, LOW: 1-25%, FAIR: 26-50%, MODERATE: 51-75% AND HIGH: 76-100%



OBSERVED AND FORECAST TRACK ALONGWITH CONE OF UNCERTAINTY OF SEVERE CYCLONIC STORM "TAUKTAE" OVER SAURASHTRA BASED ON 0300 UTC OF 18TH MAY, 2021



DATE/TIME IN UTC

IST=UTC + 0530

L: LOW PRESSURE AREA

WML: WELL MARKED LOW PRESSURE AREA

D: DEPRESSION (17-27 KT)

DD: DEEP DEPRESSION (28-33 KT)

CS: CYCLONIC STORM (34-47 KT)

SCS: SEVERE CYCLONIC STORM (48-63KT)

VSCS: VERY SEVERE CYCLONIC STORM (64-89 KT)

ESCS: EXTREMELY SEVERE CYCLONIC STORM (90-119 KT)

SuCS: SUPER CYCLONIC STORM (\geq 120 KT)

● LESS THAN 34 KT

⊙ 34-47 KT

⊙ \geq 48 KT

— OBSERVED TRACK

— FORECAST TRACK

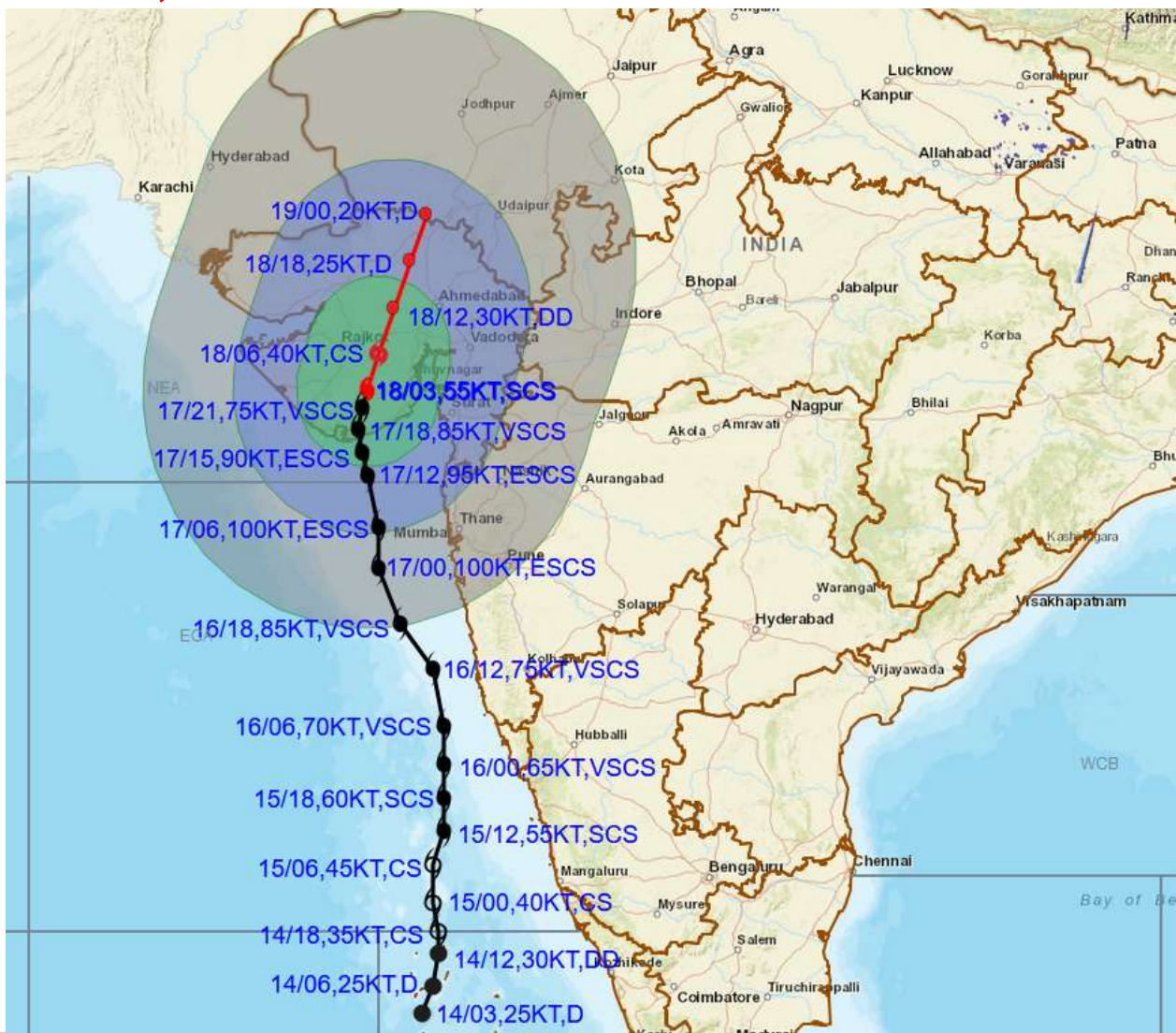
▲ CONE OF UNCERTAINTY

PROBABILITY OF CYCLOGENESIS (FORMATION OF DEPRESSION)

NIL: 0%, LOW: 1-25%, FAIR: 26-50%, MODERATE: 51-75% AND HIGH: 76-100%



OBSERVED AND FORECAST TRACK ALONGWITH QUADRANT WIND DISTRIBUTION OF SEVERE CYCLONIC STORM "TAUKTAE" OVER SAURASHTRA BASED ON 0300 UTC OF 18TH MAY, 2021



DATE/TIME IN UTC

IST=UTC + 0530

L: LOW PRESSURE AREA

WML: WELL MARKED LOW PRESSURE AREA

D: DEPRESSION (17-27 KT)

DD: DEEP DEPRESSION (28-33 KT)

CS: CYCLONIC STORM (34-47 KT)

SCS: SEVERE CYCLONIC STORM (48-63KT)

VSCS: VERY SEVERE CYCLONIC STORM (64-89 KT)

ESCS: EXTREMELY SEVERE CYCLONIC STORM (90-119 KT)

SuCS: SUPER CYCLONIC STORM (≥ 120 KT)

● LESS THAN 34 KT

○ 34-47 KT

● ≥ 48 KT

— OBSERVED TRACK

— FORECAST TRACK

● CONE OF UNCERTAINTY

AREA OF MAXIMUM SUSTAINED WIND SPEED:

■ 28-33 KT (52-61 KMPH)

■ 34-49 KT (62-91 KMPH)

■ 50-63 KT (92-117 KMPH)

■ ≥ 64 KT (≥118 KMPH)

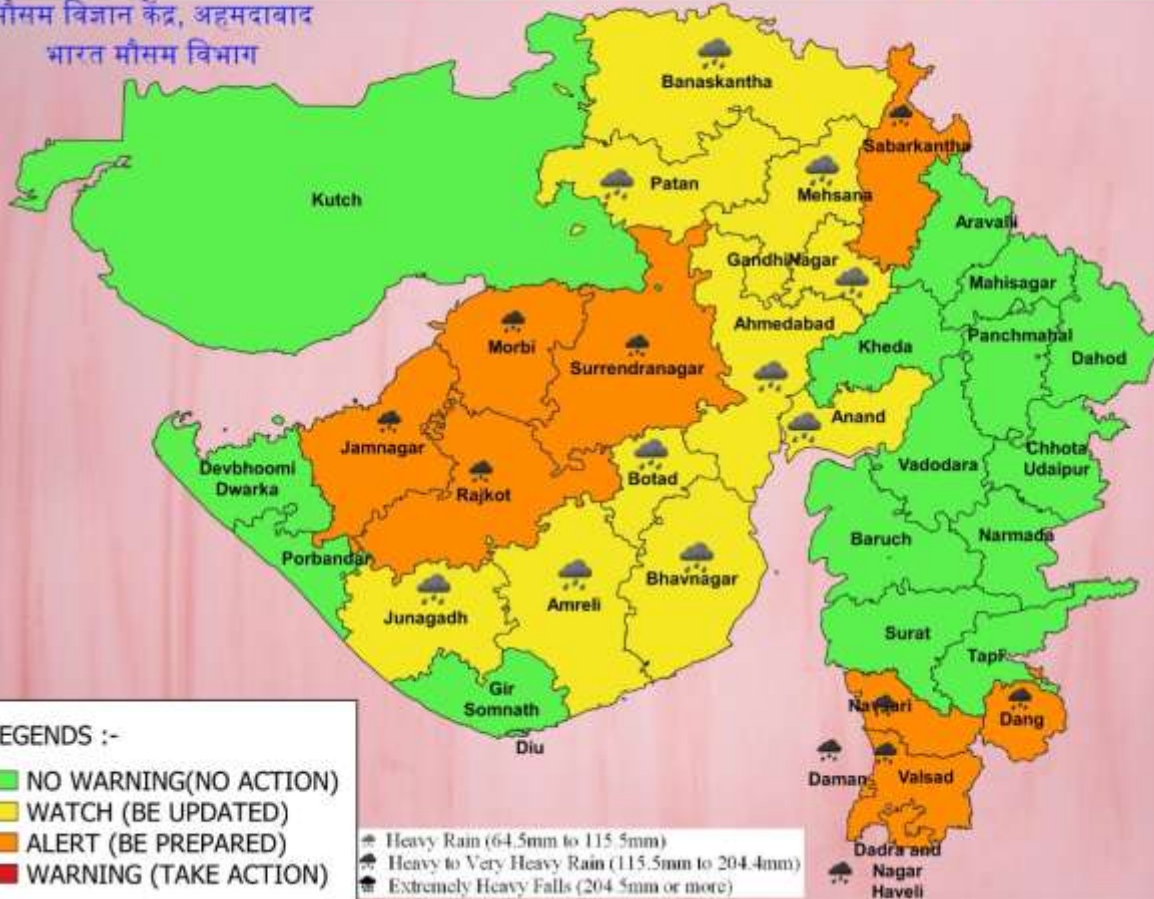
IMPACT OVER THE SEA

MSW (knot/kmph)	Impact	Action
28-33 (52-61)	Very rough seas	Total suspension of fishing operations
34-49 (62-91)	High to very high seas	Total suspension of fishing operations
50-63 (92-117)	Very high seas	Total suspension of fishing operations
≥ 64 (≥118)	Phenomenal	Total suspension of fishing operations

PROBABILITY OF CYCLOGENESIS (FORMATION OF DEPRESSION)

NIL: 0%, LOW: 1-25%, FAIR: 26-50%, MODERATE: 51-75% AND HIGH: 76-100%

मौसम विज्ञान केंद्र, अहमदाबाद
भारत मौसम विभाग



LEGENDS :-

- NO WARNING (NO ACTION)
- WATCH (BE UPDATED)
- ALERT (BE PREPARED)
- WARNING (TAKE ACTION)

- Heavy Rain (64.5mm to 115.5mm)
- Heavy to Very Heavy Rain (115.5mm to 204.4mm)
- Extremely Heavy Falls (204.5mm or more)

PROBABILITY OF CYCLOGENESIS (FORMATION OF DEPRESSION)

NIL: 0%, LOW: 1-25%, FAIR: 26-50%, MODERATE: 51-75% AND HIGH: 76-100%

WIND WARNING FOR GUJARAT STATE FOR NEXT 06 HOURS

Wind Warning for Gujarat State Dated 18-05-2021 Morning



PROBABILITY OF CYCLOGENESIS (FORMATION OF DEPRESSION)

NIL: 0%, LOW: 1-25%, FAIR: 26-50%, MODERATE: 51-75% AND HIGH: 76-100%