



**REGIONAL SPECIALISED METEOROLOGICAL CENTRE-TROPICAL CYCLONES, NEW DELHI
TROPICAL WEATHER OUTLOOK**

DEMS-RSMC TROPICAL CYCLONES NEW DELHI DATED 12.11.2021

TROPICAL WEATHER OUTLOOK FOR NORTH INDIAN OCEAN (THE BAY OF BENGAL AND ARABIAN SEA) VALID FOR NEXT 120 HOURS ISSUED AT 0600 UTC OF 12.11.2021 BASED ON 0300 UTC OF 12.11.2021.

BAY OF BENGAL:

- A. A CYCLONIC CIRCULATION LAY OVER GULF OF THAILAND AND NEIGHBOURHOOD AND EXTENDED UPTO 5.8 KM ABOVE MEAN SEA LEVEL TILTING SOUTHWESTWARDS WITH HEIGHT AT 0300 UTC OF TODAY, THE 12TH NOVEMBER, 2021. IT IS LIKELY TO EMERGE INTO ANDAMAN SEA AND UNDER IT'S INFLUENCE, A LOW PRESSURE AREA IS LIKELY TO FORM OVER SOUTH ANDAMAN SEA AND NEIGHBOURHOOD BY TOMORROW, THE 13TH NOVEMBER, 2021. IT IS LIKELY TO MOVE WEST-NORTHWESTWARDS AND CONCENTRATE INTO A DEPRESSION OVER EASTCENTRAL AND ADJOINING SOUTHEAST BAY OF BENGAL (BOB) ON 15TH NOVEMBER.
- B. THE WELL MARKED LOW PRESSURE AREA OVER NORTH TAMIL NADU AND NEIGHBOURHOOD WEAKENED INTO A LOW PRESSURE AREA (LPA) OVER NORTH INTERIOR TAMILNADU AND NEIGHBOURHOOD AT 0300 UTC OF TODAY, THE 12TH NOVEMBER, 2021.

AS PER INSAT 3D IMAGERY AT 0300UTC, SCATTERED TO BROKEN LOW & MEDIUM CLOUDS WITH EMBEDDED INTENSE TO VERY INTENSE CONVECTION LAY OVER WESTCENTRAL BOB, SOUTHEAST BOB AND ANDAMAN SEA AND MODERATE TO INTENSE CONVECTION LAY OVER SOUTHWEST & WESTCENTRAL BOB. SCATTERED TO BROKEN LOW & MEDIUM CLOUDS WITH EMBEDDED WEAK CONVECTION LAY OVER NORTH TAMILNADU AND NEIGHBOURHOOD IN ASSOCIATION WITH LPA OVER NORTH INTERIOR TAMILNADU AND NEIGHBOURHOOD

PROBABILITY OF CYCLOGENESIS (FORMATION OF DEPRESSION) DURING NEXT 120 HRS:

24 HOURS	24-48 HOURS	48-72 HOURS	72-96 HOURS	96-120 HOURS
NIL	NIL	NIL	MODERATE	HIGH

ARABIAN SEA:

THE LOW PRESSURE AREA OVER CENTRAL AND ADJOINING SOUTH ARABIAN SEA LAY OVER CENTRAL PARTS OF SOUTH ARABIAN SEA AT 0000 UTC OF TODAY, THE 12TH NOVEMBER. IT BECAME LESS MARKED AT 0300 UTC OF TODAY..

AT 0300 UTC, ASSOCIATED SCATTERED LOW & MEDIUM CLOUDS WITH EMBEDDED MODERATE TO INTENSE CONVECTION LAY OVER CENTRAL PARTS OF SOUTH ARABIAN SEA IN ASSOCIATION WITH LOW LEVEL CIRCULATION (LLC) OVER THE AREA. SCATTERED LOW & MEDIUM CLOUDS WITH EMBEDDED MODERATE TO INTENSE CONVECTION LAY OVER SOUTHEAST AND ADJOINING SOUTHWEST ARABIAN SEA.

PROBABILITY OF CYCLOGENESIS (FORMATION OF DEPRESSION) DURING NEXT 120 HRS:

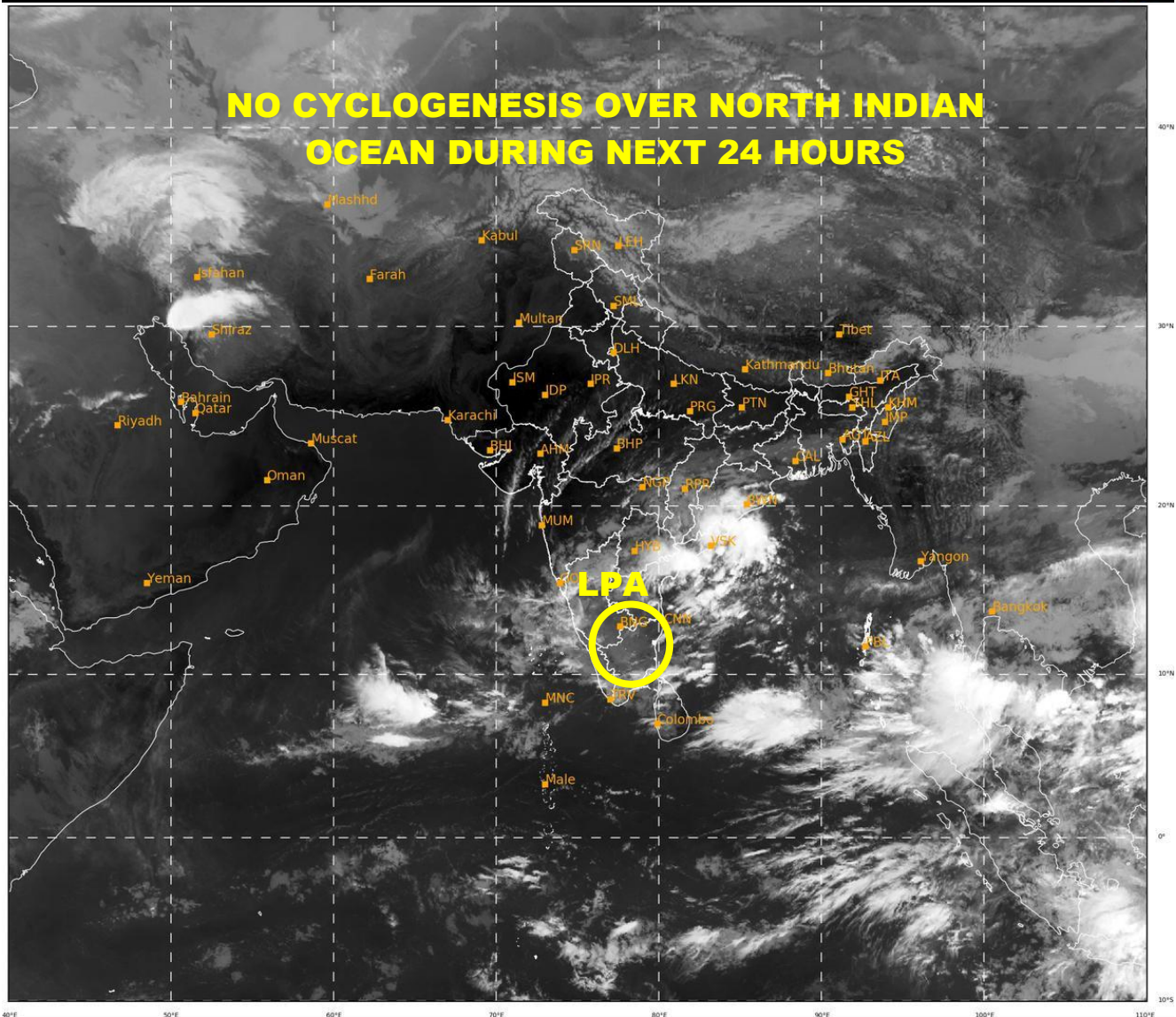
24 HOURS	24-48 HOURS	48-72 HOURS	72-96 HOURS	96-120 HOURS
NIL	NIL	NIL	NIL	NIL

REMARKS:

SEA SURFACE TEMPERATURE (SST) IS ABOUT 29-30°C OVER SOUTHEAST BOB AND ANDAMAN SEA. TROPICAL CYCLONE HEAT POTENTIAL (TCHP) IS ABOUT 100-120 KJ/CM² OVER PARTS OF EASTERN EQUATORIAL INDIAN OCEAN AND ADJOINING SOUTHEAST BOB & SOUTH ANDAMAN SEA. MADDEN JULIAN OSCILLATION INDEX IS IN PHASE 4 WITH AMPLITUDE CLOSE TO 1. IT WILL CONTINUE IN SAME PHASE WITH GRADUALLY DECREASING AMPLITUDE. POSITIVE LOW LEVEL VORTICITY IS ABOUT (60-80 X10⁻⁶ S-1) OVER GULF OF THAILAND WITH VERTICAL EXTENSION UPTO 500 HPA LEVEL. POSITIVE LOW LEVEL CONVERGENCE IS AROUND 05-10 X10⁻⁵ S-1 OVER SOUTH ANDAMAN SEA WITH HIGHER VALUE OVER GULF OF THAILAND ABOUT 20 X10⁻⁵ S-1. THE POSITIVE UPPER LEVEL DIVERGENCE IS AROUND 40 X10⁻⁵ S-1 OVER GULF OF THAILAND. WIND SHEAR IS LOW(05-15 KT) OVER GULF OF THAILAND AND CENTRAL BOB. THUS, MJO PHASE, SEA AND ENVIRONMENTAL CONDITIONS ARE FAVOURABLE FOR CYCLOGENESIS OVER THE BOB DURING FORECAST PERIOD.

MOST OF THE MODELS ARE INDICATING FORMATION OF LOW PRESSURE AREA OVER ANDAMAN SEA AROUND 13TH NOVEMBER, WEST-NORTHWESTWARDS MOVEMENT AND FORMATION OF DEPRESSION OVER EASTCENTRAL AND ADJOINING SOUTHEAST BAY OF BENGAL (BOB) AROUND 15TH NOVEMBER. SOME MODELS ARE ALSO INDICATING INTENSIFICATION OF THIS SYSTEM INTO A CYCLONIC STORM.

IN VIEW OF ALL THE ABOVE, A LOW PRESSURE AREA IS LIKELY TO FORM OVER SOUTH ANDAMAN SEA AND NEIGHBOURHOOD BY TOMORROW, THE 13TH NOVEMBER, 2021. IT IS LIKELY TO MOVE WEST-NORTHWESTWARDS AND CONCENTRATE INTO A DEPRESSION OVER EASTCENTRAL AND ADJOINING SOUTHEAST BAY OF BENGAL (BOB) ON 15TH NOVEMBER..



461

939

IMD, DELHI

LPA: LOW PRESSURE AREA