



REGIONAL SPECIALISED METEOROLOGICAL CENTRE-TROPICAL CYCLONES, NEW DELHI
TROPICAL CYCLONE ADVISORY BULLETIN NO. 21

FROM: RSMC –TROPICAL CYCLONES, NEW DELHI

TO: STORM WARNING CENTRE, NAYPYI TAW (MYANMAR)
STORM WARNING CENTRE, BANGKOK (THAILAND)
STORM WARNING CENTRE, COLOMBO (SRILANKA)
STORM WARNING CENTRE, DHAKA (BANGLADESH)
STORM WARNING CENTRE, KARACHI (PAKISTAN)
METEOROLOGICAL OFFICE, MALE (MALDIVES)
OMAN METEOROLOGICAL DEPARTMENT, MUSCAT (THROUGH RTH JEDDAH)
YEMEN METEOROLOGICAL SERVICES, REPUBLIC OF YEMEN (THROUGH RTH JEDDAH)
NATIONAL CENTRE FOR METEOROLOGY, UAE (THROUGH RTH JEDDAH)
PRESIDENCY OF METEOROLOGY AND ENVIRONMENT, SAUDI ARABIA (THROUGH RTH JEDDAH)
IRAN METEOROLOGICAL ORGANISATION, (THROUGH RTH JEDDAH)
QATAR METEOROLOGICAL DEPARTMENT (THROUGH RTH JEDDAH)
TROPICAL CYCLONE ADVISORY NO. 21 FOR NORTH INDIAN OCEAN (THE BAY OF BENGAL AND ARABIAN SEA) VALID FOR NEXT 120 HOURS ISSUED AT 1400 UTC OF 26.05.2021 BASED ON 1200 UTC OF 26.05.2021.

SUB: SEVERE CYCLONIC STORM ‘YAAS’ (PRONOUNCED AS ‘YASS’) OVER NORTHEAST ODISHA, WEAKENED INTO A CYCLONIC STORM OVER NORTH ODISHA.

THE SEVERE CYCLONIC STORM ‘YAAS’ (PRONOUNCED AS ‘YASS’) OVER NORTHEAST ODISHA MOVED NORTH-NORTHWESTWARDS WITH A SPEED OF ABOUT 10 KMPH DURING PAST 6 HOURS, WEAKENED INTO A **CYCLONIC STORM** AND LAY CENTRED AT 1730 HRS IST OF TODAY, THE 26TH MAY, 2021 OVER NORTH ODISHA, NEAR LATITUDE 21.8°N AND LONGITUDE 86.5°E, ABOUT 55 KM WEST-NORTHWEST OF BALASORE (42985) AND 30 KM WEST-SOUTHWEST OF BARIPADA (42894).

THE SYSTEM IS VERY LIKELY TO MOVE NORTHWESTWARDS AND WEAKEN INTO A CYCLONIC STORM DURING NEXT 3 HOURS.

FORECAST TRACK AND INTENSITY ARE GIVEN IN THE FOLLOWING TABLE:

DATE/TIME(UTC)	POSITION LAT. °N/ LONG. °E	MAXIMUM SUSTAINED SURFACE WIND SPEED (KMPH)	CATEGORY OF CYCLONIC DISTURBANCE
26.05.21/1200	21.8/86.5	75-85 GUSTING TO 95	CYCLONIC STORM
26.05.21/1800	22.3 /86.1	55-65 GUSTING TO 75	DEEP DEPRESSION
27.05.21/0000	22.8/85.7	35-45 GUSTING TO 55	DEPRESSION

THE MAXIMUM SUSTAINED WIND SPEED IS 45 KNOTS GUSTING TO 55 KNOTS AROUND SYSTEM CENTRE. SEA CONDITION IS VERY ROUGH TO HIGH. THE ESTIMATED CENTRAL PRESSURE IS 982 HPA. MAXIMUM WINDS ARE OBSERVED IN THE NORTHEAST & NORTHWEST SECTOR. CYCLONIC STORM YAAS IS MOVING OVER RUGGED TERRAINS. UNDER THE INFLUENCE OF HIGH VERTICAL WIND SHEAR AND WEAK OUTFLOW IN UPPER LEVELS, THE SYSTEM WOULD FURTHER WEAKEN RAPIDLY.

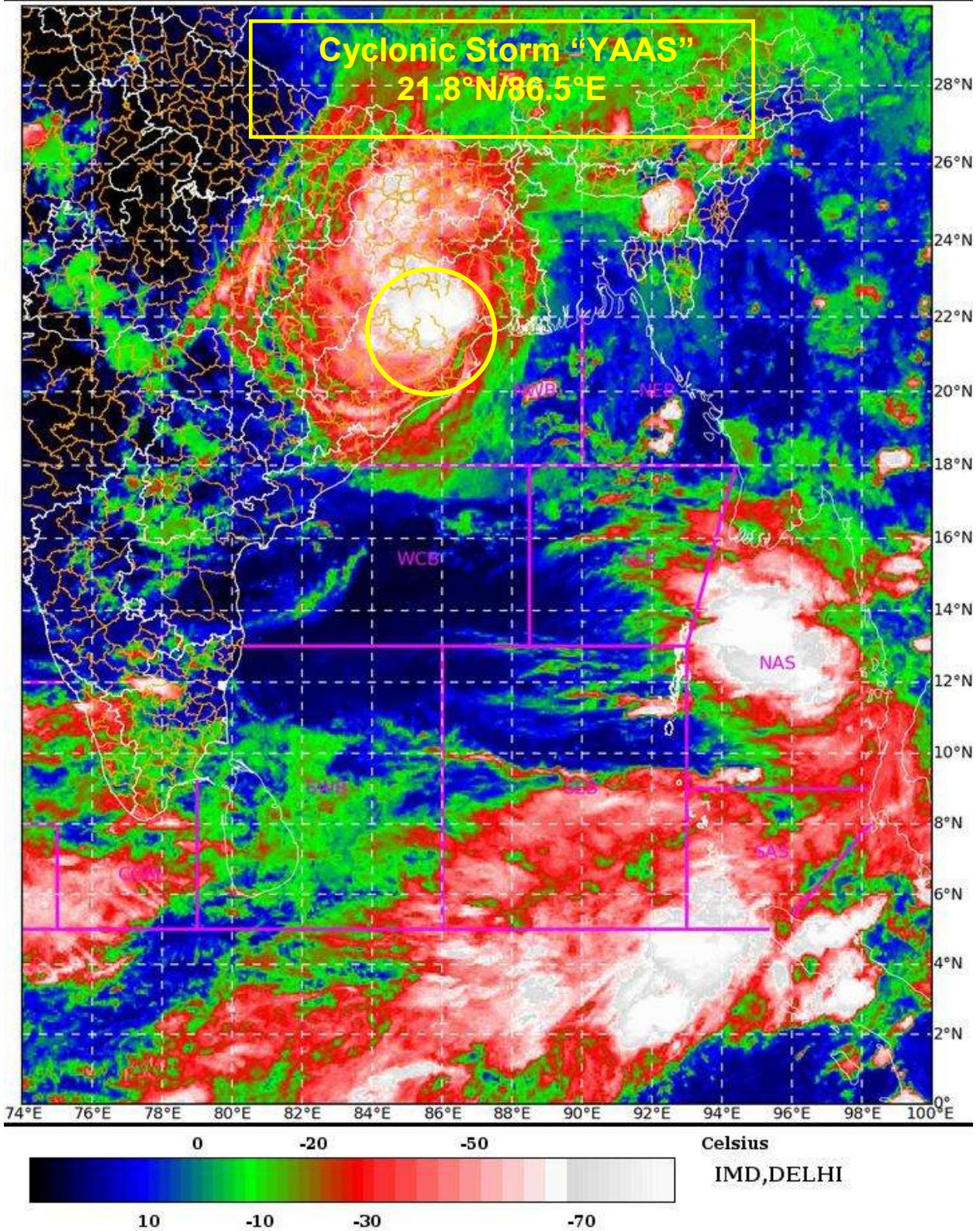
AS PER SATELLITE IMAGERY BASED ON 1200 UTC OF THE 26TH MAY, INTENSE CONVECTIVE CLOUD MASS LIES OVER NORTH ODISHA, JHARKHAND AND ADJOINING SOUTH BIHAR AND MODERATE TO INTENSE CONVECTION LIES OVER SOUTH ODISHA, NORTH CHATTISGARH, NORTH BIHAR AND GANGETIC WEST BENGAL.

(RK JENAMANI)
SCIENTIST-F RSMC NEWDELHI

PROBABILITY OF CYCLOGENESIS (FORMATION OF DEPRESSION)

NIL: 0%, LOW: 1-25%, FAIR: 26-50%, MODERATE: 51-75% AND HIGH: 76-100%

SAT : INSAT-3D IMG 26-05-2021/(1230 to 1256) GMT
IMG_TIR1_TEMP 10.8 um 26-05-2021/(1800 to 1826) IST
L1C Mercator



PROBABILITY OF CYCLOGENESIS (FORMATION OF DEPRESSION)
NIL: 0%, LOW: 1-25%, FAIR: 26-50%, MODERATE: 51-75% AND HIGH: 76-100%



OBSERVED AND FORECAST TRACK ALONGWITH CONE OF UNCERTAINTY OF CYCLONIC STORM "YAAS" OVER NORTH ODISHA BASED ON 1200 UTC OF 26th MAY, 2021



DATE/TIME IN UTC
 IST=UTC + 0530
 L: LOW PRESSURE AREA
 WML: WELL MARKED LOW PRESSURE AREA
 D: DEPRESSION (17-27 KT)
 DD: DEEP DEPRESSION (28-33 KT)
 CS: CYCLONIC STORM (34-47 KT)
 SCS: SEVERE CYCLONIC STORM (48-63KT)
 VSCS: VERY SEVERE CYCLONIC STORM (64-89 KT)
 ESCS: EXTREMELY SEVERE CYCLONIC STORM (90-119 KT)
 SuCS: SUPER CYCLONIC STORM (≥ 120 KT)

- LESS THAN 34 KT
- 34-47 KT
- ≥ 48 KT
- OBSERVED TRACK
- FORECAST TRACK
- CONE OF UNCERTAINTY

PROBABILITY OF CYCLOGENESIS (FORMATION OF DEPRESSION)

NIL: 0%, LOW: 1-25%, FAIR: 26-50%, MODERATE: 51-75% AND HIGH: 76-100%



OBSERVED AND FORECAST TRACK ALONGWITH QUADRANT WIND DISTRIBUTION OF CYCLONIC STORM "YAAS" OVER NORTH ODISHA BASED ON 1200 UTC OF 26th MAY, 2021



DATE/TIME IN UTC

IST=UTC + 0530

L: LOW PRESSURE AREA

WML: WELL MARKED LOW PRESSURE AREA

D: DEPRESSION (17-27 KT)

DD: DEEP DEPRESSION (28-33 KT)

CS: CYCLONIC STORM (34-47 KT)

SCS: SEVERE CYCLONIC STORM (48-63KT)

VSCS: VERY SEVERE CYCLONIC STORM (64-89 KT)

ESCS: EXTREMELY SEVERE CYCLONIC STORM (90-119 KT)

SuCS: SUPER CYCLONIC STORM (≥ 120 KT)

● LESS THAN 34 KT

○ 34-47 KT

● ≥ 48 KT

— OBSERVED TRACK

— FORECAST TRACK

▲ CONE OF UNCERTAINTY

AREA OF MAXIMUM SUSTAINED WIND SPEED:

■ 28-33 KT (52-61 KMPH)

■ 34-49 KT (62-91 KMPH)

■ 50-63 KT (92-117 KMPH)

■ ≥ 64 KT (≥118 KMPH)

IMPACT OVER THE SEA

MSW (knot/kmph)	Impact	Action
28-33 (52-61)	Very rough seas	Total suspension of fishing operations
34-49 (62-91)	High to very high seas	Total suspension of fishing operations
50-63 (92-117)	Very high seas	Total suspension of fishing operations
≥ 64 (≥118)	Phenomenal	Total suspension of fishing operations

PROBABILITY OF CYCLOGENESIS (FORMATION OF DEPRESSION)

NIL: 0%, LOW: 1-25%, FAIR: 26-50%, MODERATE: 51-75% AND HIGH: 76-100%