



**REGIONAL SPECIALISED METEOROLOGICAL CENTRE-TROPICAL CYCLONES, NEW DELHI
SPECIAL TROPICAL WEATHER OUTLOOK**

DEMS-RSMC SPECIAL TROPICAL CYCLONES NEW DELHI DATED 09.08.2022

SPECIAL TROPICAL WEATHER OUTLOOK FOR NORTH INDIAN OCEAN (THE BAY OF BENGAL AND ARABIAN SEA) VALID FOR NEXT 120 HOURS ISSUED AT 0740 UTC OF 09.08.2022 BASED ON 0300 UTC OF 09.08.2022.

BAY OF BENGAL:

YESTERDAYS, WELL MARKED LOW PRESSURE AREA OVER NORTHWEST BAY OF BENGAL & ADJOINING AREAS CONCENTRATED INTO A DEPRESSION AND LAY CENTERED AT 0300 UTC OF TODAY, THE 9TH AUGUST 2022 OVER COASTAL ODISHA & NEIGHBOURHOOD NEAR LATITUDE 20.8°N & LONGITUDE 85.6°E, ABOUT 70 KM NORTH-NORTHWEST OF BHUBANESWAR (42971).

IT IS LIKELY TO MOVE WEST-NORTHWESTWARDS, MAINTAIN ITS INTENSITY TODAY AND WEAKEN GRADUALLY INTO A WELL-MARKED LOW PRESSURE AREA OVER CHHATTISGARH(INDIA) AND NEIGHBOURHOOD TOMORROW.

AS PER INSAT-3D IMAGERY AT 0300 UTC, SCATTERED TO BROKEN LOW AND MEDIUM CLOUDS WITH EMBEDDED INTENSE TO VERY INTENSE CONVECTION LAY OVER ODISHA, SOUTH CHATTISGARH, COASTAL GANGETIC WEST BENGAL & NORTHWEST BAY OF BENGAL. MINIMUM CLOUD TOP TEMPERATURE IS MINUS 93 DEGREE CELSIUS.

THE ASSOCIATED MAXIMUM SUSTAINED WIND SPEED IS 25 KNOTS GUSTING TO 35 KNOTS. THE ESTIMATED CENTRAL PRESSURE IS 992 HPA. SEA CONDITION IS ROUGH TO VERY ROUGH OVER NORTHWEST BAY OF BENGAL.

REMARKS:

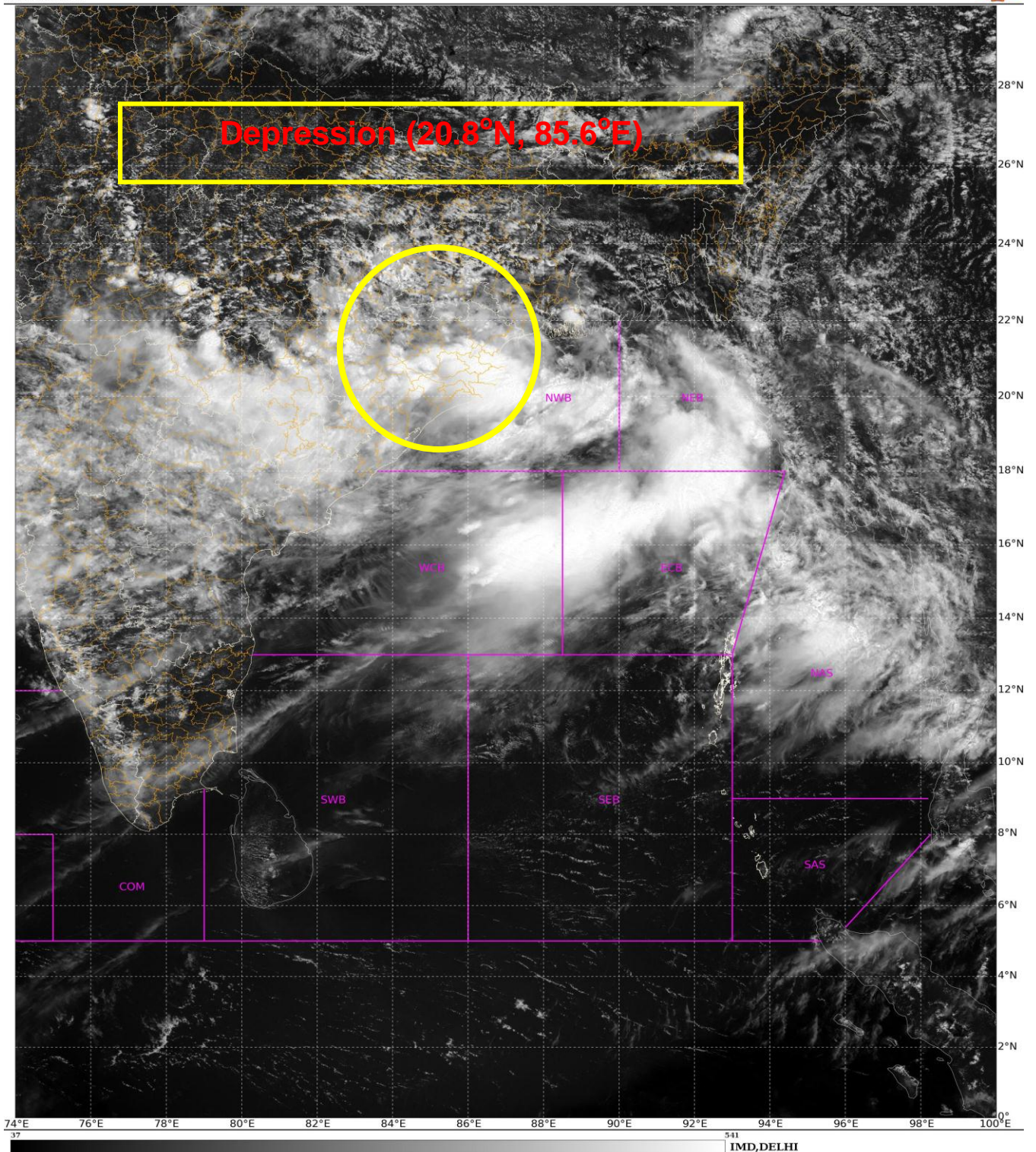
SEA SURFACE TEMPERATURE IS AROUND 30°C OVER NORTHWEST & ADJOINING WESTCENTRAL BAY OF BENGAL (BOB). THE MADDEN JULIAN INDEX (MJO) CURRENTLY LIES IN PHASE 1 WITH AMPLITUDE LESS THAN 1. IT IS LIKELY TO CONTINUE IN SAME PHASE WITH AMPLITUDE REMAINING LESS THAN 1 DURING NEXT 5 DAYS.

LOW LEVEL VORTICITY HAS INCREASED IS AROUND $100 \times 10^{-6} \text{ S}^{-1}$ TO THE SOUTHEAST OF SYSTEM CENTRE OVER NORTHWEST & ADJOINING WESTCENTRAL BAY OF BENGAL. LOW LEVEL CONVERGENCE IS THE SAME DURING PAST 12 HOURS AND IS AROUND $20 \times 10^{-5} \text{ S}^{-1}$ TO THE WEST OF SYSTEM CENTRE OVER CENTRAL INDIA. UPPER LEVEL DIVERGENCE HAS INCREASED DURING PAST 12 HOURS AND IS AROUND $20 \times 10^{-5} \text{ S}^{-1}$ TO THE WEST OF SYSTEM CENTRE OVER CENTRAL INDIA. WIND SHEAR IS MODERATE MODERATE (10-20 KNOTS) OVER THE SYSTEM CENTRE AND WOULD CONTINUE TO REMAIN MODERATE ALONG THE FORECAST TRACK.

MOST OF THE MODELS INDICATE THAT THE SYSTEM WOULD MOVE WEST-NORTHWESTWARDS AND WEAKEN GRADUALLY DURING NEXT 24 HOURS. MODELS ARE ALSO INDICATING LIKELY EMERGENCE OF THE SYSTEM INTO NORTHEAST ARABIAN SEA AROUND 12TH AUGUST.

CONSIDERING ALL THE ABOVE, IT IS INFERRED THAT THE DEPRESSION OVER COASTAL ODISHA IS LIKELY TO MOVE GRADUALLY WESTNORTHWESTWARDS AND WEAKEN INTO A WELL MARKED LOW PRESSURE AREA OVER CHHATTISGARH DURING NEXT 24 HOURS.

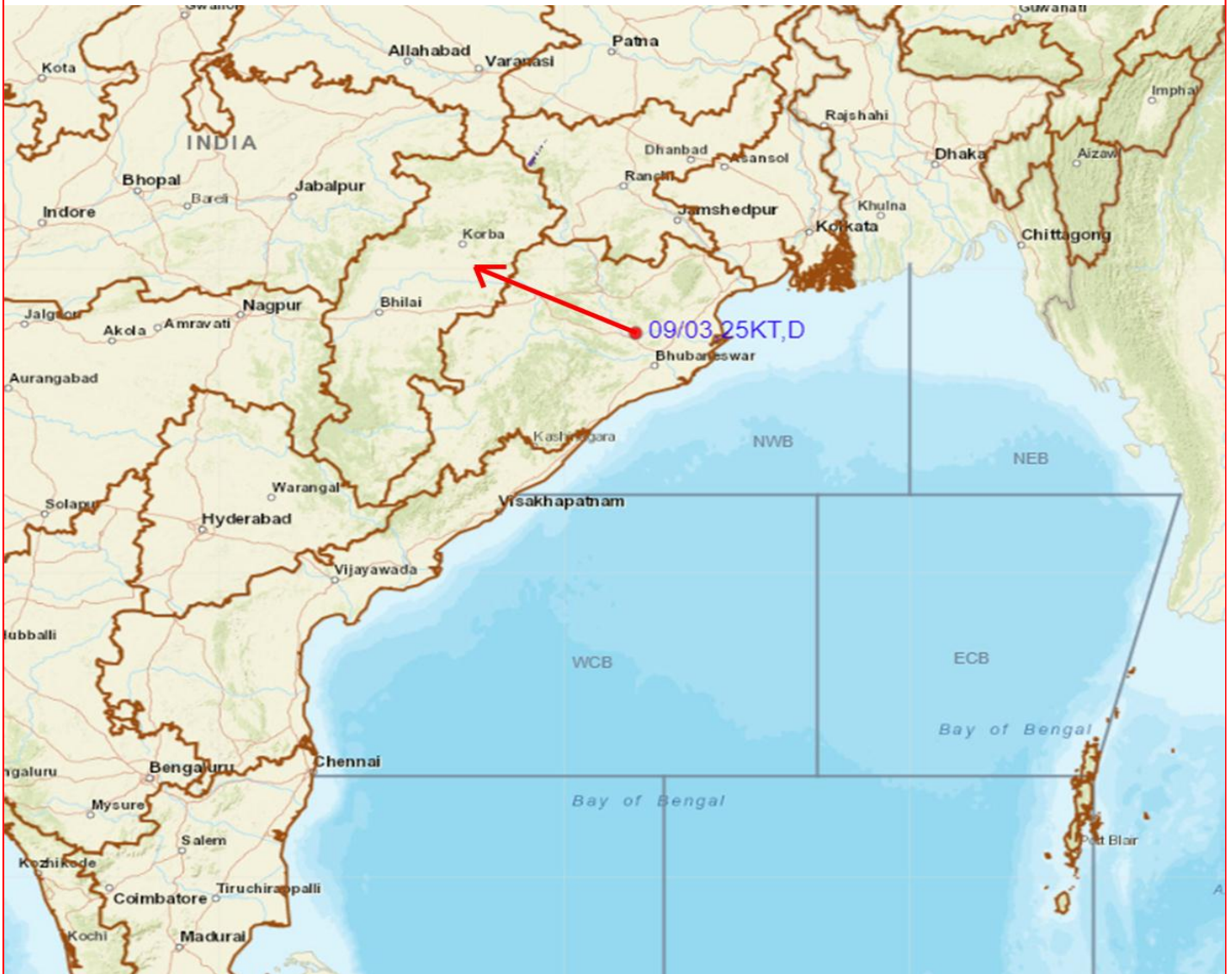
(DR RK JENAMANI)
SCIENTIST-F, RSMC NEW DELHI



Cloud distribution: (a) Isolated: <25%, Scattered:25-50%, Broken: 51-75%, Solid:>75%, Convection Intensity: (a) Weak: Cloud Top Temperature (CTT) >-25°C, (b) Moderate: CTT: - 25°C to -40°C, (c) Intense: CTT: - 41°C to -70°C and (d) Very Intense: : Less than -70°C
PROBABILITY OF CYCLOGENESIS (FORMATION OF DEPRESSION): NIL: 0%, LOW: 1-33%, , MODERATE: 34-66% AND HIGH: 67-100%
This is a guidance Bulletin for WMO/ESCAP Panel Member countries. Visit respective National websites for Country specific Bulletins



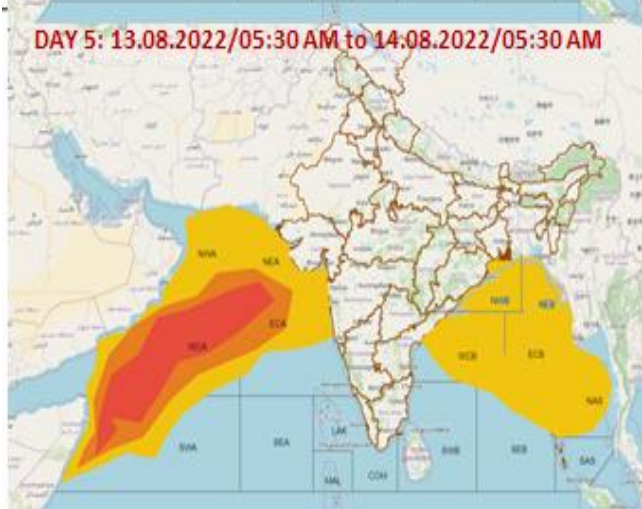
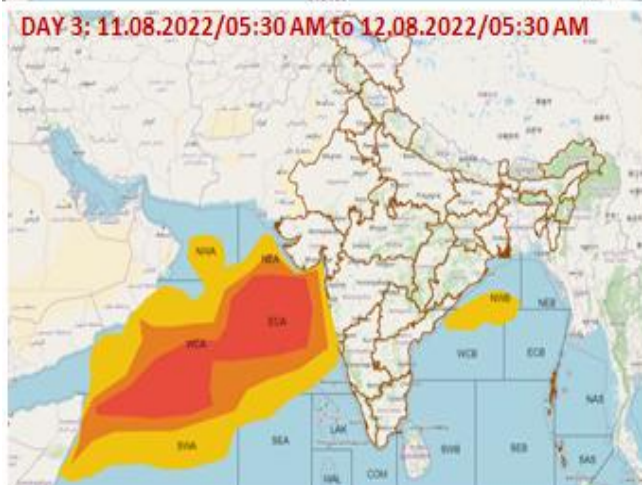
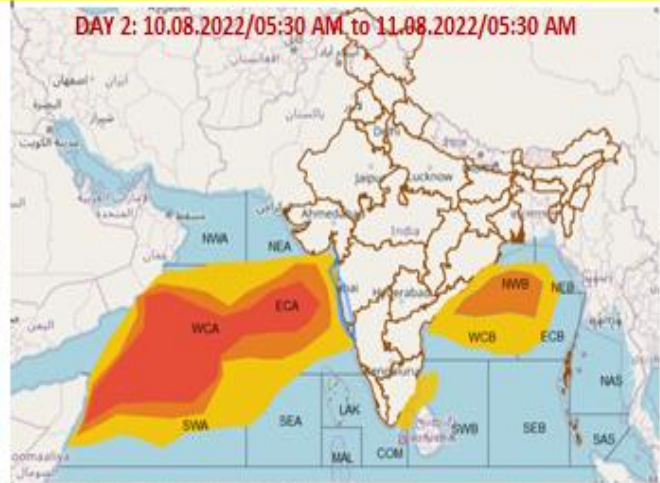
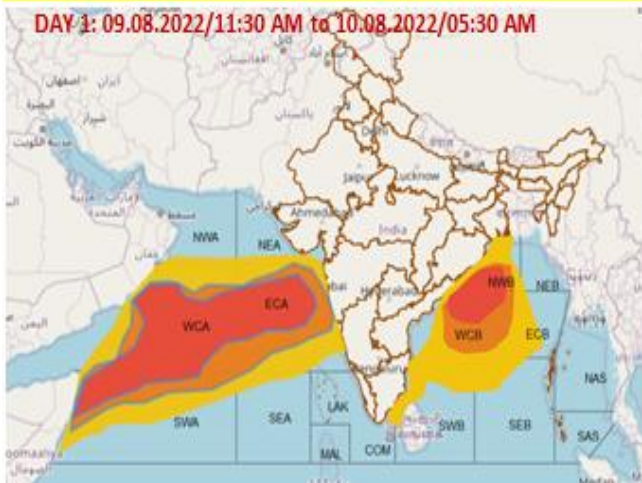
OBSERVED AND FORECAST TRACK OF DEPRESSION OVER COASTAL ODISHA AND NEIGHBORHOOD BASED ON 0300 UTC OF 09TH AUGUST, 2022



DATE/TIME IN UTC
IST=UTC + 0530
L: LOW PRESSURE AREA
WML: WELL MARKED LOW PRESSURE AREA
D: DEPRESSION (17-27 KT)
DD: DEEP DEPRESSION (28-33 KT)
CS: CYCLONIC STORM (34-47 KT)
SCS: SEVERE CYCLONIC STORM (48-63KT)
VSCS: VERY SEVERE CYCLONIC STORM (64-89 KT)
ESCS: EXTREMELY SEVERE CYCLONIC STORM (90-119 KT)
SuCS: SUPER CYCLONIC STORM (≥ 120 KT)

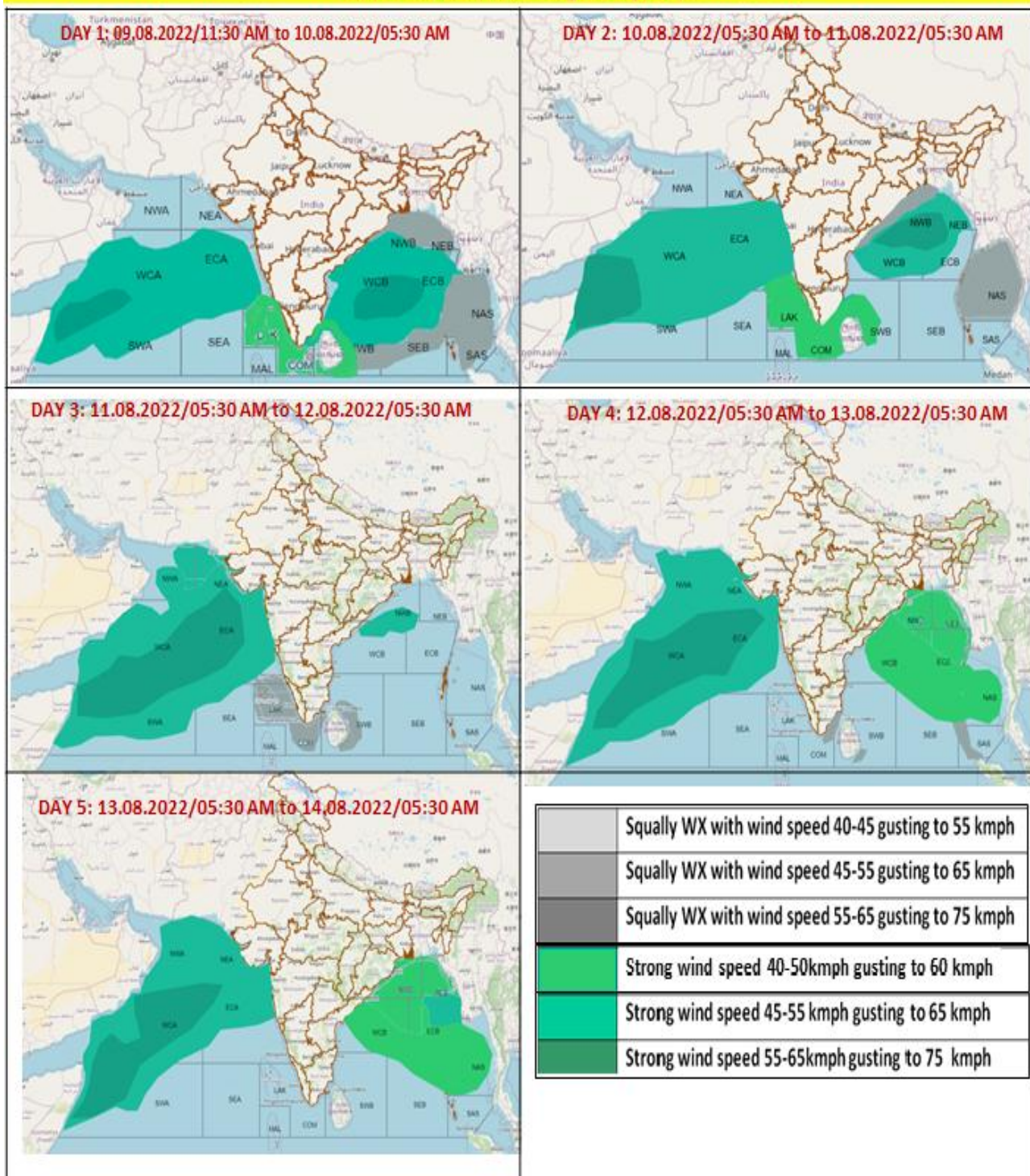
- LESS THAN 34 KT
- 34-47 KT
- ≥ 48 KT
- OBSERVED TRACK
- FORECAST TRACK
- CONE OF UNCERTAINTY

Probability of exceedance of maximum sustained winds ≥ 45 kmph



Probability of exceedance	
	Low (1-33%)
	Moderate (34-67%)
	High (68-100%)

Fishermen Warning Graphics



Cloud distribution: (a) Isolated: <25%, Scattered:25-50%, Broken: 51-75%, Solid:>75%, Convection Intensity: (a) Weak: Cloud Top Temperature (CTT) >25°C, (b) Moderate: CTT: - 25°C to -40°C, (c) Intense: CTT: - 41°C to -70°C and (d) Very Intense: : Less than -70°C
PROBABILITY OF CYCLOGENESIS (FORMATION OF DEPRESSION): NIL: 0%, LOW: 1-33%, , MODERATE: 34-66% AND HIGH: 67-100%
 This is a guidance Bulletin for WMO/ESCAP Panel Member countries. Visit respective National websites for Country specific Bulletins