



**REGIONAL SPECIALISED METEOROLOGICAL CENTRE-TROPICAL CYCLONES, NEW DELHI
TROPICAL WEATHER OUTLOOK**

DEMS-RSMC TROPICALCYCLONES NEW DELHI DATED 22.09.2022

TROPICAL WEATHER OUTLOOK FOR NORTH INDIAN OCEAN (THEBAY OF BENGAL OF BENGAL AND ARABIAN SEA) VALID FOR NEXT 120 HOURS ISSUED AT 0600 UTC OF 22.09.2022 BASED ON 0300 UTC OF 22.09.2022.

BAY OF BENGAL:

YESTERDAY'S LOW PRESSURE AREA OVER NORTHEAST MADHYA PRADESH & ADJOINING SOUTH UTTAR PRADESH HAS BECOME LESS MARKED HOWEVER THE ASSOCIATED CYCLONIC CIRCULATION LIES OVER NORTHWEST MADHYA PRADESH & NEIGHBOURHOOD AND EXTENDS UPTO 5.8 KM ABOVE MEAN SEA LEVEL.

SCATTERED TO BROKEN LOW AND MEDIUM CLOUDS WITH EMBEDDED INTENSE TO VERY INTENSE CONVECTION LAY OVER NORTHWEST BAY OF BENGAL OFF SOUTH ODISHA COAST, WESTCENTRAL BAY OF BENGAL & ADJOINING ANDHRA PRADESH COAST, SOUTHWEST BAY OF BENGAL OFF NORTH TAMILNADU COAST, EASTCENTRAL BAY OF BENGAL, SOUTHEAST BAY OF BENGAL AND ANDAMAN SEA. SCATTERED LOW AND MEDIUM CLOUDS WITH EMBEDDED MODERATE TO INTENSE CONVECTION LAY OVER NORTHEAST BAY OF BENGAL.

PROBABILITY OF CYCLOGENESIS (FORMATION OF DEPRESSION) DURING NEXT 120 HRS:

24 HOURS	24-48 HOURS	48-72 HOURS	72-96 HOURS	96-120 HOURS
NIL	NIL	NIL	NIL	NIL

ARABIAN SEA:

SCATTERED LOW AND MEDIUM CLOUDS WITH EMBEDDED ISOLATED WEAK TO MODERATE CONVECTION LAY OVER GULF OF KUTCH, NORTHEAST ARABIAN SEA OFF GUJARAT COAST & CENTRAL ARABIAN SEA. SCATTERED LOW AND MEDIUM CLOUDS LAY OVER REST ARABIAN SEA.

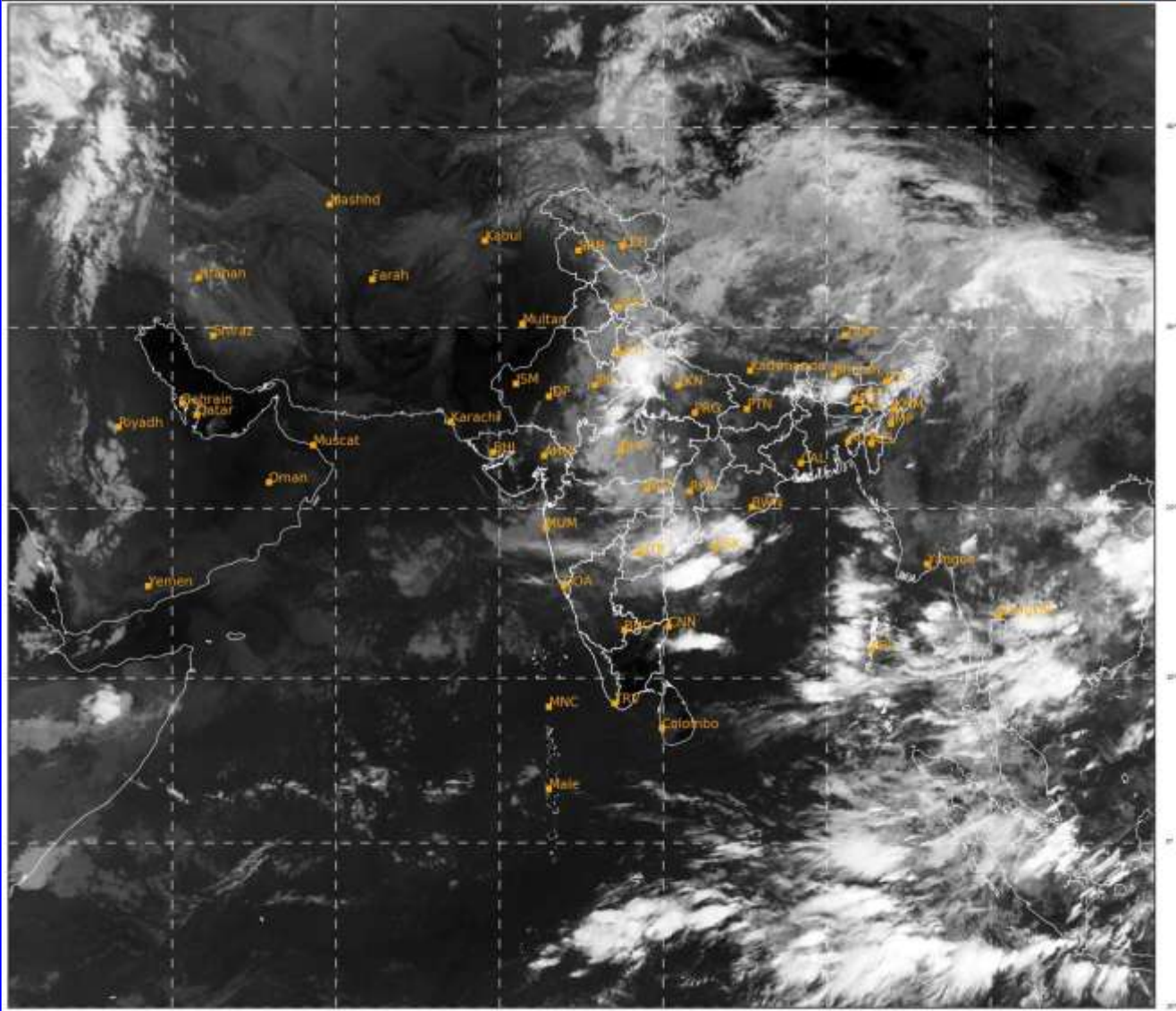
PROBABILITY OF CYCLOGENESIS (FORMATION OF DEPRESSION) DURING NEXT 120 HRS:

24 HOURS	24-48 HOURS	48-72 HOURS	72-96 HOURS	96-120 HOURS
NIL	NIL	NIL	NIL	NIL

Remarks: NIL

SAT : INSAT-3D IMG
IMG_TIR1 10.8 um
LIC Mercator

22-09-2022/(0300 to 0327) GMT
22-09-2022/(0830 to 0857) IST



45.4

927

IMD, DELHI

Cloud distribution: (a) Isolated: <25%, Scattered:25-50%, Broken: 51-75%, Solid:>75%, Convection Intensity: (a) Weak: Cloud Top Temperature (CTT) >-25°C, (b) Moderate: CTT: - 25°C to -40°C, (c) Intense: CTT: - 41°C to -70°C and (d) Very Intense: : Less than -70°C
PROBABILITY OF CYCLOGENESIS (FORMATION OF DEPRESSION):NIL: 0%, LOW: 1-33% , MODERATE: 34-66% AND HIGH: 67-100%
This is a guidance Bulletin for WMO/ESCAP Panel Member countries. Visit respective National websites for Country specific Bulletins