



**REGIONAL SPECIALISED METEOROLOGICAL CENTRE-TROPICAL CYCLONES, NEW DELHI
TROPICAL WEATHER OUTLOOK**

DEMS-RSMC TROPICAL CYCLONES NEW DELHI DATED 29.09.2023

TROPICAL WEATHER OUTLOOK FOR NORTH INDIAN OCEAN (THE BAY OF BENGAL AND THE ARABIAN SEA) VALID FOR NEXT 168 HOURS ISSUED AT 0600 UTC OF 29.09.2023 BASED ON 0300 UTC OF 29.09.2023.

BAY OF BENGAL:

UNDER THE INFLUENCE OF YESTERDAY'S CYCLONIC CIRCULATION OVER MYANMAR & ADJOINING EASTCENTRAL BAY OF BENGAL, A LOW-PRESSURE AREA FORMED OVER NORTHEAST & ADJOINING EASTCENTRAL BAY OF BENGAL AT 0000 UTC OF TODAY THE 29TH SEPTEMBER, 2023. IT PERSISTS OVER THE SAME REGION AT 0300 UTC OF TODAY. IT IS LIKELY TO MOVE NORTHWESTWARDS AND BECOME WELL MARKED LOW PRESSURE AREA OVER NORTHWEST BAY OF BENGAL AND ADJOINING NORTH ODISHA - WEST BENGAL COASTS DURING NEXT 48 HOURS.

ASSOCIATED SCATTERED TO BROKEN LOW AND MEDIUM CLOUDS WITH EMBDDDED INTENSE TO VERY INTENSE CONVECTION LAY OVER MYANMAR COAST EASTCENTRAL BAY OF BENGAL, NORTH BAY OF BENGAL AND NEIGHBOURHOOD. THE MINIMUM CLOUD TOP TEMPERATURE IS MINUS 93 DEG CEL.

SCATTERED TO BROKEN LOW AND MEDIUM CLOUDS WITH EMBEDDED INTENSE TO VERY INTENSE CONVECTION LAY OVER BAY OF BENGAL, NORTH ANDAMAN SEA, ARAKAN COAST AND GULF OF MARTABAN. SCATTERED LOW AND MEDIUM CLOUDS WITH EMBEDDED MODERATE TO INTENSE CONVECTION LAY OVER SOUTH ANDAMAN SEA AND TENASSERIM COAST.

PROBABILITY OF CYCLOGENESIS (FORMATION OF DEPRESSION) DURING NEXT 168 HRS:

| 24 HOURS | 24-48 HOURS | 48-72 HOURS | 72-96 HOURS | 96-120 HOURS | 120-144 HOURS | 144-168 HOURS |
|----------|-------------|-------------|-------------|--------------|---------------|---------------|
| NIL | LOW | NIL | NIL | NIL | NIL | NIL |

ARABIAN SEA:

UNDER THE INFLUENCE OF THE CYCLONIC CIRCULATION OVER NORTH COASTAL KARNATAKA & NEIGHBOURHOOD, A LOW-PRESSURE AREA FORMED OVER EASTCENTRAL ARABIAN SEA OFF SOUTH KONKAN-GOIA COASTS AT 0000 UTC OF TODAY, THE 29TH SEPTEMBER, 2023. IT PERSISTS OVER THE SAME REGION AT 0300 UTC OF TODAY. IT IS LIKELY TO BECOME WELL MARKED LOW PRESSURE AREA OVER THE SAME AREA DURING NEXT 24 HOURS. IT IS LIKELY TO PERSIST OVER THE SAME REGION DURING SUBSEQUENT 24 HOURS.

ASSOCIATED SCATTERED TO BROKEN LOW AND MEDIUM CLOUDS WITH EMBEDDED INTENSE TO VERY INTENSE CONVECTION LAY OVER EASTCENTRAL ARABIAN SEA

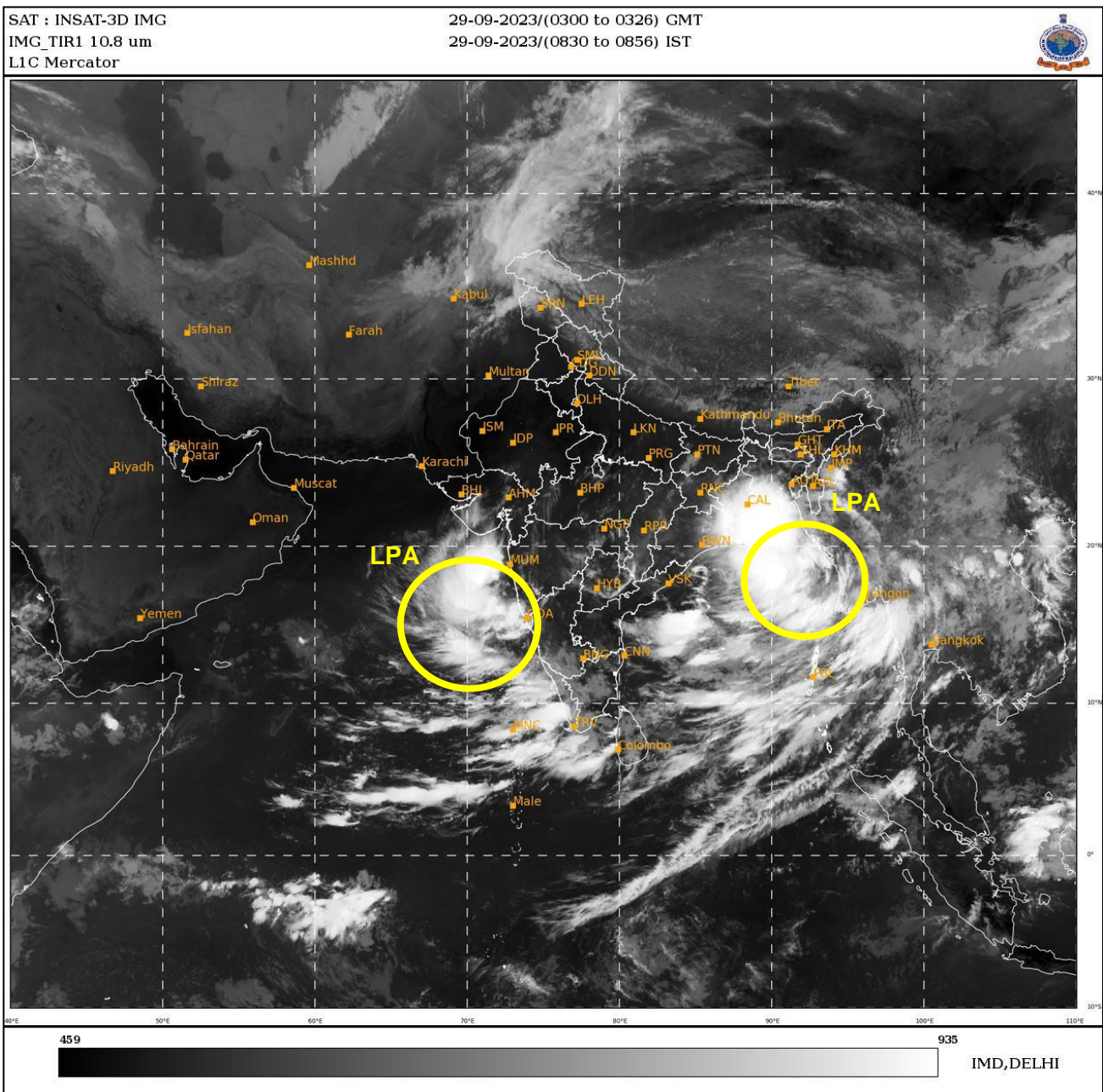
BETWEEN LAT 14.0N TO 20.0N LONG 68.0E TO 74.0E. THE MINIMUM CLOUD TOP TEMPERATURE IS MINUS 93 DEG CEL.

SCATTERED TO BROKEN LOW AND MEDIUM CLOUDS WITH EMBEDDED INTENSE TO VERY INTENSE CONVECTION LAY OVER EASTCENTRAL & SOUTHEAST ARABIAN SEA, LAKSHADWEEP ISLANDS AREA AND COMORIN AREA. SCATTERED LOW AND MEDIUM CLOUDS WITH EMBEDDED MODERATE TO INTENSE CONVECTION LAY OVER NORTHEAST ARABIAN SEA OFF SOUTH GUJARAT COAST AND ISOLATED WEAK TO MODERATE CONVECTION LAY OVER SOUTHWEST ADJOINING WESTCENTRAL ARABIAN SEA.

PROBABILITY OF CYCLOGENESIS (FORMATION OF DEPRESSION) DURING NEXT 168 HRS:

| 24 HOURS | 24-48 HOURS | 48-72 HOURS | 72-96 HOURS | 96-120 HOURS | 120-144 HOURS | 144-168 HOURS |
|----------|-------------|-------------|-------------|--------------|---------------|---------------|
| NIL | LOW | NIL | NIL | NIL | NIL | NIL |

Remarks: NIL



LPA : LOW PRESSURE AREA

Cloud distribution: (a) Isolated: <25%, Scattered:25-50%, Broken: 51-75%, Solid:>75%, Convection Intensity: (a) Weak: Cloud Top Temperature (CTT) >-25°C, (b) Moderate: CTT: - 25°C to -40°C, (c) Intense: CTT: - 41°C to -70°C and (d) Very Intense: : Less than -70°C
 PROBABILITY OF CYCLOGENESIS (FORMATION OF DEPRESSION):NIL: 0%, LOW: 1-33%, , MODERATE: 34-66% AND HIGH: 67-100%
 This is a guidance Bulletin for WMO/ESCAP Panel Member countries. Visit respective National websites for Country specific Bulletins