



**REGIONAL SPECIALISED METEOROLOGICAL CENTRE-TROPICAL CYCLONES, NEW DELHI
TROPICAL WEATHER OUTLOOK**

DEMS-RSMC TROPICAL CYCLONES NEW DELHI DATED 17.10.2023

TROPICAL WEATHER OUTLOOK FOR NORTH INDIAN OCEAN (THE BAY OF BENGAL AND THE ARABIAN SEA) VALID FOR NEXT 168 HOURS ISSUED AT 0600 UTC OF 17.10.2023 BASED ON 0300 UTC OF 17.10.2023.

BAY OF BENGAL:

A CYLONIC CIRCULATION LAY OVER SOUTHEAST BAY OF BENGAL AND ADJOINING ANDAMAN SEA EXTENDING UPTO 3.1 KM ABOVE MEAN SEA LEVEL, AT 0300 UTC OF 17TH OCTOBER, 2023. IT IS LIKELY TO MOVE WEST-NORTHWESTWARDS AND UNDER ITS INFLUENCE A LOW-PRESSURE AREA IS LIKELY TO FORM OVER CENTRAL PARTS OF BAY OF BENGAL AROUND 20TH OCTOBER.

SCATTERED TO BROKEN LOW AND MEDIUM CLOUDS WITH EMBEDDED INTENSE TO VERY INTENSE CONVECTION LAY OVER SOUTH BAY OF BENGAL AND SOUTH ANDAMAN SEA. SCATTERED LOW AND MEDIUM CLOUDS WITH EMBEDDED ISOLATED MODERATE TO INTENSE CONVECTION LAY OVER EASTCENTRAL BAY OF BENGAL AND NORTH ANDAMAN SEA.

PROBABILITY OF CYCLOGENESIS (FORMATION OF DEPRESSION) DURING NEXT 168 HRS:

24 HOURS	24-48 HOURS	48-72 HOURS	72-96 HOURS	96-120 HOURS	120-144 HOURS	144-168 HOURS
NIL	NIL	NIL	NIL	NIL	LOW	LOW

ARABIAN SEA:

YESTERDAY'S CYCLONIC CIRCULATION OVER SOUTHEAST ARABIAN SEA AND ADJOINING LAKSHADWEEP AREA IN LOWER TROPOSPHERIC LEVELS WITH VERTICAL EXTENSION UPTO 3.1 KM ABOVE MEAN SEA LEVEL PERSISTS OVER THE SAME REGION.

UNDER ITS INFLUENCE, A LOW PRESSURE AREA IS LIKELY TO DEVELOP OVER SOUTHEAST & ADJOINING EASTCENTRAL ARABIAN SEA DURING NEXT 36 HOURS. IT IS LIKELY TO MOVE FURTHER WEST-NORTHWESTWARDS AND INTENSIFY INTO A DEPRESSION OVER CENTRAL ARABIAN SEA AROUND 21ST OCTOBER.

SCATTERED LOW AND MEDIUM CLOUDS WITH EMBEDDED MODERATE TO INTENSE CONVECTION LAY OVER CENTRAL & SOUTH ARABIAN SEA LAKSHADWEEP ISLANDS AREA AND COMORIN AREA.

PROBABILITY OF CYCLOGENESIS (FORMATION OF DEPRESSION) DURING NEXT 168 HRS:

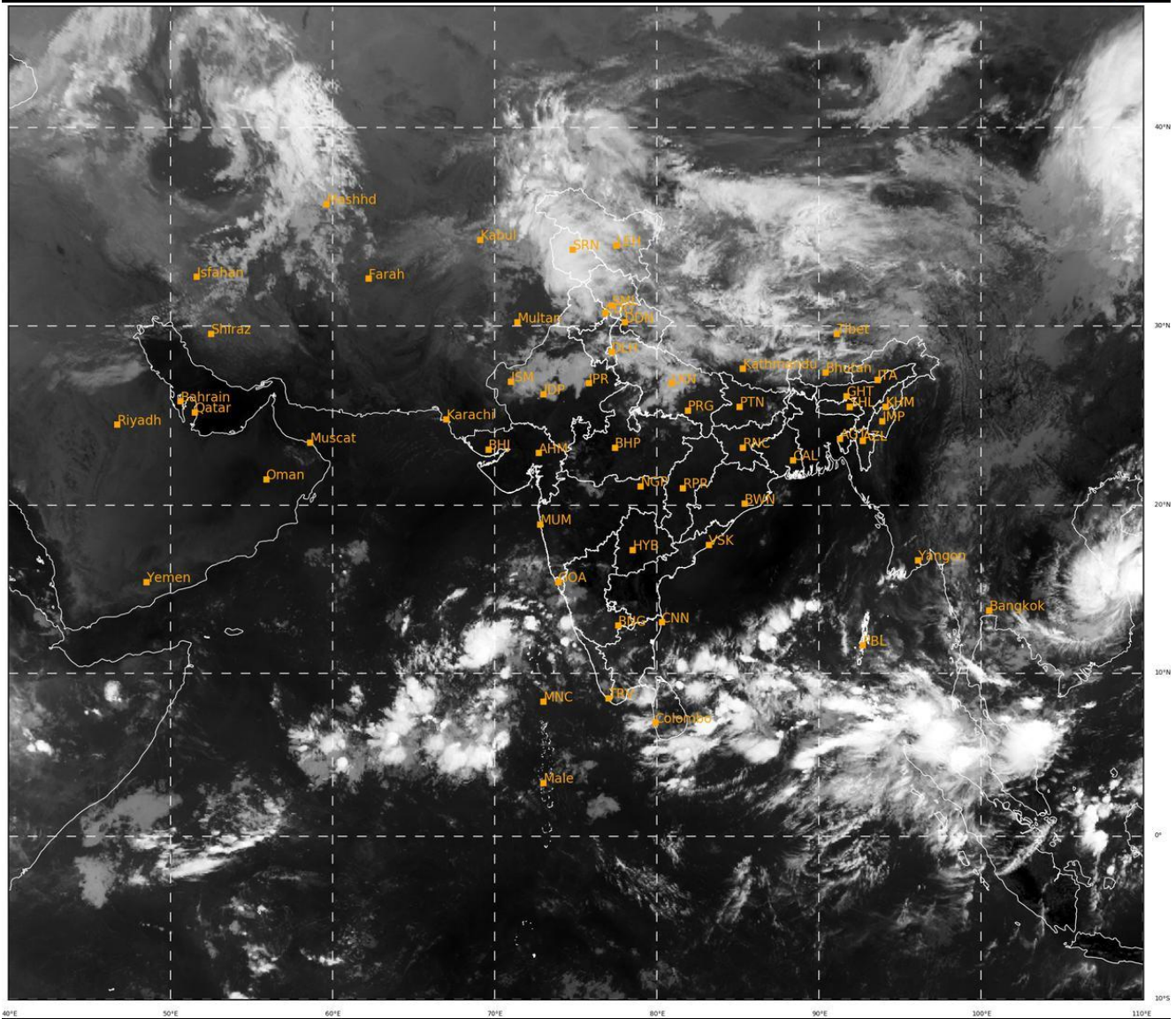
24 HOURS	24-48 HOURS	48-72 HOURS	72-96 HOURS	96-120 HOURS	120-144 HOURS	144-168 HOURS
NIL	NIL	NIL	LOW	MOD	MOD	MOD

Cloud distribution: (a) Isolated: <25%, Scattered:25-50%, Broken: 51-75%, Solid:>75%, Convection Intensity: (a) Weak: Cloud Top Temperature (CTT) >-25°C, (b) Moderate: CTT: - 25°C to -40°C, (c) Intense: CTT: - 41°C to -70°C and (d) Very Intense: : Less than -70°C
PROBABILITY OF CYCLOGENESIS (FORMATION OF DEPRESSION):NIL: 0%, LOW: 1-33%, , MODERATE: 34-66% AND HIGH: 67-100%
This is a guidance Bulletin for WMO/ESCAP Panel Member countries. Visit respective National websites for Country specific Bulletins

Remarks: NIL

SAT : INSAT-3D IMG
IMG_TIR1 10.8 um
LIC Mercator

17-10-2023/(0330 to 0356) GMT
17-10-2023/(0900 to 0926) IST



447

930

IMD,DELHI

Cloud distribution: (a) Isolated: <25%, Scattered:25-50%, Broken: 51-75%, Solid:>75%, Convection Intensity: (a) Weak: Cloud Top Temperature (CTT) >-25°C, (b) Moderate: CTT: - 25°C to -40°C, (c) Intense: CTT: - 41°C to -70°C and (d) Very Intense: : Less than -70°C
PROBABILITY OF CYCLOGENESIS (FORMATION OF DEPRESSION):NIL: 0%, LOW: 1-33%, , MODERATE: 34-66% AND HIGH: 67-100%
This is a guidance Bulletin for WMO/ESCAP Panel Member countries. Visit respective National websites for Country specific Bulletins