



**REGIONAL SPECIALISED METEOROLOGICAL CENTRE-TROPICAL CYCLONES, NEW DELHI  
TROPICAL WEATHER OUTLOOK**

**DEMS-RSMC TROPICAL CYCLONES NEW DELHI DATED 18.08.2023**

**TROPICAL WEATHER OUTLOOK FOR NORTH INDIAN OCEAN (THE BAY OF BENGAL AND THE ARABIAN SEA) VALID FOR NEXT 168 HOURS ISSUED AT 0600 UTC OF 18.08.2023 BASED ON 0300 UTC OF 18.08.2023.**

**BAY OF BENGAL:**

UNDER THE INFLUENCE OF THE YESTERDAY'S CYCLONIC CIRCULATION OVER NORTHWEST BAY OF BENGAL & NEIGHBOURHOOD, A LOW PRESSURE AREA FORMED OVER THE SAME REGION AT 0900 UTC OF YESTERDAY, THE 17TH AUGUST, 2023. THE LOW PRESSURE AREA LAY OVER NORTHWEST BAY OF BENGAL & ADJOINING AREAS OF WEST BENGAL-NORTH ODISHA COASTS AT 0300 UTC OF TODAY, THE 18TH AUGUST, 2023. IT IS LIKELY TO MOVE WEST-NORTHWESTWARDS ACROSS NORTH ODISHA AND NORTH CHHATTISGARH DURING NEXT 2-3 DAYS.

SCATTERED TO BROKEN LOW AND MEDIUM CLOUDS WITH EMBEDDED INTENSE TO VERY INTENSE CONVECTION LAY OVER NORTHWEST & CENTRAL BAY OF BENGAL AND SOUTHWEST BAY OF BENGAL OFF NORTH TAMIL NADU COAST. SCATTERED LOW AND MEDIUM CLOUDS WITH EMBEDDED MODERATE TO INTENSE CONVECTION LAY OVER REST OF BAY OF BENGAL, NORTH ANDAMAN SEA, ARAKAN COAST AND GULF OF MARTABAN. SCATTERED LOW AND MEDIUM CLOUDS WITH ISOLATED WEAK TO MODERATE CONVECTION LAY OVER SOUTH ANDAMAN SEA.

**PROBABILITY OF CYCLOGENESIS (FORMATION OF DEPRESSION) DURING NEXT 168 HRS:**

24 HOURS	24-48 HOURS	48-72 HOURS	72-96 HOURS	96-120 HOURS	120-144 HOURS	144-168 HOURS
NIL	NIL	NIL	NIL	NIL	NIL	NIL

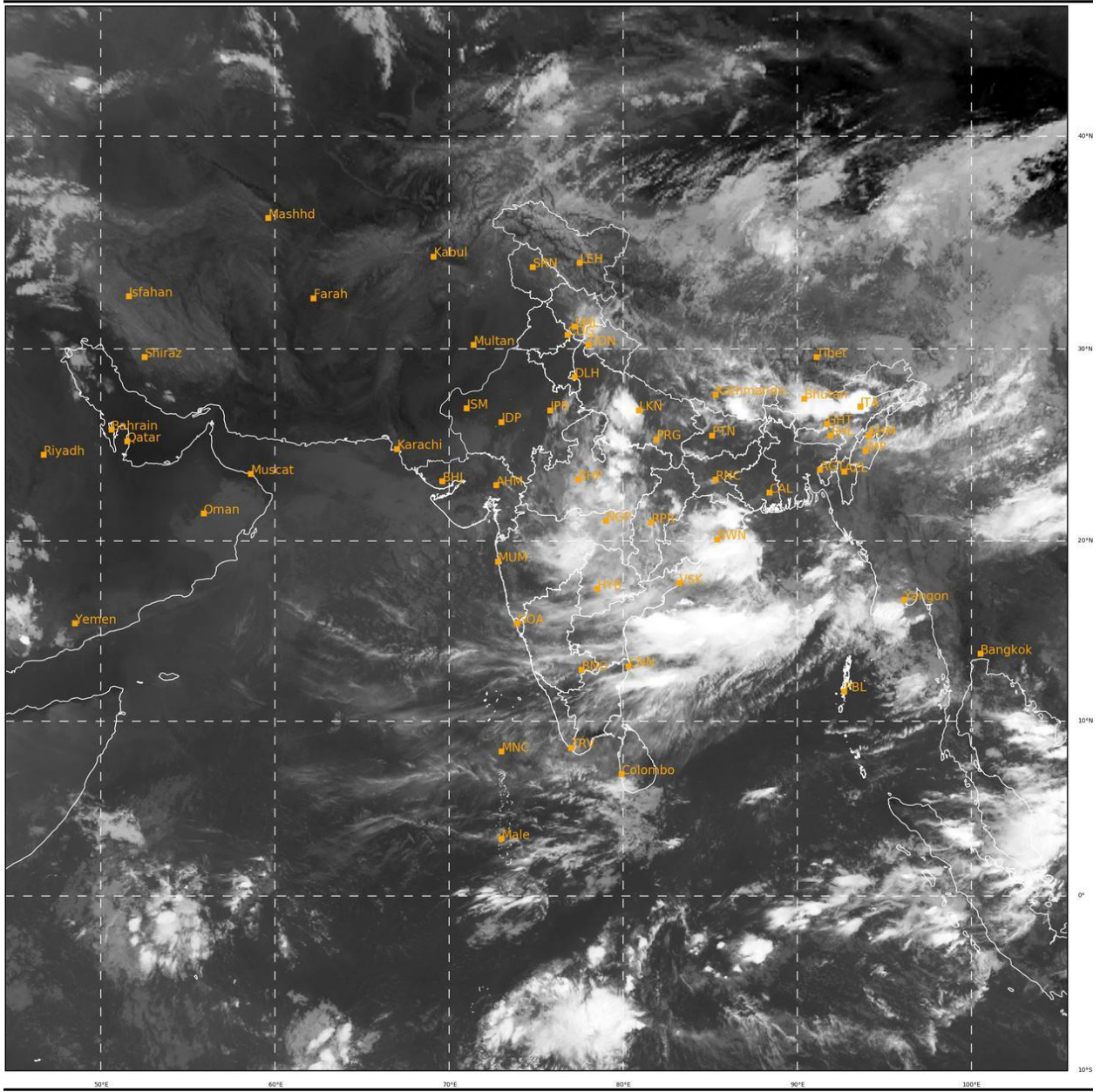
**ARABIAN SEA:**

SCATTERED LOW AND MEDIUM CLOUDS WITH EMBEDDED MODERATE TO INTENSE CONVECTION LAY OVER COMORIN AREA. SCATTERED LOW AND MEDIUM CLOUDS WITH ISOLATED WEAK TO MODERATE CONVECTION LAY OVER CENTRAL & SOUTHEAST ARABIAN SEA AND LAKSHADWEEP ISLANDS AREA.

**PROBABILITY OF CYCLOGENESIS (FORMATION OF DEPRESSION) DURING NEXT 168 HRS:**

24 HOURS	24-48 HOURS	48-72 HOURS	72-96 HOURS	96-120 HOURS	120-144 HOURS	144-168 HOURS
NIL	NIL	NIL	NIL	NIL	NIL	NIL

**Remarks:** NIL



397

930



IMD,DELHI

Cloud distribution: (a) Isolated: <25%, Scattered:25-50%, Broken: 51-75%, Solid:>75%, Convection Intensity: (a) Weak: Cloud Top Temperature (CTT) >-25°C, (b) Moderate: CTT: - 25°C to -40°C, (c) Intense: CTT: - 41°C to -70°C and (d) Very Intense: : Less than -70°C  
PROBABILITY OF CYCLOGENESIS (FORMATION OF DEPRESSION):NIL: 0%, LOW: 1-33%, , MODERATE: 34-66% AND HIGH: 67-100%  
This is a guidance Bulletin for WMO/ESCAP Panel Member countries. Visit respective National websites for Country specific Bulletins