



REGIONAL SPECIALISED METEOROLOGICAL CENTRE-TROPICAL CYCLONES, NEW DELHI  
TROPICAL WEATHER OUTLOOK

**DEMS-RSMC TROPICAL CYCLONES NEW DELHI DATED 07.08.2020**

**TROPICAL WEATHER OUTLOOK FOR NORTH INDIAN OCEAN (THE BAY OF BENGAL AND ARABIAN SEA) VALID FOR NEXT 120 HOURS ISSUED AT 0600 UTC OF 07.08.2020 BASED ON 0300 UTC OF 07.08.2020.**

**BAY OF BENGAL:**

THE LOW PRESSURE AREA OVER SOUTHWEST MADHYA PRADESH AND ADJOINING GUJARAT REGION HAS BECOME LESS MARKED, HOWEVER THE ASSOCIATED CYCLONIC CIRCULATION EXTENDING UPTO 5.8 KM ABOVE MEAN SEA LEVEL PERSISTS.

A FRESH LOW PRESSURE AREA IS LIKELY TO DEVELOP OVER NORTH & ADJOINING WESTCENTRAL BAY OF BENGAL AROUND 9TH AUGUST, 2020.

SCATTERED LOW AND MEDIUM CLOUDS WITH EMBEDDED INTENSE TO VERY INTENSE CONVECTION LAY OVER NORTH & EASTCENTRAL BAY OF BENGAL AND ANDAMAN SEA. SCATTERED LOW AND MEDIUM CLOUDS WITH EMBEDDED MODERATE TO INTENSE CONVECTION LAY OVER SOUTHEAST BAY OF BENGAL. SCATTERED LOW AND MEDIUM CLOUDS WITH EMBEDDED WEAK CONVECTION LAY OVER REST BAY OF BENGAL.

**PROBABILITY OF CYCLOGENESIS (FORMATION OF DEPRESSION) DURING NEXT 120 HRS :**

24 HOURS	24-48 HOURS	48-72 HOURS	72-96 HOURS	96-120 HOURS
NIL	NIL	NIL	NIL	NIL

**ARABIAN SEA:**

BROKEN LOW AND MEDIUM CLOUDS WITH EMBEDDED INTENSE TO VERY INTENSE CONVECTION LAY OVER NORTH ARABIAN SEA AND ADJOINING GUJARAT COASTS ,GULF OF CAMBAY ( MINIMUM CTT MINUS 93<sup>0</sup>C ) . SCATTERED LOW AND MEDIUM CLOUDS WITH EMBEDDED MODERATE TO INTENSE CONVECTION LAY OVER SOUTHEAST ARABIAN SEA. SCATTERED LOW AND MEDIUM CLOUDS WITH EMBEDDED WEAK TO MODERATE CONVECTION LAY OVER REST ARABIAN SEA & GULF OF KUTCH.

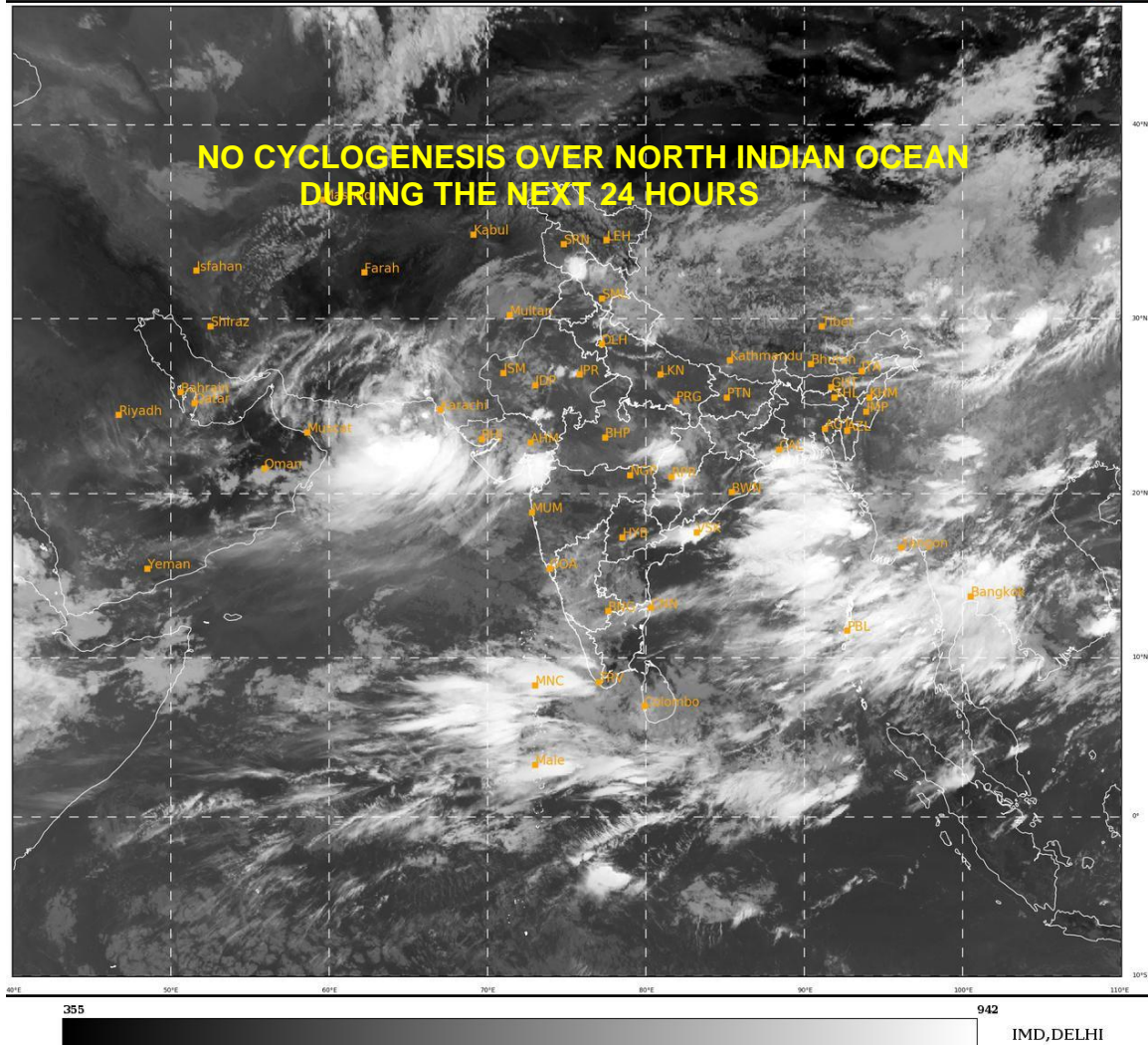
**PROBABILITY OF CYCLOGENESIS (FORMATION OF DEPRESSION) DURING NEXT 120 HRS :**

24 HOURS	24-48 HOURS	48-72 HOURS	72-96 HOURS	96-120 HOURS
NIL	NIL	NIL	NIL	NIL

**REMARKS: NIL**

---

**PROBABILITY OF CYCLOGENESIS (FORMATION OF DEPRESSION)**  
NIL: 0%, LOW: 1-25%, FAIR: 26-50%, MODERATE: 51-75% AND HIGH: 76-100%



**PROBABILITY OF CYCLOGENESIS (FORMATION OF DEPRESSION)**  
**NIL: 0%, LOW: 1-25%, FAIR: 26-50%, MODERATE: 51-75% AND HIGH: 76-100%**