



**REGIONAL SPECIALISED METEOROLOGICAL CENTRE-TROPICAL CYCLONES, NEW DELHI
SPECIAL TROPICAL WEATHER OUTLOOK**

DEMS-RSMC TROPICAL CYCLONES NEW DELHI DATED 13.09.2021

SPECIAL TROPICAL WEATHER OUTLOOK FOR NORTH INDIAN OCEAN (THE BAY OF BENGAL OF BENGAL OF BENGAL AND ARABIAN SEA) VALID FOR NEXT 120 HOURS ISSUED AT 1500 UTC OF 13.09.2021 BASED ON 1200 UTC OF 13.09.2021.

BAY OF BENGAL:

THE DEEP DEPRESSION OVER NORTH ODISHA MOVED FURTHER WEST-NORTHWESTWARDS DURING PAST 6 HOURS WITH A SPEED OF 13 KMPH, AND LAY CENTRED AT 1200 UTC OF 13TH SEPTEMBER, 2021, OVER NORTH INTERIOR ODISHA, NEAR LATITUDE 21.4°N AND LONGITUDE 85.5°E, CLOSE TO KEONJHARGARH (42891).

IT IS VERY LIKELY TO CONTINUE TO MOVE WEST-NORTHWESTWARDS ACROSS NORTH CHHATTISGARH & MADHYA PRADESH DURING NEXT 48 HOURS. IT IS VERY LIKELY TO WEAKEN INTO A DEPRESSION DURING THE NEXT 12 HOURS.

AS PER INSAT 3D IMAGERY AT 1200 UTC, THE SYSTEM IS LYING OVER LAND. ASSOCIATED BROKEN LOW AND MEDIUM CLOUDS WITH EMBEDDED INTENSE TO VERY INTENSE CONVECTION LAY OVER NORTHWEST BAY OF BENGAL, ODISHA AND NEIGHBOURHOOD. MINIMUM CLOUD TOP TEMPERATURE IS -93°C.

THE ESTIMATED MAXIMUM SUSTAINED WIND SPEED IS 30 KNOTS GUSTING TO 35 KNOTS. THE SEA CONDITION IS ROUGH TO VERY ROUGH OVER NORTH & ADJOINING WESTCENTRAL BAY OF BENGAL AND ALONG & OFF ODISHA, WEST BENGAL & NORTH ANDHRA PRADESH COASTS DURING NEXT 12 HOURS. THE ESTIMATED CENTRAL PRESSURE IS 990 HPA.

AT 1200UTC OF 13TH SEP, COASTAL STATIONS OF ODISHA HAVE REPORTED RISE IN MEAN SEA LEVEL PRESSURE (MSLP). MSLP RECORDED AT 1200 UTC BY SAMBHALPUR, KEONJHARGARH AND JHARSIGUDA IS 992.8, 993.1 AND 993.4 HPA WITH 24 HOURS PRESSURE CHANGE OF -4.1 HPA, -4.3 AND -3.5 HPA RESPECTIVELY.

REMARKS:

THE SYSTEM IS LYING OVER LAND. THE PREVAILING ACTIVE MONSOON CONDITIONS, THE EXISTING ENVIRONMENTAL CONDITIONS, AND MODEL GUIDANCE ARE INDICATING THAT THE DEEP DEPRESSION IS LIKELY TO WEAKEN INTO DEPRESSION DURING NEXT 12 HOURS. THE UPPER TROPOSPHERIC RIDGE RUNS NEAR 22 DEG N, TO THE NORTH OF THE SYSTEM CENTRE. THE SYSTEM IS BEING STEERED BY THE MEAN WINDS IN MIDDLE AND UPPER TROPOSPHERE (500-850 HPA LEVELS) TOWARDS WESTNORTHWEST. IT WILL CONTINUE TO STEER SO DURING NEXT 2 DAYS.

THE NEXT BULLETIN WILL BE ISSUED AT 2100 UTC OF 13TH SEPTEMBER, 2021.

**(SUNITHA DEVI)
SCIENTIST-F, RSMC, NEW DELHI**



OBSERVED AND FORECAST TRACK OF DEEP DEPRESSION OVER NORTH INTERIOR ODISHA BASED ON 1200 UTC OF 13TH SEPTEMBER, 2021



DATE/TIME IN UTC
 IST=UTC + 0530
 L: LOW PRESSURE AREA
 WML: WELL MARKED LOW PRESSURE AREA
 D: DEPRESSION (17-27 KT)
 DD: DEEP DEPRESSION (28-33 KT)
 CS: CYCLONIC STORM (34-47 KT)
 SCS: SEVERE CYCLONIC STORM (48-63KT)
 VSXS: VERY SEVERE CYCLONIC STORM (64-89 KT)
 ESXS: EXTREMELY SEVERE CYCLONIC STORM (90-119 KT)
 SuXS: SUPER CYCLONIC STORM (\geq 120 KT)

- LESS THAN 34 KT
- 34-47 KT
- \geq 48 KT
- OBSERVED TRACK
- FORECAST TRACK
- CONE OF UNCERTAINTY

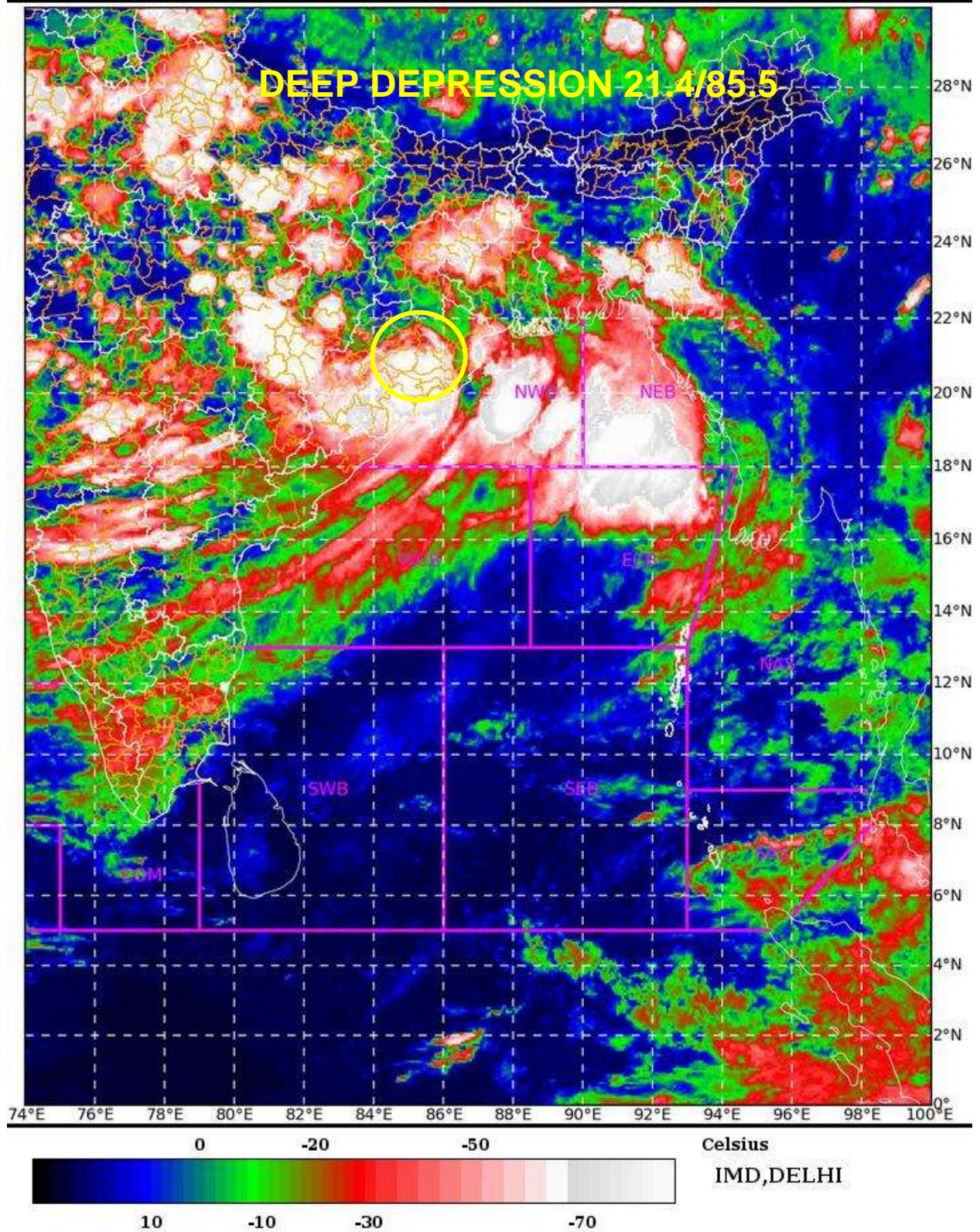
SAT : INSAT-3D IMG

13-09-2021/(1230 to 1256) GMT

IMG_TIR1_TEMP 10.8 um

13-09-2021/(1800 to 1826) IST

L1C Mercator



PROBABILITY OF CYCLOGENESIS (FORMATION OF DEPRESSION):NIL: 0%, LOW: 1-25%, FAIR: 26-50%, MODERATE: 51-75% AND HIGH: 76-100%
This is a guidance Bulletin for the WMO/ESCAP Panel Member countries., Please visit respective National websites for Country specific Bulletins