



REGIONAL SPECIALISED METEOROLOGICAL CENTRE-TROPICAL CYCLONES, NEW DELHI
TROPICAL CYCLONE ADVISORY NO. 20

FROM: RSMC TROPICAL CYCLONES NEW DELHI DATED 10.12.2022

FROM: RSMC –TROPICAL CYCLONES, NEW DELHI

**TO: STORM WARNING CENTRE, NAYPYI TAW (MYANMAR)
STORM WARNING CENTRE, BANGKOK (THAILAND)
STORM WARNING CENTRE, COLOMBO (SRILANKA)
STORM WARNING CENTRE, DHAKA (BANGLADESH)
STORM WARNING CENTRE, KARACHI (PAKISTAN)
METEOROLOGICAL OFFICE, MALE (MALDIVES)
OMAN METEOROLOGICAL DEPARTMENT, MUSCAT (THROUGH RTH JEDDAH)
YEMEN METEOROLOGICAL SERVICES, REPUBLIC OF YEMEN (THROUGH RTH JEDDAH)
NATIONAL CENTRE FOR METEOROLOGY, UAE (THROUGH RTH JEDDAH)
PRESIDENCY OF METEOROLOGY AND ENVIRONMENT, SAUDI ARABIA (THROUGH RTH JEDDAH)
IRAN METEOROLOGICAL ORGANISATION, (THROUGH RTH JEDDAH)
QATAR METEOROLOGICAL DEPARTMENT (THROUGH RTH JEDDAH)**

TROPICAL CYCLONE ADVISORY NO. 20 FOR NORTH INDIAN OCEAN (THE BAY OF BENGAL AND ARABIAN SEA) VALID FOR NEXT 120 HOURS ISSUED AT 1500 UTC OF 10.12.2022 BASED ON 1200 UTC OF 10.12.2022

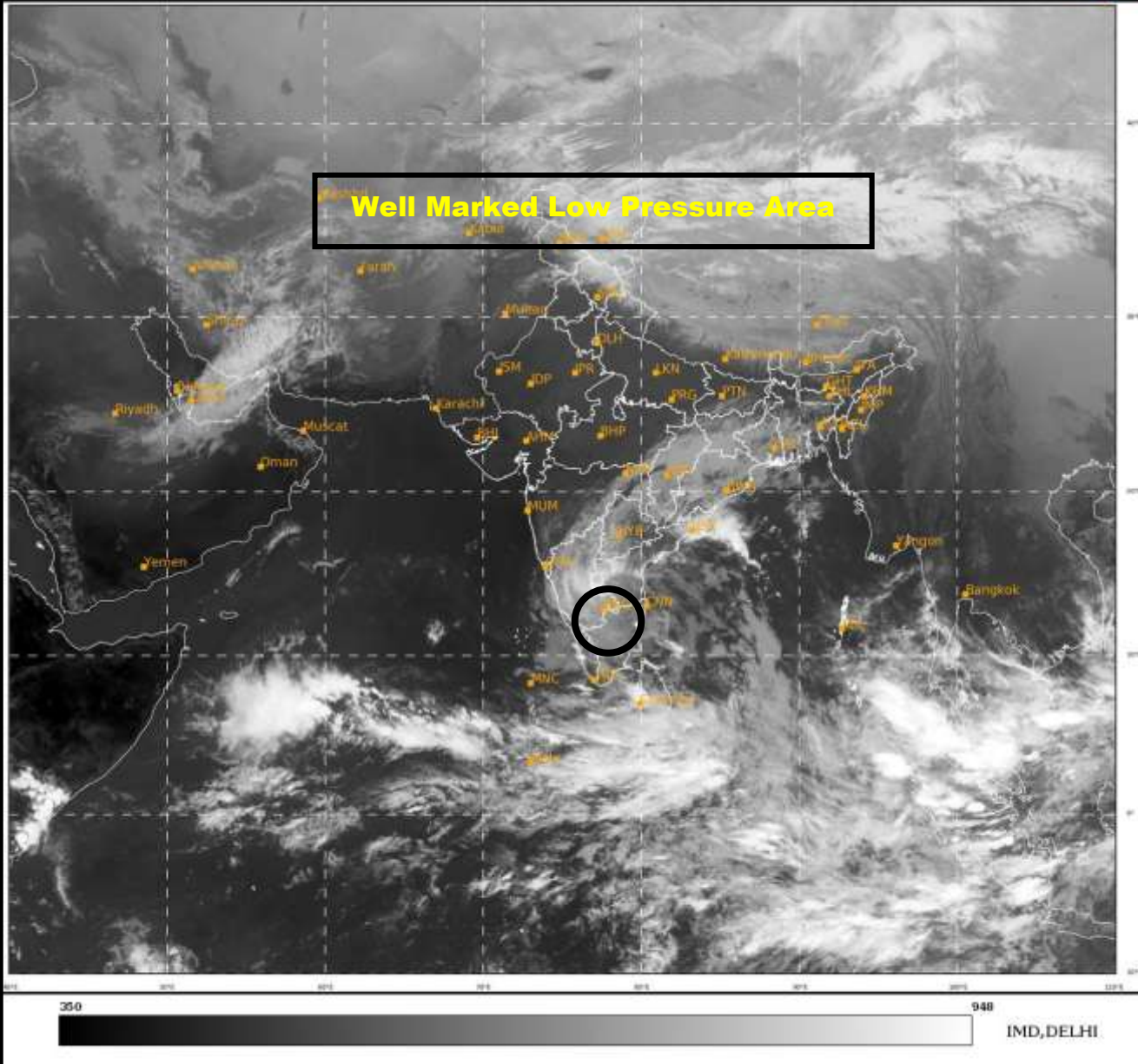
SUB: DEEP DEPRESSION (REMNANT OF THE CYCLONIC STORM “MANDOUS” PRONOUNCED AS “MAN-DOUS”) WEAKENED INTO A WELL MARKED LOW PRESSURE AREA OVER NORTH INTERIOR TAMIL NADU.

THE DEEP DEPRESSION (REMNANT OF THE CYCLONIC STORM “MANDOUS” PRONOUNCED AS “MAN-DOUS”) OVER NORTH TAMIL NADU WEAKENED INTO A DEPRESSION AT 0300 UTC OF TODAY. IT MOVED NEARLY WEST-SOUTHWESTWARDS DURING PAST 06 HOURS, WEAKENED FURTHER AND LAY AS A WELL MARKED LOW PRESSURE AREA OVER NORTH INTERIOR TAMIL NADU AND NEIGHBOURHOOD AT 1200 UTC OF TODAY, THE 10TH DECEMBER 2022. IT IS VERY LIKELY TO MOVE NEARLY WEST-SOUTHWESTWARDS AND WEAKEN GRADUALLY FURTHER.

THIS IS THE LAST BULLETIN IN ASSOCIATION WITH THE SYSTEM. HOWEVER REGULAR WEATHER BULLETINS SHALL CONTINUE FROM THE RESPECTIVE METEOROLOGICAL CENTRES AND NATIONAL WEATHER FORECASTING CENTRE (NWFC), NEW DELHI, INDIA METEOROLOGICAL DEPARTMENT.

(SHOBHIT KATIYAR)

SCIENTIST-C, RSMC, NEW DELHI



Cloud distribution: (a) Isolated: <20%, Scattered: 20-30%, Broken: 31-70%, Solid: 70%, Convection intensity: (a) weak: Cloud top Temperature (CTT) >-25°C, (b) Moderate: CTT: - 25°C to -40°C, (c) Intense: CTT: - 41°C to -70°C and (d) Very Intense: : Less than -70°C
PROBABILITY OF CYCLOGENESIS (FORMATION OF DEPRESSION): NIL: 0%, LOW: 1-33%, , MODERATE: 34-66% AND HIGH: 67-100%
This is a guidance Bulletin for WMO/ESCAP Panel Member countries. Visit respective National websites for Country specific Bulletins



OBSERVED TRACK OF 'WELL MARKED LOW PRESSURE AREA' REMNANT OF CYCLONIC STORM 'MANDOUS' OVER NORTH INTERIOR TAMILNADU BASED ON 1200 UTC OF 10th DECEMBER, 2022.



DATE/TIME IN UTC
 IST=UTC + 0530
 L: LOW PRESSURE AREA
 WML: WELL MARKED LOW PRESSURE AREA
 D: DEPRESSION (17-27 KT)
 DD: DEEP DEPRESSION (28-33 KT)
 CS: CYCLONIC STORM (34-47 KT)
 SCS: SEVERE CYCLONIC STORM (48-63KT)
 VSCS: VERY SEVERE CYCLONIC STORM (64-89 KT)
 ESCS: EXTREMELY SEVERE CYCLONIC STORM (90-119 KT)
 SuCS: SUPER CYCLONIC STORM (\geq 120 KT)

- LESS THAN 34 KT
- 34-47 KT
- \geq 48 KT
- OBSERVED TRACK
- FORECAST TRACK
- CONE OF UNCERTAINTY