



**REGIONAL SPECIALISED METEOROLOGICAL CENTRE-TROPICAL CYCLONES, NEW DELHI
TROPICAL WEATHER OUTLOOK**

DEMS-RSMC TROPICALCYCLONES NEW DELHI DATED 23.08.2022

**TROPICAL WEATHER OUTLOOK FOR NORTH INDIAN OCEAN (THE BAY OF BENGAL OF BENGAL OF BENGAL AND ARABIAN SEA) VALID FOR NEXT 120 HOURS
ISSUED AT 0630UTC OF 23.08.2022 BASED ON 0300 UTC OF 23.08.2022.**

**(A) DEPRESSION WEAKENED INTO A WELL MARKED LOW PRESSURE AREA OVER EAST
RAJASTHAN & ADJOINING NORTHWEST MADHYA PRADESH**

YESTERDAY'S DEPRESSION OVER NORTHWEST MADHYA PRADESH AND ADJOINING SOUTHWEST UTTAR PRADESH MOVED NEARLY WEST-NORTHWESTWARDS AND WEAKENED INTO A WELL MARKED LOW PRESSURE AREA OVER EAST RAJASTHAN AND ADJOINING NORTHWEST MADHYA PRADESH AT 0300 UTC OF TODAY, THE 23RD AUGUST, 2022.

ASSOCIATED MAXIMUM SUSTAINED WIND SPEED IS 15 KNOTS GUSTING TO 25 KNOTS. ESTIMATED CENTRAL PRESSURE IS ABOUT 993 HPA AROUND SYSTEM CENTRE.

AS PER INSAT 3D IMAGERY AT 0300 UTC, VORTEX IS CENTERED NEAR 25.1N/76.5E. CENTER IS POORLY DEFINED. ASSOCIATED SCATTERED TO BROKEN LOW AND MEDIUM CLOUDS WITH EMBEDDED MODERATE TO INTENSE CONVECTION LAY OVER WEST & SOUTHEAST RAJASTHAN, SOUTHWEST MADHYA PRADESH, NORTH GUJARAT AND NORTH MADHYA MAHARASHTRA. MINIMUM CLOUD TOP TEMPERATURE IS MINUS 70⁰C.

THIS IS LAST UPDATE IN ASSOCIATION WITH THIS SYSTEM.

(B)BAY OF BENGAL:

SCATTERED TO BROKEN LOW AND MEDIUM CLOUDS WITH EMBEDDED INTENSE TO VERY INTENSE CONVECTION LAY OVER NORTHBAY OF BENGAL AND NORTH ANDAMAN SEA. SCATTERED LOW AND MEDIUM CLOUDS WITH EMBEDDED MODERATE TO INTENSE CONVECTION OVER SOUTH BAY OF BENGAL AND SOUTH ANDAMAN SEA.

PROBABILITY OF CYCLOGENESIS (FORMATION OF DEPRESSION) DURING NEXT 120 HRS:

24 HOURS	24-48 HOURS	48-72 HOURS	72-96 HOURS	96-120 HOURS
NIL	NIL	NIL	NIL	NIL

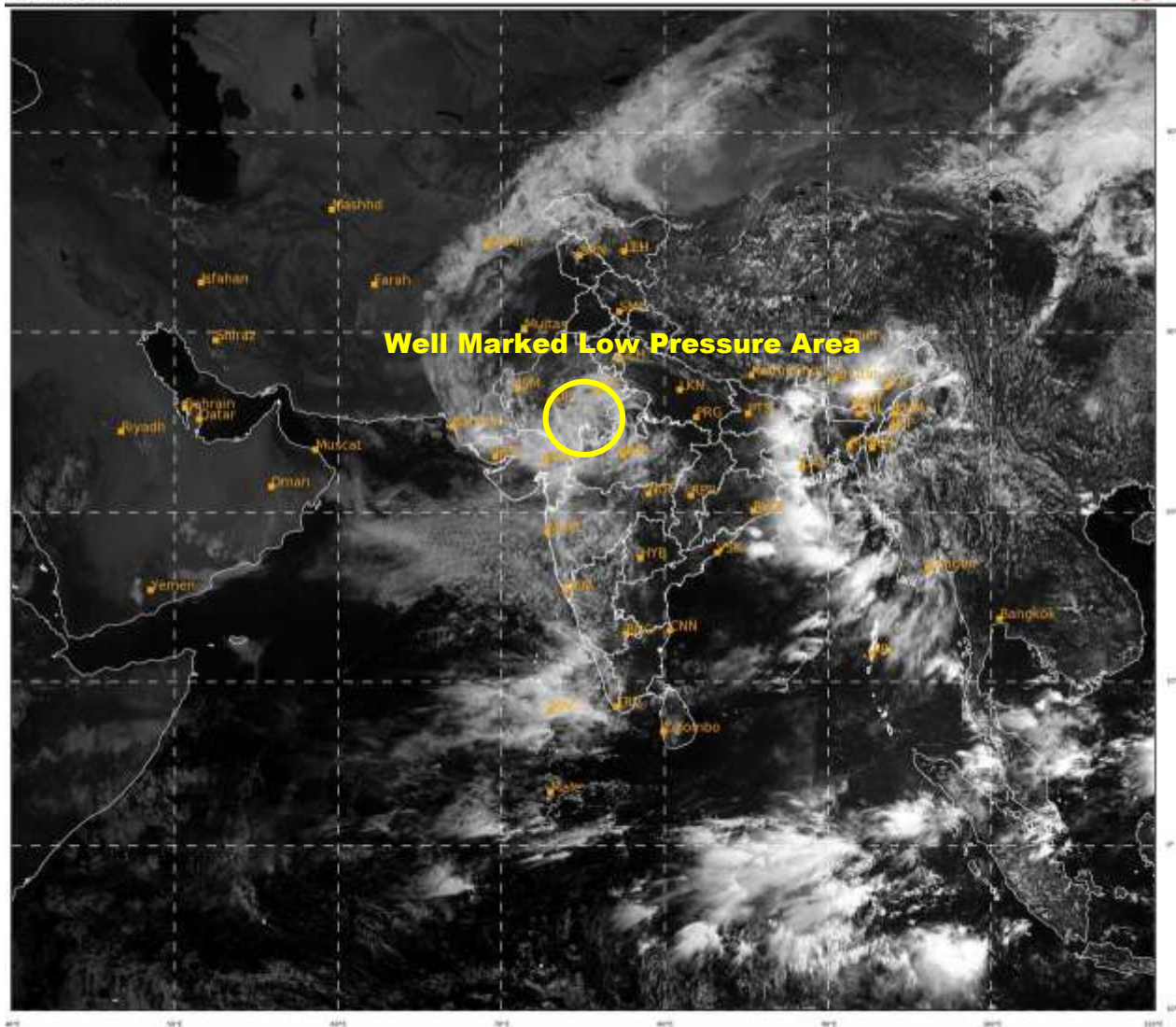
(C) ARABIAN SEA:

YESTERDAY'S LOW PRESSURE AREA OVER SOUTHEAST PAKISTAN AND NEIGHBOURHOOD MERGED WITH THE WELL MARKED LOW PRESSURE AREA OVER EAST RAJASTHAN & ADJOINING NORTHWEST MADHYA PRADESH AT 0300 UTC OF TODAY, THE 23RD AUGUST, 2022.

SCATTERED TO BROKEN LOW AND MEDIUM CLOUDS WITH EMBEDDED INTENSE TO VERY INTENSE CONVECTION LAY OVER SOUTHEAST ARABIAN SEA AND LAKSHADWEEPISLANDS AREA. SCATTERED LOW AND MEDIUM CLOUDS WITH EMBEDDED MODERATE TO INTENSE CONVECTION LAY OVER GULF OF CAMBAY AND COMORIN AREA. SCATTERED LOW AND MEDIUM CLOUDS WITH EMBEDDED WEAK TO MODERATE CONVECTION LAY OVER NORTHEAST & EASTCENTRAL ARABIAN SEA AND GULF OF KUTCH.

PROBABILITY OF CYCLOGENESIS (FORMATION OF DEPRESSION) DURING NEXT 120 HRS:

24 HOURS	24-48 HOURS	48-72 HOURS	72-96 HOURS	96-120 HOURS
NIL	NIL	NIL	NIL	NIL



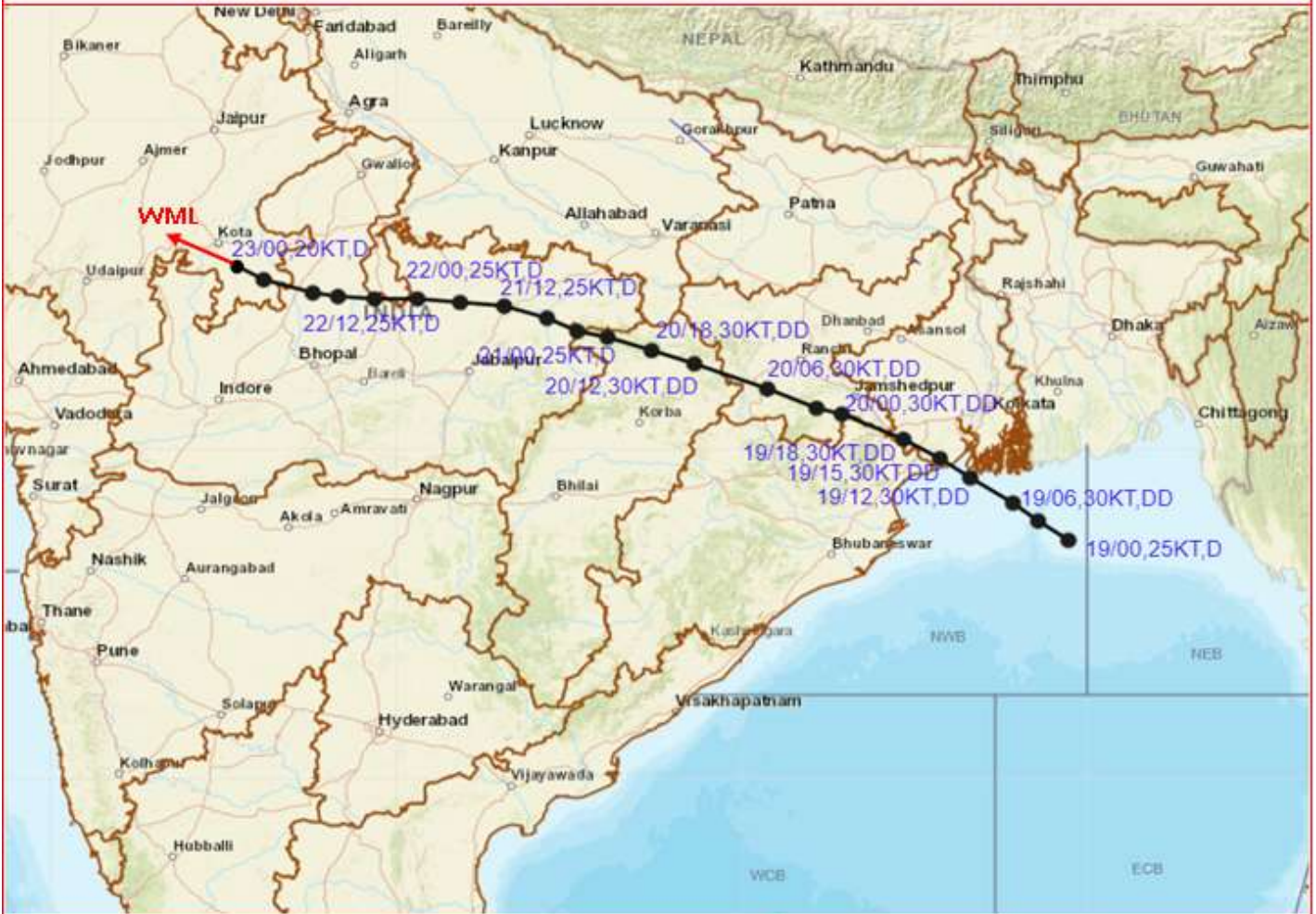
18

528

IMD, DELHI



OBSERVED TRACK OF DEEP DEPRESSION OVER NORTHWEST BAY OF BENGAL DURING 19th - 23rd AUGUST, 2022



DATE/TIME IN UTC
 IST=UTC + 0530
 L: LOW PRESSURE AREA
 WML: WELL MARKED LOW PRESSURE AREA
 D: DEPRESSION (17-27 KT)
 DD: DEEP DEPRESSION (28-33 KT)
 CS: CYCLONIC STORM (34-47 KT)
 SCS: SEVERE CYCLONIC STORM (48-63KT)
 VSCS: VERY SEVERE CYCLONIC STORM (64-89 KT)
 ESCS: EXTREMELY SEVERE CYCLONIC STORM (90-119 KT)
 SuCS: SUPER CYCLONIC STORM (≥ 120 KT)

- LESS THAN 34 KT
- 34-47 KT
- ≥ 48 KT
- OBSERVED TRACK
- FORECAST TRACK
- CONE OF UNCERTAINTY

Kindly visit www.rsmcnewdelhi.imd.gov.in for Fishermen Warning Graphics for next 5 days

Cloud distribution: (a) Isolated: <25%, Scattered:25-50%, Broken: 51-75%, Solid:>75%, Convection Intensity: (a) Weak: Cloud Top Temperature (CTT) >-25°C, (b) Moderate: CTT: - 25°C to -40°C, (c) Intense: CTT: - 41°C to -70°C and (d) Very Intense: : Less than -70°C
 PROBABILITY OF CYCLOGENESIS (FORMATION OF DEPRESSION):NIL: 0%, LOW: 1-33%, , MODERATE: 34-66% AND HIGH: 67-100%
 This is a guidance Bulletin for WMO/ESCAP Panel Member countries. Visit respective National websites for Country specific Bulletins