



REGIONAL SPECIALISED METEOROLOGICAL CENTRE-TROPICAL CYCLONES, NEW DELHI
TROPICAL CYCLONE ADVISORY BULLETIN NO. 25

FROM: RSMC –TROPICAL CYCLONES, NEW DELHI

TO: STORM WARNING CENTRE, NAYPYI TAW (MYANMAR)
STORM WARNING CENTRE, BANGKOK (THAILAND)
STORM WARNING CENTRE, COLOMBO (SRILANKA)
STORM WARNING CENTRE, DHAKA (BANGLADESH)
STORM WARNING CENTRE, KARACHI (PAKISTAN)
METEOROLOGICAL OFFICE, MALE (MALDIVES)
OMAN METEOROLOGICAL DEPARTMENT, MUSCAT (THROUGH RTH JEDDAH)
YEMEN METEOROLOGICAL SERVICES, REPUBLIC OF YEMEN (THROUGH RTH JEDDAH)
NATIONAL CENTRE FOR METEOROLOGY, UAE (THROUGH RTH JEDDAH)
PRESIDENCY OF METEOROLOGY AND ENVIRONMENT, SAUDI ARABIA (THROUGH RTH JEDDAH)
IRAN METEOROLOGICAL ORGANISATION, (THROUGH RTH JEDDAH)
QATAR METEOROLOGICAL DEPARTMENT (THROUGH RTH JEDDAH)

TROPICAL CYCLONE ADVISORY NO. 25 FOR NORTH INDIAN OCEAN (THE BAY OF BENGAL AND ARABIAN SEA) VALID FOR NEXT 120 HOURS ISSUED AT 2020 UTC OF 17.05.2021 BASED ON 1800 UTC OF 17.05.2021.

SUB: EXTREMELY SEVERE CYCLONIC STORM “TAUKTAE” (PRONOUNCED AS TAU’TE) OVER NORTHEAST ARABIAN SEA CROSSED SAURASHTRA COAST

THE **EXTREMELY SEVERE CYCLONIC STORM “TAUKTAE” (PRONOUNCED AS TAU’TE)** OVER NORTHEAST ARABIAN SEA MOVED NORTH-NORTHWESTWARDS WITH A SPEED OF ABOUT 15 KMPH, DURING PAST 06 HOURS AND CROSSED SAURASHTRA COAST BETWEEN 1430-1730 UTC OF 17TH MAY, WITH WIND SPEED OF 160-170 KMPH GUSTING TO 190 KMPH, CLOSE TO ABOUT 30 KM NORTHEAST OF DIU(42914) NEAR LATITUDE 20.8°N AND LONGITUDE 71.1°E AND WEAKENED INTO A VERY SEVERE CYCLONIC STORM AND NOW LAY CENTRED AT 1800 UTC OF 17TH MAY, 2021 OVER SAURASHTRA NEAR LATITUDE 20.9°N AND LONGITUDE 71.1°E, ABOUT 280 KM SOUTH-SOUTHWEST OF AHMEDABAD(42647).

IT IS VERY LIKELY TO MOVE NORTH-NORTHEASTWARDS AND WEAKEN GRADUALLY INTO A SEVERE CYCLONIC STORM BY 0300UTC, THE 18TH MAY.

FORECAST TRACK AND INTENSITY ARE GIVEN IN THE FOLLOWING TABLE:

| DATE/TIME(UTC) | POSITION (LAT. °N/ LONG. °E) | MAXIMUM SUSTAINED SURFACE WIND SPEED (KMPH) | CATEGORY OF CYCLONIC DISTURBANCE |
|-----------------------|-------------------------------------|--|---|
| 17.05.21/1800 | 20.9/71.1 | 150-160 GUSTING TO 175 | VERY SEVERE CYCLONIC STORM |
| 18.05.21/0000 | 21.6/71.2 | 110-120 GUSTING TO 130 | SEVERE CYCLONIC STORM |
| 18.05.21/0600 | 22.5/71.5 | 70-80 GUSTING TO 90 | CYCLONIC STORM |
| 18.05.21/1200 | 23.4/71.8 | 65-75 GUSTING TO 85 | CYCLONIC STORM |
| 18.05.21/1800 | 24.3/72.2 | 50-60 GUSTING TO 70 | DEEP DEPRESSION |
| 19.05.21/0600 | 25.1/72.6 | 35-45 GUSTING TO 55 | DEPRESSION |

PROBABILITY OF CYCLOGENESIS (FORMATION OF DEPRESSION)

NIL: 0%, LOW: 1-25%, FAIR: 26-50%, MODERATE: 51-75% AND HIGH: 76-100%

REMARKS:

AS PER INSAT-3D SATELLITE IMAGERY BASED ON 1800 UTC OF TODAY THE 17th MAY 2021, A VORTEX IS SEEN OVER NORTHEAST ARABIAN SEA (NEAR SOUTH GUJARAT COAST) WITH LARGE RAGGED EYE. EYE TEMPERATURE MINUS 13.0 DEG C. BROKEN LOW AND MEDIUM CLOUDS WITH EMBEDDED INTENSE TO VERY INTENSE CONVECTION LAY OVER EASTCENTRAL & ADJOINING NORTHEAST ARABIAN SEA (AS) BETWEEN LATITUDE 16.0°N & 22.5°N AND EAST OF LONG 68.0E AND ALSO OVER GULF OF CAMBAY, GUJARAT, KONKAN GOA AND NORTH MADHYA MAHARASHTRA. MINIMUM CLOUD TOP TEMPERATURE IS -93°C.

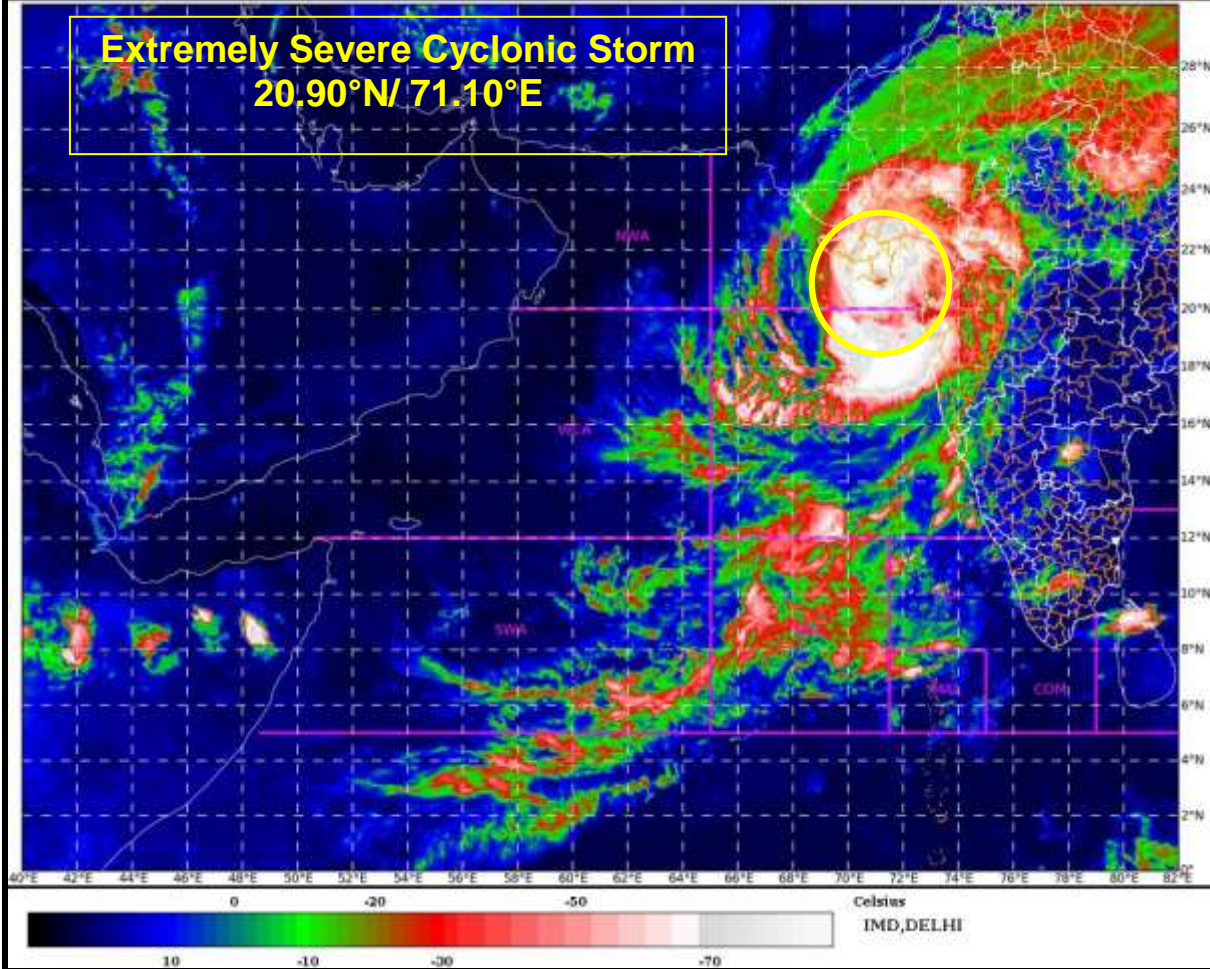
THE ASSOCIATED MAXIMUM SUSTAINED WIND SPEED IS 90 KNOTS GUSTING TO 100KNOTS. THE ESTIMATED CENTRAL PRESSURE IS 960HPA. SEA CONDITION IS PHENOMENAL.

THE LOW LEVEL CYCLONIC VORTICITY HAS REDUCED AND IS ABOUT $250-300 \times 10^{-6} \text{ S}^{-1}$ AROUND SYSTEM CENTRE. LOW LEVEL CONVERGENCE IS $(40 \times 10^{-5} \text{ S}^{-1})$ TO THE SOUTHEAST OF SYSTEM CENTRE. POSITIVE UPPER LEVEL DIVERGENCE IS $(30 \times 10^{-5} \text{ S}^{-1})$ AND LIES TO THE SOUTH OF THE SYSTEM CENTRE.. UPPER TROPOSPHERIC RIDGE RUNS ALONG 21°N. SYSTEM LIKELY TO MOVE NORTHNORTHEAST WARDS AND WEAKEN TO A SVERE CYCLONIC STORM DURING NEXT 3 HOURS DUE TO CONTINIOUS INTERACTION OF THE SYSTEM WITH LAND TERAAIN.

(RK J ENAMANI)
SCIENTIST-F
RSMC, NEW DELHI

PROBABILITY OF CYCLOGENESIS (FORMATION OF DEPRESSION)

NIL: 0%, LOW: 1-25%, FAIR: 26-50%, MODERATE: 51-75% AND HIGH: 76-100%

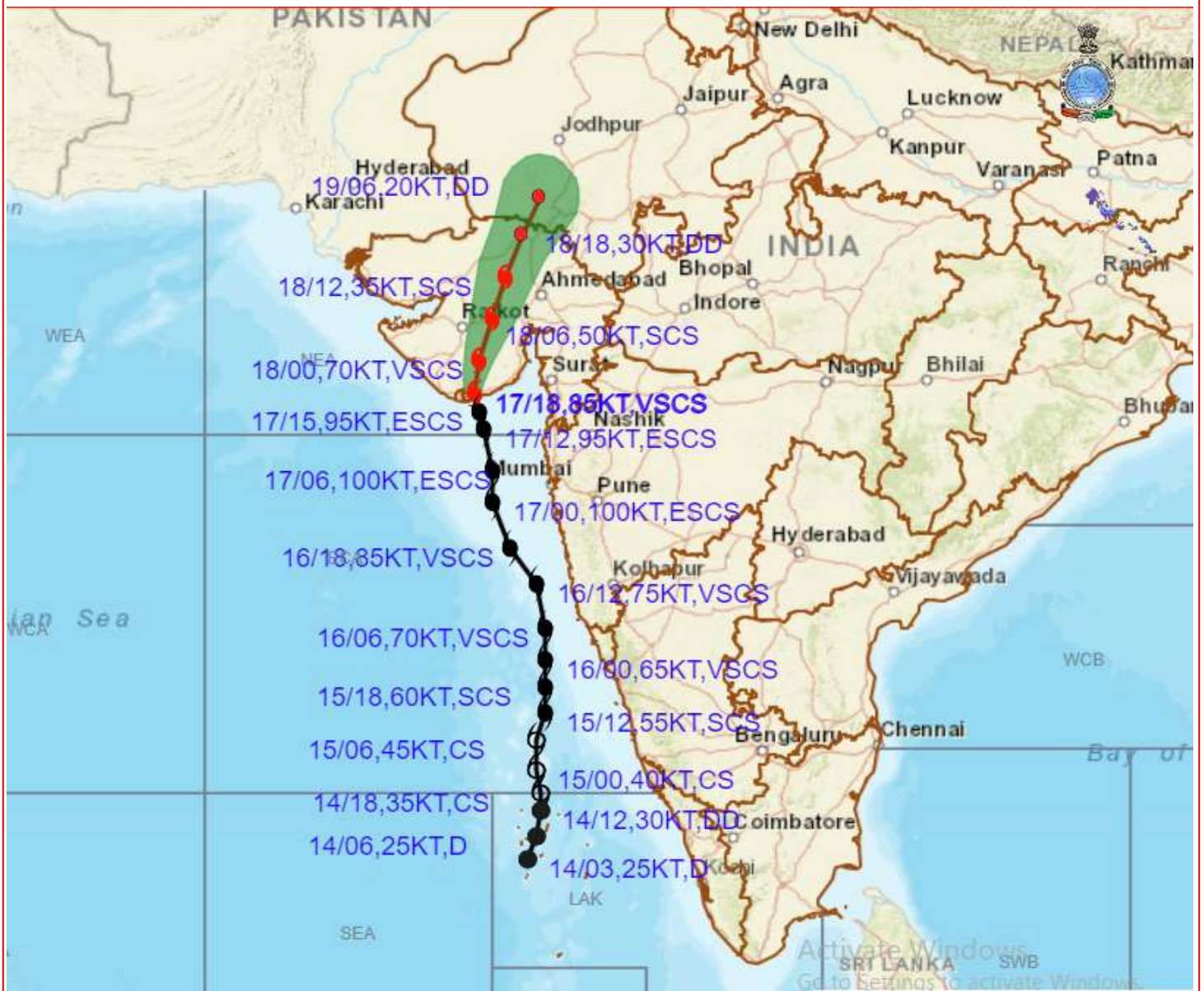


PROBABILITY OF CYCLOGENESIS (FORMATION OF DEPRESSION)

NIL: 0%, LOW: 1-25%, FAIR: 26-50%, MODERATE: 51-75% AND HIGH: 76-100%



OBSERVED AND FORECAST TRACK ALONGWITH CONE OF UNCERTAINTY OF VERY SEVERE CYCLONIC STORM "TAUKTAE" OVER SAURASHTRA BASED ON 1800 UTC OF 17TH MAY, 2021

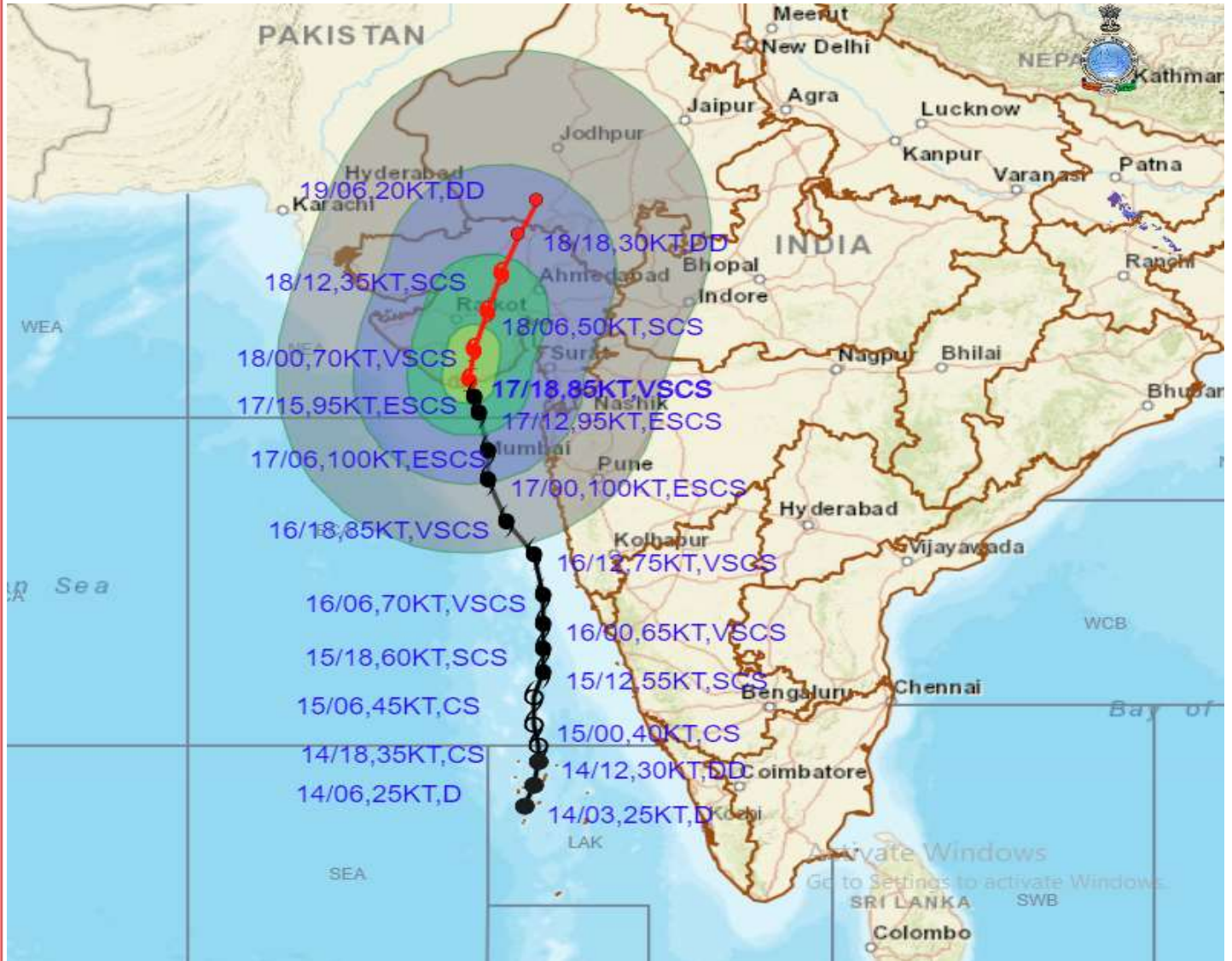


DATE/TIME IN UTC
 IST=UTC + 0530
L: LOW PRESSURE AREA
WML: WELL MARKED LOW PRESSURE AREA
D: DEPRESSION (17-27 KT)
DD: DEEP DEPRESSION (28-33 KT)
CS: CYCLONIC STORM (34-47 KT)
SCS: SEVERE CYCLONIC STORM (48-63KT)
VSCS: VERY SEVERE CYCLONIC STORM (64-89 KT)
ESCS: EXTREMELY SEVERE CYCLONIC STORM (90-119 KT)

- LESS THAN 34 KT
- 34-47 KT
- ≥ 48 KT
- OBSERVED TRACK
- FORECAST TRACK
- CONE OF UNCERTAINTY



OBSERVED AND FORECAST TRACK ALONGWITH CONE OF UNCERTAINTY OF VERY SEVERE CYCLONIC STORM "TAUKTAE" OVER SAURASHTRA BASED ON 1800 UTC OF 17TH MAY, 2021



DATE/TIME IN UTC

IST=UTC + 0530

L: LOW PRESSURE AREA

WML: WELL MARKED LOW PRESSURE AREA

D: DEPRESSION (17-27 KT)

DD: DEEP DEPRESSION (28-33 KT)

CS: CYCLONIC STORM (34-47 KT)

SCS: SEVERE CYCLONIC STORM (48-63KT)

VSCS: VERY SEVERE CYCLONIC STORM (64-89 KT)

ESCS: EXTREMELY SEVERE CYCLONIC STORM (90-119 KT)

SuCS: SUPER CYCLONIC STORM (≥ 120 KT)

● LESS THAN 34 KT

○ 34-47 KT

● ≥ 48 KT

— OBSERVED TRACK

— FORECAST TRACK

▲ CONE OF UNCERTAINTY

AREA OF MAXIMUM SUSTAINED WIND SPEED:

■ 28-33 KT (52-61 KMPH)

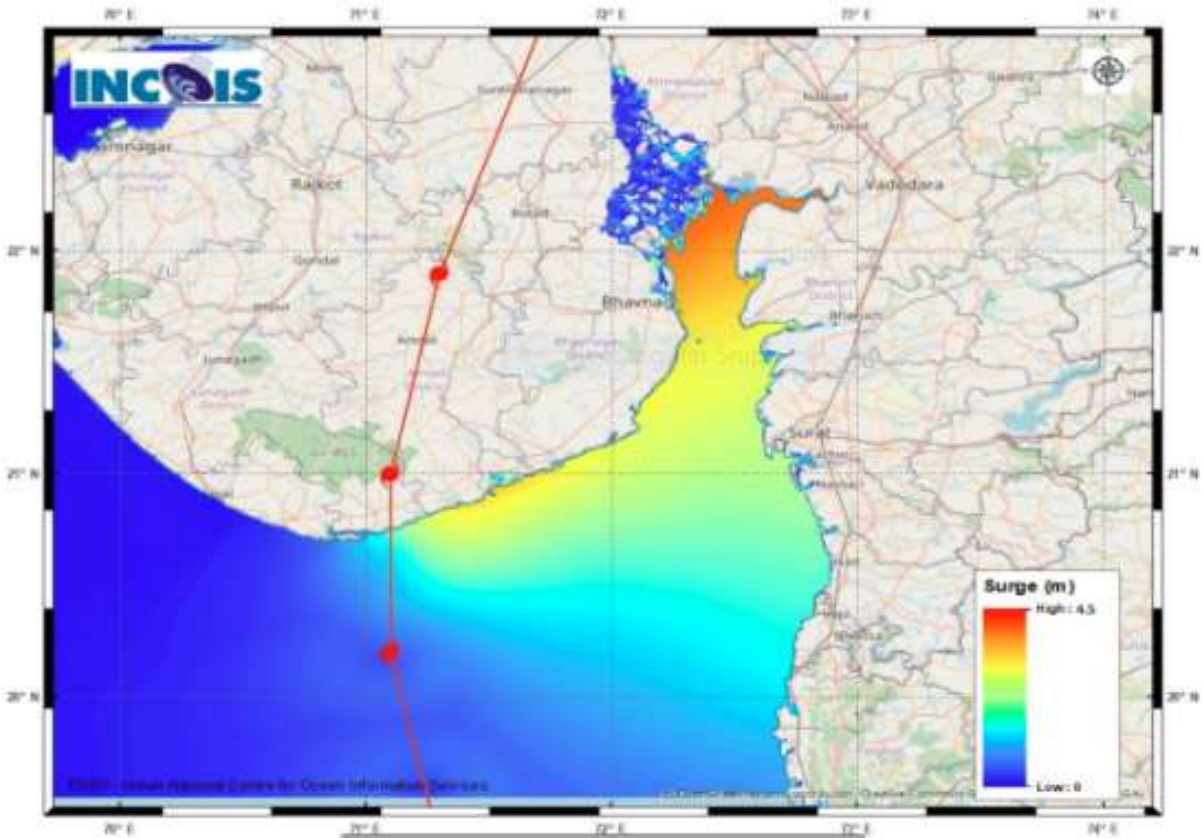
■ 34-49 KT (62-91 KMPH)

■ 50-63 KT (92-117 KMPH)

■ ≥ 64 KT (≥118 KMPH)

IMPACT OVER THE SEA

| MSW (knot/kmph) | Impact | Action |
|-----------------|------------------------|--|
| 28-33 (52-61) | Very rough seas | Total suspension of fishing operations |
| 34-49 (62-91) | High to very high seas | Total suspension of fishing operations |
| 50-63 (92-117) | Very high seas | Total suspension of fishing operations |
| ≥ 64 (≥118) | Phenomenal | Total suspension of fishing operations |



Page 2 Figure: S3rm Surge Map +

STOR

M SURGE GUIDANCE FROM INCOIS BASED ON 0530 HRS IST OBSERVATIONS

PROBABILITY OF CYCLOGENESIS (FORMATION OF DEPRESSION)
NIL: 0%, LOW: 1-25%, FAIR: 26-50%, MODERATE: 51-75% AND HIGH: 76-100%