



**REGIONAL SPECIALISED METEOROLOGICAL CENTRE-TROPICAL CYCLONES, NEW DELHI  
TROPICAL WEATHER OUTLOOK**

**DEMS-RSMC TROPICAL CYCLONES NEW DELHI DATED 22.07.2023**

**TROPICAL WEATHER OUTLOOK FOR NORTH INDIAN OCEAN (THE BAY OF BENGAL AND THE ARABIAN SEA) VALID FOR NEXT 168 HOURS ISSUED AT 0600 UTC OF 22.07.2023 BASED ON 0300 UTC OF 22.07.2023.**

**BAY OF BENGAL:**

YESTERDAY'S LOW PRESSURE AREA OVER COASTAL AREAS OF SOUTH ODISHA-NORTH ANDHRA PRADESH AND ADJOINING NORTHWEST & WESTCENTRAL BAY OF BENGAL HAS BECOME LESS MARKED. HOWEVER, THE ASSOCIATED CYCLONIC CIRCULATION NOW LIES OVER SOUTHEAST VIDARBHA & ADJOINING SOUTH CHHATTISGARH AND EXTENDS UPTO 4.5 KM ABOVE MEAN SEA LEVEL.

A CYCLONIC CIRCULATION LIES OVER WESTCENTRAL ADJOINING NORTHWEST BAY OF BENGAL EXTENDING UPTO 7.6 KM ABOVE MEAN SEA LEVEL.

A FRESH LOW PRESSURE AREA IS LIKELY TO FORM OVER NORTHWEST & ADJOINING WESTCENTRAL BAY OF BENGAL OFF SOUTH ODISHA-NORTH ANDHRA PRADESH COASTS AROUND 24<sup>TH</sup> JULY.

SCATTERED TO BROKEN LOW AND MEDIUM CLOUDS WITH EMBEDDED INTENSE TO VERY INTENSE CONVECTION LAY OVER CENTRAL BAY OF BENGAL, NORTHEAST BAY OF BENGAL AND ANDAMAN SEA. SCATTERED TO BROKEN LOW AND MEDIUM CLOUDS WITH EMBEDDED MODERATE TO INTENSE CONVECTION LAY OVER REST BAY OF BENGAL.

**PROBABILITY OF CYCLOGENESIS (FORMATION OF DEPRESSION) DURING NEXT 168 HRS:**

| 24 HOURS | 24-48 HOURS | 48-72 HOURS | 72-96 HOURS | 96-120 HOURS | 120-144 HOURS | 144-168 HOURS |
|----------|-------------|-------------|-------------|--------------|---------------|---------------|
| NIL      | NIL         | NIL         | LOW         | MODERATE     | LOW           | NIL           |

**ARABIAN SEA:**

BROKEN LOW AND MEDIUM CLOUDS WITH EMBEDDED INTENSE TO VERY INTENSE CONVECTION LAY OVER NORTHEAST ARABIAN SEA. SCATTERED LOW AND MEDIUM CLOUDS WITH EMBEDDED MODERATE TO INTENSE CONVECTION LAY OVER EASTCENTRAL ARABIAN SEA, SOUTHEAST ARABIAN SEA AND GULF OF KUTCH, AND WEAK TO MODERATE CONVECTION LAY OVER REST ARABIAN SEA AND COMORIN AREA.

**PROBABILITY OF CYCLOGENESIS (FORMATION OF DEPRESSION) DURING NEXT 168 HRS:**

| 24 HOURS | 24-48 HOURS | 48-72 HOURS | 72-96 HOURS | 96-120 HOURS | 120-144 HOURS | 144-168 HOURS |
|----------|-------------|-------------|-------------|--------------|---------------|---------------|
| NIL      | NIL         | NIL         | NIL         | NIL          | NIL           | NIL           |

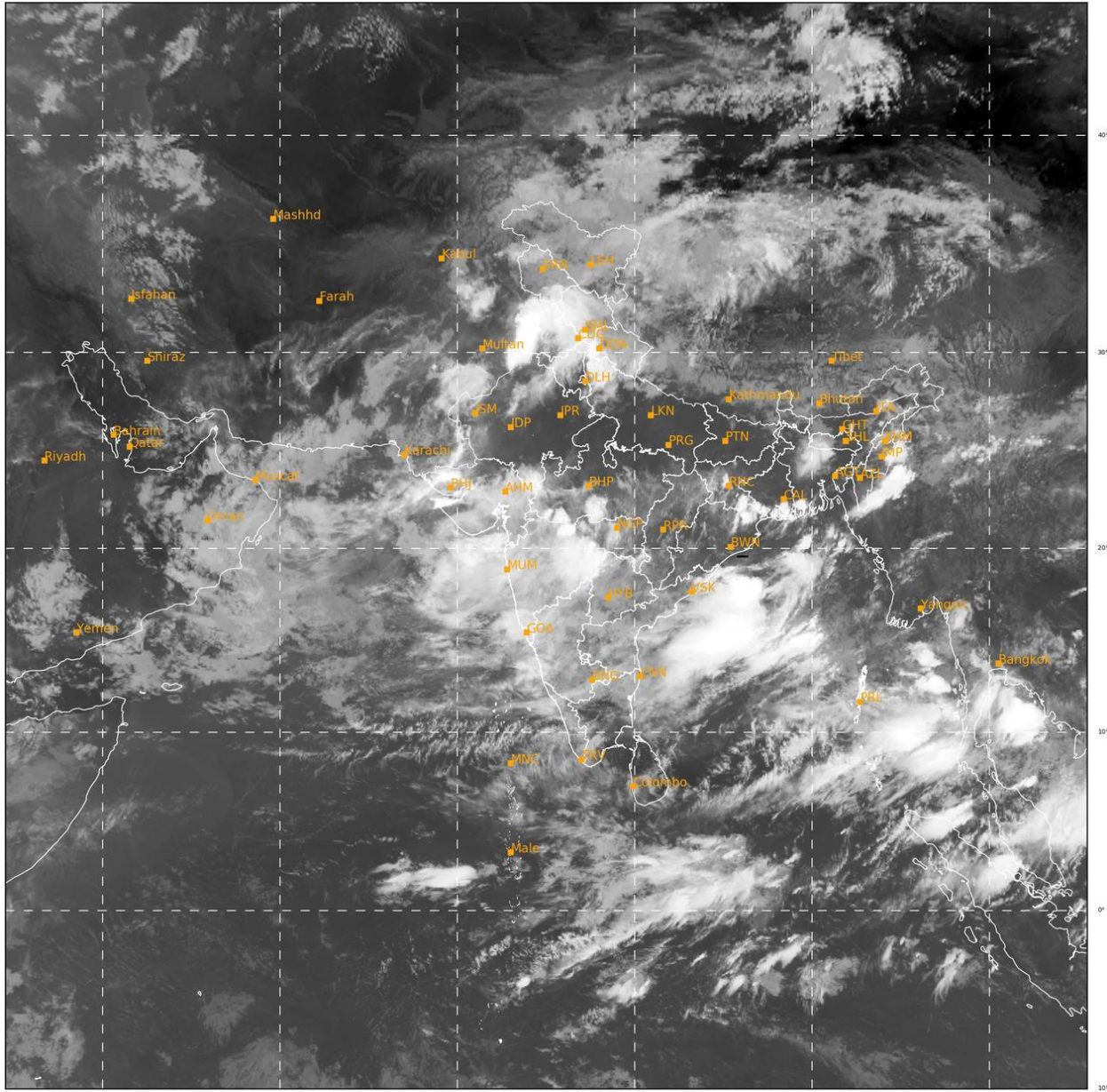
**REMARKS:**

**MODEL GUIDANCE FOR BAY OF BENGAL (BOB):**

VARIOUS DETERMINISTIC MODELS INCLUDING ECMWF, IMD GFS, NCUM, NEPS AND GEFS ARE INDICATING A FRESH LOW PRESSURE AREA (LPA) IS LIKELY TO FORM OVER COASTAL AREAS OF SOUTH ODISHA & NORTH ANDHRA PRADESH AND ADJOINING NORTHWEST & WESTCENTRAL BOB AROUND 24<sup>TH</sup> JULY. IN THE FORECASTS OF IMDGFS AND NCEP GFS MODELS, THE SYSTEM WILL BECOME MORE MARKED OVER THE SAME REGION AND MOVE SLOWLY NORTHWARDS OVER NORTHWEST BOB DURING NEXT TWO DAYS. ECMWF AND NCUM MODELS ARE ALSO SUPPORTING THE FURTHER INTENSIFICATION OVER THE REGION BUT WITHOUT ANY SIGNIFICANT MOVEMENT. THEREFORE, MODELS ARE IN CONSENSUS ABOUT THE FORMATION OF A FRESH LOW PRESSURE AREA SYSTEM OVER NORTHWEST AND ADJOINING WESTCENTRAL BOB OFF SOUTH ODISHA-NORTH ANDHRA PRADESH COASTS AROUND 24<sup>TH</sup> JULY. NEPS AND GEFS MODELS ARE SHOWING MODERATE PROBABILITY THAT THE LPA IS LIKELY TO INTENSIFY FURTHER INTO A DEPRESSION DURING SUBSEQUENT 2 DAYS AFTER ITS FORMATION.

IN VIEW OF THE AVAILABLE MODEL GUIDANCE AND ENVIRONMENTAL FEATURES, IT IS INFERRED THAT A FRESH LPA IS LIKELY TO FORM OVER NORTHWEST AND ADJOINING WESTCENTRAL BOB OFF SOUTH ODISHA - NORTH ANDHRA PRADESH COASTS AROUND 24<sup>TH</sup> JULY. THE SYSTEM HAS MODERATE PROBABILITY FOR ITS FURTHER INTENSIFICATION INTO A DEPRESSION DURING SUBSEQUENT 2 DAYS.

Legends: IMD GFS: India Meteorological Department Global Forecast System, NCUM: National Centre for Medium Range Weather Forecasting Centre (NCMRWF) Unified Model, European Centre for Medium Range Weather Forecasting, GPP: Genesis Potential Parameter, National Centre for Environment Prediction GFS, ECMM: ECMWF multi model, GEFS: GFS ensemble, NEPS: NCUM ensemble prediction system, CNCUM: Coupled NCUM, CPC: Climate Prediction Center, NWS: National Weather Service)



351

937

IMD, DELHI

Cloud distribution: (a) Isolated: <25%, Scattered:25-50%, Broken: 51-75%, Solid:>75%, Convection Intensity: (a) Weak: Cloud Top Temperature (CTT) >-25°C, (b) Moderate: CTT: - 25°C to -40°C, (c) Intense: CTT: - 41°C to -70°C and (d) Very Intense: : Less than -70°C  
PROBABILITY OF CYCLOGENESIS (FORMATION OF DEPRESSION):NIL: 0%, LOW: 1-33%, , MODERATE: 34-66% AND HIGH: 67-100%  
This is a guidance Bulletin for WMO/ESCAP Panel Member countries. Visit respective National websites for Country specific Bulletins