



**REGIONAL SPECIALISED METEOROLOGICAL CENTRE -TROPICAL CYCLONES, NEW DELHI  
TROPICAL WEATHER OUTLOOK**

**DEMS-RSMC TROPICAL CYCLONES NEW DELHI DATED 21.06.2026**

**TROPICAL WEATHER OUTLOOK FOR THE NORTH INDIAN OCEAN (THE BAY OF BENGAL AND THE ARABIAN SEA) VALID FOR THE NEXT 168 HOURS ISSUED AT 0600 UTC OF 21.06.2026 BASED ON 0300 UTC OF 21.06.2026.**

**BAY OF BENGAL:**

Scattered to broken low and medium clouds with embedded intense to very intense convection lay over north and central Bay of Bengal, Andaman Sea, Arakan Coast, and Gulf of Martaban. Scattered low and medium clouds with embedded moderate to intense convection lay over south Bay of Bengal.

**\*PROBABILITY OF CYCLOGENESIS (FORMATION OF DEPRESSION) DURING NEXT 168 HRS)**

24 HOURS	24-48 HOURS	48-72 HOURS	72-96 HOURS	96-120 HOURS	120-144 HOURS	144-168 HOURS
NIL	NIL	NIL	NIL	NIL	NIL	NIL

**\*NOTE: EVERY 24HR FORECAST IS VALID UPTO 0300 UTC (0830 IST) OF NEXT DAY**

**ARABIAN SEA:**

Yesterday's upper air cyclonic circulation over north Lakshadweep & neighborhood at 3.1 km above mean sea level has become less marked at 0300 UTC of today, 21<sup>st</sup> June, 2026.

Scattered to broken low and medium clouds with embedded intense to very intense convection lay over southeast Arabian Sea, Lakshadweep Islands area, and Maldives area. Scattered low and medium clouds with embedded moderate to intense convection lay over eastcentral and southwest Arabian Sea.

**\*PROBABILITY OF CYCLOGENESIS (FORMATION OF DEPRESSION) DURING NEXT 168 HRS:**

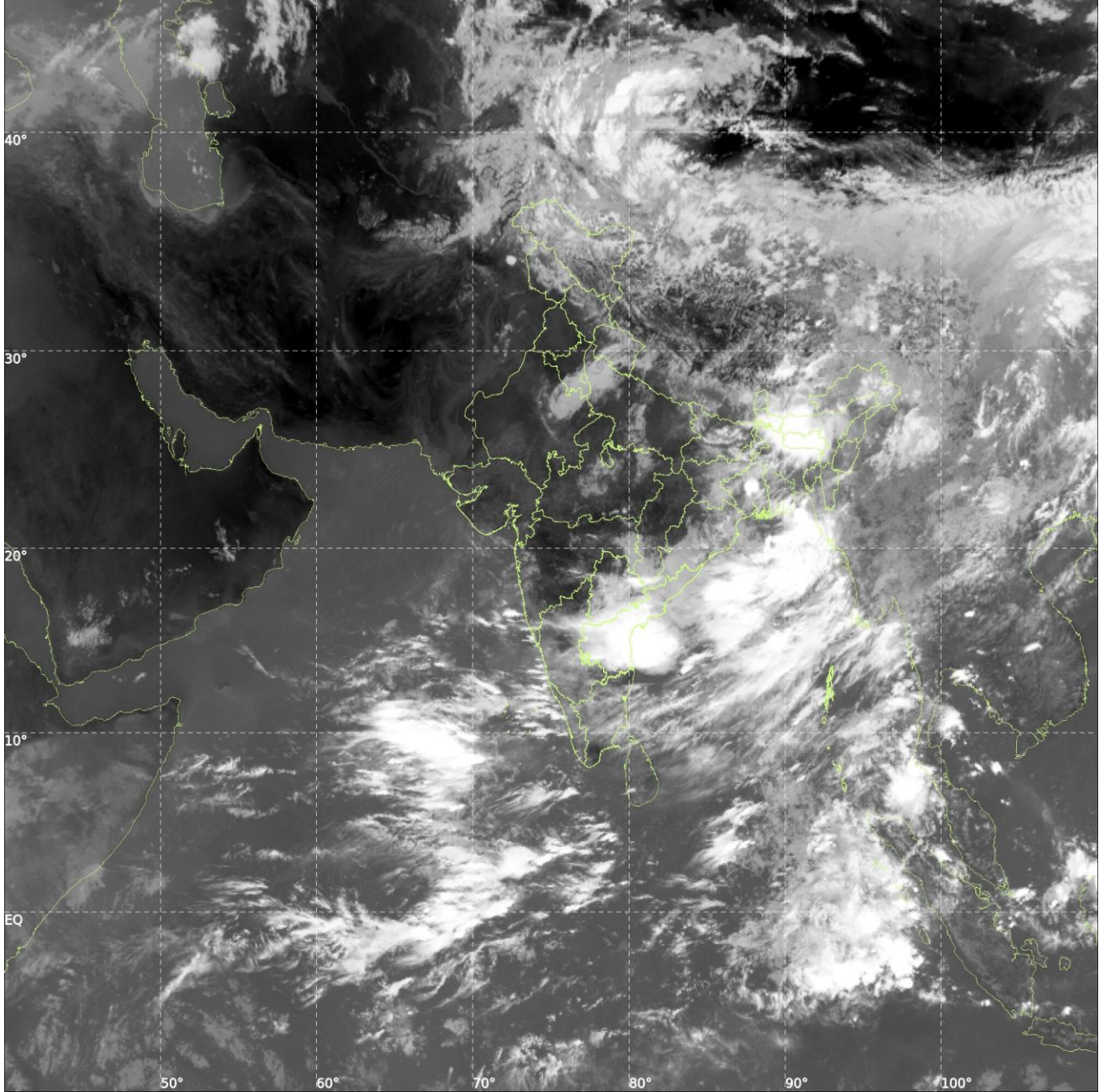
24 HOURS	24-48 HOURS	48-72 HOURS	72-96 HOURS	96-120 HOURS	120-144 HOURS	144-168 HOURS
NIL	NIL	NIL	NIL	NIL	NIL	NIL

**\*NOTE: EVERY 24HR FORECAST IS VALID UPTO 0300 UTC (0830 IST) OF NEXT DAY**

**REMARKS:** NIL



**INSAT-3DS IMG, Thermal Infrared1 Count @ 10.83  $\mu$ m**  
**GMT:21-06-2026/(0500-0527) IST:21-06-2026/(1030-1057)**  
**L1C MERCATOR (LINEAR STRETCH: 1%)**



Cloud distribution: (a) Isolated: <25%, Scattered:25-50%, Broken: 51-75%, Solid:>75%, Convection Intensity: (a) Weak: Cloud Top Temperature(CTT)>-25°C, (b) Moderate: CTT:-25°Cto-40°C, (c) Intense: CTT: -41°Cto -70°C and (d) Very Intense::Less than -70°C Probability of cyclogenesis (formation of depression) :NIL:0%, LOW:1-33%, MODERATE:34-66% and HIGH:67-100%  
This is a guidance Bulletin for WMO/ESCAP Panel Member countries. Visit respective National websites for Country specific Bulletins.