



**REGIONAL SPECIALISED METEOROLOGICAL CENTRE -TROPICAL CYCLONES, NEW DELHI
TROPICAL WEATHER OUTLOOK**

DEMS-RSMC TROPICAL CYCLONES NEW DELHI DATED 03.07.2026

TROPICAL WEATHER OUTLOOK FOR THE NORTH INDIAN OCEAN (THE BAY OF BENGAL AND THE ARABIAN SEA) VALID FOR THE NEXT 168 HOURS ISSUED AT 0600 UTC OF 03.07.2026 BASED ON 0300 UTC OF 03.07.2026.

BAY OF BENGAL:

Yesterday's Low Pressure Area over northwest Bay of Bengal and adjoining north Odisha-West Bengal coasts lay over Northwest Bay of Bengal & neighbourhood, at 0300 UTC of today, the 03rd July 2026. The associated cyclonic circulation extended upto 7.6 km above mean sea level tilting southwestwards with height. The system is likely to become more marked during next 2 days.

Scattered to broken low and medium clouds with embedded intense to very intense convection over Bay of Bengal, Andaman Sea, Arakan coast, Gulf of Martaban and Tenasserim coast.

***PROBABILITY OF CYCLOGENESIS (FORMATION OF DEPRESSION) DURING NEXT 168 HRS)**

24 HOURS	24-48 HOURS	48-72 HOURS	72-96 HOURS	96-120 HOURS	120-144 HOURS	144-168 HOURS
NIL	NIL	NIL	NIL	NIL	NIL	NIL

***NOTE: EVERY 24HR FORECAST IS VALID UPTO 0300 UTC (0830 IST) OF NEXT DAY**

ARABIAN SEA:

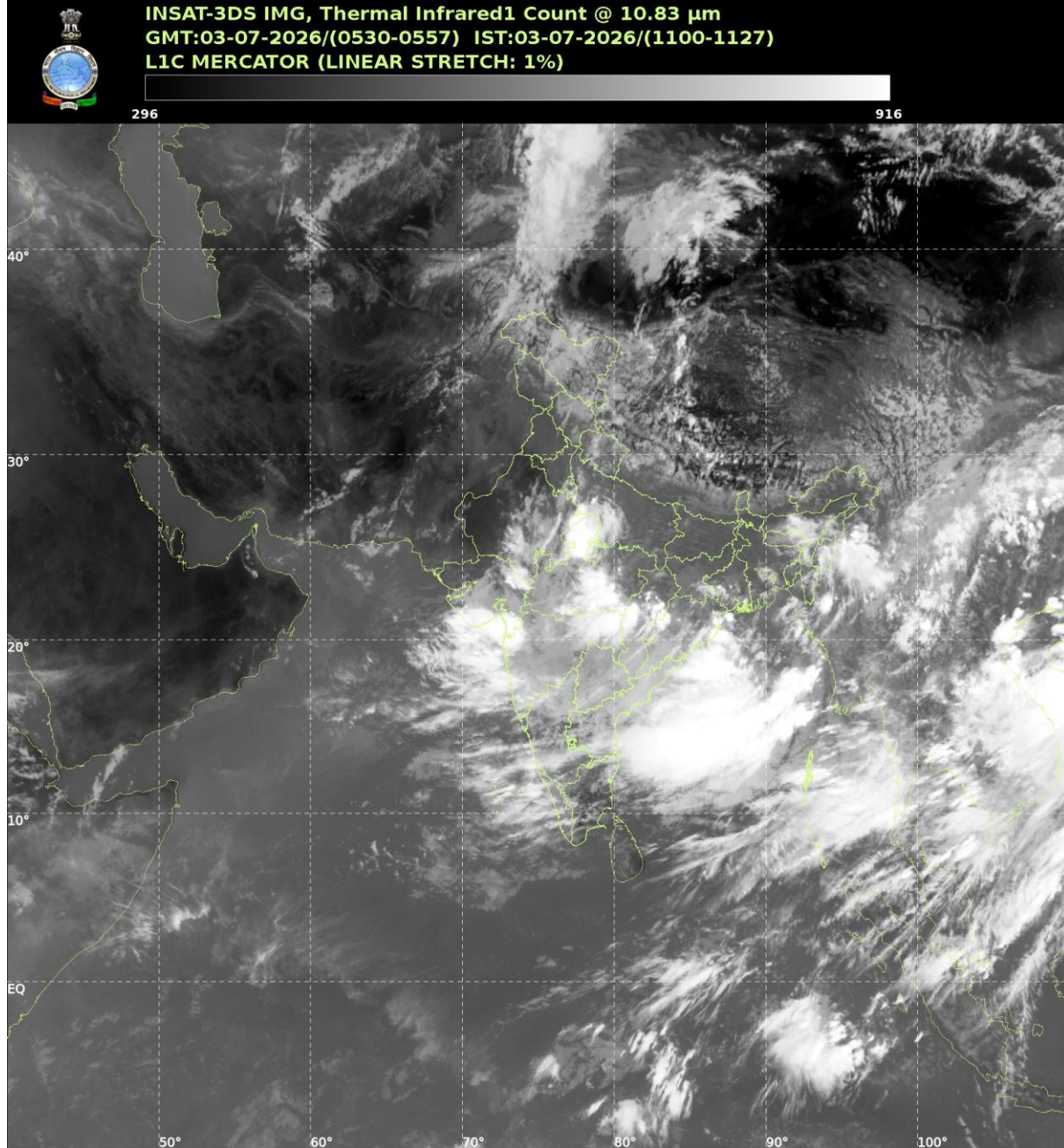
Scattered to broken low and medium clouds with embedded intense to very intense convection over northeast & eastcentral Arabian Sea off south Gujarat-Maharashtra coasts and Gulf of Cambay. Scattered low and medium clouds with embedded moderate to intense convection over rest eastcentral & southeast Arabian Sea, Lakshadweep Islands area and isolated weak to moderate convection over rest Arabian sea Gulf of Kutch Maldives & Comorin area.

***PROBABILITY OF CYCLOGENESIS (FORMATION OF DEPRESSION) DURING NEXT 168 HRS:**

24 HOURS	24-48 HOURS	48-72 HOURS	72-96 HOURS	96-120 HOURS	120-144 HOURS	144-168 HOURS
NIL	NIL	NIL	NIL	NIL	NIL	NIL

***NOTE: EVERY 24HR FORECAST IS VALID UPTO 0300 UTC (0830 IST) OF NEXT DAY**

REMARKS: NIL



Cloud distribution: (a) Isolated: <25%, Scattered:25-50%, Broken: 51-75%, Solid:>75%, Convection Intensity: (a) Weak: Cloud Top Temperature(CTT)>-25°C, (b) Moderate: CTT:-25°Cto-40°C, (c) Intense: CTT: -41°Cto -70°C and (d) Very Intense::Less than -70°C Probability of cyclogenesis (formation of depression) :NIL:0%, LOW:1-33%, MODERATE:34-66% and HIGH:67-100%
 This is a guidance Bulletin for WMO/ESCAP Panel Member countries. Visit respective National websites for Country specific Bulletins.