



**REGIONAL SPECIALISED METEOROLOGICAL CENTRE-TROPICAL CYCLONES, NEW DELHI
TROPICAL WEATHER OUTLOOK**

DEMS-RSMC TROPICAL CYCLONES NEW DELHI DATED 05.05.2023

TROPICAL WEATHER OUTLOOK FOR NORTH INDIAN OCEAN (THE BAY OF BENGAL AND THE ARABIAN SEA) VALID FOR NEXT 120 HOURS ISSUED AT 0700 UTC OF 05.05.2023 BASED ON 0300 UTC OF 05.05.2023.

BAY OF BENGAL:

A CYCLONIC CIRCULATION IS LIKELY TO DEVELOP OVER SOUTHEAST BAY OF BENGAL AROUND 6TH MAY, 2023. UNDER ITS INFLUENCE, A LOW PRESSURE AREA IS LIKELY TO FORM OVER THE SAME REGION AROUND 7TH MAY. IT IS LIKELY TO CONCENTRATE INTO A DEPRESSION OVER SOUTHEAST BOB AROUND 8TH MAY. THEREAFTER, IT IS LIKELY TO INTENSIFY INTO A CYCLONIC STORM WHILE MOVING NEARLY NORTHWARDS TOWARDS CENTRAL BOB. THE SYSTEM IS UNDER CONSTANT WATCH AND BEING MONITORED REGULARLY. THE DETAILS OF ITS PATH AND INTENSIFICATION WILL BE PROVIDED AFTER THE FORMATION OF LOW PRESSURE AREA.

SCATTERED LOW AND MEDIUM CLOUDS WITH EMBEDDED INTENSE TO VERY INTENSE CONVECTION LAY OVER SOUTH & WEST CENTRAL BAY OF BENGAL AND MODERATE TO INTENSE CONVECTION OVER SOUTH ANDAMAN SEA. SCATTERED LOW AND MEDIUM CLOUDS WITH EMBEDDED WEAK TO MODERATE CONVECTION LAY OVER NORTH BAY OF BENGAL.

PROBABILITY OF CYCLOGENESIS (FORMATION OF DEPRESSION) DURING NEXT 120 HRS:

24 HOURS	24-48 HOURS	48-72 HOURS	72-96 HOURS	96-120 HOURS
NIL	NIL	LOW	HIGH	HIGH

ARABIAN SEA:

SCATTERED LOW AND MEDIUM CLOUDS WITH EMBEDDED INTENSE TO VERY INTENSE CONVECTION LAY OVER COMORIN AREA. SCATTERED LOW AND MEDIUM CLOUDS WITH EMBEDDED ISOLATED WEAK TO MODERATE CONVECTION LAY OVER EASTCENTRAL ARABIAN SEA AND SOUTH ARABIAN SEA.

PROBABILITY OF CYCLOGENESIS (FORMATION OF DEPRESSION) DURING NEXT 120 HRS:

24 HOURS	24-48 HOURS	48-72 HOURS	72-96 HOURS	96-120 HOURS
NIL	NIL	NIL	NIL	NIL

REMARKS:

THE MADDEN JULIAN INDEX (MJO) CURRENTLY LIES IN PHASE 5 WITH AMPLITUDE MORE THAN 1. IT WILL CONTINUE IN SAME PHASE DURING NEXT 5 DAYS WITH GRADUALLY DECREASING AMPLITUDE BECOMING CLOSE TO 1 AROUND 10TH MAY. THUS, MJO PHASE IS HIGHLY CONDUCTIVE FOR ENHANCED CONVECTION OVER THE BAY OF BENGAL (BOB) DURING NEXT 5-6 DAYS. CURRENTLY, EASTERLY WINDS (1-3 MPS) ARE LIKELY TO PREVAIL OVER SOUTH ANDAMAN SEA AND SOUTH BOB IN THE LOWER TROPOSPHERIC LEVELS. THEREAFTER, THE WESTERLY WINDS ARE LIKELY TO PREVAIL OVER THE SOUTH BOB AND SOUTH ANDAMAN SEA WITH EASTERLY WINDS OVER CENTRAL & NORTH BOB FROM 8TH MAY ONWARDS. THUS, THE EQUATORIAL WAVES AND MJO ARE LIKELY TO COLLECTIVELY CONTRIBUTE TOWARDS ENHANCEMENT OF CONVECTIVE ACTIVITY AND HENCE CYCLOGENESIS OVER SOUTH BOB AROUND 8TH MAY ONWARDS.

THE TROPICAL CYCLONE HEAT POTENTIAL (TCHP) IS MORE THAN 100 KJ/CM² OVER MAJOR PARTS OF SOUTH ANDAMAN SEA & ADJOINING SOUTHEAST BOB AND CENTRAL BOB. IT IS INDICATING DECREASING TENDENCY ABOUT 60-70 KJ/CM² ALONG THE EAST COAST OF INDIA & ALONG MYANMAR COAST. SEA SURFACE TEMPERATURE (SST) IS AROUND 30-32°C OVER ENTIRE BOB. THE SEA CONDITIONS OVER BOB ARE ALSO CONDUCTIVE FOR CYCLOGENESIS.

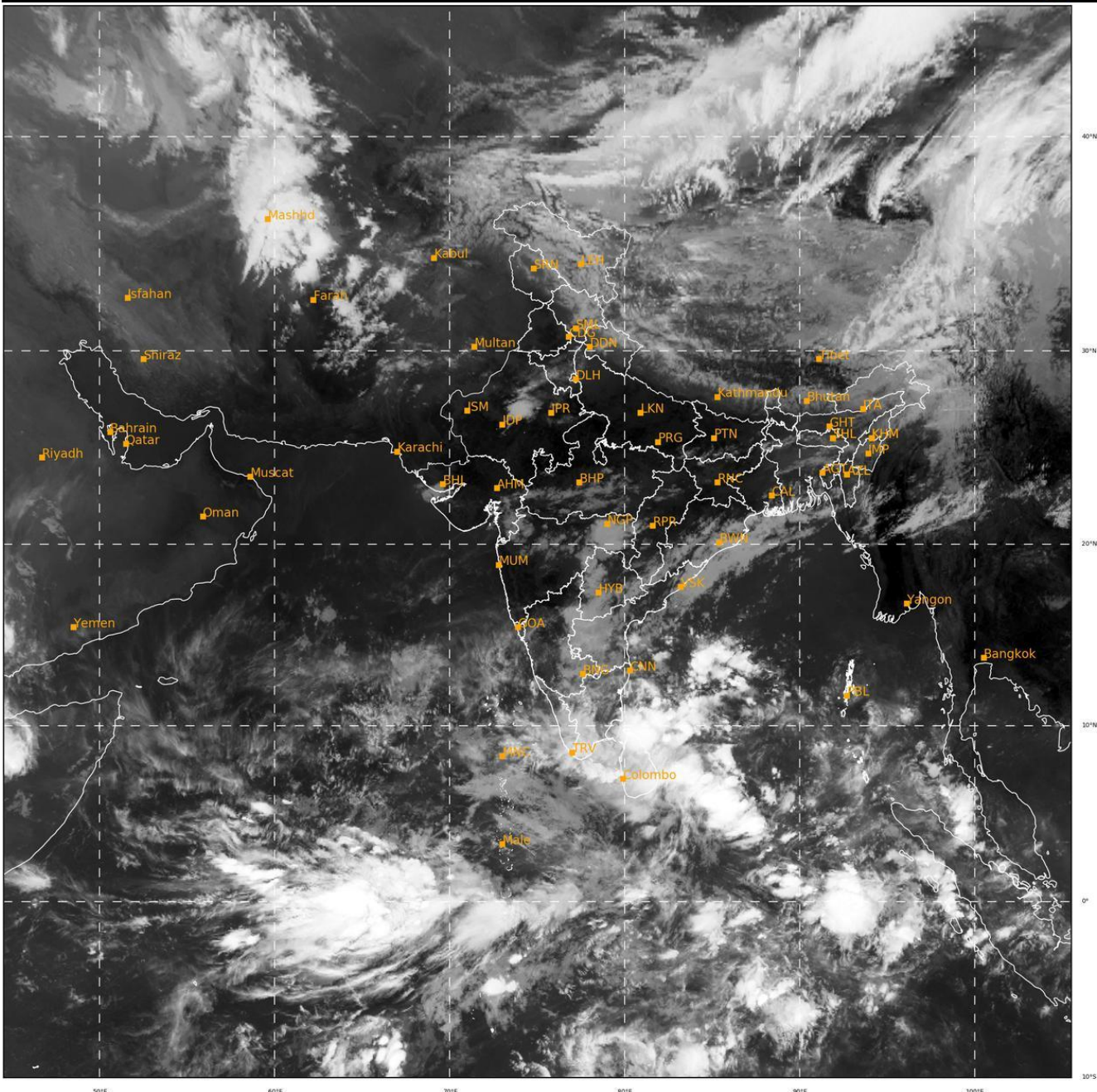
CONSIDERING THE MODEL GUIDANCE, IMD GFS IS INDICATING A LOW PRESSURE AREA (LPA) OVER SOUTHEAST BOB AROUND 7TH, DEPRESSION OVER SOUTH ANDAMAN SEA AROUND 8TH AND CYCLONIC STORM (CS) AROUND 9TH. IT IS INDICATING NEARLY NORTHEASTWARDS MOVEMENT TOWARDS BANGLADESH COAST AND CROSSING OVER BANGLADESH COAST NEAR 91.5E AROUND 13/000 UTC. INTENSIFICATION UPTO VERY SEVERE CYCLONIC STORM (VSCS) CATEGORY IS INDICATED. NCEP GFS IS INDICATING OVERALL MOVEMENT OVER ANDAMAN SEA AREA AND EASTCENTRAL BOB. IT IS INDICATING LPS AROUND 6TH OVER SOUTH ANDAMAN SEA, DEPRESSION AROUND 9TH OVER SOUTHEAST BOB, SCS AROUND 10TH OVER ANDAMAN ISLANDS, NEARLY NORTHWARDS MOVEMENT AND CROSSING OVER MYANMAR NEAR 20.7N/92.4E AROUND 13/0900 UTC. ECMWF IS INDICATING AN LPA OVER SOUTHEAST BOB AROUND 7TH, DEPRESSION OVER SOUTHEAST BOB AND ADJOINING ANDAMAN SEA AROUND 9TH, INTENSIFICATION INTO CYCLONIC STORM AROUND 11TH AND NORTH-NORTHEASTWARDS MOVEMENT TOWARDS GULF OF MARTABAN AND CROSSING OVER MYANMAR COAST NEAR 16.5/96.5 AROUND 12/1200 UTC. AS YESTERDAY, NCUM IS INDICATING WEST-NORTHWESTWARDS MOVEMENT TOWARDS TAMILNADU COAST AND EMERGENCE INTO SOUTHEAST EASTCENTRAL ARABIAN SEA AS A VSCS ON 13TH MAY. THERE IS LARGE DIVERGENCE AMONG VARIOUS MODELS WRT TRACK. HOWEVER, OVERALL, ECMWF & GFS GROUP OF MODELS ARE INDICATING NEARLY NORTHWARDS/NORTH-NORTHEASTWARDS MOVEMENT AND CROSSING OVER SOUTHEAST BANGLADESH-SOUTH MYANMAR COASTS. BUT NCUM BASED GUIDANCE IS ENTIRELY DIFFERENT TOWARDS TAMILNADU STATE OF INDIA.

HENCE TO CONCLUDE, A CYCLONIC CIRCULATION IS LIKELY TO DEVELOP OVER SOUTHEAST BAY OF BENGAL AROUND 6TH MAY, 2023. UNDER ITS INFLUENCE, A LOW PRESSURE AREA IS LIKELY TO FORM OVER THE SAME REGION AROUND 7TH MAY. IT IS LIKELY TO CONCENTRATE INTO A DEPRESSION OVER THE SAME REGION ON 8TH MAY. THEREAFTER, THERE IS A GOOD POSSIBILITY OF ITS INTENSIFICATION INTO A CYCLONIC STORM WHILE MOVING NEARLY NORTHWARDS TOWARDS

CENTRAL BOB. HIGH PROBABILITY HAS BEEN ASSIGNED TO GENESIS (FORMATION OF DEPRESSION) OVER SOUTHEAST BAY OF BENGAL ON DAY 4 & 5 DURING 8TH-10TH MAY, 2023. THE SYSTEM IS UNDER CONSTANT SURVEILLANCE AND BEING MONITORED CONTINUOUSLY. THE DETAILS OF ITS PATH AND INTENSIFICATION WILL BE PROVIDED AFTER THE FORMATION OF LOW PRESSURE AREA.

SAT : INSAT-3D IMG
 IMG_TIR1 10.8 um
 L1C Mercator

05-05-2023/(0300 to 0326) GMT
 05-05-2023/(0830 to 0856) IST



420

937

IMD, DELHI

Cloud distribution: (a) Isolated: <25%, Scattered:25-50%, Broken: 51-75%, Solid:>75%, Convection Intensity: (a) Weak: Cloud Top Temperature (CTT) >-25°C, (b) Moderate: CTT: - 25°C to -40°C, (c) Intense: CTT: - 41°C to -70°C and (d) Very Intense: : Less than -70°C
 PROBABILITY OF CYCLOGENESIS (FORMATION OF DEPRESSION): NIL: 0%, LOW: 1-33%, , MODERATE: 34-66% AND HIGH: 67-100%
 This is a guidance Bulletin for WMO/ESCAP Panel Member countries. Visit respective National websites for Country specific Bulletins