



**REGIONAL SPECIALISED METEOROLOGICAL CENTRE-TROPICAL CYCLONES, NEW DELHI
SPECIAL TROPICAL WEATHER OUTLOOK**

DEMS-RSMC SPECIAL TROPICAL CYCLONES NEW DELHI DATED 06.12.2023

SPECIAL TROPICAL WEATHER OUTLOOK FOR NORTH INDIAN OCEAN (THE BAY OF BENGAL AND ARABIAN SEA) VALID FOR NEXT 120 HOURS ISSUED AT 0600 UTC OF 06.12.2023 BASED ON 0300 UTC OF 06.12.2023

BAY OF BENGAL:

SUB: DEPRESSION (REMNANT OF CYCLONIC STORM "MICHAUNG", PRONOUNCED AS MIGJAUM) WEAKENED INTO A WELL MARKED LOW PRESSURE AREA OVER NORTHEAST TELANGANA

THE DEPRESSION (REMNANT OF CYCLONIC STORM "MICHAUNG", PRONOUNCED AS MIGJAUM) OVER NORTHEAST TELANGANA AND ADJOINING SOUTH CHHATTISGARH-SOUTH INTERIOR ODISHA-COASTAL ANDHRA PRADESH MOVED SLOWLY NORTH-NORTHEASTWARDS DURING PAST 06 HOURS AND WEAKENED INTO A WELL MARKED LOW PRESSURE AREA OVER THE SAME REGION AT 0300UTC OF TODAY, THE 06TH DECEMBER, 2023.

THE SYSTEM IS LIKELY TO CONTINUE TO MOVE NEARLY NORTH-NORTHEASTWARDS AND WEAKEN FURTHER INTO A LOW PRESSURE AREA DURING NEXT 12 HOURS.

INSAT-3D IMAGERY AT 0300 UTC OF 06TH DECEMBER, INDICATES SCATTERED TO BROKEN LOW/MEDIUM CLOUDS WITH EMBEDDED INTENSE TO VERY INTENSE CONVECTION LAY OVER NORTH COASTAL ANDHRA PRADESH (MINIMUM CLOUD TOP TEMPERATURE IS MINUS 80 DEGREE CELSIUS), AND MODERATE TO INTENSE CONVECTION LAY OVER EAST VIDARBHA, EAST MADHRA PRADESH, CHHATTISGARH, JHARKHAND AND ORISSA.

ARABIAN SEA:

SCATTERED LOW AND MEDIUM CLOUDS WITH EMBEDDED INTENSE TO VERY INTENSE CONVECTION LAY OVER SOUTHEAST ARABIAN SEA. SCATTERED LOW AND MEDIUM CLOUDS WITH EMBEDDED MODERATE TO INTENSE CONVECTION LAY OVER SOUTHWEST ARABIAN SEA, COMORIN AREA AND ISOLATED WEAK TO MODERATE CONVECTION LAY OVER EASTCENTRAL ARABIAN SEA, LAKSHADWEEP ISLANDS AREA.

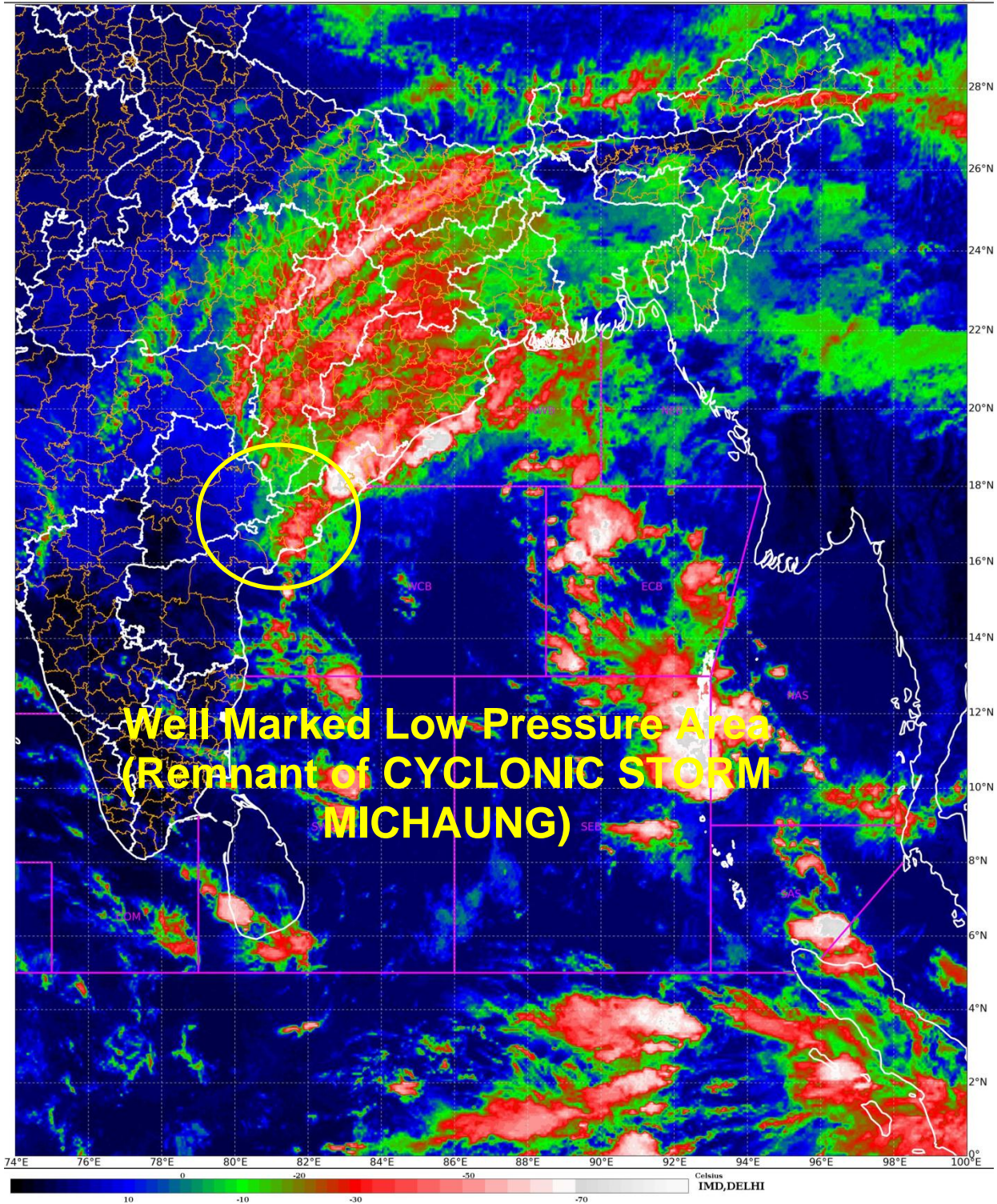
***PROBABILITY OF CYCLOGENESIS (FORMATION OF DEPRESSION) DURING NEXT 168 HRS:**

24 HOURS	24-48 HOURS	48-72 HOURS	72-96 HOURS	96-120 HOURS	120-144 HOURS	144-168 HOURS
NIL	NIL	NIL	NIL	NIL	NIL	NIL

***NOTE: EVERY 24HR FORECAST IS VALID UPTO 0300 UTC (0830 IST) OF NEXT DAY**

THIS IS THE LAST **SPECIAL TROPICAL WEATHER OUTLOOK** ISSUED FOR THE “**DEPRESSION (REMNANT OF CYCLONIC STORM “MICHAUNG”, PRONOUNCED AS MIGJAUM)**”. **HOWEVER, FOR REGULAR BULLETINS PLS REFER [HTTPS://RSMCNEWDELHI.IMD.GOV.IN/](https://RSMCNEWDELHI.IMD.GOV.IN/)**

(DR RK JENAMANI)
RSMC NEW DELHI



Cloud distribution: (a) Isolated: <25%, Scattered:25-50%, Broken: 51-75%, Solid:>75%, Convection Intensity: (a) Weak: Cloud Top Temperature (CTT) >-25°C, (b) Moderate: CTT: - 25°C to -40°C, (c) Intense: CTT: - 41°C to -70°C and (d) Very Intense: : Less than -70°C
PROBABILITY OF CYCLOGENESIS (FORMATION OF DEPRESSION):NIL: 0%, LOW: 1-33%, , MODERATE: 34-66% AND HIGH: 67-100%
This is a guidance Bulletin for WMO/ESCAP Panel Member countries. Visit respective National websites for Country specific Bulletins



OBSERVED TRACK IN ASSOCIATION WITH SEVERE CYCLONIC STORM "MICHAUNG" OVER BAY OF BENGAL DURING 1ST – 6TH DECEMBER, 2023



DATE/TIME IN UTC

IST=UTC + 0530

L: LOW PRESSURE AREA

WML: WELL MARKED LOW PRESSURE AREA

D: DEPRESSION (17-27 KT)

DD: DEEP DEPRESSION (28-33 KT)

CS: CYCLONIC STORM (34.7 KT)

SCS: SEVERE CYCLONIC STORM (48-63KT)

VSCS: VERY SEVERE CYCLONIC STORM (64-89 KT)

ESCS: EXTREMELY SEVERE CYCLONIC STORM (90-119 KT)

SuCS: SUPER CYCLONIC STORM (\geq 120 KT)

● LESS THAN 34 KT

⚡ 34.7 KT

⚡⊙ \geq 48 KT

— OBSERVED TRACK

— FORECAST TRACK

▲ CONE OF UNCERTAINTY

Cloud distribution: (a) Isolated: <25%, Scattered:25-50%, Broken: 51-75%, Solid:>75%, Convection Intensity: (a) Weak: Cloud Top Temperature (CTT) >-25°C, (b) Moderate: CTT: - 25°C to -40°C, (c) Intense: CTT: - 41°C to -70°C and (d) Very Intense: : Less than -70°C
 PROBABILITY OF CYCLOGENESIS (FORMATION OF DEPRESSION):NIL: 0%, LOW: 1-33%, , MODERATE: 34-66% AND HIGH: 67-100%
 This is a guidance Bulletin for WMO/ESCAP Panel Member countries. Visit respective National websites for Country specific Bulletins