



**India Meteorological Department
(Ministry of Earth Sciences)**

BULLETIN NO. : 02 (BOB/01/2021)

TIME OF ISSUE: 1130 HOURS IST

DATED: 02.04.2021

FROM: INDIA METEOROLOGICAL DEPARTMENT (FAX NO. 24643965/24699216/24623220)

TO: CONTROL ROOM, NDM, MINISTRY OF HOME AFFAIRS (FAX.NO. 23093750)

CONTROL ROOM NDMA (FAX.NO. 26701729)

CABINET SECRETARIAT (FAX.NO.23012284, 23018638)

PS TO HON'BLE MINISTER FOR S & T AND EARTH SCIENCES (FAX NO.23316745)

SECRETARY, MOES, (FAX NO. 24629777)

H.Q. (INTEGRATED DEFENCE STAFF AND CDS) (FAX NO. 23005137/23005147)

DIRECTOR GENERAL, DOORDARSHAN (23385843)

DIRECTOR GENERAL, AIR (23421105, 23421219)

PIB MOES (FAX NO. 23389042)

UNI (FAX NO. 23355841)

D.G. NATIONAL DISASTER RESPONSE FORCE (NDRF) (FAX NO. 26105912, 2436 3260)

DIRECTOR, PUNCTUALITY, INDIAN RAILWAYS (FAX NO. 23388503)

CHIEF SECRETARY, ANDAMAN & NICOBAR ISLANDS (FAX NO. 03192- 232656)

CHIEF SECRETARY, ANDHRA PRADESH (FAX NO. 0863-2441029, 08645-246600)

CHIEF SECRETARY, TAMIL NADU (FAX NO. 044-25672304)

CHIEF SECRETARY, PUDUCHERRY (FAX NO. 0413-2337575, 2334145)

CHIEF SECRETARY, GOVT. OF ODISHA (FAX NO. 0674 -2536660)

CHIEF SECRETARY, GOVT. OF WEST BENGAL (FAX NO. 033-22144328)

Sub: Depression over north Andaman Sea & neighbourhood

The depression over north Andaman Sea & neighbourhood remained practically stationary and lay centred at 0830 hrs IST of today, the 02nd April, 2021 near latitude 11.0°N and longitude 96.3°E, about 400 km east-northeast of Port Blair (Andaman Islands), 420 km north-northwest of Phuket (Thailand) and 640 km south of Yangon (Myanmar). It is likely to move north-northeastwards towards Myanmar coast. It is likely to intensify into a deep depression during next 12 hours.

Forecast track and intensity are given in the following table:

Date/Time(IST)	Position (Lat. °N/ long. °E)	Maximum sustained surface wind speed (Kmph)	Category of cyclonic disturbance
02.04.21/0830	11.0/96.3	45-55 gusting to 65	Depression
02.04.21/1730	11.5/96.7	50-60 gusting to 70	Deep Depression
03.04.21/0530	12.2/97.2	50-60 gusting to 70	Deep Depression
03.04.21/1730	13.1/97.4	40-50 gusting to 60	Depression

Warnings:

(i) Rainfall

- Light to moderate rainfall at many places with heavy falls at isolated places (upto 6.5-12 cm) very likely over Andaman Islands and light to moderate rainfall at a few places over Nicobar Islands on 2nd April, 2021.

(ii) Wind warning

- Squally winds speed reaching 45-55 kmph gusting to 65 kmph very likely over Andaman Sea becoming 50-60 kmph gusting to 70 kmph from today evening till tomorrow morning. Squally winds speed reaching 45-55 kmph gusting to 65 kmph very likely over Andaman Sea during the subsequent 12 hours.
- Squally winds speed reaching 40-50 kmph gusting to 60 kmph are also very likely over and around Andaman & Nicobar Islands during next 24 hours.

(iii) Sea condition

Sea condition will be rough to very rough over Andaman Sea on 2nd & 3rd April, 2021.

(iv) Impact expected:

Rough to very rough Seas and squally weather with wind speed 45-55 kmph gusting to 65 kmph, affecting small vessels and fishing operations.

(v) Warnings / Advisory:

(a) Fishermen Warning

The fishermen are advised not to venture into Andaman Sea on 2nd & 3rd April, 2021.

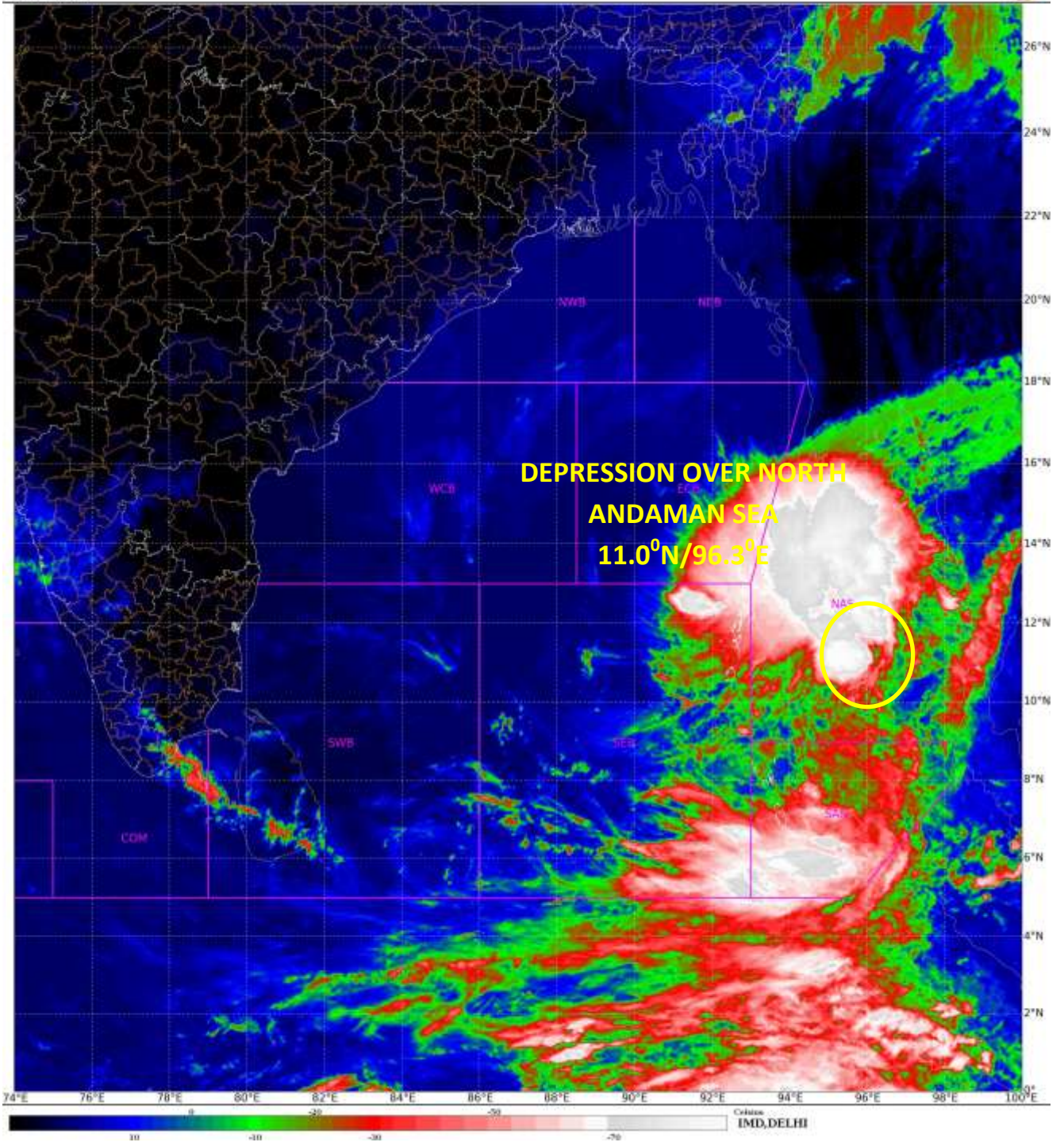
(b) Advisory for other maritime operations

- Small ships are advised to avoid the area
- Ports along the Andaman & Nicobar Islands may take necessary pre-cautions.
- Naval base operations may maintain necessary pre-cautions
- Tourism activities may be restricted briefly over and around Andaman & Nicobar Islands.

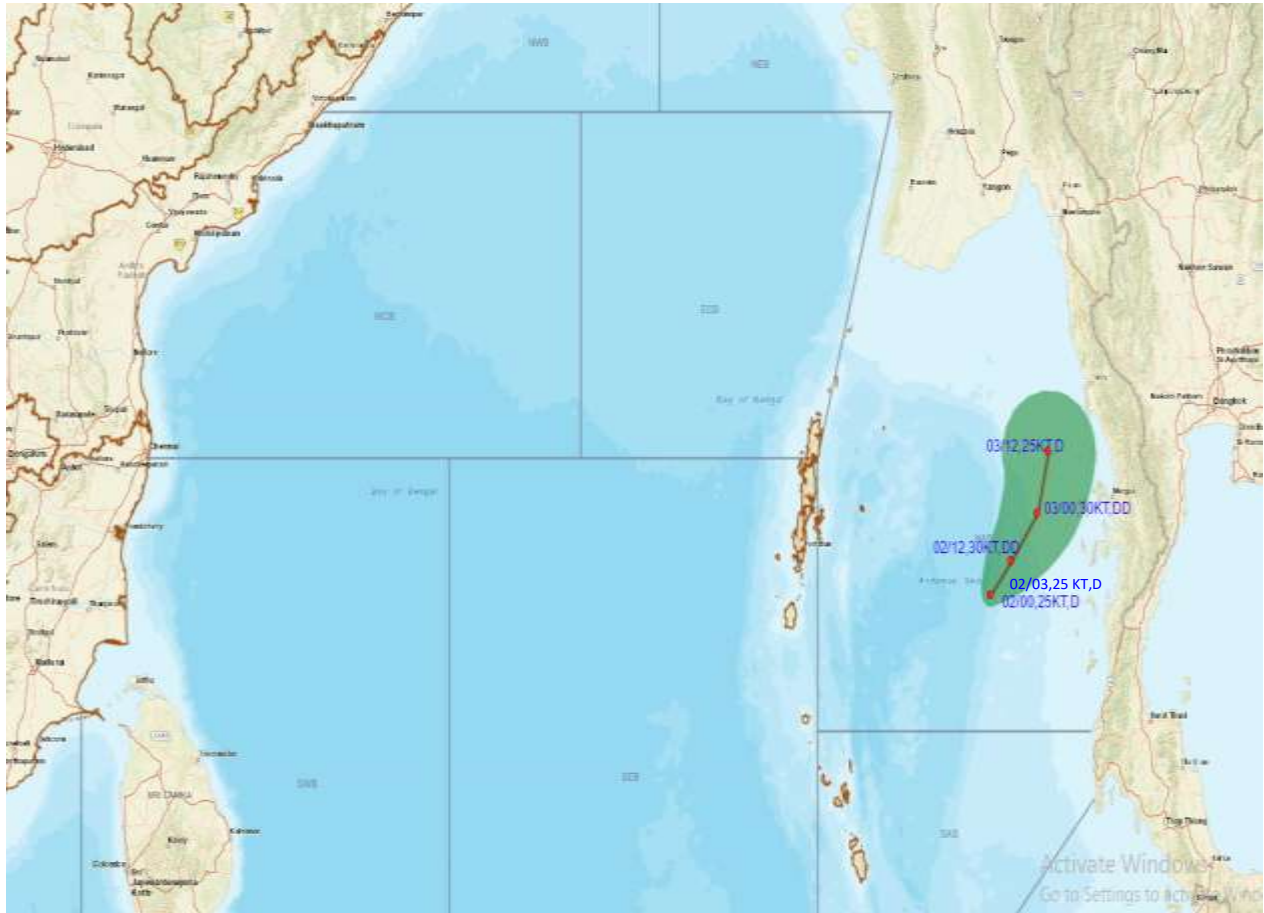
The next bulletin will be issued at 1430 hrs IST of 02nd April, 2021.

**(Sunitha Devi.)
Scientist-F, RSMC, New Delhi**

Copy to: CRS, Pune/ ACWC Kolkata/ Chennai/ CWC Bhubaneswar/CWC Visakhapatnam



OBSERVED TRACK ALONGWITH CONE OF UNCERTAINTY OF DEPRESSION OVER NORTH ANDAMAN SEA BASED ON 0300 UTC OF 2ND APRIL, 2021.



DATE/TIME IN UTC

IST=UTC + 0530

L: LOW PRESSURE AREA

WML: WELL MARKED LOW PRESSURE AREA

D: DEPRESSION (17-27 KT)

DD: DEEP DEPRESSION (28-33 KT)


CS: CYCLONIC STORM (34-47 KT)


SCS: SEVERE CYCLONIC STORM (48-63KT)


VSCS: VERY SEVERE CYCLONIC STORM (64-89 KT)

ESCS: EXTREMELY SEVERE CYCLONIC STORM (90-119 KT)

SuCS: SUPER CYCLONIC STORM (≥20 KT)


 **LESS THAN 34 KT**

 **34-47 KT**

 **≥ 48 KT**

 **OBSERVED TRACK**

 **FORECAST TRACK**

 **CONE OF UNCERTAINTY**



OBSERVED AND FORECAST TRACK ALONGWITH QUADRANT WIND DISTRIBUTION OF DEPRESSION OVER NORTH ANDAMAN SEA BASED ON 0300 UTC OF 2ND APRIL, 2021



DATE/TIME IN UTC

IST=UTC + 0530

L: LOW PRESSURE AREA

WML: WELL MARKED LOW PRESSURE AREA

D: DEPRESSION (17-27 KT)

DD: DEEP DEPRESSION (28-33 KT)

CS: CYCLONIC STORM (34-47 KT)

SCS: SEVERE CYCLONIC STORM (48-63KT)

VSCS: VERY SEVERE CYCLONIC STORM (64-89 KT)

ESCS: EXTREMELY SEVERE CYCLONIC STORM (90-119 KT)

SuCS: SUPER CYCLONIC STORM (≥ 120 KT)

- LESS THAN 34 KT
- 34-47 KT
- ≥ 48 KT
- OBSERVED TRACK
- FORECAST TRACK
- CONE OF UNCERTAINTY
- AREA OF MAXIMUM SUSTAINED WIND SPEED:
- 28-33 KT (52-61 KMPH)
- 34-49 KT (62-91 KMPH)
- 50-63 KT (92-117 KMPH)
- ≥ 64 KT (≥118 KMPH)

IMPACT OVER THE SEA

MSW (knot/kmph)	Impact	Action
28-33 (52-61)	Very rough seas	Total suspension of fishing operations
34-49 (62-91)	High to very high seas	Total suspension of fishing operations
50-63 (92-117)	Very high seas	Total suspension of fishing operations
≥ 64 (≥118)	Phenomenal	Total suspension of fishing operations