



REGIONAL SPECIALISED METEOROLOGICAL CENTRE -TROPICAL CYCLONES, NEW DELHI
TROPICAL WEATHER OUTLOOK

DEMS-RSMC TROPICAL CYCLONES NEW DELHI DATED 13.09.2025

TROPICAL WEATHER OUTLOOK FOR THE NORTH INDIAN OCEAN (THE BAY OF BENGAL AND THE ARABIAN SEA) VALID FOR THE NEXT 168 HOURS ISSUED AT 0600 UTC OF 13.09.2025 BASED ON 0300 UTC OF 13.09.2025.

BAY OF BENGAL:

Yesterday's low pressure area over northwest & adjoining westcentral Bay of Bengal off south Odisha-north Andhra Pradesh coasts lay over westcentral & adjoining northwest Bay of Bengal off north coastal Andhra Pradesh-south Odisha coasts at 0300 UTC of today, 13th September, 2025 and extended upto 5.8km above mean sea level, tilting southwestwards with height. It is likely to move west-northwestwards across south Odisha and adjoining north Andhra Pradesh and south Chhattisgarh during next 2 days.

Scattered low and medium clouds with embedded intense to very intense convection lay over westcentral & south Bay of Bengal and moderate to intense convection lay over rest of Bay of Bengal and Andaman Sea.

***PROBABILITY OF CYCLOGENESIS (FORMATION OF DEPRESSION) DURING NEXT 168 HRS**

24 HOURS	24-48 HOURS	48-72 HOURS	72-96 HOURS	96-120 HOURS	120-144 HOURS	144-168 HOURS
NIL	NIL	NIL	NIL	NIL	NIL	NIL

***NOTE: EVERY 24HR FORECAST IS VALID UPTO 0300 UTC (0830 IST) OF NEXT DAY**

ARABIAN SEA:

Scattered low and medium clouds with embedded moderate to intense convection lay over southeast Arabian Sea and Maldives area. Scattered low and medium clouds with embedded isolated weak to moderate convection lay over rest of Arabian Sea & Lakshadweep Island area.

***PROBABILITY OF CYCLOGENESIS (FORMATION OF DEPRESSION) DURING NEXT 168 HRS**

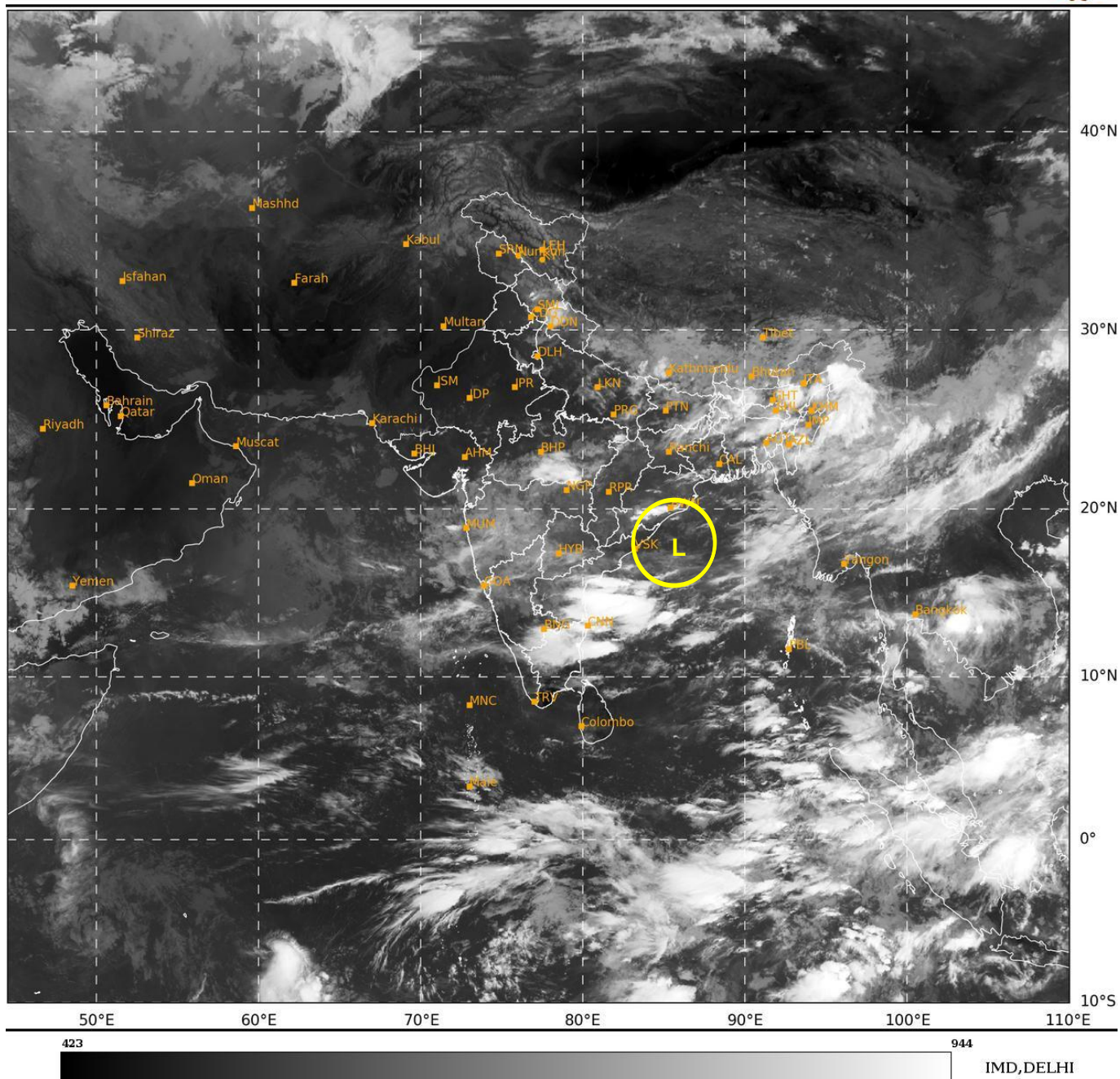
24 HOURS	24-48 HOURS	48-72 HOURS	72-96 HOURS	96-120 HOURS	120-144 HOURS	144-168 HOURS
NIL	NIL	NIL	NIL	NIL	NIL	NIL

***NOTE: EVERY 24HR FORECAST IS VALID UPTO 0300 UTC (0830 IST) OF NEXT DAY**

REMARKS: NIL

SAT : INSAT-3DR IMG
IMG_TIR1 10.8 um
L1C Mercator

13-09-2025/(0315 to 0341) GMT
13-09-2025/(0845 to 0911) IST



L: Low Pressure Area